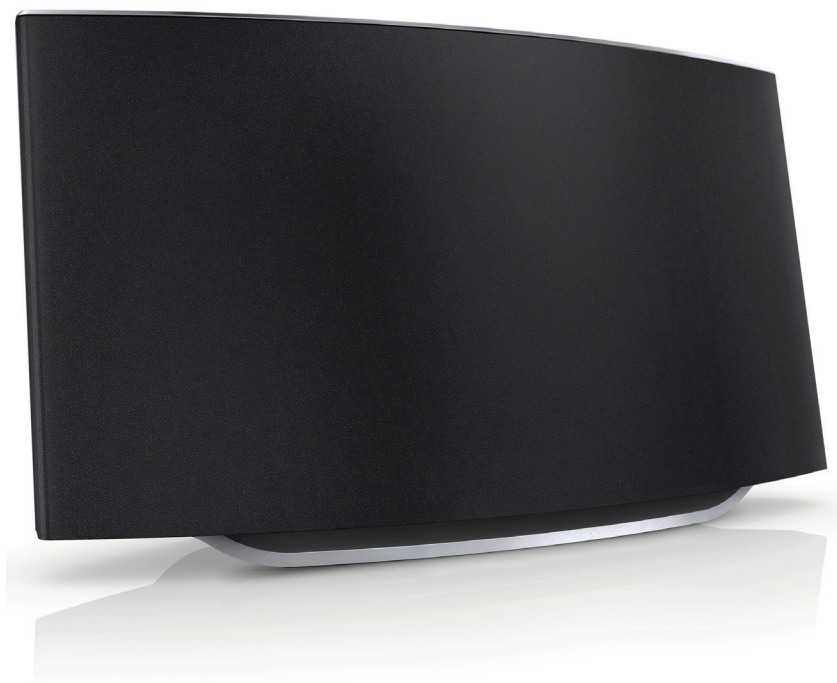


Always there to help you

Register your product and get support at
www.philips.com/welcome



AD7050W



User manual

PHILIPS

Contents

1	Important	2
	Safety	2
	Notice	3

2	Your Entertainment System	5
	Introduction	5
	What's in the box	5
	What else you need	5
	Overview of the main unit	6
	Get started to use AirPlay	6

3	Prepare	7
	Connect power	7
	Turn AD7050W on	7

4	Connect to your home Wi-Fi network for AirPlay	8
	Method 1: Use iOS5 Wi-Fi network login sharing	8
	Method 2: Connect to a WPS router	9
	Method 3: Connect to a non-WPS Wi-Fi router	10

5	Play	18
	Stream audio from your iTunes music library to AD7050W	18
	Use advanced sound settings	20
	Play/charge your iPod/iPhone/iPad through USB socket	20
	Play from an external device	21

6	Update firmware	22
	Download the update file	22
	Update from the configuration page	22

7	Product information	24
	Specifications	24

8	Troubleshooting	25
----------	------------------------	-----------

1 Important

Safety

Information for Europe:

Know these safety symbols



The 'exclamation mark' calls attention to features for which you should carefully read the supplied literature to prevent operating and maintenance problems.

The 'lightening bolt' symbol indicates uninsulated components within the product that can cause an electric shock.

To reduce the risk of fire or electric shock, do not expose the product to rain or moisture and do not place any objects filled with liquids, such as vases, on the product.

- ① Read these instructions.
- ② Keep these instructions.
- ③ Heed all warnings.
- ④ Follow all instructions.
- ⑤ Do not use this product near water.
- ⑥ Clean only with dry cloth.
- ⑦ Do not block any ventilation openings. Install in accordance with the manufacturer's instructions.

- ⑧ Do not remove the casing of this product.
- ⑨ Do not expose the product to dripping / splashing water, rain or high humidity.
- ⑩ Keep this product away from direct sunlight, naked flames or heat.
- ⑪ Do not install near any heat sources such as radiators, heat registers, stoves, or other electrical equipment (including amplifiers).
- ⑫ Do not place any other electrical equipment on the product.
- ⑬ Do not place any sources of danger on the product (e.g. objects containing liquids, burning candles).
- ⑭ Where the mains plug or an appliance coupler is used as the disconnect device, the disconnect device shall remain readily operable.



Warning

- Never remove the casing of this apparatus.
- Never lubricate any part of this apparatus.
- Never place this apparatus on other electrical equipment.
- Keep this apparatus away from direct sunlight, naked flames or heat.
- Ensure that you always have easy access to the power cord, plug or adaptor to disconnect this apparatus from the power.

Risk of overheating! Never install this apparatus in a confined space. Always leave a space of at least four inches around this apparatus for ventilation. Ensure curtains or other objects never cover the ventilation slots on this apparatus.

Notice

CE 0560

Hereby, WOOX Innovations declares that this product is in compliance with the essential requirements and other relevant provisions of Directive 1999/5/EC. You can find the Declaration of Conformity on www.philips.com/support.

Any changes or modifications made to this device that are not expressly approved by WOOX Innovations may void the user's authority to operate the equipment.

Philips and the Philips' Shield Emblem are registered trademarks of Koninklijke Philips N.V. and are used by WOOX Innovations Limited under license from Koninklijke Philips N.V."

Specifications are subject to change without notice. WOOX reserves the right to change products at any time without being obliged to adjust earlier supplies accordingly.



Your product is designed and manufactured with high quality materials and components, which can be recycled and reused.



When this crossed-out wheeled bin symbol is attached to a product it means that the product is covered by the European Directive 2002/96/EC.

Please inform yourself about the local separate collection system for electrical and electronic products.

Please act according to your local rules and do not dispose of your old products with

your normal household waste. Correct disposal of your old product helps to prevent potential negative consequences for the environment and human health.

Environmental information

All unnecessary packaging has been omitted. We have tried to make the packaging easy to separate into three materials: cardboard (box), polystyrene foam (buffer) and polyethylene (bags, protective foam sheet.)

Your system consists of materials which can be recycled and reused if disassembled by a specialized company. Please observe the local regulations regarding the disposal of packaging materials, exhausted batteries and old equipment.

Made for

 iPod  iPhone  iPad



"Made for iPod," "Made for iPhone," and "Made for iPad" mean that an electronic accessory has been designed to connect specifically to iPod, iPhone, or iPad, respectively, and has been certified by the developer to meet Apple performance standards. Apple is not responsible for the operation of this device or its compliance with safety and regulatory standards. Please note that the use of this accessory with iPod, iPhone, or iPad may affect wireless performance.

AirPlay, iPod, and iPhone are trademarks of Apple Inc., registered in the U.S. and other countries. iPad is a trademark of Apple Inc.

Class II equipment symbol:



CLASS II apparatus with double insulation,
and no protective earth provided.



Note

- The type plate is located on the bottom of the apparatus.

2 Your Entertainment System

Congratulations on your purchase, and welcome to Philips! To fully benefit from the support that Philips offers, register your product at www.philips.com/welcome.

If you contact Philips, you will be asked for the model and serial number of this apparatus. The model number and serial number are on the bottom of the apparatus. Write the numbers here:

Model No. _____

Serial No. _____

Introduction

Apple AirPlay technology enables you to play your iTunes music library, hosted on a Mac, PC, iPhone, iPod touch, or iPad on any AirPlay-enabled device (for example, your AD7050W) connected to the Wi-Fi network.

With an AirPlay-enabled device (for example, your AD7050W), you can:

- stream audio from your iTunes music library to any room in your house
- choose which AirPlay-enabled devices you want to play music on (if you have more than one such devices in your house)
- stream audio to multiple AirPlay-enabled devices at the same time (from the iTunes music library on your PC/Mac only)



Tip

- Please visit www.philips.com/welcome for information about more Philips AirPlay-enabled devices.

With AD7050W, you can also:

- charge your iPod/iPhone/iPad through the USB socket with an Apple USB cable (not supplied).
- play your iTunes music library on your iPod/iPhone/iPad through the USB socket directly while charging.
- play music from other audio devices through the **MP3-LINK** socket.

What's in the box

Check and identify the contents of your package:

- Main unit (with a built-in Wi-Fi module)
- 1 × AC power adapter
- 1 × MP3 link cable
- User manual (on CD-ROM)
- Quick start guide

What else you need

To stream audio wirelessly by AirPlay, you need:

- A Wi-Fi certified router
- A host for your iTunes music library, for example, an iPod touch/iPhone/iPad installed with iOS 4.3.3 (or later) or a Wi-Fi enabled PC/Mac installed with iTunes 10.2.2 (or later)

Your AD7050W should be connected to the same local network as your iTunes host device through the Wi-Fi router.

List of compatible iTunes host devices for AirPlay

In terms of AirPlay, AD7050W is compatible with:

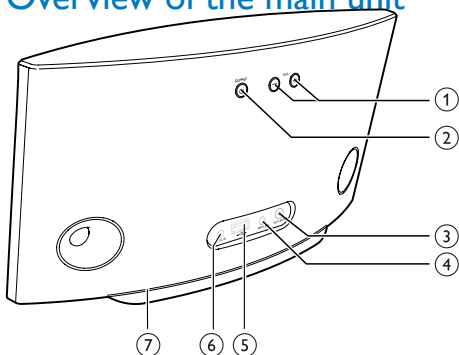
- a Wi-Fi enabled PC/Mac installed with iTunes 10.2.2 (or later); and

- the following iPod/iPhone/iPad models installed with iOS 4.3.3 (or later):

Made for

- iPhone 5
- iPhone 4S
- iPhone 4
- iPhone 3GS
- iPad (4th generation)
- iPad mini
- iPad (3rd generation)
- iPad 2
- iPad
- iPod touch (5th generation)
- iPod touch (4th generation)
- iPod touch (3rd generation)

Overview of the main unit



① VOL +/-

- Adjust volume.
- Press and hold both buttons to reset the unit.

② POWER ⏻

- Press to turn the unit on.
- In power-on mode, press and hold to turn the unit off.
- In power-on mode, press to turn the bottom light on/off.

③ WI-FI SETUP button/indicator

- Connect the unit to a Wi-Fi network.
- Show the Wi-Fi connection status of the unit.

④ MP3-LINK

- Connect an external audio player through the supplied MP3 link cable.

⑤ USB ➡

- Connect an iPod/iPhone/iPad through an Apple USB cable (not supplied).

⑥ DC IN

- Connect the power adaptor.

⑦ Bottom light

Get started to use AirPlay

To get started with AirPlay, you need to:

- 1 Upgrade your iPod touch/iPhone/iPad to the latest iOS version (iOS 4.3 or later).
 - Or install the latest version of iTunes (iTunes 10 or later) on your PC/Mac.
- 2 Connect power to AD7050W, then turn it on (see 'Prepare' on page 7).
- 3 Connect AD7050W to your existing home Wi-Fi network (see 'Connect to your home Wi-Fi network for AirPlay' on page 8).
- 4 Make sure that your iPod touch/iPhone/iPad or PC/Mac are also connected to the same Wi-Fi network.

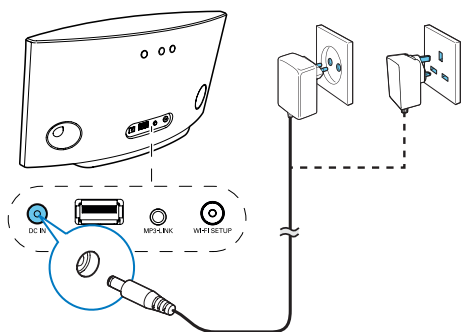
3 Prepare

Always follow the instructions in this chapter in sequence.

Connect power

! Caution

- Risk of product damage! Make sure that the power supply voltage matches the voltage printed on the bottom of the unit.
- Risk of electric shock! When you unplug the AC adaptor, always pull the plug from the socket. Never pull the cord.
- Before you connect the AC adaptor, make sure that you have completed all the other connections.



- Connect the AC power cord to
 - the **DC IN** socket on the back of the unit.
 - the wall power socket.

➡ After boot-up, the **Wi-Fi SETUP** indicator turns solid yellow.

- To turn the unit off, press and hold ϕ .
- To turn the unit on again, press and hold ϕ once more.

* Tip

- If the unit stays idle for more than 30 minutes, it turns off automatically.
- In power-on mode, you can press ϕ to turn on or off the LED light at the bottom of the unit.

Turn AD7050W on

- 1 Press ϕ on the back to turn the unit on.
- 2 Wait for successful boot-up of the unit.
 - ➡ The boot-up takes up to 25 seconds.
 - ➡ During boot-up, the **Wi-Fi SETUP** indicator on the back of the unit blinks yellow.

4 Connect to your home Wi-Fi network for AirPlay



To connect AD7050W to your existing home Wi-Fi network, you need to apply your home Wi-Fi settings to AD7050W. Choose your best setup method based on the preconditions listed below.

Precondition	Setup method
You have an iPod touch/iPhone/iPad upgraded to iOS 5.0 or later:	Choose method 1 (recommended) (see 'Method 1: Use iOS5 Wi-Fi network login sharing' on page 8).
Your Wi-Fi router is enabled with WPS (Wi-Fi Protected Setup) and supports PBC (Push Button Connection).	Choose method 2 (see 'Method 2: Connect to a WPS router' on page 9).


You have a Wi-Fi enabled device with an Internet browser, such as an iPod touch/iPhone/iPad or a Wi-Fi enabled PC/Mac.	Choose method 3 (see 'Method 3: Connect to a non-WPS Wi-Fi router' on page 10).
--	---

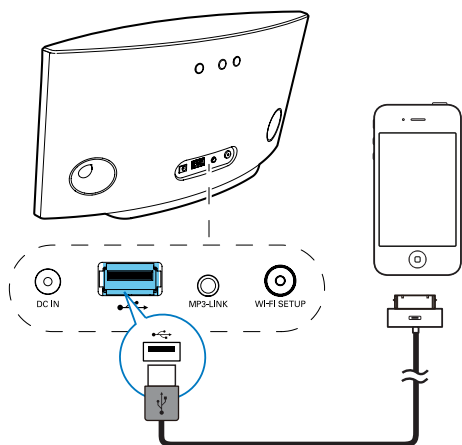
Before connection of AD7050W to your home Wi-Fi network, make sure that:

- ① your Wi-Fi router is powered on and working properly.
- ② AD7050W has been powered on and booted up successfully (see 'Turn AD7050W on' on page 10).

Once connected successfully, AD7050W will remember your home Wi-Fi settings. Then you can enjoy AirPlay whenever AD7050W is powered on and connected to your home Wi-Fi network automatically.

Method 1: Use iOS5 Wi-Fi network login sharing

- 1 Connect your iPod touch/iPhone/iPad to your home Wi-Fi network.
- 2 Connect an Apple USB cable (not supplied) to:
 - the **USB**  socket on the back of AD7050W.
 - the dock connector on your iPod/iPhone/iPad.



➔ After a while, the indicator on the back of AD7050W turns solid green, and the unit beeps.

➔ AD7050W is connected to your existing home Wi-Fi network successfully.

Method 2: Connect to a WPS router

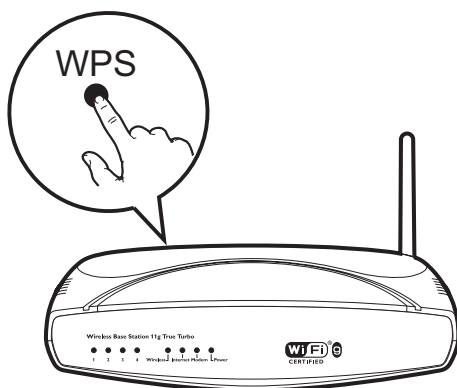
Note

- Before you press any button on AD7050W, make sure that AD7050W has been booted up successfully (see 'Turn AD7050W on' on page 7).

- 3 Press **WIFI SETUP** on the back of AD7050W.
➔ The following dialog box is displayed.

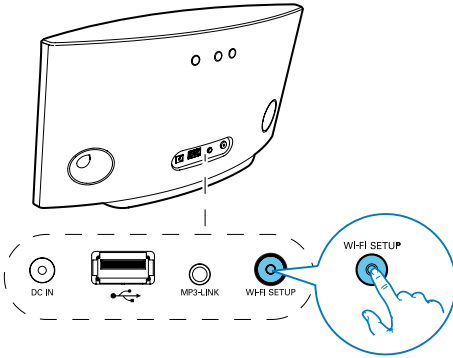


- 1 Press the WPS button on your home Wi-Fi router.



- 2 Shortly after step 1, press **Wi-Fi SETUP** on the back of AD7050W.
➔ The **Wi-Fi SETUP** indicator blinks red, yellow and green alternately.
➔ Within 2 minutes, the **WI-FI SETUP** indicator turns solid green, and the unit beeps.
➔ AD7050W is connected to your home Wi-Fi network successfully.

- 4 Tap **ALLOW** (allow) to share your Wi-Fi settings with AD7050W.



Tip

- For some Wi-Fi routers, you may need to hold the WPS button for Wi-Fi connection or enable the WPS PBC function from the router configuration pages. See the user manuals of the specific routers for details.
- If the **WI-FI SETUP** indicator on AD7050W does not turn solid green, it means that the Wi-Fi connection has failed. Please wait for 2 minutes and try again. If the problem remains, try to set up the Wi-Fi connection manually (see 'Method 3: Connect to a non-WPS Wi-Fi router' on page 10).
- If the Wi-Fi connection fails again, restart AD7050W, and then try again.

Method 3: Connect to a non-WPS Wi-Fi router



Note

- You can also follow the procedures below to connect AD7050W to a WPS router manually.

To connect AD7050W to a Wi-Fi router manually, you need access to AD7050W's built-in configuration web page for change of its internal Wi-Fi settings. To do so, you need a Wi-Fi enabled device with an Internet browser for temporary Wi-Fi connection to AD7050W. The Wi-Fi enabled device can be an iPod touch/ iPhone/iPad or a Wi-Fi enabled PC/Mac.

Follow the sequence below for connection of AD7050W to a non-WPS Wi-Fi router:

- 1 Collect settings of your home Wi-Fi router and write down on paper for use during AD7050W Wi-Fi setup (see 'Collect settings of your home Wi-Fi router' on page 10).
- 2 Make sure that AD7050W is in Assisted Wi-Fi Setup mode. If not, switch AD7050W to Assisted Wi-Fi Setup mode (see 'Switch AD7050W to Assisted Wi-Fi Setup mode' on page 11).
 ➔ A new Wi-Fi network created by AD7050W will appear, with the network name (SSID) of **Philips AD7050W**.
- 3 Connect your Wi-Fi enabled device to the newly created Wi-Fi network temporarily (see 'Connect your Wi-Fi enabled device to the newly created Wi-Fi network' on page 11).
- 4 Open the built-in web page of AD7050W with the Internet Browser of your Wi-Fi enabled device (see 'Open the built-in web page of AD7050W' on page 13).
- 5 Change the internal Wi-Fi settings of AD7050W based on the settings you wrote on paper at step 1 (see 'Change the internal Wi-Fi settings of AD7050W' on page 14).
- 6 Restore your Wi-Fi enabled device back to your existing home Wi-Fi settings (see 'Restore your Wi-Fi enabled device back to your existing home Wi-Fi setting' on page 16).

Collect settings of your home Wi-Fi router



Note

- Always consult the user manual of your home Wi-Fi router for detailed instructions.

- 1 Connect your Wi-Fi enabled device to your existing home Wi-Fi network.
- 2 Launch the Internet browser (for example, Apple Safari or Microsoft Internet Explorer) on your Wi-Fi enabled device.
- 3 Open the configuration page of your home Wi-Fi router.
- 4 Find the Wi-Fi settings tab and write down the following information on paper:
 - (A) Network name (SSID)
 - (B) Wi-Fi security mode (usually WPA or WPA2 if enabled)
 - (C) Wi-Fi password (if Wi-Fi security is enabled)
 - (D) DHCP mode (enabled or disabled)
 - (E) Static IP address settings (if DHCP mode is disabled)

Switch AD7050W to Assisted Wi-Fi Setup mode

Note

- Before you press any button on AD7050W, make sure that AD7050W has been booted up successfully (see 'Turn AD7050W on' on page 7).
- Press and hold **Wi-Fi SETUP** on the back of the device.
 - ↳ The **Wi-Fi SETUP** indicator blinks yellow and green.
 - ↳ A new Wi-Fi network created by AD7050W will appear; with the network name (SSID) of **Philips AD7050W**.
 - ↳ It may take up to 30 seconds for successful creation of this new Wi-Fi network.

Note

- After you finish manual Wi-Fi setup for AD7050W, the new Wi-Fi network created by AD7050W will disappear.
- If you fail to enter Assisted Wi-Fi Setup mode, power off AD7050W and power on it, then try again after successful boot-up.
- Make sure that there are no other Philips AirPlay-enabled devices in Assisted Wi-Fi Setup mode at the same time. Multiple Wi-Fi networks created this way may interfere with each other.

Connect your Wi-Fi enabled device to the newly created Wi-Fi network

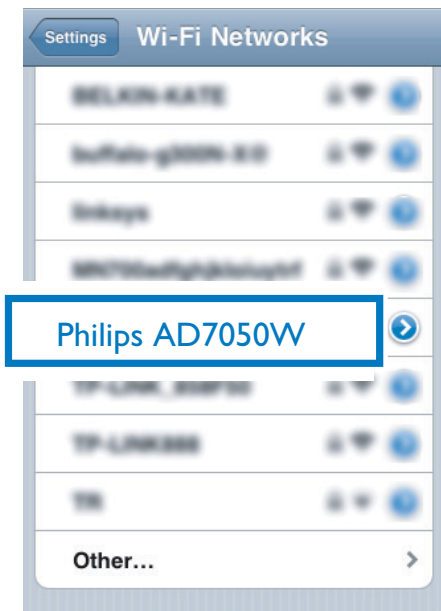
The new Wi-Fi network created by AD7050W only allows access of one Wi-Fi enabled device. To avoid interference from any other Wi-Fi devices, you are recommended to temporarily disable the Wi-Fi function on your other Wi-Fi devices.


Option 1: Use your iPod touch/iPhone/iPad

- 1 Select **Settings** -> **Wi-Fi** on your iPod touch/iPhone/iPad.



- 2 Select **Philips AD7050W** from the list of available networks.



- 3 Wait until successful Wi-Fi connection on your iPod touch/iPhone/iPad.
 ↳  is displayed at the upper left corner of your iPod touch/iPhone/iPad.



Tip

- If **Philips AD7050W** is not in the list, try to scan the available Wi-Fi networks again.

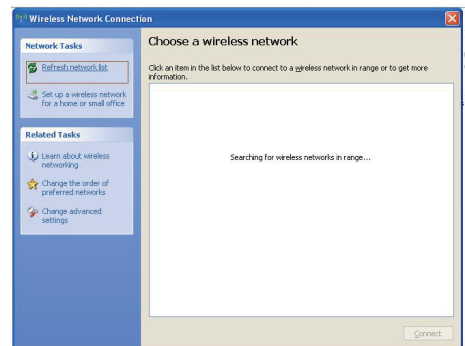
Option 2: Use your Wi-Fi enabled PC/Mac



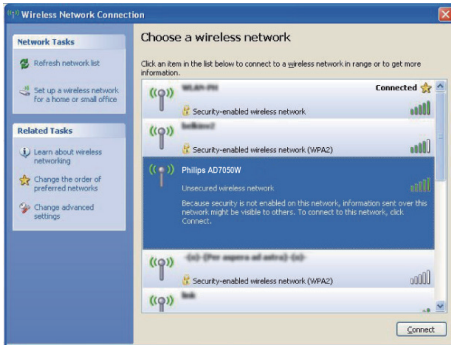
Note

- See the user manual of your PC/Mac for how to connect your PC/Mac to a Wi-Fi network.
- During Wi-Fi network connection, do not connect any network cable to your PC/Mac.

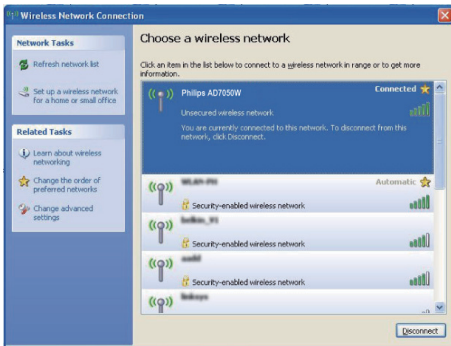
- 1 Open the Wi-Fi setup tool or control panel on your PC/Mac.
- 2 Scan the available Wi-Fi networks.



- 3 Select **Philips AD7050W** from the list of available networks.



- 4 Wait until successful Wi-Fi connection on your PC/Mac.



Tip


- If **Philips AD7050W** is not in the list, try to scan the available Wi-Fi networks again.

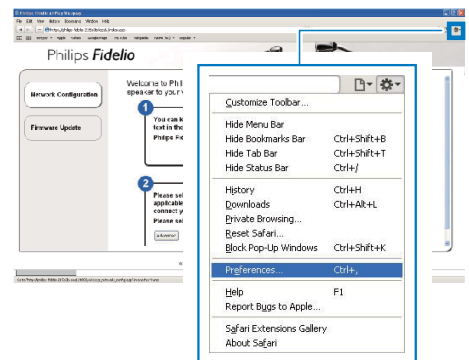
Open the built-in web page of AD7050W

- 1 Launch Apple **Safari** browser or any other Internet browser on your Wi-Fi enabled device.
- 2 Type in **192.168.1.1** at the browser address bar and confirm.
 ↳ The AD7050W configuration web page is displayed.

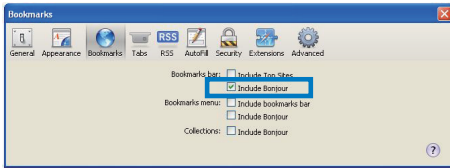


If you use Safari on your Wi-Fi enabled PC/Mac, you can also select 'Philips AD7050W XXX' from the Bonjour pull-down list to enter the AD7050W configuration web page directly.

- 1 Click  -> **Preferences**.
 ↳ The Bookmarks menu is displayed.

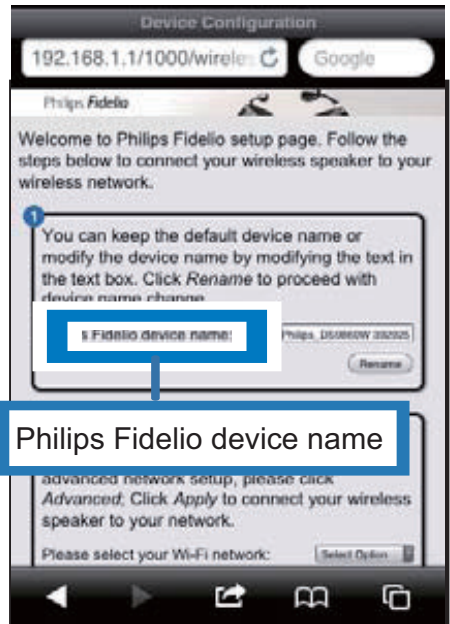
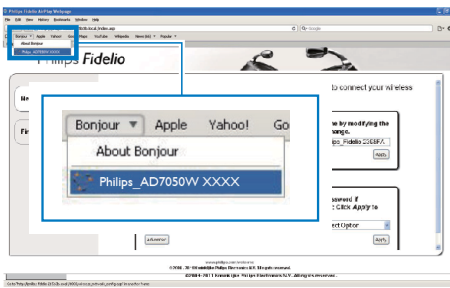


2 Tick Include Bonjour for Bookmarks bar.



3 Select 'Philips AD7050W XXXX' from the Bonjour pull-down list shown at the bookmarks bar.

→ The AD7050W configuration web page is displayed.



1 Rename your AD7050W in the box behind **Philips Fidelio device name**.

2 Click or tap **Rename**.

Configure the Wi-Fi settings

1 Click or tap ▼ behind **Select Option**.

→ The list of available Wi-Fi networks is displayed.

Change the internal Wi-Fi settings of AD7050W

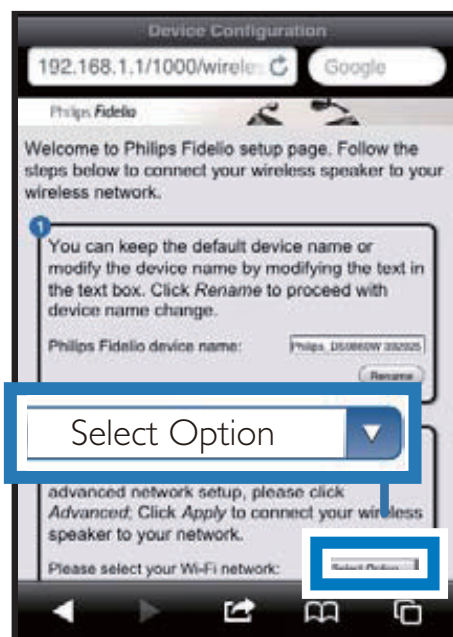
Note

- Make sure that the settings on the configuration web page match your home Wi-Fi network settings that you wrote on paper.

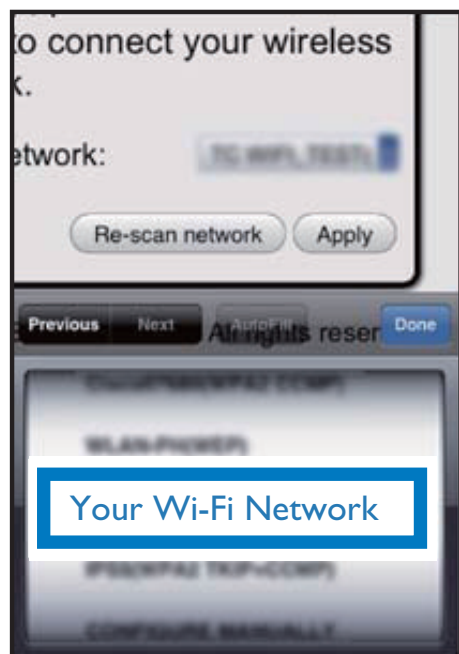
On the configuration web page of AD7050W, you can

- rename your AD7050W, and
- configure the Wi-Fi settings of AD7050W.

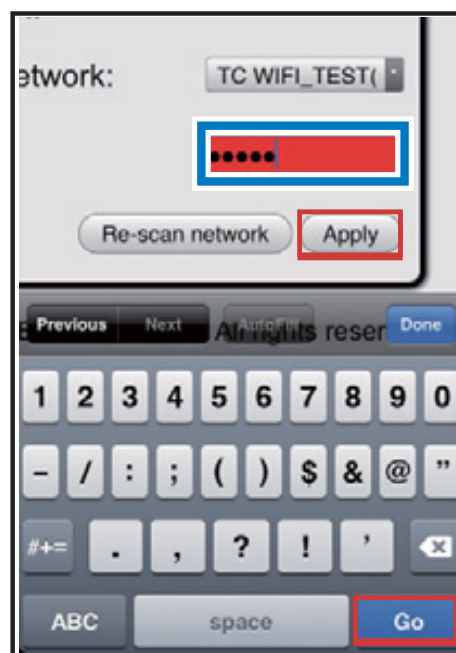
Change the device name



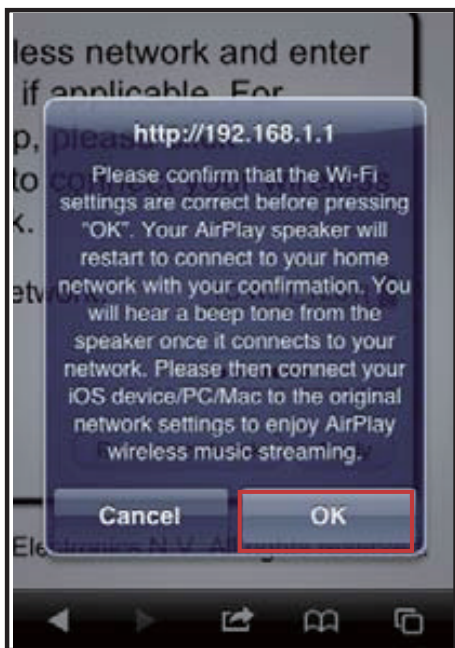
- 2 Select your Wi-Fi network from the list.



- 3 Enter the password for your Wi-Fi network on the red box, and then click or tap Apply.



- 4 Click or tap OK.



- ➔ After a while, the indicator on the back of AD7050W turns solid green, and the unit beeps.
- ➔ AD7050W is connected to your existing home Wi-Fi network successfully.

Note

- If the **WI-FI SETUP** indicator on AD7050W does not turn solid green, it means that the Wi-Fi connection has failed. Please power off both your Wi-Fi router and AD7050W and then power on them again to see whether AD7050W can be connected to your home Wi-Fi network. If the problem remains, try the above procedures again.
- After you finish the above changes or power-off and power-on of AD7050W, the new Wi-Fi network created by AD7050W will disappear.

Tip

- If you like, you can change the name of your AD7050W in **Advanced settings -> AirPlay Device Name** on the AD7050W configuration web page. This is helpful when you have multiple Philips AirPlay-enabled devices in your house and you need to distinguish between them.
- If you want to enter the network name (SSID) manually (for example, if you want to hide your SSID), go to **Advanced settings -> CONFIGURE MANUALLY** on the AD7050W configuration web page.

Restore your Wi-Fi enabled device back to your existing home Wi-Fi setting

Note

- Make sure that the settings at steps 2 to 3 below match your home Wi-Fi network settings you wrote on paper.

- 1 Select **Settings -> Wi-Fi** on your iPod touch/iPhone/iPad.
 - Or open the list of available Wi-Fi networks on your PC/Mac.



- 4 Wait until successful Wi-Fi connection to your home Wi-Fi network.

- 2 Select your network name (SSID) from the list of available wireless networks.



- 3 Enter the network key if required.

5 Play

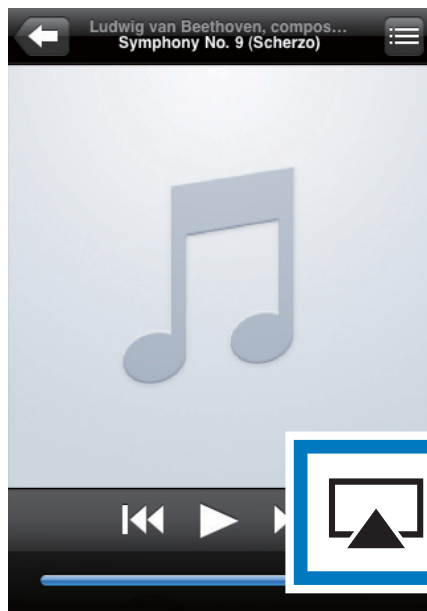
Stream audio from your iTunes music library to AD7050W

Note

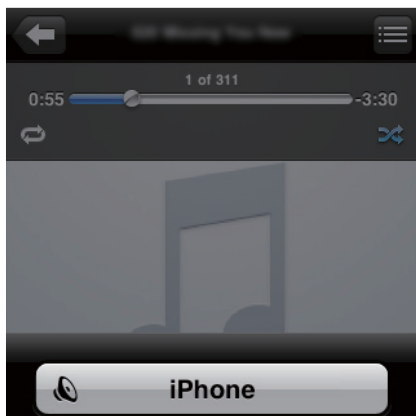
- Make sure that your iTunes host device is connected to the same Wi-Fi network as AD7050W. Your iTunes device can be an iPod touch/iPhone/iPad installed with iOS 4.3 (or later) or a Wi-Fi enabled PC/Mac installed with iTunes 10 (or later).
- For iPhone 4S users: To ensure optimal performance of AirPlay streaming, upgrade your iPhone 4S to iOS 5.1 or later.

Stream from your iPod touch/iPhone/iPad

- 1 Launch the **iPod/Music** application on your iPod touch/iPhone/iPad.
- 2 Tap the AirPlay icon.

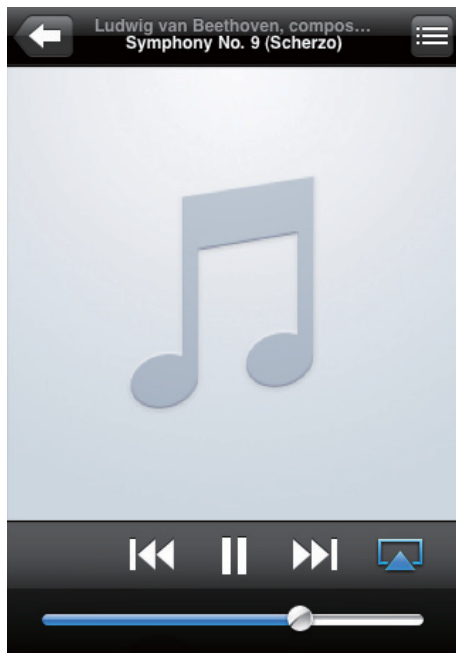


- 3 Select **Philips AD7050W XXXX** (or user customized name) from the AirPlay list.



Philips AD7050W xxx

Cancel



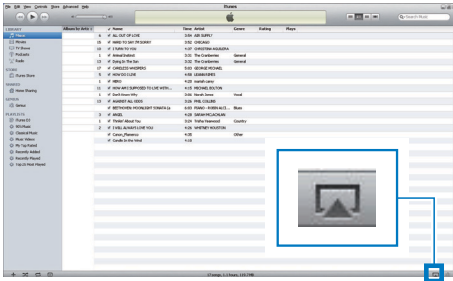
Note

- If you fail to hear music after successful setup, do one of the following on your iPod touch/iPhone/iPad:
- (1) Disconnect and then re-connect to the same Wi-Fi router again;
- (2) Close all applications running at the background;
- (3) Power off and then power on your iPod touch/iPhone/iPad again.

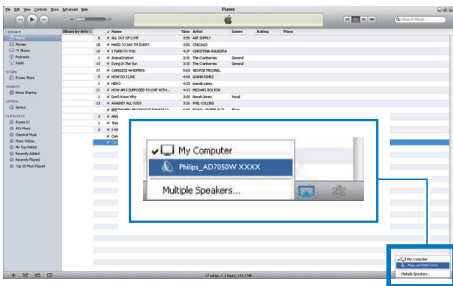
Stream from your PC/Mac

- 1 Launch iTunes 10 (or a later version) on your PC/Mac.
- 2 Click the AirPlay icon on the window.

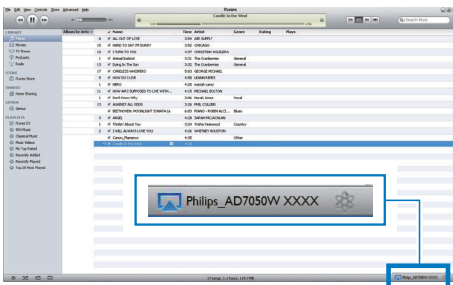
- 4 Select a media file and start play.
 ↳ After a while, you will hear music from AD7050W.





- 3 Select **Philips AD7050W XXXX** (or user customized name) from the AirPlay list.



- 4 Select a media file and start play.
 ↳ After a while, you will hear music from AD7050W.



Tip

- When you stream audio from your iTunes music library on a PC/Mac, you can select more than one AirPlay-enabled devices (if available) at step 3 to stream music to all of them at the same time.
- If you are using an earlier version of iTunes, the AirPlay icon may be  instead of .

Use advanced sound settings

If your iTunes host device is an iPod touch/iPhone/iPad:

For advanced sound settings and additional features, you can use your iPod touch/iPhone/iPad to download the **Philips SoundStudio** application from Apple App Store. It is a free application from Philips.

If your iTunes host device is a Wi-Fi enabled PC/Mac:

For advanced sound settings, you can use the equalizer available on iTunes directly (**View -> Show Equalizer**).



Tip

- See the iTunes help documentation for more details.

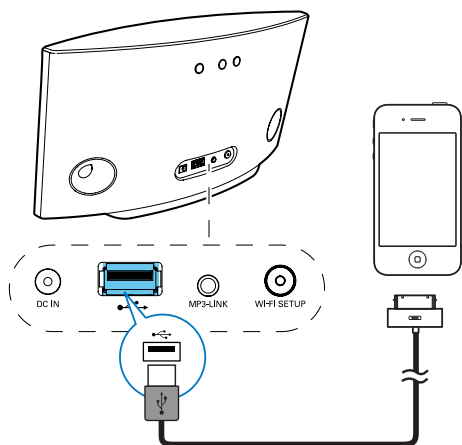
Play/charge your iPod/iPhone/iPad through USB socket



Note

- The USB socket is only compatible with iPod/iPhone/iPad.

You can play or charge your iPod/iPhone/iPad through the USB socket with an Apple USB cable (not supplied).

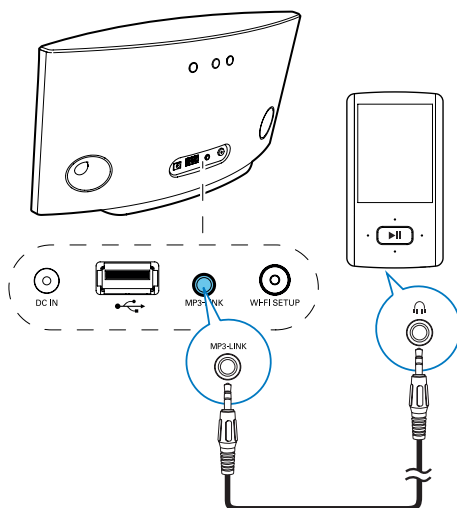


- Connect an Apple USB cable (not supplied) to:
 - the **USB**  socket on the back of AD7050W.
 - the dock connector on your iPod/iPhone/iPad.

Compatible iPod/iPhone/iPad

The USB socket supports play and charge of the following iPod, iPhone, and iPad models.

- iPad 2
- iPad
- iPhone 4S
- iPhone 4
- iPhone 3GS
- iPhone 3G
- iPhone
- iPod nano (2nd, 3rd, 4th, 5th, and 6th generation)
- iPod touch (1st, 2nd, 3rd, and 4th generation)



- 1 Connect a 3.5mm audio input cable (not supplied) to:
 - the **MP3 LINK** socket on the back of the unit.
 - the headphone socket on an external audio player.
- 2 Make sure that you have stopped AirPlay streaming and music play through the USB socket.
- 3 Start music play on the external audio player:
 - ↳ You can hear music from AD7050W.

Play from an external device

You can also listen to an external audio player through the unit.

6 Update firmware

Note

- You can only update the firmware from a PC/Mac.

Download the update file



- 1 On your PC/Mac, go to www.philips.com/support.
- 2 Enter the model number to find the latest firmware upgrade file available.
- 3 Save and unzip the upgrade file to your hard drive.

Update from the configuration page

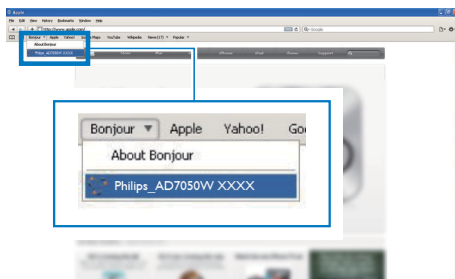
Warning

- Always connect your AD7050W to AC power for firmware upgrade. Never power off your AD7050W during firmware upgrade.

Note

- To use an Internet browser other than Apple Safari on your PC/Mac, remember to go to the Wi-Fi router configuration page and write down the IP address of your AD7050W. See the user manual of your Wi-Fi router for how to find the IP addresses of devices connected to the Wi-Fi router.

- 1 Power on AD7050W (see 'Turn AD7050W on' on page 7).
 - ↳ It takes about 25 seconds for the unit to boot up. During boot-up, the **WI-FI SETUP** indicator on the back of the unit blinks yellow.
 - ↳ After boot-up, you can hear a beep and the **WI-FI SETUP** indicator turns to solid green.
 - ↳ AD7050W is connected to the last configured Wi-Fi network automatically.
- 2 Make sure that AD7050W and your PC/Mac are connected to the same Wi-Fi router.
- 3 Open Apple **Safari** on your PC/Mac, then select '**Philips AD7050W XXXXXX**' from the Bonjour pull-down list.
 - Or open any other Internet browser on your PC/Mac, then type in the IP address of AD7050W (available on the Wi-Fi router configuration page) at the address bar.
 - ↳ The AD7050W configuration web page is displayed.



- 4 Follow the on-screen instructions to complete the firmware update.



Note

- In case the firmware update fails, you can try the above procedures again.
- After successful firmware update, if there is any problem with the Wi-Fi connection, restart AD7050W, and then try to set up the Wi-Fi network for AD7050W again (see 'Connect to your home Wi-Fi network for AirPlay' on page 8).

7 Product information

Note

- Product information is subject to change without prior notice.

Specifications

Amplifier

Rated Output Power	2 X 20 W RMS
Frequency Response	50 Hz - 20 kHz, ± 3 dB
Signal to Noise Ratio	> 86 dB
MP3 Link	600 mV RMS 20 kohm

Speakers

Speaker Impedance	8 ohm
Speaker Driver	66 mm full range
Sensitivity	84 dB/m/W

Wireless

Wireless standard	802.11b/g
Wireless security	WPA/WPA2 (8-63 characters)
Frequency range	2412 - 2462 MHz (CH1-CH11) (for /79, /37, /55, /97) 2412 - 2472 MHz (CH1-CH13) (for /12, /10, /05)
PBC (one button push)	Yes

General information

AC power	Input: 100 ~ 240 V, 50/60 Hz 2A
PHILIPS	
SWITCHING POWER SUPPLY MODEL: EFS05001800250 CE	Output: 18 V \approx 2.5 A
Operation Power Consumption	40 W
Power Consumption in Standby Mode	< 0.5 W
Dimensions	358 x 137 x 203 mm
- Main Unit (L x W x H)	
Weight	3.05 kg
- With Packing	2.10 kg
- Main Unit	

8 Troubleshooting



Warning

- Never remove the casing of this apparatus.

To keep the warranty valid, never try to repair the system yourself.

If you encounter problems when using this apparatus, check the following points before requesting service. If the problem remains unsolved, go to the Philips web site (www.philips.com/welcome). When you contact Philips, ensure that the apparatus is nearby and the model number and serial number are available.

No power

- Make sure that the AC power plug of the device is connected properly.
- Make sure that there is power at the AC outlet.

No sound

- Adjust the volume.
- Check the Wi-Fi network connection. Set up the network again if needed (see 'Connect to your home Wi-Fi network for AirPlay' on page 8).

No response from the unit

- Restart AD7050W, and then set up the Wi-Fi network for AD7050W again (see 'Connect to your home Wi-Fi network for AirPlay' on page 8).
- Disconnect and reconnect the AC power plug, and then switch on the device again.

Wi-Fi network connection failed

- Check if your Wi-Fi router is Wi-Fi 802.11b/g certified. This device

is only compatible with Wi-Fi 802.11b/g certified routers.

- If your Wi-Fi router is Wi-Fi 802.11n certified, make sure to enable the 802.11b/g mode. AD7050W does not support connection to routers with 802.11n only.
- This device does not support the WPS-PIN method.
- If your Wi-Fi router supports WPS and the WPS-PBC method but fails to connect to AD7050W, try the manual Wi-Fi setup method (see 'Method 3: Connect to a non-WPS Wi-Fi router' on page 10).
- Enable SSID broadcast on the Wi-Fi router.
- Keep away from potential sources of interference which may affect Wi-Fi signal, such as microwave ovens.
- If you fail to use your PC for Wi-Fi network setup, check whether your PC is using a Wi-Fi network. You cannot use Ethernet connection for AirPlay network setup.
- Make sure that the SSID name of your home router consists of alphanumeric characters, with no space or special characters like %/#/* inserted.
- If you choose to rename the AirPlay device '**Philips AD7050W XXXX**' in the setting menu, do not use special characters or symbols.
- For some new types of Wi-Fi routers, a network name (SSID) may be created automatically when you use WPS for connection. Always change the default network name (SSID) to a simple one that consists of alphanumerical characters, and also change the Wi-Fi security mode to secure your network.

Occasional breaking of AirPlay music streaming

Do one or all of the following:

- Move AD7050W closer to your Wi-Fi router.

- Remove any obstacles between AD7050W and your Wi-Fi router.
- Avoid using Wi-Fi channel which is overlapped by the nearby Wi-Fi network.
- Check if your network speed is fast enough (in cases where multiple devices share the same router, the AirPlay performance may be affected). Turn off the other devices connected to your home router.
- Enable the Quality of Service (QoS) option (if available on the Wi-Fi router).
- Turn off other Wi-Fi routers.

No AirPlay icon on my iTunes host device

- Make sure that AD7050W is already connected to your home Wi-Fi network.
- Before you open iTunes, make sure that you have enabled Bonjour service in your PC. Take Windows XP for example: to enable the service, you can click **Start->Control Panel**, and double-click **Administrative Tools-> Services->Bonjour Service**, then click **Start** followed by **OK** on the pop-up menu.
- If the problem remains, try to restart AD7050W.

AirPlay connection failed with Mac or PC

- Temporarily disable the firewall and security software to see whether it blocks the ports that AirPlay uses to stream content. See the help documentation of your firewall and security software on how to unblock the ports used by AirPlay.
- When you use iPod Touch/iPhone/iPad/Mac/PC for AirPlay, if the music play breaks or stops, try to restart your iPod Touch/iPhone/iPad, iTunes or AD7050W.
- Video streaming or FTP downloads may overload your router and therefore may cause interruptions during AirPlay music play. Try to reduce the load of your router.



Specifications are subject to change without notice.

2013 ©WOOX Innovations Limited. All rights reserved.

This product was brought to the market by WOOX Innovations Limited or one of its affiliates, further referred to in this document as WOOX Innovations, and is the manufacturer of the product. WOOX Innovations is the warrantor in relation to the product with which this booklet was packaged. Philips and the Philips Shield Emblem are registered trademarks of Koninklijke Philips N.V.

