

Always there to help you

Register your product and get support at
www.philips.com/welcome



AJ4000



User Manual

PHILIPS

Contents

1	Important	3
<hr/>		
2	Your clock radio	4
	What's in the box	4
<hr/>		
3	Get started	4
	Install battery	4
	Connect power	5
	Set clock	5
<hr/>		
4	Listen to FM radio	6
	Tune to FM radio stations	6
<hr/>		
5	Set alarm timer	6
	Set alarm	6
	Select alarm source	7
	Deactivate the alarm timer	7
	Snooze the alarm	7
<hr/>		
6	Other features	8
	Adjust brightness	8
	Set sleep timer	8
	Charge your mobile phone	8
<hr/>		
7	Product information	9
	Specifications	9
<hr/>		
8	Troubleshooting	10
<hr/>		
9	Notice	11

1 Important

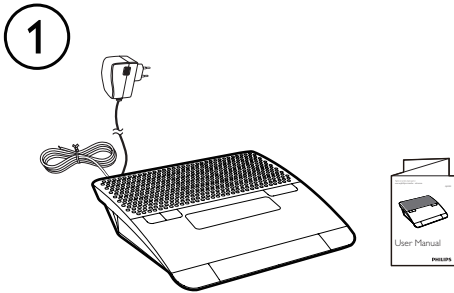
- Read these instructions.
- Heed all warnings.
- Follow all instructions.
- Do not block any ventilation openings. Install in accordance with the manufacturer's instructions.
- Do not install near any heat sources such as radiators, heat registers, stoves, or other apparatus (including amplifiers) that produce heat.
- Protect the power cord from being walked on or pinched, particularly at plugs, convenience receptacles, and the point where they exit from the clock radio.
- Only use attachments/accessories specified by the manufacturer.
- Unplug this clock radio during lightning storms or when unused for long periods of time.
- Refer all servicing to qualified service personnel. Servicing is required when the clock radio has been damaged in any way, such as power-supply cord or plug is damaged, liquid has been spilled or objects have fallen into the clock radio, the clock radio has been exposed to rain or moisture, does not operate normally, or has been dropped.
- Battery usage CAUTION – To prevent battery leakage which may result in bodily injury, property damage, or damage to the clock radio:
 - Install the battery correctly, + and - as marked on the clock radio.
 - Remove the battery when the clock radio is not used for a long time.
 - The battery shall not be exposed to excessive heat such as sunshine, fire or the like.
- This clock radio shall not be exposed to dripping or splashing.
- Do not place any sources of danger on the clock radio (e.g. liquid filled objects, lighted candles).
- Where the plug of the Direct Plug-in Adapter is used as the disconnect device, the disconnect device shall remain readily operable.

2 Your clock radio

Congratulations on your purchase, and welcome to Philips! To fully benefit from the support that Philips offers, register your product at www.philips.com/welcome.

What's in the box

Check and identify the contents of your package. (Fig. ①)



3 Get started

Always follow the instructions in this chapter in sequence.

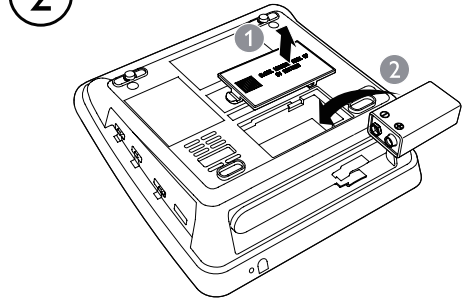
Install battery



Caution

- Risk of explosion! Keep the battery away from heat, sunshine or fire. Never discard battery in fire.
- The battery contains chemical substances, so it should be disposed of properly.

Insert one **9V 6F22** battery (not supplied) with correct polarity (+/-) as illustrated. (Fig. ②.)



Note

- The battery can only back up clock and alarm settings.

Connect power

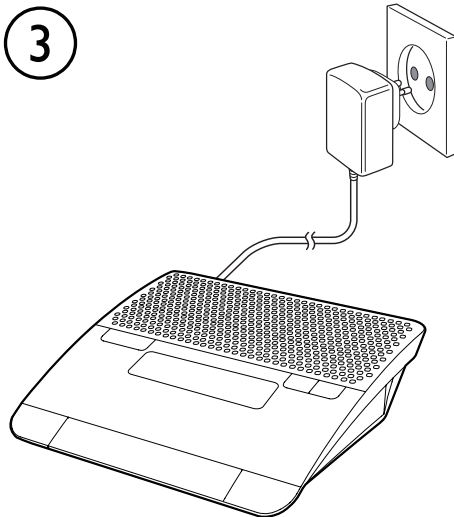
! Caution

- Risk of product damage! Make sure that the power voltage corresponds to the voltage printed on the back or underside of the clock radio.
- Risk of electric shock! When you unplug the power adapter; always pull the plug from the socket. Never pull the cord.

≡ Note

- The type plate is located at the bottom of the clock radio.

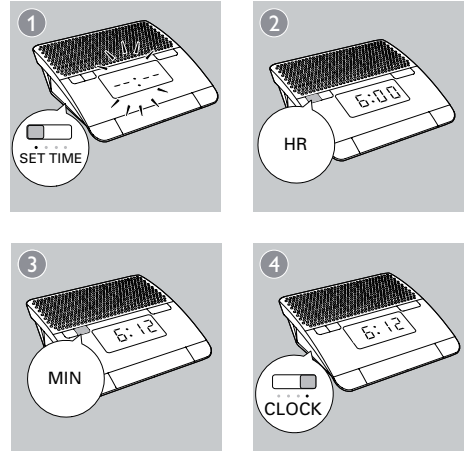
(Fig. ③)



Set clock

(Fig. ④)

4



- 1 Switch the slider to **SET TIME**.
↳ The hour and minute digits blink.
- 2 Press **HR** and **MIN** to adjust time.
- 3 Switch the slider to **CLOCK** to confirm the setting.

4 Listen to FM radio

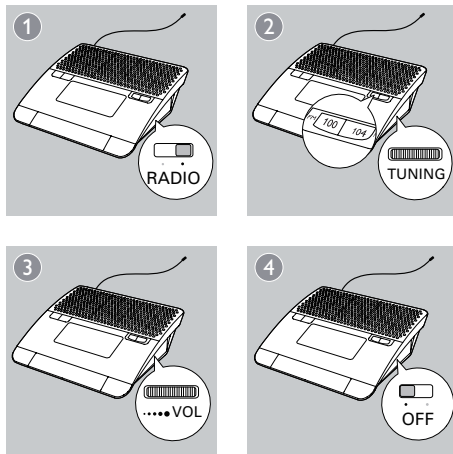
Note

- Keep the clock radio away from other electronic devices to avoid radio interference.
- For better reception, fully extend and adjust the position of the FM antenna.

Tune to FM radio stations

(Fig ⑤.)

⑤



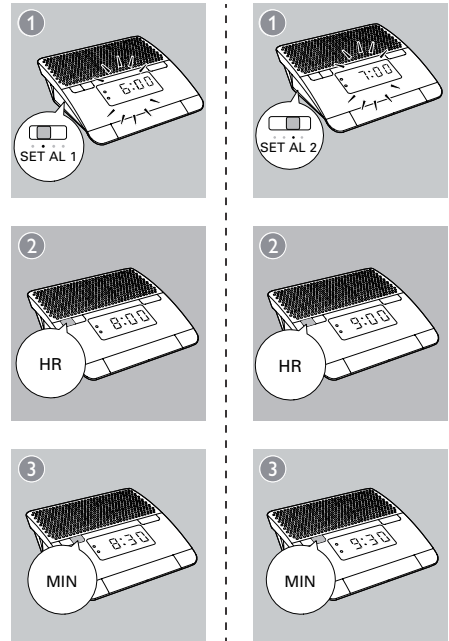
- 1** Switch the slider to **RADIO**.
- 2** Rotate **TUNING** to select a station.
↳ The indicator shows the radio frequency of the waveband.
- 3** While listening, rotate **VOL** to adjust volume.
- 4** Switch the slider to **OFF** to turn off the radio.

5 Set alarm timer

Set alarm

Follow the illustration to set the alarm (Fig. ⑥)

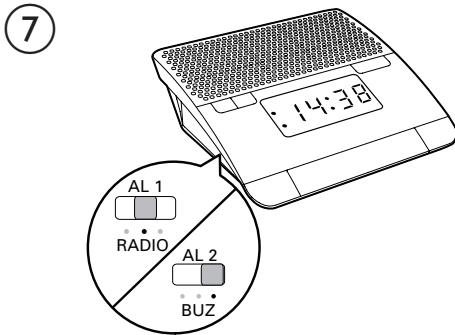
⑥



- **AL1:** Set the first alarm.
- **AL2:** Set the second alarm.

Select alarm source

(Fig. ⑦)



To select the last heard channel or buzzer as the alarm sound:

- **AL1:** Switch the slider to **RADIO** or **BUZ**.
- **AL2:** Switch the slider to **RADIO** or **BUZ**.
 - ↳ The corresponding alarm icon lights up.

Note

- The gentle wake-up function is available for buzzer only.

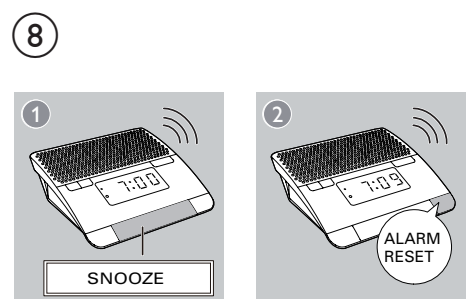
Deactivate the alarm timer

Switch **AL1** or **AL2** to **OFF** to deactivate the alarm clock.

- ↳ If the alarm timer is deactivated, the alarm indicator turns off.

Snooze the alarm

(Fig. ⑧)

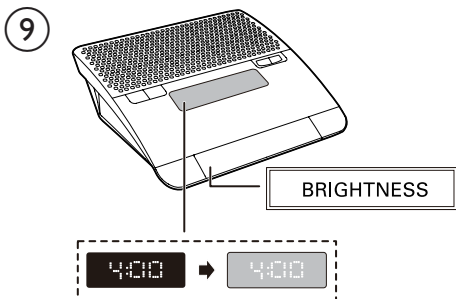


- 1 When alarm sounds, press **SNOOZE**.
 - ↳ The alarm snoozes and repeats ringing nine minutes later.
- 2 To reset the alarm, press **ALARM RESET**.
 - ↳ The alarm repeats ringing for the next day.

6 Other features

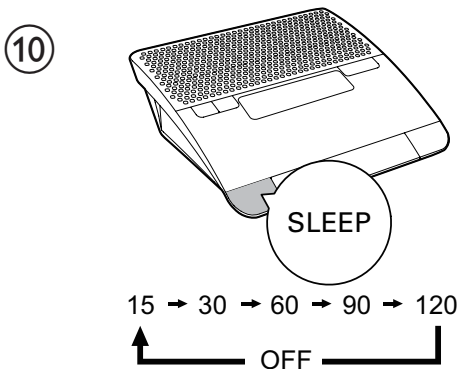
Adjust brightness

(Fig. ⑨)



Set sleep timer

(Fig. ⑩)



- 1 Press **SLEEP** repeatedly to set the sleep time.
↳ The radio turns on automatically.
- 2 To check the remaining sleep time, press **SLEEP** again.

To deactivate the sleep timer:

- Press **SLEEP** repeatedly until **[OFF]** appears.

Charge your mobile phone

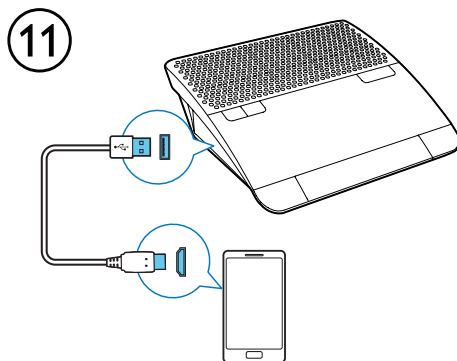
You can use this device to charge your mobile phone.

Note

- Make sure that the USB socket and the Micro USB are used only for charging.
- The USB charging and Micro USB charging are available when AC power is connected.

Option 1 :USB socket

(Fig. ⑪)



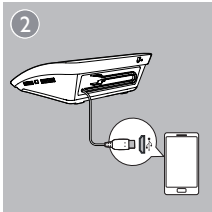
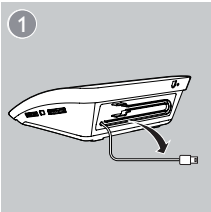
Note

- The USB cable is not supplied.
- Some USB cables may not work with this device due to different materials and product techniques.

Option 2 : Micro USB

(Fig. ⑫)

12



7 Product information



Note

- Product information is subject to change without prior notice.

Specifications

Amplifier

Rated Output Power 300mW RMS

Tuner (FM)

Tuning Range	87.5 - 108MHz
Sensitivity	
- Mono, 26dB S/N Ratio	<22 dBf
Total Harmonic Distortion	<3%
Signal to Noise Ratio	>45dB

General information

AC power (power adapter)	Brand name: Philips; Model: AS100-065-AE130; Input: 100-240 V~ 50/60 Hz; 0.5A; Output: 6.5 V = 1.3 A
Battery power	9 V
Operation Power Consumption	11 W
Standby Power Consumption	<1 W
USB Charge voltage	DC 5V
Micro USB Charge voltage	DC 5V

Dimensions:	
Main Unit	
(W x H x D)	173x 64x 159 mm
Weight:	
-Main Unit	0.5 kg

8 Troubleshooting



Warning

- Never remove the casing of this apparatus.

To keep the warranty valid, never try to repair the system yourself.

If you encounter problems when using this apparatus, check the following points before requesting service. If the problem remains unsolved, go to the Philips web site (www.philips.com/support). When you contact Philips, ensure that the apparatus is nearby and the model number and serial number are available.

No power

- Ensure that the AC power plug of the unit is connected properly.
- Ensure that there is power at the AC outlet.

No sound

- Adjust the volume.

No response from the unit

- Disconnect and reconnect the AC power plug, then turn on the unit again.

No charging

- Use the USB cable bypacked with your device for charging.

Poor radio reception

- Increase the distance between the unit and your TV or VCR.
- Fully extend the FM antenna.

Alarm does not work

- Set the clock/alarm correctly.

Clock/alarm setting erased

- Power has been interrupted or the power plug has been disconnected.
- Back up battery is used up.
- Reset the clock/alarm.

9 Notice

Any changes or modifications made to this device that are not expressly approved by Philips Consumer Lifestyle may void the user's authority to operate the equipment.



This product complies with the radio interference requirements of the European Community.



Your product is designed and manufactured with high quality materials and components, which can be recycled and reused.



When this crossed-out wheeled bin symbol is attached to a product it means that the product is covered by the European Directive 2002/96/EC.

Please inform yourself about the local separate collection system for electrical and electronic products.

Please act according to your local rules and do not dispose of your old products with your normal household waste. Correct disposal of your old product helps to prevent potential negative consequences for the environment and human health.



Your product contains batteries covered by the European Directive 2006/66/EC, which cannot be disposed with normal household waste. Please inform yourself about the local rules on separate collection of batteries

because correct disposal helps to prevent negative consequences for the environmental and human health.

Environmental information

All unnecessary packaging has been omitted. We have tried to make the packaging easy to separate into three materials: cardboard (box), polystyrene foam (buffer) and polyethylene (bags, protective foam sheet.)

Your system consists of materials which can be recycled and reused if disassembled by a specialized company. Please observe the local regulations regarding the disposal of packaging materials, exhausted batteries and old equipment.

2012 © Koninklijke Philips Electronics N.V. All rights reserved.

Specifications are subject to change without notice. Trademarks are the property of Koninklijke Philips Electronics N.V. or their respective owners. Philips reserves the right to change products at any time without being obliged to adjust earlier supplies accordingly.



Specifications are subject to change without notice
© 2012 Koninklijke Philips Electronics N.V.
All rights reserved.

AJ4000_12_UM_V1.0

