



Philips Fidelio  
Wireless Bluetooth®  
headphones

#### High resolution audio

On-ear  
Deluxe memory foam cushions  
NFC



M2BTBK

## High fidelity, wireless enjoyment. Wherever you go

At home or on the go, high definition sound and seamless Bluetooth® connectivity is all yours with the Fidelio M2BT. NFC technology ensures one-tap wireless pairing, plus intuitive controls let you switch easily between music and calls.

#### Pristine sound – wirelessly

- High Resolution audio reproduces music in its purest form
- Optimized 40mm neodymium drivers for pure authentic sound
- Acoustically sealed to keep sound details in, noise out
- Bass Reflex System delivers clear, dynamic and balanced bass
- Bluetooth® 4.0 compatibility for superb audio transition

#### Intuitive and enjoyable ease of use

- Earshell buttons for intuitive control of music and calls
- 1.2 meter audio cable for when your battery runs out
- 1 meter USB charging cable for recharging
- Dual built-in mic cuts ambient noise for better call quality

#### Move in comfort

- Deluxe memory foam cushions for an ergonomic fit
- Headband crafted with rib-woven fibers for flexible strength

**WHAT IF???**  
AWARDS 2014

On-ear headphones  
Best wireless headphones  
Philips Fidelio M2BT



**PHILIPS**  
Fidelio

Wireless Bluetooth® headphones  
High resolution audio On-ear, Deluxe memory foam cushions, NFC

M2BTBK/00

## Highlights

### High resolution audio



High Resolution Audio offers the best in audio performance, reproducing original studio master recordings more faithfully than 16bit/44.1kHz CD formats. This uncompromising quality makes High Resolution Audio the best sound companion for the music lover. Fidelio headphones meet the stringent standards required for the Hi-Res Audio stamp of quality. Whether enjoying your Hi-Res collection or a more traditional music source, the smooth extended high frequencies of the Fidelio headphone range help you get more from your music.

### 40mm high definition drivers



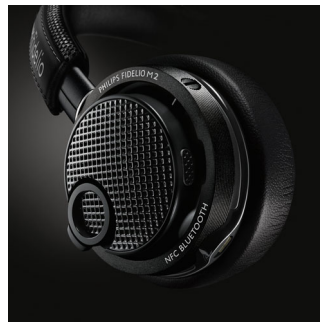
Each speaker driver is carefully hand picked, tuned and tested before being paired to ensure the most balanced natural sound. The 40mm drivers utilize high power neodymium magnets to deliver true high definition sound in a wide dynamic range, reproducing even the most minute details.

### Acoustic seal



The Fidelio headphone features an acoustic seal that's a specially designed ribbon lock built into the internal chamber, which eliminates any unnecessary sound leakage and preserves sound details. Not only do you get excellent bass extension, but also immersive enjoyment of every superb detail of your music, without environmental disturbances.

### Bass Reflex System (BRS)



The headphone's acoustic closed-back architecture features a Bass Reflex System that essentially comprises ear-shells with strategically placed vents. These regulate the air pressure within the internal chamber, providing the diaphragm with a controlled environment for optimal acoustic response. Working in conjunction with the acoustic seal capture, every natural sound detail is isolated and precise and dynamic bass is delivered, without any compromising on sound clarity.

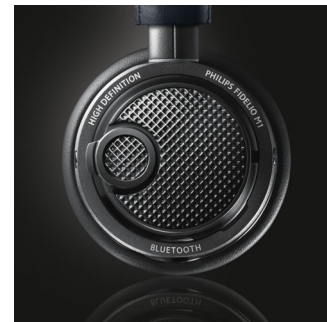
### Bluetooth® 4.0

Advanced Bluetooth® 4.0 technology, makes for superb, high definition musical enjoyment.

### Dual built-in microphones

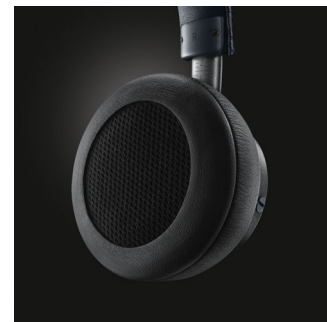
The M2BT Headphones are equipped with two microphones - one for voice and another that measures ambient noise, which automatically adjusts sound for optimal call quality.

### Intuitive earshell controls



Intuitive buttons conveniently located on the earshell make for easy switching between your music and calls. You can change tracks, play and pause your music as well as take and end calls, adjust volume – all at your fingertips.

### Memory foam earpads



The materials used for the Fidelio M2BT have been carefully selected to ensure long-wearing comfort and enhanced sound performance. Memory foam earpads with breathable materials disperse pressure and heat build-up, so the Fidelio M1 headphones feel and sound exceptional.

# Specifications

## Sound

- Impedance: 16 Ohm
- Sensitivity: 107 dB
- Speaker diameter: 40 mm
- Maximum power input: 40 mW
- Distortion: < 0.1% THD
- Acoustic system: Closed
- Diaphragm: PET
- Magnet type: Neodymium
- Type: Dynamic
- Frequency response 7-40000 Hz: when using the headphone cable supplied

## Connectivity

- Cable Connection: Oxygen free cable (1.1m)
- Audio Connections: 3.5mm Line in
- Bluetooth profiles: A2DP, AVRCP, HFP, HSP
- Maximum range: Up to 15 m

## Accessories

- Storage pouch
- Audio cable: 1.2m 3.5mm Audio Cable
- Quick start guide: Included
- USB cable: Included for charging

## Packaging dimensions

- EAN: 69 23410 73172 9
- Packaging dimensions (W x H x D): 6.7 x 8.9 x 3.1 inch
- Packaging dimensions (W x H x D): 17 x 22.5 x 8 cm
- Gross weight: 1.08 lb
- Gross weight: 0.49 kg

- Nett weight: 0.631 lb
- Nett weight: 0.286 kg
- Number of products included: 1
- Packaging type: Carton
- Tare weight: 0.449 lb
- Tare weight: 0.204 kg
- Type of shelf placement: Both

## Power

- Battery Type: LI-Polymer
- Music playtime: 10 hrs
- Standby time: 350 hrs
- Talk time: 10 hrs

## Outer Carton

- Gross weight: 2.557 lb
- Gross weight: 1.16 kg
- GTIN: 1 69 23410 73172 6
- Outer carton (L x W x H): 7.3 x 7.1 x 8.9 inch
- Outer carton (L x W x H): 18.5 x 18 x 22.5 cm
- Nett weight: 1.261 lb
- Nett weight: 0.572 kg
- Number of consumer packagings: 2
- Tare weight: 1.296 lb
- Tare weight: 0.588 kg

## Product dimensions

- Product dimensions (W x H x D): 15 x 18 x 7 cm
- Product dimensions (W x H x D): 5.9 x 7.1 x 2.8 inch
- Weight: 0.19 kg
- Weight: 0.419 lb



Issue date 2016-04-26

Version: 10.4.5

12 NC: 8670 001 16404  
EAN: 06 92341 07317 29

© 2016 Koninklijke Philips N.V.  
All Rights reserved.

Specifications are subject to change without notice.  
Trademarks are the property of Koninklijke Philips N.V.  
or their respective owners.

[www.philips.com](http://www.philips.com)