

Register your product and get support at
www.philips.com/welcome

DVD Mini Hi-Fi System

FWD197/98



EN User manual

TH คู่มือผู้ใช้

PHILIPS

Contents

1 Important	2	7 Listen to the radio	21
Safety	2	Tune to a radio station	21
Notice	4	Program radio stations automatically	21
		Program radio stations manually	21
		Select a preset radio station	21
2 Your DVD Mini Hi-Fi System	5	8 Play tape	22
Introduction	5		
What's in the box	5	9 Adjust sound	23
Overview of the main unit	6	Adjust volume	23
Overview of the remote control	7	Boost sound power	23
		Mute sound	23
		Select a preset sound effect	23
		Enhance bass	23
3 Connect	9	10 Other features	24
Connect speakers	9	Listen to an external device	24
Connect TV (video)	9	Record from disc	24
Connect an external audio system (optional)	10	Record from radio	24
		Record from external source	24
		Set the sleep timer	24
		Record to a digital recorder	24
		Listen through headphone	25
4 Get started	12	11 Product information	26
Install remote control batteries	12	Specifications	26
Set the clock	12	Supported disc formats	27
Turn on	12	USB playability information	27
Select the correct source on TV	12	Maintenance	28
Select the correct TV system	13		
Change system menu language	13	12 Troubleshooting	29
5 Play	14	13 Glossary	31
Play disc	14		
Play from USB	14		
Play DivX video	15		
Play MP3/WMA/picture files	15		
Play control	15		
Play options	16		
Picture view options	17		
6 Adjust settings	18		
System setup	18		
Language setup	19		
Audio setup	20		

1 Important

Safety

Important Safety Instructions

- ① Read these instructions.
- ② Keep these instructions.
- ③ Heed all warnings.
- ④ Follow all instructions.
- ⑤ Do not use this apparatus near water.
- ⑥ Clean only with dry cloth.
- ⑦ Do not block any ventilation openings. Install in accordance with the manufacturer's instructions.
- ⑧ Do not install near any heat sources such as radiators, heat registers, stoves, or other apparatus (including amplifiers) that produce heat.
- ⑨ Protect the power cord from being walked on or pinched, particularly at plugs, convenience receptacles, and the point where they exit from the apparatus.
- ⑩ Only use attachments/accessories specified by the manufacturer.
- ⑪ Use only with the cart, stand, tripod, bracket, or table specified by the manufacturer or sold with the apparatus. When a cart is used, use caution when moving the cart/apparatus combination to avoid injury from tip-over.
- ⑫ Unplug this apparatus during lightning storms or when unused for long periods of time.
- ⑬ Refer all servicing to qualified service personnel. Servicing is required when the apparatus has been damaged in any way, such as power-supply cord or plug is damaged, liquid has been spilled or objects have fallen into the apparatus, the apparatus has been exposed to rain or moisture, does not operate normally, or has been dropped.
- ⑭ Battery usage **CAUTION** – To prevent battery leakage which may result in bodily injury, property damage, or damage to the unit:
 - Install all batteries correctly, + and - as marked on the unit.
 - Do not mix batteries (old and new or carbon and alkaline, etc.).
 - Remove batteries when the unit is not used for a long time.
- ⑮ Apparatus shall not be exposed to dripping or splashing.
- ⑯ Do not place any sources of danger on the apparatus (e.g. liquid filled objects, lighted candles).
- ⑰ This product may contain lead and mercury. Disposal of these materials may be regulated due to environmental considerations. For disposal or recycling information, please contact your local authorities or the Electronic Industries Alliance: www.eiae.org.



Know these safety symbols





This 'bolt of lightning' indicates uninsulated material within your unit may cause an electrical shock. For the safety of everyone in your household, please do not remove product covering.

The 'exclamation point' calls attention to features for which you should read the enclosed literature closely to prevent operating and maintenance problems.

WARNING: To reduce the risk of fire or electric shock, this apparatus should not be exposed to rain or moisture and objects filled with liquids, such as vases, should not be placed on this apparatus.

CAUTION: To prevent electric shock, match wide blade of plug to wide slot, fully insert.

- Where the MAINS plug or an appliance coupler is used as the disconnect device, the disconnect device shall remain readily operable.

Warning

- Never remove the casing of this apparatus.
- Never lubricate any part of this apparatus.
- Never place this apparatus on other electrical equipment.
- Keep this apparatus away from direct sunlight, naked flames or heat.
- Never look into the laser beam inside this apparatus.
- Ensure that you always have easy access to the power cord, plug or adaptor to disconnect this apparatus from the power.

Hearing safety

Listen at a moderate volume.

- Using headphones at a high volume can impair your hearing. This product can produce sounds in decibel ranges that may cause hearing loss for a normal person, even for exposure less than a minute. The higher decibel ranges are offered for those that may have already experienced some hearing loss.
- Sound can be deceiving. Over time your hearing 'comfort level' adapts to higher volumes of sound. So after prolonged listening, what sounds 'normal' can actually be loud and harmful to your hearing. To guard against this, set your volume to a safe level before your hearing adapts and leave it there.

To establish a safe volume level:

- Set your volume control at a low setting.
- Slowly increase the sound until you can hear it comfortably and clearly, without distortion.

Listen for reasonable periods of time:

- Prolonged exposure to sound, even at normally 'safe' levels, can also cause hearing loss.
- Be sure to use your equipment reasonably and take appropriate breaks.

Be sure to observe the following guidelines when using your headphones.

- Listen at reasonable volumes for reasonable periods of time.
- Be careful not to adjust the volume as your hearing adapts.
- Do not turn up the volume so high that you can't hear what's around you.
- You should use caution or temporarily discontinue use in potentially hazardous situations. Do not use headphones while operating a motorized vehicle, cycling, skateboarding, etc.; it may create a traffic hazard and is illegal in many areas.

Notice

Any changes or modifications made to this device that are not expressly approved by Philips Consumer Lifestyle may void the user's authority to operate the equipment.



The making of unauthorized copies of copy-protected material, including computer programs, files, broadcasts and sound recordings, may be an infringement of copyrights and constitute a criminal offence. This equipment should not be used for such purposes.

This product incorporates copyright protection technology that is protected by U.S. patents and other intellectual property rights. Use of this copyright protection technology must be authorized by Macrovision, and is intended for home and other limited viewing uses only unless otherwise authorized by Macrovision. Reserve engineering or disassembly is prohibited.

Environmental information

All unnecessary packaging has been omitted. We have tried to make the packaging easy to separate into three materials: cardboard (box), polystyrene foam (buffer) and polyethylene (bags, protective foam sheet.)

Your system consists of materials which can be recycled and reused if disassembled by a specialized company. Please observe the local regulations regarding the disposal of packaging materials, exhausted batteries and old equipment.



Manufactured under license from Dolby Laboratories. Dolby and the double-D symbol are trademarks of Dolby Laboratories.

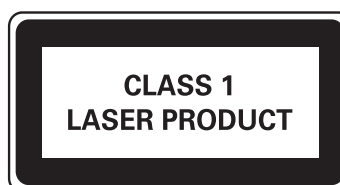


DivX, DivX Certified, and associated logos are trademarks of DivX, Inc. and are used under license.



Windows Media and the Windows logo are trademarks, or registered trademarks of Microsoft Corporation in the United States and/or other countries.

This apparatus includes this label:



2 Your DVD Mini Hi-Fi System

Congratulations on your purchase, and welcome to Philips! To fully benefit from the support that Philips offers, register your product at www.philips.com/welcome.

Introduction



With this unit, you can enjoy:

- Video from DVDs, VCDs, and DivX files that are stored on USB devices.
- Audio from audio CDs, radio, tape, external devices, and MP3/WMA files that are stored on USB devices.
- Pictures from picture discs or stored on USB devices.

The unit offers you multiple sound effect settings that enrich sound with Digital Sound Control (DSC) and Dynamic Bass Boost (DBB). The unit supports the following media formats:



You can play DVDs with the following region code:

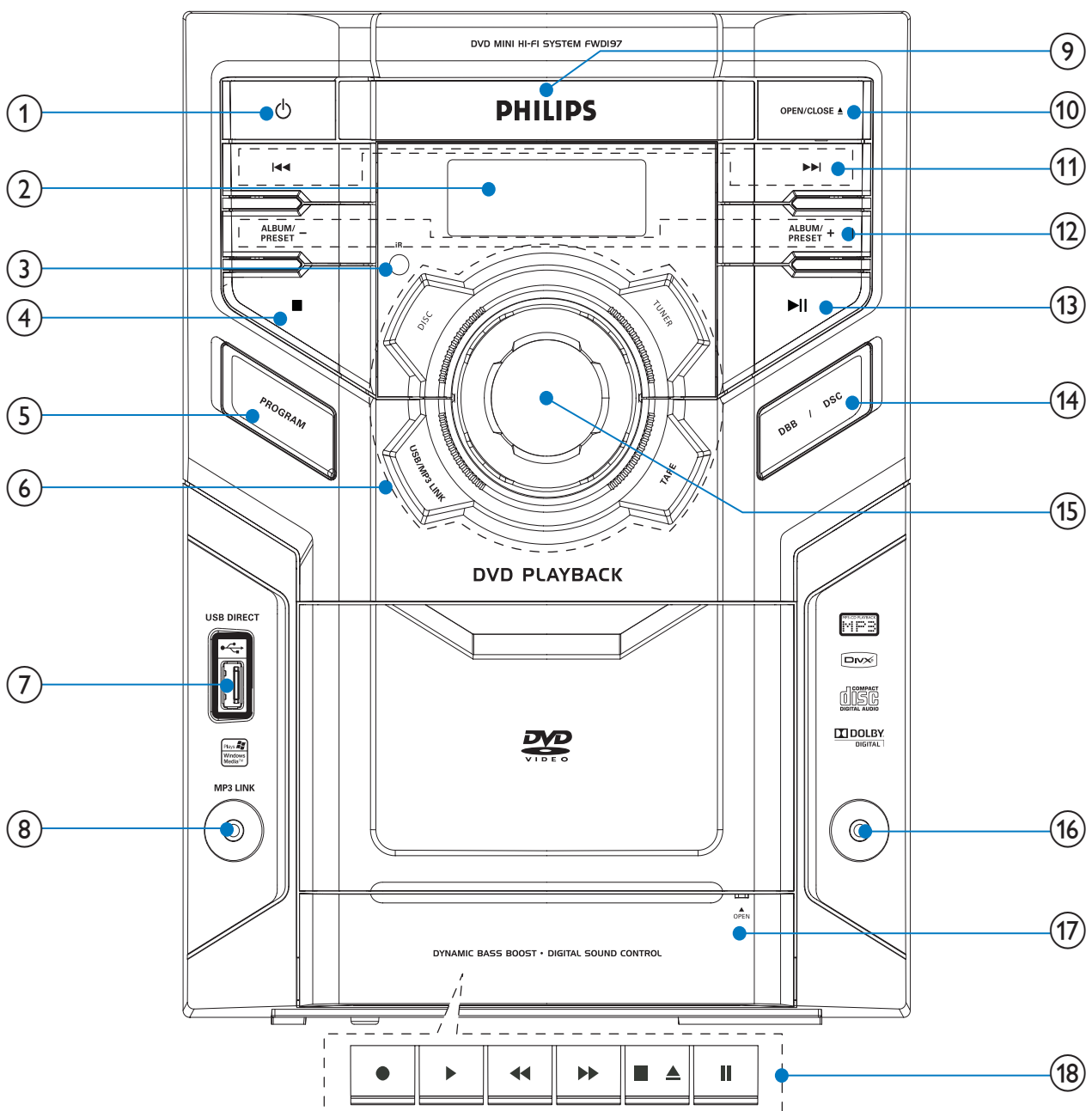
DVD region code	Countries
 	Southeast Asia, South Korea, Taiwan, Hong Kong, Macau

What's in the box

Check and identify the contents of your package:

- Main unit
- Speaker box x 2
- Remote control
- Video cable
- MP3 link cable
- User manual
- Quick start guide

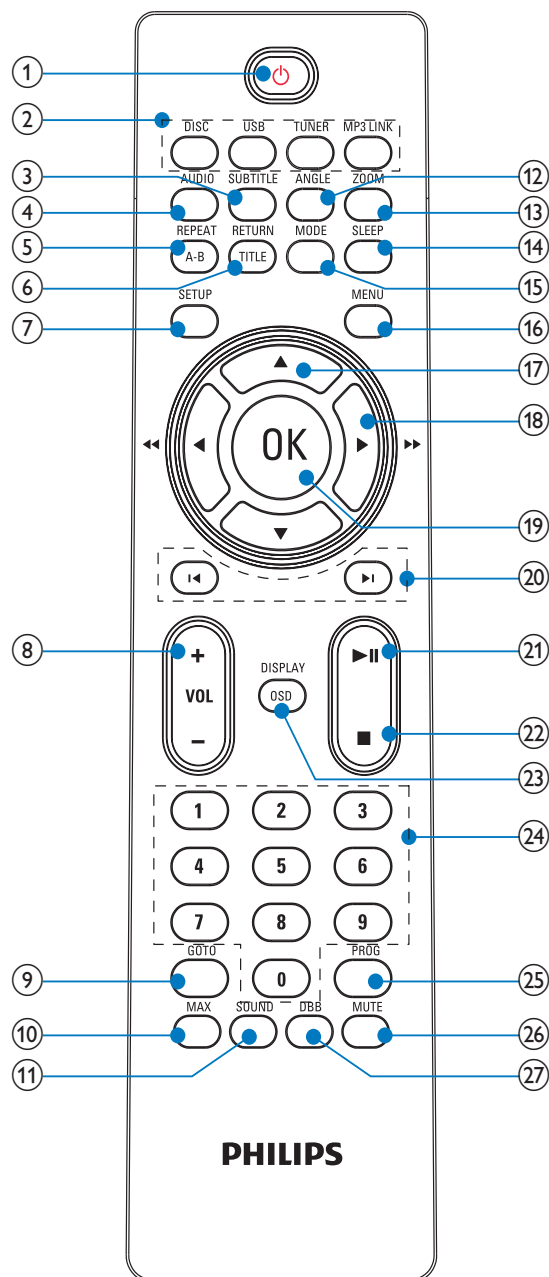
Overview of the main unit



- ①
 - Turn on the unit, or switch to standby mode.
- ② **Display panel**
 - Show current status.
- ③ **IR sensor**
- ④
 - Stop play or erase a program.
- ⑤ **PROGRAM**
 - Program tracks.
- ⑥ **EN**
- ⑦
 - Jack for a USB mass storage device.
- ⑧ **MP3 LINK**
 - Audio input jack (3.5mm) for an external audio device.
- ⑨
- ⑩
- ⑪
- ⑫
- ⑬
- ⑭
- ⑮
- ⑯
- ⑰
- ⑱

- ⑨ **Disc compartment**
- ⑩ **OPEN/CLOSE ▲**
 - Open or close the disc compartment.
- ⑪ **⏮️/⏭️**
 - Skip to the previous/next track/title/ chapter.
 - Search within a track/title/chapter.
 - Tune to a radio station.
- ⑫ **ALBUM/PRESET +/-**
 - Select a preset radio station.
 - Skip to the previous/next album.
- ⑬ **▶️||**
 - Start or pause play.
- ⑭ **DBB/DSC**
 - Turns on or off dynamic bass enhancement.
 - Select a preset sound setting.
- ⑮ **Volume control**
 - Adjust volume.
 - Adjust time.
- ⑯ **🎧**
 - Connect headphones.
- ⑰ **OPEN**
 - Pull to open the tape button cover.
- ⑱ **Tape controls**
 - ●
Start to record.
 - ▶️
Start tape play.
 - ⏮️/⏭️
Fast rewind/forward the tape.
 - ■▲
Stop the tape play or open the tape door.
 - ||
Pause tape play or pause recording.

Overview of the remote control



- ① **⏻**
 - Turn on the unit, or switch to standby mode.
- ② **Source buttons (DISC, USB, TUNER, MP3 LINK)**
 - Select a source: DISC, USB, TUNER, or MP3 LINK.

- ③ **SUBTITLE**
 - Select a DVD subtitle language.
- ④ **AUDIO**
 - For DVD, select an audio language.
 - For VCD, select an audio channel.
- ⑤ **REPEAT A-B**
 - Repeat a specific section within a track/title/chapter.
- ⑥ **RETURN/TITLE**
 - Return to the previous menu/title.
- ⑦ **SETUP**
 - Access or exit the system setup menu.
- ⑧ **VOL +/-**
 - Adjust volume.
 - Adjust time.
- ⑨ **GOTO**
 - During disc play: specify a position to start play.
- ⑩ **MAX**
 - Turn on/off the optimal mix of sound features.
- ⑪ **SOUND**
 - Select a preset sound setting.
- ⑫ **ANGLE**
 - Select a viewing angle of a DVD
- ⑬ **ZOOM**
 - Zoom into or out of an image.
- ⑭ **SLEEP**
 - Set the sleep timer.
- ⑮ **MODE**
 - Select a play mode.
- ⑯ **MENU**
 - For DVD/VCD, access or exit the disc menu.
 - For video discs with playback control(PBC): turn on/off PBC.
- ⑰ ▲/▼
 - Navigate through the menu.
- ⑱ ◀/▶(◀◀/▶▶)
 - Navigate through the menu.
 - Fast search backward/forward.
 - Tune to a radio station.
- ⑲ OK
 - Confirm a selection.
- ⑳ ⏮/⏭
 - Skip to the previous/next track.
- ㉑ ▶⏮
 - Start or pause play.
- ㉒ ■
 - Stop play or erase a program.
- ㉓ **OSD/DISPLAY**
 - Display play information on a connected TV.
 - Set the clock.
- ㉔ **Numeric keypad**
 - Input a number.
 - During play, select a title/chapter/track directly.
- ㉕ **PROG**
 - Program tracks/titles/chapters/picture files.
 - Program radio stations.
- ㉖ **MUTE**
 - Mute or restore volume.
- ㉗ **DBB**
 - Turns on or off dynamic bass enhancement.

3 Connect

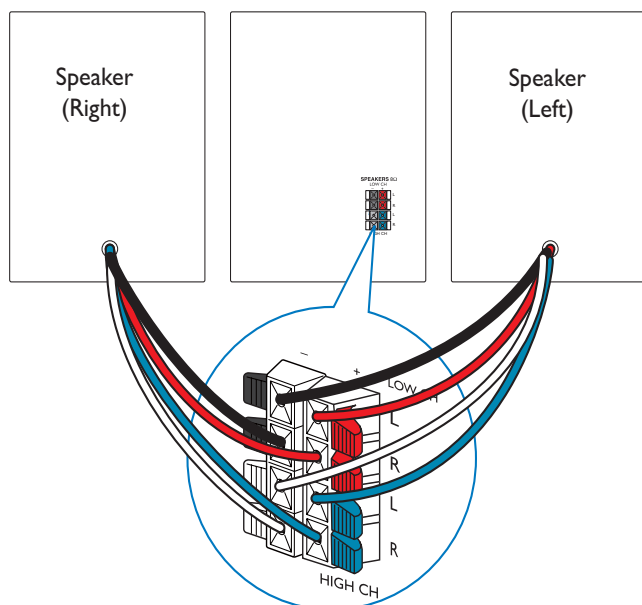
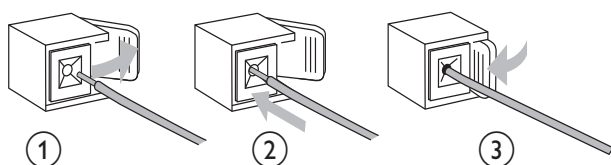
Connect speakers



Note

- Ensure that the colors of the speaker wires and terminals are matched.

- 1 Hold down the socket flap.
- 2 Insert the stripped part of the wire completely.
 - Insert the right speaker wires to “**HIGH CH R/LOW CH R**”, left speaker wires to “**HIGH CH L/LOW CH L**”.
 - Insert the red/blue wires to “**+**”, black/grey wires to “**-**”.
- 3 Release the socket flap.



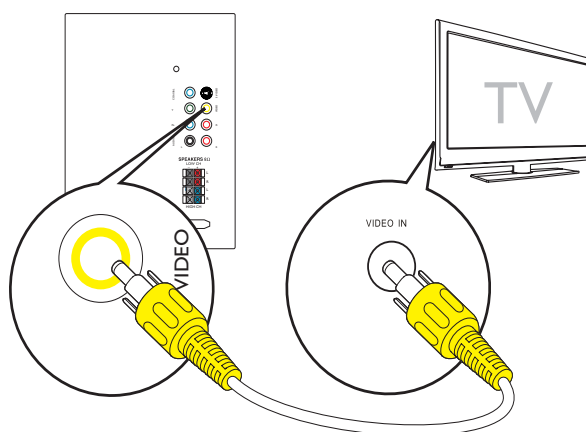
Connect TV (video)

- Option 1: Connect through composite video socket (for a standard TV).
- Option 2: Connect through S-Video socket (for a standard TV).
- Option 3: Connect through component video sockets (for a standard TV or Progressive Scan TV).

You must connect this unit directly to a TV.

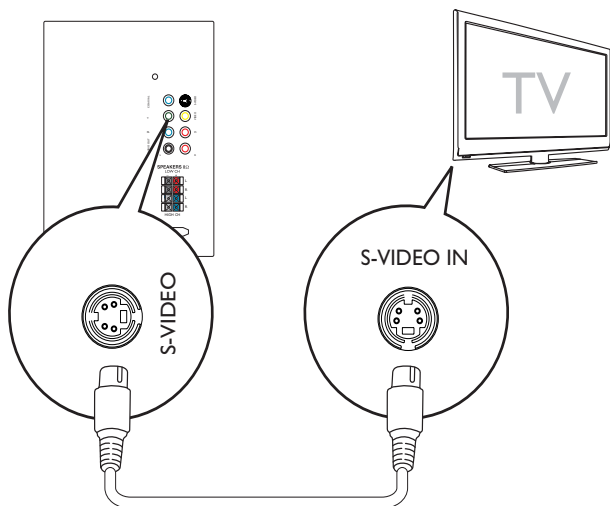
Option 1: Connect through composite video socket

- 1 Connect the supplied composite video cable to:
 - the **VIDEO** socket on this unit.
 - the video input socket on the TV.



Option 2: Connect through S-Video socket

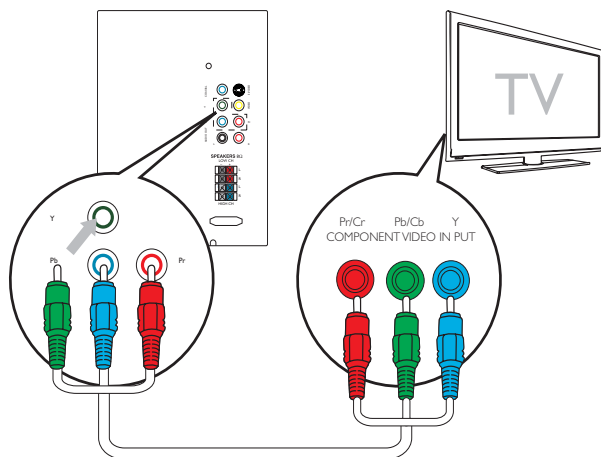
- 1 Connect an S-video cable (not supplied) to:
 - the **S-VIDEO** socket on this unit.
 - the S-Video socket on the TV.



Option 3: Connect through component video sockets

Connect a progressive scan TV through component video for higher quality video.

- 1 Connect component video cables (red/blue/green - not supplied) to:
 - the **VIDEO OUT (Pr Pb Y)** sockets on this unit.
 - the component input sockets on the TV.



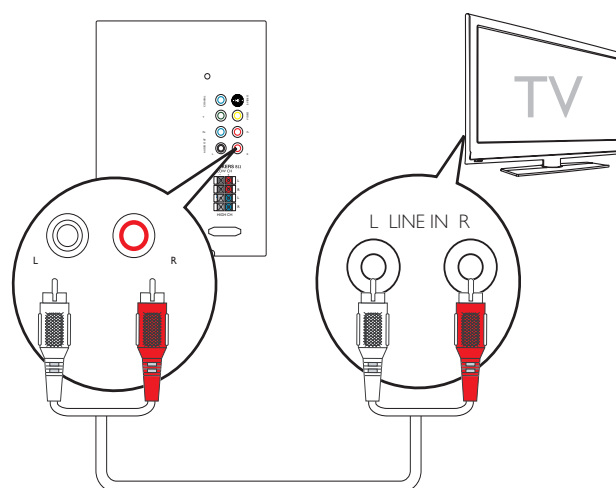
Note

- If your TV does not support progressive scan, you cannot view the picture.
- For how to activate progressive scan on your TV, refer to the TV user manual.

Connect an external audio system (optional)

You can connect this unit to an external audio system to listen to the sound.

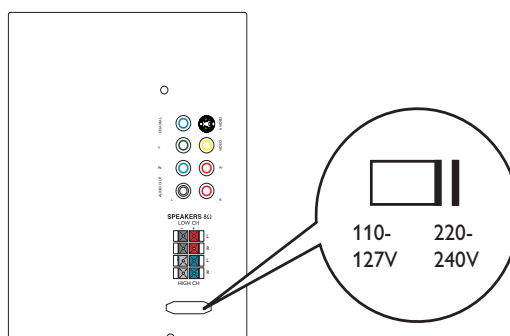
- 1 connect audio cables (red/white) to:
 - the **AUDIO OUT L/R** sockets on this unit.
 - the audio input sockets on the external audio system.



Caution

- Risk of product damage! Ensure that the power supply voltage corresponds to the voltage printed on the back or the underside of the unit.
- Before connecting the AC power cord, ensure you have completed all other connections.

- 1 Switch the voltage selector to the local power line voltage.



4 Get started



Caution

- Use of controls or adjustments or performance of procedures other than herein may result in hazardous radiation exposure or other unsafe operation.

Always follow the instructions in this chapter in sequence.

If you contact Philips, you will be asked for the model and serial number of this apparatus. The model number and serial number are on the back of the apparatus. Write the numbers here:

Model No. _____

Serial No. _____

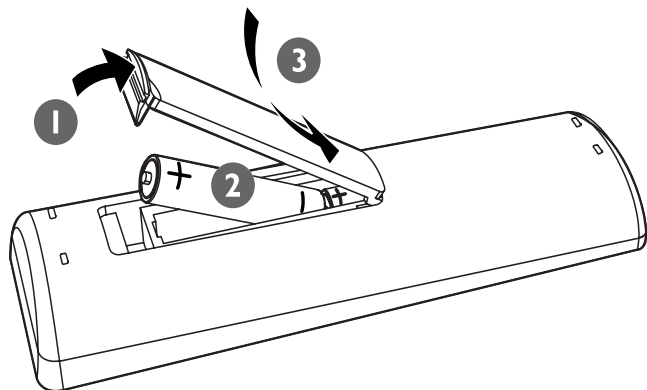
Install remote control batteries



Caution

- Risk of explosion! Keep batteries away from heat, sunshine or fire. Never discard batteries in fire.
- Risk of decreased battery life! Never mix different brands or types of batteries.
- Risk of product damage! When the remote control is not used for long periods, remove the batteries.

- 1 Open the battery compartment.
- 2 Insert 2 AAA batteries with correct polarity (+/-) as indicated.
- 3 Close the battery compartment.



Set the clock

- 1 In standby mode, press and hold **OSD/DISPLAY** on the remote control.
↳ The hour digits are displayed and begin to blink.
- 2 Press **VOL +/-** on the remote control to set the hours.
- 3 Press **OSD/DISPLAY**.
↳ The minute digits are displayed and begin to blink.
- 4 Press **VOL +/-** to set the minutes.
- 5 Press **OSD/DISPLAY** to confirm the time.



Tip

- During play, you can press and hold **OSD/DISPLAY** for 2 seconds to view the clock.

Turn on

- 1 Press **⏻**.
↳ The unit switches to the last selected source.

Switch to standby

- 1 Press **⏻** to switch the unit to standby mode.
↳ The backlight on the display panel is reduced.
↳ The clock (if set) appears on the display panel.

Select the correct source on TV

- 1 Turn on the apparatus.
- 2 Press **DISC** to select the disc source.

- 3 Turn on the TV and then select the correct video source.
 - ↳ You should see the blue Philips DVD background screen.



Tip

- See the TV user manual for details of how to select the correct video source.

Select the correct TV system

Change this setting if the video does not appear correctly. By default, this setting matches the most common setting for TVs in your country.

- 1 Press **SETUP**.
- 2 Select **[SYSTEM SETUP]>[TV SYSTEM]**, and then press **►**.
- 3 Select an option and then press **OK**.
 - **[NTSC]** - For TV with NTSC color system.
 - **[PAL]** - For TV with PAL color system.
 - **[AUTO]** - For TV with multiple color systems.
- 4 Press **SETUP** to exit.

Change system menu language

- 1 Press **SETUP**.
- 2 Select **[LANGUAGE SETUP]>[MENU LANG]**, and then press **►**.
- 3 Select an option and then press **OK**.
- 4 Press **SETUP** to exit.

5 Play

Play disc



Caution

- Never look at the laser beam inside the unit.
- Risk of product damage! Never play discs with accessories such as disc stabilizer rings or disc treatment sheets.
- Do not push on the disc tray or put any objects other than discs on the disc tray.

- 1 Press **DISC** to select the disc source.
- 2 Press **OPEN/CLOSE** to open the disc compartment.
- 3 Insert a disc with the printed side facing up, then close the disc compartment.
 - ↳ Play starts automatically.
 - If play does not start, select an option from the disc menu, and then press **▶II**.
 - To pause/resume play, press **▶II**.
 - To stop play, press **■**.
 - To skip to a track/file/chapter, press **◀▶**.
 - To search within a track/file/chapter, press and hold **◀◀▶▶**. Press **▶II** to resume normal play.



Note

- To play a locked DVD, enter the 4-digit parental control password.

Use the disc menu

When you load a DVD/(S)VCD disc, a menu may be displayed on the TV screen.

To access or exit the menu manually:

- 1 Press **MENU**.

For VCD with PlayBack Control (PBC) feature (version 2.0 only):

With the PBC feature, you can play VCD interactively according to the menu screen.

- 1 During play, press **MENU** to enable/disable PBC.
 - ↳ When PBC is enabled, the menu screen is displayed.
 - ↳ When PBC is disabled, normal play is resumed.

Select a subtitle language

You can select a subtitle language on DVDs or DivX® discs.

- During play, press **SUBTITLE**.



Tip

- For some DVDs, the language can only be changed from the disc menu. Press **MENU** to access the menu.

Select a subtitle language

You can select a subtitle language on DVDs or DivX® discs.

- During play, press **SUBTITLE**.



Tip

- For some DVDs, the language can only be changed from the disc menu. Press **MENU** to access the menu.

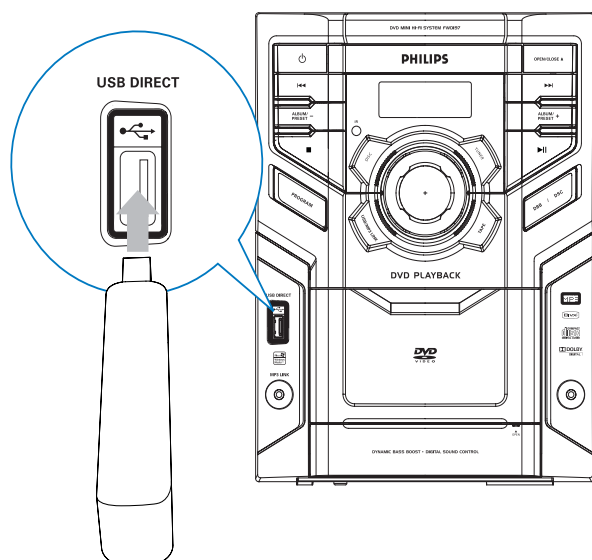
Play from USB



Note

- Ensure that the USB device contains playable audio content.

- 1 Connect the USB device into the socket.



- 2 Press **USB** to select the USB source.
 ↳ Play starts automatically.
 - To pause/resume play, press **▶II**.
 - To stop play, press **■**.
 - To skip to a track/file, press **◀/▶**.
 - To search within a track/file, press and hold **◀◀/▶▶**. Press **▶II** to resume normal play.

Play DivX video

You can play DivX files copied onto a CD-R/ RW, recordable DVD or USB device.

Note

- This unit does not support DivX 6.0 or above.

- 1 Insert a disc or connect a USB device.
- 2 Select a source:
 - For discs, press **DISC**.
 - For USB devices, press **USB**.
- 3 Select a file to play and press **OK**.
 - To stop play, press **■**.
 - To pause or resume play, press **▶II**.
 - To change a subtitle language, press **SUBTITLE**.

Note

- Subtitle files with the following filename extensions (.srt, .smi, .sub, .ssa, .ass) are supported but do not appear on the file navigation menu.
- The subtitle filename has to be the same as the file name of the video.

Play MP3/WMA/picture files

You can play MP3/WMA/picture files copied onto a disc or USB device.

- 1 Insert a disc or connect a USB device.
- 2 Select a source:
 - For discs, press **DISC**.
 - For USB devices, press **USB**.
 - The disc menu is displayed on the TV screen.
- 3 Press **◀/▶** to select the folder/file column.
- 4 Press **▲/▼** to select a folder/file, then press **OK** to confirm.
 - To stop play, press **■**.
 - To pause or resume play, press **▶II**.
 - To skip to the previous/next file, press **◀/▶**.

Play control

Repeat play

You can select various repeat functions during play. The repeat play options vary depending on the disc type.

- 1 Press **MODE** repeatedly to choose a play mode.
 - For DVD
 - **[CHAPTER]**: repeat the current chapter
 - **[TITLE]**: repeat the current title
 - **[REP ALL]**: repeat the disc
 - **[OFF]**: switch off the repeat mode
 - For VCD/MP3/CD/DivX
 - **[REP 1]**: repeat the current track

- **[REP DIR]** (for MP3 disc only): repeat the current folder
- **[REP ALL]**: repeat the disc
- **[OFF]**: switch off the repeat mode

1 To return to normal play, press **MODE** repeatedly until play mode is no longer displayed.

Repeat A-B (DVD/VCD/CD/MP3/WMA)

- 1** During music or video play, press **REPEAT A-B** at the start point.
- 2** Press **REPEAT A-B** at the end point.
 - ↳ The section starts to play repeatedly.
 - ↳ To cancel repeat play, press **REPEAT A-B** again.



Note

- The section A and B can be set only within the same chapter/track.

Search by time or chapter/track number

- 1** During play, press **GOTO** until a time field or chapter/track field is displayed.
 - For the time field, enter the play position in hours, minutes and seconds.
 - For the chapter/track field, enter the chapter/track.
 - Play starts automatically at your selected point.

Play options

Display play information

- 1** During play, press **OSD/DISPLAY** repeatedly to select different play information.

Program



Note

- You can program a maximum of 16 tracks/titles/JPEG picture files.

You can program favourite tracks/titles/JPEG picture files for play in specified order.

- 1** In stop mode, press **PROG** to enter program mode.
- 2** Select in the menu and then enter track/album, title/chapter, or picture file number.
- 3** When the program is complete, press **▶||** to start play.
 - To change a program, repeat the steps above.
 - To clear the program, press **■** twice.

Change camera angle

Some DVDs contain alternate scenes, such as scenes recorded from different camera angles. For such DVDs, you can select from the available alternate scenes.

- 1** During play, press **ANGLE** repeatedly to switch between camera angles.

Change the audio channel



Note

- This feature is only available for VCD/DivX play.

- 1** During play, press **AUDIO** repeatedly to select an audio channel available on the disc:
 - MONO L
 - MONO R
 - MIX MONO
 - STEREO

Zoom in/out image

- 1 During video/picture play, press **ZOOM** repeatedly to zoom in/out the image.
 - When the image is zoomed in, you can press ▲/▼/◀/▶ to pan through the image.

Picture view options

Select a slide show play mode

- 1 During play, press **PROG** repeatedly to select a slide-show play mode.

Rotate picture

- 1 During play, press ▲/▼/◀/▶ to rotate the picture.

6 Adjust settings

System setup

Select TV system

Select the color system that matches the connected TV.

- 1 Press **SETUP**.
- 2 Select **[SYSTEM SETUP]>[TV SYSTEM]**, and then press **►**.
- 3 Select an option and then press **OK**.
 - **[NTSC]**
For TV with NTSC color system.
 - **[PAL]**
For TV with PAL color system.
 - **[AUTO]**
For TV with multiple color systems.
- 4 Press **SETUP** to exit.

Set screen saver

The screen saver protects the TV screen damage due to prolonged exposure to a static image.

- 1 Press **SETUP**.
↳ The system setup menu is displayed.
- 2 Select **[SYSTEM SETUP]>[SCREEN SAVER]**, and then press **►**.
- 3 Select an option and then press **OK**.
 - **[ON]**
Enable the screen saver.
 - **[OFF]**
Disable the screen saver.
- 4 Press **SETUP** to exit.

Select video signal

You can select video signal output to a display or TV.

- 1 Press **SETUP**.

- 2 Select **[SYSTEM SETUP]>[VIDEO]**, and then press **►**.
- 3 Select an option and then press **OK**.
 - **[INTERLACE-YUV]**
If the composite video connection is used, select this option.
 - **[P-SCAN YPBPR]**
If the component video connection is used, select this option.
 - **[S-VIDEO]**
If the S-Video connection is used, select this option.
- 4 Press **SETUP** to exit.

Select TV type

The TV format determines the aspect ratio of display according to the type of TV you have connected.

- 1 Press **SETUP**.
- 2 Select **[SYSTEM SETUP]>[TV TYPE]**, and then press **►**.
- 3 Select an option, and then press **OK**.
 - **[4:3PS]**
For 4:3 screen TV: full-height display with the trimmed sides.
 - **[4:3LB]**
For 4:3 screen TV: wide-screen display with black bars on the top and bottom of the screen.
 - **[16:9]**

For wide-screen TV: display ratio 16:9.

Change parental control password

You can set a password to restrict play of certain discs.

- 1 Press **SETUP**.
- 2 Select **[SYSTEM SETUP]>[PASSWORD]**, and then press **►**.
- 3 Enter the four-digit password with **Numeric keypad 0-9** and then press **OK**.
 - To change the password, enter a new password, and then press **OK**.
- 4 Press **SETUP** to exit.



Note

- The default password (0000) remains valid even if a new password is set.

Restrict DVD play

Some DVDs may have a parental level assigned to the complete disc or to certain scenes on the disc. You can set a playback permission level for the scenes with this setting.



Note

- VCD, SVCD, and CD have no level indication, so parental control function has no effect on those kind of discs. Some DVDs are not encoded with a rating though the movie rating may be printed on the Disc cover. The rating level features does not work for such discs.

- 1 Press **SETUP**.
- 2 Select **[SYSTEM SETUP]>[RATING]**, and then press **►**.
- 3 Select an option and then press **OK**.
 - ↳ DVDs that are rated above the level you selected does not play unless you enter your four-digit password and choose a higher level rating.
 - ↳ **[1 G]**
Suitable for children.
 - ↳ **[2]**
Recommended as acceptable for viewers of all ages.
 - ↳ **[3 PG]**
Parental guidance suggested.
 - ↳ **[4 PG13]**
Unsuitable for children under age 13.
 - ↳ **[5]**
Parental Guidance; recommended that parents restrict children under 17 from viewing.

- ↳ **[6 R]**
Restricted; recommended only when supervised by a parent or adult guardian.
- ↳ **[7 NC-17]**
Not recommended for children under age 17.
- ↳ **[8]**
Viewed only by adults due to graphic sexual scenes, violence, or language.

- 4 Press **SETUP** to exit.

Restore default settings

You can reset all options and your personal settings to factory default settings.

- 1 Press **SETUP**.
- 2 Select **[SYSTEM SETUP]>[DEFAULT]**, and then press **►**.
- 3 Select **[RESTORE]** and press **OK**.
- 4 Press **SETUP** to exit.

Language setup

Select OSD language

- 1 Press **SETUP**.
- 2 Select **[LANGUAGE SETUP]>[OSD LANGUAGE]**, and then press **►**.
- 3 Select an option and then press **OK**.
- 4 Press **SETUP** to exit.

Change system menu language

- 1 Press **SETUP**.
- 2 Select **[LANGUAGE SETUP]>[MENU LANG]**, and then press **►**.
- 3 Select an option and then press **OK**.
- 4 Press **SETUP** to exit.

View DivX VOD registration code

DivX is a popular media technology created by DivX, Inc. DivX media files contain highly compressed video with high visual quality that maintains a relatively small file size. DivX files can also include advanced media features like menus, subtitles, and alternate audio tracks. Many DivX media files are available for download online, and you can rent and purchase DivX videos with the DivX VOD (Video on Demand) service. To use this service, you need the DivX VOD registration code of the unit. For more information and instructions, visit www.divx.com/vod.

- 1 Press **SETUP**.
- 2 Select **[LANGUAGE SETUP]>[DIVX[R] VOD]**, and then press **►**.
 - ↳ The registration code appears.
- 3 Write down the code for future use.
- 4 Press **SETUP** to exit.



Note

- All the downloaded videos from DivX® VOD can only be played on this unit.

Audio setup

Select digital output

Select a suitable setting if you have connected an audio/video device to the COAXIAL (DIGITAL AUDIO) socket on the unit.

- 1 Press **SETUP**.
- 2 Select **[AUDIO SETUP]>[AUDIO OUT]**, and then press **►**.
- 3 Select an option and then press **OK**.
 - **[SPDIF/OFF]**
Select this option to turn off digital output.

- **[SPDIF/RAW]**
Select this option if the connected device is a multi-channel decoder/receiver.
- **[SPDIF/PCM]**
Select this option if the connected device cannot decode multi-channel audio.

- 4 Press **SETUP** to exit.

Select audio downmix

Select a suitable audio downmix when you play a DVD recorded in Dolby Digital format.

- 1 Press **SETUP**.
- 2 Select **[AUDIO SETUP]>[DOWNMIX]**, and then press **►**.
- 3 Select an option and then press **OK**.
 - **[LT/RT]**
Select this if the unit is connected to a Dolby Pro Logic decoder.
 - **[STEREO]**
Select this when output delivers sound from only the two front speakers.
- 4 Press **SETUP** to exit.

Set OP mode

- 1 Press **SETUP**.
- 2 Select **[AUDIO SETUP]>[OP MODE]**, and then press **►**.
- 3 Select an option and then press **OK**.
- 4 Press **SETUP** to exit.

Set dynamic range

- 1 Press **SETUP**.
- 2 Select **[AUDIO SETUP]>[DYNAMIC RANGE]**, and then press **►**.
- 3 Select an option and then press **OK**.
- 4 Press **SETUP** to exit.

7 Listen to the radio

Tune to a radio station



Tip

- For optimal FM reception, fully extend and adjust the position of the FM antenna.
- For optimal MW reception, adjust the position of the main unit.

- 1 Press **TUNER** to select the tuner source.
- 2 Press **TUNER** to select FM or MW.
- 3 Press and hold **◀▶** for more than 2 seconds.
 - ↳ The radio tunes to a station with strong reception automatically.
- 4 Repeat step 3 to tune to more stations.
 - To tune to a weak station, press **◀▶** repeatedly until you find optimal reception.

Program radio stations automatically



Note

- You can program a maximum of 40 preset radio stations (20 FM radio stations and 20 MW radio stations).

- 1 In tuner mode, press and hold **PROG** for 2 seconds to activate automatic program mode.
 - ↳ [AUTO] (auto) is displayed and begins to blink.
 - ↳ All available stations are programmed in the order of waveband reception strength.

- ↳ The first programmed radio station is broadcast automatically.

Program radio stations manually



Note

- You can program a maximum of 40 preset radio stations (20 FM radio stations and 20 MW radio stations).

- 1 Tune to a radio station.
- 2 Press **PROG** to activate program mode.
 - ↳ [PROG] (program) blinks on the display.
- 3 Press **◀▶** to allocate a number (1 to 20) to this radio station, then press **PROG** to confirm.
 - ↳ The preset number and the frequency of the preset station are displayed.
- 4 Repeat the above steps to program other stations.



Note

- To overwrite a programmed station, store another station in its place.

Select a preset radio station

- 1 In tuner mode, press **◀▶** to select a preset number.

8 Play tape

- 1 Press **TAPE** on the main unit to select the tape source.
- 2 Pull **OPEN** on the front panel to open the tape button cover.
- 3 Press **■▲** to open the tape door.
- 4 Load the tape with the open side downward and the full spool to the left.
- 5 Press **▶** to start play.
 - To pause/resume play, press **⏸**.
 - To fast rewind/forward the tape, press **◀◀/▶▶**.
 - To stop play, press **■▲**.



Note

- When you play or record a tape, the sound source cannot be changed.

9 Adjust sound

Adjust volume

- 1 During play, press **VOL +/-** to increase/decrease the volume.

Boost sound power

MAX SOUND gives an instant boost to the sound power.

- 1 Press **MAX** to turn on or off the sound power boost.
↳ If MAX sound is activated, MAX is displayed.

Mute sound

- 1 During play, press **MUTE** to mute/unmute sound.

Select a preset sound effect

- 1 During play, press **SOUND** repeatedly to select:
 - [OPTIMAL] (optimal)
 - [JAZZ] (jazz)
 - [TECHNO] (techno)
 - [ROCK] (rock)

Enhance bass

- 1 During play, press **DBB** to turn on or off dynamic bass enhancement.
↳ If DBB is activated, DBB is displayed.

10 Other features

Listen to an external device

You can also listen to an external audio device through this audio system.

- 1 Press **MP3 LINK** on the remote control to select the MP3 link source.
- 2 Connect the supplied MP3 link cable to:
 - the **MP3 LINK** socket on this unit.
 - the headphone socket on an MP3 player.
- 3 Start to play the MP3 player. (See the user manual of the MP3 player)

Record from disc

- 1 Press **DISC** to select the disc source.
- 2 Place a disc on the tray with the printed side facing up and close the disc tray.
- 3 Press **■▲** to open the tape compartment.
- 4 Insert a blank tape and close the tape compartment.
- 5 To record from a specific track, press **◀** / **▶** to select the track.
- 6 To record tracks in a specific sequence, program the tracks (see “**Play options**” > “**Program**”).
- 7 Press **●** to start to record.
 - To pause, press **⏸**. To resume, press **⏸** again.
 - To stop, press **■▲**.

Record from radio

- 1 Tune to a radio station.
- 2 Press **■▲** to open the tape door.
- 3 Insert a blank tape and close the tape compartment.

- 4 Press **●** to start to record.
 - To pause, press **⏸**. To resume, press **⏸** again.
 - To stop, press **■▲**.

Record from external source

- 1 Press **USB** or **MP3 LINK** to select an external source.
- 2 Connect the external device.
- 3 Play the selected source.
- 4 Insert a blank tape and close the tape compartment.
- 5 Press **●** to start to record.
 - To pause, press **⏸**. To resume, press **⏸** again.
 - To stop, press **■▲**.

Set the sleep timer

This unit can switch to standby automatically after a set period of time.

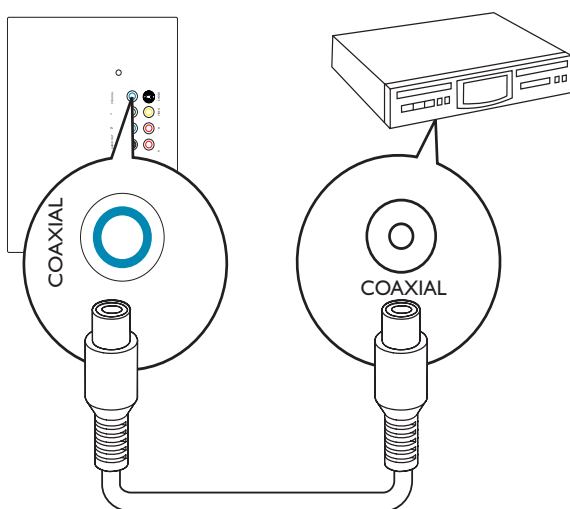
- 1 When the unit is turned on, press **SLEEP** repeatedly to select a set period of time (in minutes).
 - ➔ When sleep timer is activated, the display shows **zzZ**.

To deactivate sleep timer

- 1 Press **SLEEP** repeatedly until “**SLP 00**” is displayed.
 - ➔ When sleep timer is deactivated, **zzZ** disappears on the display.


Record to a digital recorder

- 1 Connect a coaxial cable (not supplied) to:
 - the **COAXIAL** socket on this unit.
 - the digital input socket on the digital recorder.



- 2 Play the audio to be recorded.
- 3 Start to record on the digital recorder (see the user manual of the digital recorder).

Listen through headphone

- 1 Plug a headphone into the  socket on the unit.

11 Product information



Note

- Product information is subject to change without prior notice.

Specifications

Amplifier

Rated Output Power	4X25W RMS
Frequency Response	63 - 16000 Hz, ± 3 dB
Signal to Noise Ratio	>62dB

Disc

Laser Type	Semiconductor
Disc Diameter	12cm/8cm
Video Decoding	MPEG-2/MPEG-1
Video DAC	10 Bits
Signal System	PAL/NTSC
Video Format	4:3/16:9
Video S/N	56 dB (minimum)
Composite Video Output	1.0 Vp-p, 75 ohm
S-Video output	Y- 1.0 Vp-p, 75 ohm C- 0.286 Vp-p, 75 ohm
Audio DAC	24Bits / 96 kHz
Total Harmonic Distortion	<1%
Frequency Response	4 Hz - 20 kHz (44.1kHz) 4 Hz - 22 kHz (48 kHz) 4 Hz - 44 kHz (96 kHz)
Digital Output	SPDIF (Sony Philips digital interface) coaxial
Total harmonic distortion	< 0.1% (1 kHz)
Channel separation	40 dB minimum (1 kHz)
S/N Ratio	>65dBA

Tuner

FM

Tuning Range	87.5 - 108 MHz
Tuning grid	50 KHz
Sensitivity	
- Mono, 26dB S/N Ratio	<22 dBu
- Stereo, 46dB S/N Ratio	<45 dBu
Search Selectivity	<28 dBu
Total Harmonic Distortion	<3%
Signal to Noise Ratio	>45 dB

MW

Tuning Range	531 - 1602 kHz
--------------	----------------

Tape deck

Frequency Response	63-8000Hz
- Normal tape (type I)	(8dB)
S/N Ratio	
- Normal tape (type I)	35dBA
Wow and flutter	<=0.4%
	DIN

Speakers

Speaker Impedance	8 ohm
Speaker Driver	4"woofer
Sensitivity	>82 dB/m/W

General information

AC power	110-127V/220 - 240V, 50/60 Hz
Operation power consumption	60W
Standby power consumption	<14W
USB direct	Version 2.0/1.1
Dimensions	
- Main Unit (W x H x D)	220 x 292 x 285 mm
- Speaker Box (W x H x D)	207 x 292 x 186 mm
Weight	
- With Packing	11.2 kg
- Main Unit	3.8 kg
- Speaker Box	2 x 2.8 kg

Supported disc formats

- Digital Video Discs (DVDs)
- Video CDs (VCDs)
- Super Video CDs (SVCDs)
- Digital Video Discs + Rewritable (DVD+RW)
- Compact Discs (CDs)
- Picture (Kodak, JPEG) files on CDR(W)
- DivX(R) disc on CD-R(W):
- DivX 3.11, 4.x and 5.x
- WMA

Supported MP3-CD formats:

- ISO 9660
- Max. title/album name: 12 characters
- Max. title number plus album: 255.
- Max. nested directory: 8 levels.
- Max. album number: 511.
- Max. MP3 track number: 999.
- Supported sampling frequencies for MP3 disc: 32 kHz, 44.1 kHz, 48 kHz.
- Supported Bit-rates of MP3 disc are: 32, 64, 96, 128, 192, 256 (kbps).

These formats are not supported:

- Files like *.VMA, *.AAC, *.DLF, *.M3U,
- *.PLS, *.WAV
- Non-English Album/Title name
- Discs recorded in Joliet format
- MP3 Pro

USB playability information

Compatible USB devices:

- USB flash memory (USB 2.0 or USB1.1)
- USB flash players (USB 2.0 or USB1.1)
- memory cards (requires an additional card reader to work with this unit)

Supported formats:

- USB or memory file format FAT12, FAT16, FAT32 (sector size: 512 bytes)

- MP3 bit rate (data rate): 32-320 Kbps and variable bit rate
- WMA v9 or earlier
- Directory nesting up to a maximum of 8 levels
- Number of albums/ folders: maximum 99
- Number of tracks/titles: maximum 999
- ID3 tag v2.0 or later
- File name in Unicode UTF8 (maximum length: 128 bytes)

Unsupported formats:

- Empty albums: an empty album is an album that does not contain MP3/ WMA files, and is not be shown in the display.
- Unsupported file formats are skipped. For example, Word documents (.doc) or MP3 files with extension .dlf are ignored and not played.
- AAC, WAV, PCM audio files
- DRM protected WMA files (.wav, .m4a, .m4p, .mp4, .aac)
- WMA files in Lossless format

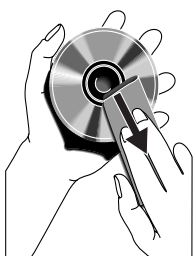
Maintenance

Clean the cabinet

- Use a soft cloth slightly moistened with a mild detergent solution. Do not use a solution containing alcohol, spirits, ammonia or abrasives.

Clean discs

- When a disc becomes dirty, clean it with a cleaning cloth. Wipe the disc from the centre out.



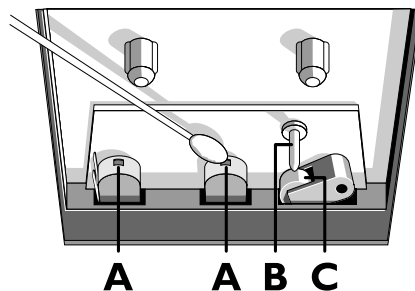
- Do not use solvents such as benzene, thinner, commercially available cleaners, or antistatic spray intended for analogue records.

Clean the disc lens

- After prolonged use, dirt or dust may accumulate at the disc lens. To ensure good play quality, clean the disc lens with Philips CD lens cleaner or any commercially available cleaner. Follow the instructions supplied with cleaner.

Clean the heads and the tape paths

- To ensure good recording and play quality, clean the heads **A**, the capstan(s) **B**, and pressure roller(s) **C** after every 50 hours of tape operation.
- Use a cotton swab slightly moistened with cleaning fluid or alcohol.



- You can also clean the heads by playing a cleaning tape once.

Demagnetise the heads

- Use a demagnetising tape available at your dealer.

12 Troubleshooting



Warning

- Never remove the casing of this apparatus.

To keep the warranty valid, never try to repair the system yourself.

If you encounter problems when using this apparatus, check the following points before requesting service. If the problem remains unsolved, go to the Philips web site www.philips.com/welcome. When you contact Philips, ensure that the apparatus is nearby and the model number and serial number are available.

No power

- Ensure that the AC power plug of the unit is connected properly.
- Ensure that there is power at the AC outlet.
- To save power, the system switches off automatically 15 minutes after track play reaches the end and no control is operated.

No sound or poor sound

- Adjust the volume.
- Check that the speakers are connected correctly.
- Check if the stripped speaker wires are clamped.

Left and right sound outputs reversed

Check the speaker connections and location.

No response from the unit

- Disconnect and reconnect the AC power plug, then turn on the system again.
- As a power-saving feature, the unit switches off automatically 15 minutes after track play reaches the end and no control is operated.

Remote control does not work

- Before you press any function button, first select the correct source with the remote control instead of the main unit.
- Reduce the distance between the remote control and the unit.

- Insert the battery with its polarities (+/– signs) aligned as indicated.
- Replace the battery.
- Aim the remote control directly at the sensor on the front of the unit.

No disc detected

- Insert a disc.
- Check if the disc is inserted upside down.
- Wait until the moisture condensation at the lens has cleared.
- Replace or clean the disc.
- Use a finalized CD or correct format disc.

No picture

- Check the video connection.
- Turn on the TV to the correct Video-In channel.
- Progressive scan is activated but the TV does not support progressive scan.

Black and white or distorted picture

- The disc does not match the TV color system standard (PAL/NTSC).
- Sometimes a slight picture distortion may appear. This is not a malfunction.
- Clean the disc.
- A distorted picture may appear during progressive scan setup.

The aspect ratio of the TV screen cannot be changed even though you have set the TV display format.

- The aspect ratio is fixed on the loaded DVD disc.
- The aspect ratio may not be changed for some TV systems.

Audio or subtitle languages cannot be set

- The disc is not recorded with sound or subtitles in multiple languages.
- The audio or subtitle language setting is prohibited on the disc.

The DVD player does not respond when buttons are pressed.

- Disconnect the power plug from the jack, and insert again.

Poor radio reception

- Increase the distance between the unit and your TV or VCR.
- Fully extend the FM antenna.
- Connect an outdoor FM antenna instead.

Timer does not work

- Set the clock correctly.
- Switch on the timer.

Clock/timer setting erased

- Power has been interrupted or the power plug has been disconnected.
- Reset the clock/timer.

Cannot display some files in USB device

- The number of folders or files in the USB device has exceeded a certain limit. This phenomenon is not a malfunction.
- The formats of these files are not supported.

USB device not supported

- The USB device is incompatible with the unit. Try another one.

13 Glossary

A

Analog audio

Sound that has not been turned into numbers. Analog sound is available when you use the AUDIO LEFT/RIGHT. These red and white jacks send audio through two channels, the left and right.

Aspect ratio

Aspect ratio refers to the length to height ratio of TV screens. The ratio of a standard TV is 4:3, while the ratio of a high-definition or wide TV is 16:9. The letter box allows you to enjoy a picture with a wider perspective on a standard 4:3 screen.

AUDIO OUT sockets

Red and white sockets that send audio to another system (TV, Stereo, etc).

B

Bit rate

Bit rate is the number of bits that are conveyed or processed per unit of time. The bit rate is usually measured in some multiple of bits per second (kilobits per second: kbps). The term bit rate is a synonym for data transfer rate (or simply data rate).

C

Chapter

Chapter
Sections of a picture or a music piece on a DVD that are smaller than titles. A title is composed of several chapters. Each chapter is assigned a chapter number that enables you to locate a specific chapter.

D

Digital Audio

Digital Audio is a sound signal that has been converted into numerical values. Digital sound can be transmitted through multiple channels. Analog sound can only be transmitted through two channels.

Disc menu

A screen display that allows election of images, sounds, subtitles, multi-angles, etc., recorded on a DVD.

DivX®

The DivX® codec is a patent-pending, MPEG-4 based video compression technology developed by DivX®, Inc. It can shrink the file size of digital video and still maintain the high visual quality.

Dolby Digital

A surround sound system developed by Dolby Laboratories that contains up to six channels of digital audio (front left and right, surround left and right, center and subwoofer.)

J

JPEG

A very common digital still picture format. A still-picture data compression system proposed by the Joint Photographic Expert Group, which features small decrease in image quality in spite of its high compression ratio. Files are recognized by their file extension 'jpg' or 'jpeg.'

M

MP3

A file format with a sound data compression system. MP3 is the abbreviation of Motion Picture Experts Group 1 (or MPEG-1) Audio Layer 3. With the MP3 format, one CD-R or CD-RW can contain about 10 times more data than a regular CD.

Multichannel

Usually DVD is specified to have each sound track constitute one sound field. Multichannel refers to a structure of sound tracks having three or more channels.

P

Parental control

A function of the DVD to limit playback of the disc by the age of the users according to the limitation level in each country. The limitation varies from disc to disc; when it is activated, playback will be prohibited if the software's level is higher than the user-set level.

PBC

Playback Control. A system where you navigate through a Video CD/Super VCD with on-screen menus that are recorded onto the disc. You can enjoy interactive playback and search.

PCM

Pulse Code Modulation. A digital audio encoding system.

R

Region code

A system that allows discs to be played only in the region designated. This unit only plays discs that have compatible region codes. You can find the region code of your unit on the product label. Some discs are compatible with more than one region (or ALL regions.)

S

S-Video

An analog video connection. It is capable of transmitting clear picture quality by sending separate signals for luminance and colour to the connected device. You can use S-Video only if your TV has an S-Video In socket.

Surround

A system that creates realistic, three-dimensional sound fields. It is usually achieved with multiple speakers that are arranged around the listener.

T

Title

On commercial DVDs, this is the longest section of a movie or music feature on DVD. Each title is assigned a title number, so that you can locate the title you want. When you record programs, they are stored as titles. Depending on the recording settings, recorded titles may automatically contain several chapters.

V

VIDEO OUT socket

Yellow socket that sends the DVD picture video to a TV.

