



# Short User Manual



Manufactured under license from Dolby Laboratories. Dolby and the double-D symbol are trademarks of Dolby Laboratories.



**ABOUT DIVX VIDEO:** DivX® is a digital video format created by DivX, Inc, a subsidiary of Rovi Corporation. This is an official DivX Certified® device that plays DivX video. Visit [divx.com](http://divx.com) for more information and software tools to convert your files into DivX videos.

**ABOUT DIVX VIDEO-ON-DEMAND:** This DivX Certified® device must be registered in order to play purchased DivX Video-on-Demand (VOD) movies. To obtain your registration code, locate the DivX VOD section in your device setup menu. Go to [vod.divx.com](http://vod.divx.com) for more information on how to complete your registration.

## Warranty

- Never attempt to repair the product, this could lead to the risk of injury, damage to the product and will void your warranty.
- Use the product and accessories only as intended by the manufacturer. The caution sign printed on the back of the product indicates risk of electric shock.
- Never remove the cover of the product. Always contact Philips Customer Support for service or repairs.
- Any operation expressly prohibited in this manual, or any adjustments and assembly procedures not recommended or authorized in this manual shall void the warranty.



Specifications are subject to change without notice  
© 2013 Koninklijke Philips Electronics N.V.  
All rights reserved.

PD9010\_05\_SUM\_V1.0  
wk1309.4



# Safety and Warranty

Before using your set:  
Check out the following details

## Safety and notice

Read and understand all instructions before you use this product. If damage is caused by failure to follow the instructions, the warranty does not apply.

## Safety

Only use attachments/accessories specified by the manufacturer. Use only power supplies listed in the user manual. The product shall not be exposed to dripping or splashing. Do not place any sources of danger on the product (e.g. liquid filled objects, lighted candles). Batteries (battery pack or batteries installed) shall not be exposed to excessive heat such as sunshine, fire or the like. Danger of explosion if battery is incorrectly replaced. Replace only with the same or equivalent type.

Modification of the product could result in hazardous radiation of EMC or other unsafe operation.

### Warning

- Never remove the casing of this product.
- Never lubricate any part of this product.
- Never place this product on other electrical equipment.
- Keep this product away from direct sunlight, naked flames or heat.
- Never look into the laser beam inside this product.
- Ensure that you always have easy access to the power cord, plug or adaptor to disconnect the product from the power.

## Hearing safety

A pleine puissance, l'écoute prolongée du baladeur peut endommager l'oreille de l'utilisateur.



### Warning

- To prevent possible hearing damage, do not listen at high volume levels for long periods.

The maximum output voltage of the player is not greater than 150 mV.

## Compliance

This product complies with the radio interference requirements of the European Community.



This apparatus includes this label:



### Note

- The type plate is located on the bottom of the product.

## Care of the environment

Your product is designed and manufactured with high quality materials and components, which can be recycled and reused.



When this crossed-out wheeled bin symbol is attached to a product it means that the product is covered by the European Directive 2002/96/EC.

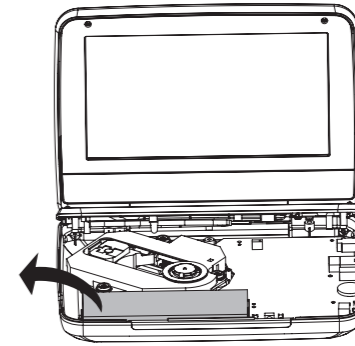
Please inform yourself about the local separate collection system for electrical and electronic products. Please act according to your local rules and do not dispose of your old products with your normal household waste. Correct disposal of your old product helps to prevent potential negative consequences for the environment and human health.



Your product contains batteries covered by the European Directive 2006/66/EC, which cannot be disposed with normal household waste. Please inform yourself about the local rules on separate collection of batteries because correct disposal helps to prevent negative consequences for the environmental and human health.

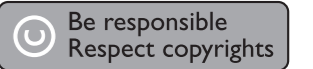


Always bring your product to a professional to remove the built-in battery.

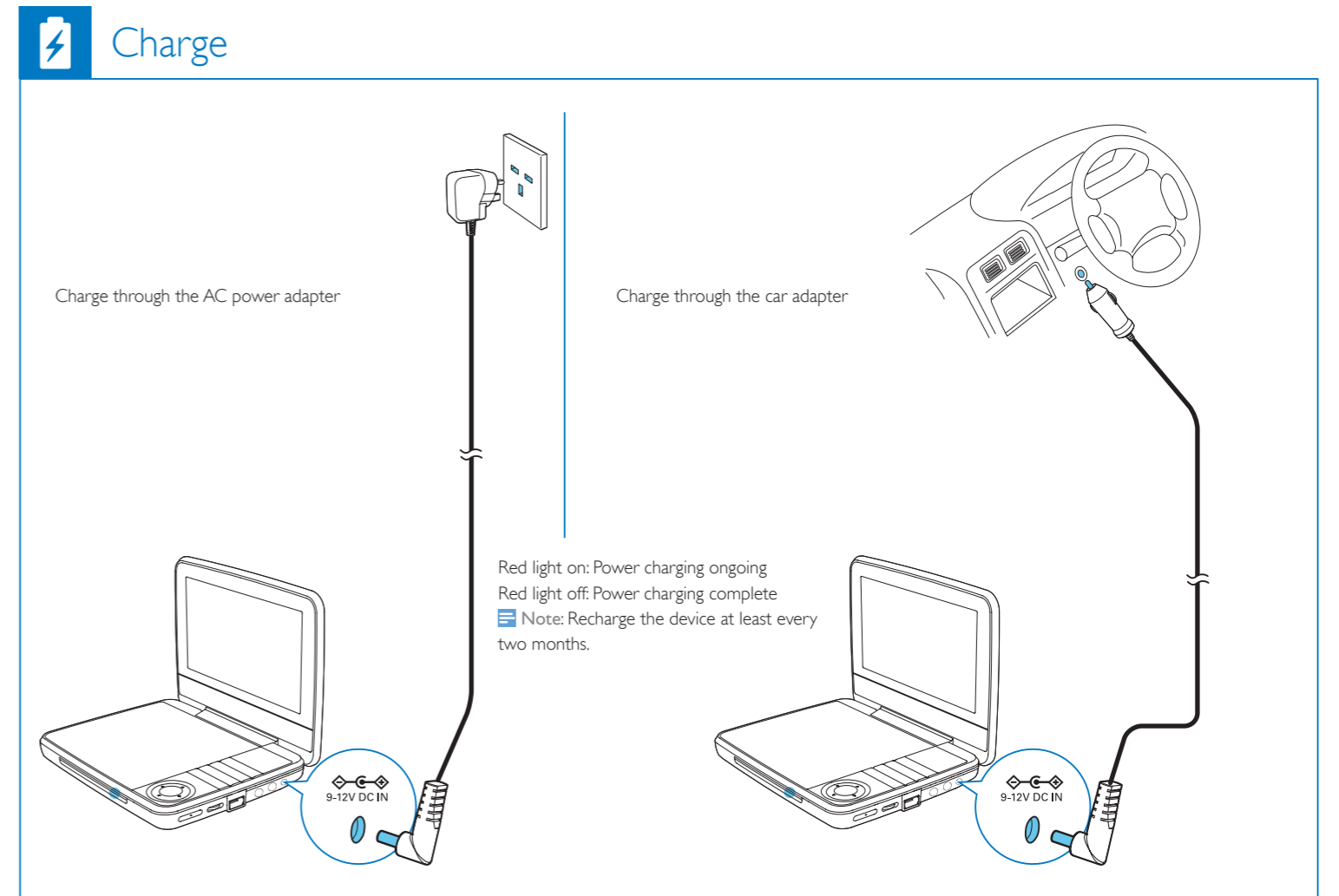
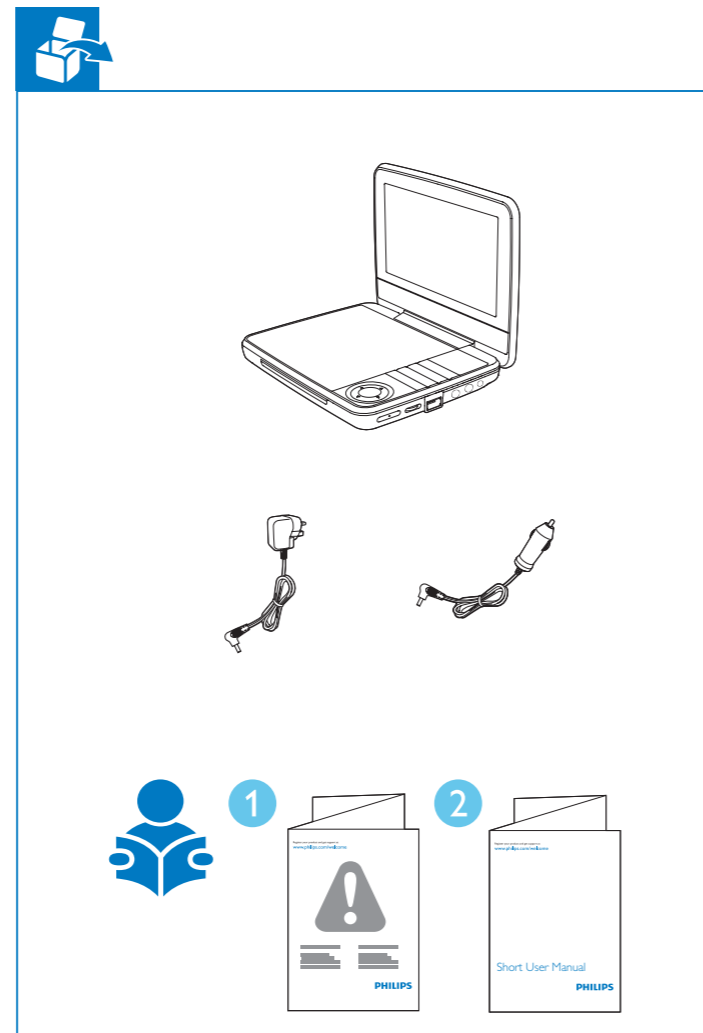


## Copyright

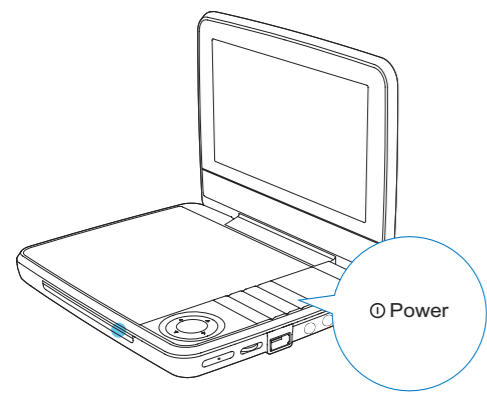
This item incorporates copy protection technology that is protected by U.S. patents and other intellectual property rights of Rovi Corporation. Reverse engineering and disassembly are prohibited.



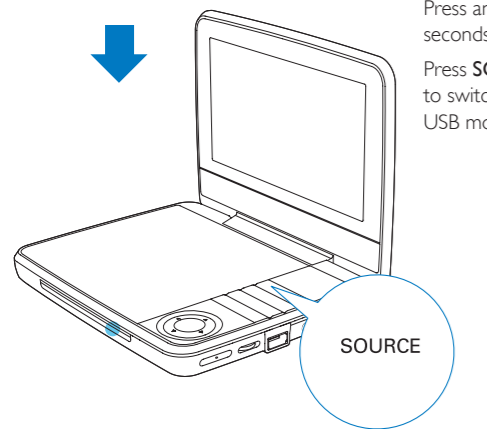
Specifications are subject to change without notice. Trademarks are the property of Koninklijke Philips Electronics N.V or their respective owners. Philips reserves the right to change products at any time without being obliged to adjust earlier supplies accordingly.



## Switch on/off

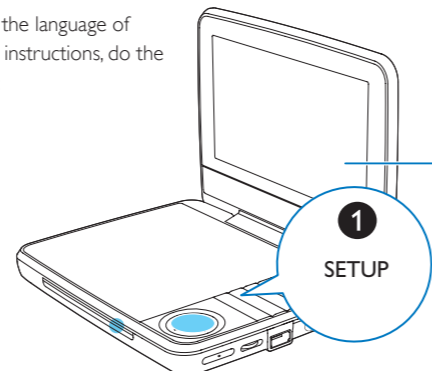


Press **Power** to switch on.  
Press and hold **Power** for two seconds to switch off.  
Press **SOURCE** repeatedly to switch to the DVD or USB mode.

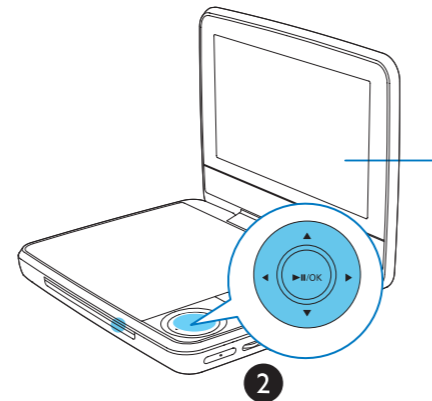
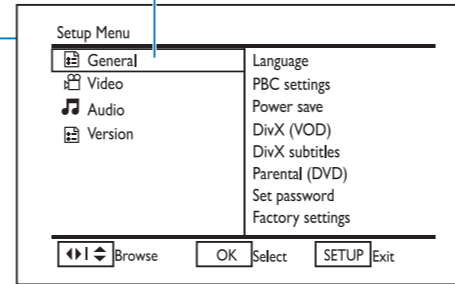


## Select languages

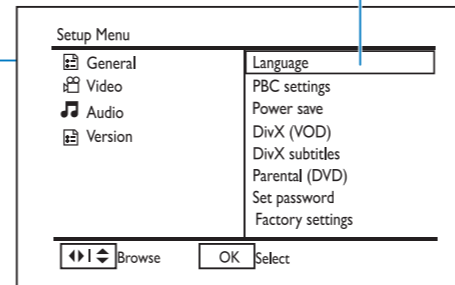
To select the language of onscreen instructions, do the following:



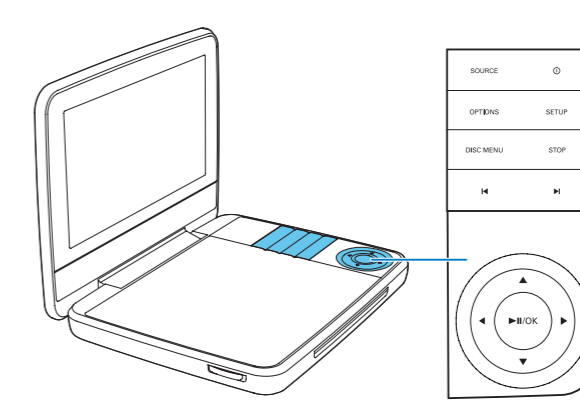
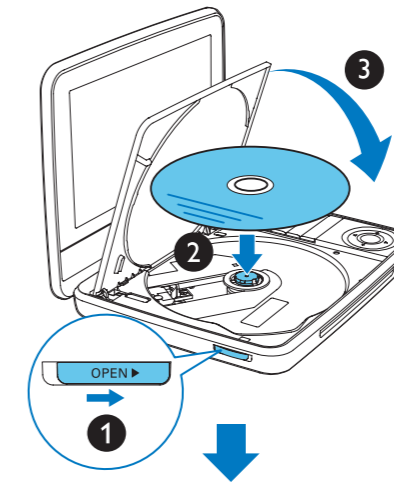
### General



### Language

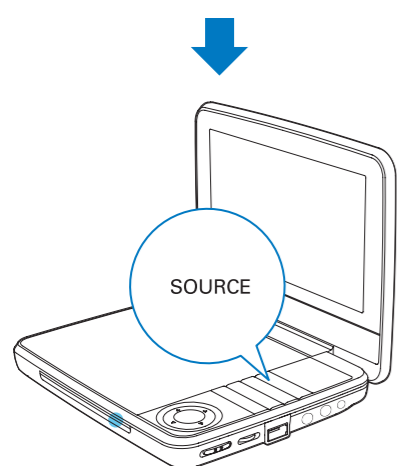
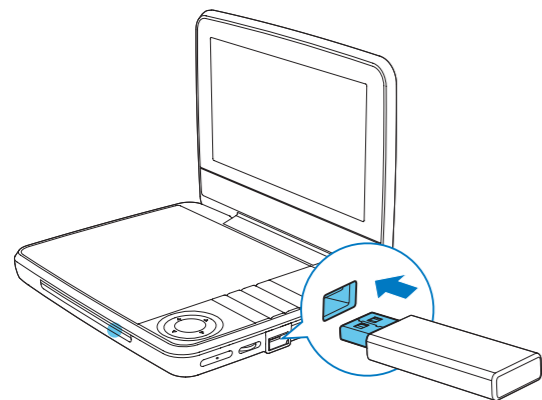


## Disc

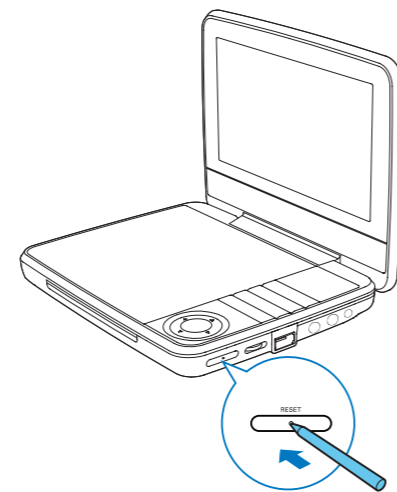


- ▶||/OK:** Start, pause, or resume play.
- ◀|▶:** Skip to the previous or next title, chapter, or track.
- ◀/▶:** Search backward or forward at different speeds.
- STOP:** Stop play.
- OPTIONS:** Access options relating to the current activity or selection.
- SETUP:** Access or exit the setup menu.

## USB

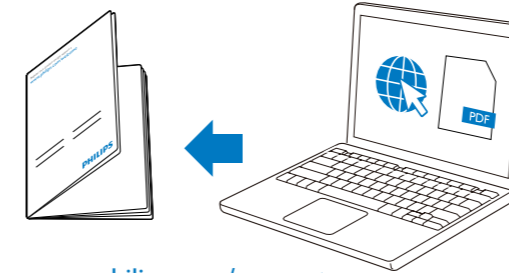


## ?



If the player does not respond to key pressing, press **RESET** with a ball-point pen or similar tool to switch off the player, and then press **Power** to restart.

## Support



[www.philips.com/support](http://www.philips.com/support)

Visit [www.philips.com/support](http://www.philips.com/support) to download the user manual and find troubleshooting tips.

### Note

- Specifications are subject to change without notice.

### Main unit

- AC Power adaptor: AY5808/05 or DSA-9PFB-09 FEU090100
- Power supply
  - Input: 100-240V~, 50Hz/ 60Hz
  - Output: DC 9V = 1.0A
- Power consumption: 11.5 W
- Operating temperature range: 0 - 45 °C

### Playable media

- Disc
  - DVD, DVD-Video, VCD/SVCD, Audio CD
  - DVD+R/+RW, DVD-R/-RW, DVD+R/-R DL (Dual Layer)
  - CD-R/CD-RW, MP3 media, JPEG files

### File format

- Video: .avi, .divx, .mp4, .xvid
- Audio: .mp3
- Picture: .jpg, .jpeg

### USB

- Compatibility: Hi-Speed USB (2.0)
- Class support: USB Mass Storage Class (UMS)
- File system: FAT16, FAT32