

Always there to help you

Register your product and get support at
www.philips.com/support



BTM3360



User manual

PHILIPS

Contents

1 Important	2	7 Other features	18
Safety	2	Set the alarm timer	18
Notice	3	Set the sleep timer	18
		Listen to an external device	18
		Charge your devices	19
		Adjust the display brightness	19
2 Your Micro Music System	5		
Introduction	5	8 Product information	20
What's in the box	5	Specifications	20
Overview of the main unit	6	USB playability information	21
Overview of the remote control	7	Supported MP3 disc formats	21
3 Get started	9	9 Troubleshooting	22
Connect speakers	9		
Connect FM antenna	9		
Connect power	9		
Prepare the remote control	10		
Demonstrate the features	10		
Power on	10		
Set the clock	10		
Select a source	11		
4 Play	12		
Play from disc	12		
Play from USB	12		
Control play	12		
Skip tracks	12		
Program tracks	12		
Play from Bluetooth-enabled devices	13		
5 Listen to the radio	15		
Tune to a radio station	15		
Program radio stations automatically	15		
Program radio stations manually	15		
Select a preset radio station	15		
Display RDS information	15		
6 Adjust sound	17		
Select a preset sound effect	17		
Adjust volume level	17		
Mute sound	17		

1 Important

Safety

Read and understand all instructions before you use this micro music system. If damage is caused by failure to follow the instructions, the warranty does not apply.



This 'bolt of lightning' indicates uninsulated material within the device may cause an electrical shock. For the safety of everyone in your household, please do not remove the covering.

The 'exclamation mark' calls attention to features for which you should read the enclosed literature closely to prevent operating and maintenance problems.

WARNING: To reduce the risk of fire or electric shock, the device should not be exposed to rain or moisture and objects filled with liquids, such as vases, should not be placed on the device.

CAUTION: To prevent electric shock, fully insert the plug. (For regions with polarized plugs: To prevent electric shock, match wide blade to wide slot.)

Warning

- Never remove the casing of this apparatus.
 - Never lubricate any part of this apparatus.
 - Never look into the laser beam inside this apparatus.
 - Never place this apparatus on other electrical equipment.
 - Keep this apparatus away from direct sunlight, naked flames or heat.
 - Ensure that you always have easy access to the power cord, plug or adaptor to disconnect the apparatus from the power.
-
- The device shall not be exposed to dripping or splashing.
 - Do not place any source of danger on the device (e.g. liquid filled objects, lit candles).
 - Where the MAINS plug or an appliance coupler is used as the disconnect device, the disconnect device shall remain readily operable.
 - Make sure that there is enough free space around the product for ventilation.
 - Battery usage **CAUTION** – To prevent battery leakage which may result in bodily injury, property damage, or damage to the unit:
 - Install all batteries correctly, + and - as marked on the unit.
 - Batteries (packed or installed) shall not be exposed to excessive heat such as sunshine, fire or the like.
 - Remove batteries when the unit is not used for a long time.
 - Only use attachments/accessories specified by the manufacturer.

Hearing safety

A pleine puissance, l'écoute prolongée du baladeur peut endommager l'oreille de l'utilisateur.



Warning

- To prevent possible hearing damage, do not listen at high volume levels for long periods.

The maximum output voltage of headphone is not greater than 150 mV.

Listen at a moderate volume.

- Using headphones at a high volume can impair your hearing. This product can produce sounds in decibel ranges that may cause hearing loss for a normal person, even for exposure less than a minute. The higher decibel ranges are offered for those that may have already experienced some hearing loss.
- Sound can be deceiving. Over time your hearing 'comfort level' adapts to higher volumes of sound. So after prolonged listening, what sounds 'normal' can actually be loud and harmful to your hearing. To guard against this, set your volume to a safe level before your hearing adapts and leave it there.

To establish a safe volume level:

- Set your volume control at a low setting.
- Slowly increase the sound until you can hear it comfortably and clearly, without distortion.

Listen for reasonable periods of time:

- Prolonged exposure to sound, even at normally 'safe' levels, can also cause hearing loss.
- Be sure to use your equipment reasonably and take appropriate breaks.

Be sure to observe the following guidelines when using your headphones.

- Listen at reasonable volumes for reasonable periods of time.
- Be careful not to adjust the volume as your hearing adapts.
- Do not turn up the volume so high that you can't hear what's around you.
- You should use caution or temporarily discontinue use in potentially hazardous situations. Do not use headphones while operating a motorized vehicle, cycling,

skateboarding, etc.; it may create a traffic hazard and is illegal in many areas.

Notice

Any changes or modifications made to this device that are not expressly approved by Gibson Innovations may void the user's authority to operate the equipment.

Compliance

CE 0890

Hereby, Gibson Innovations declares that this product is in compliance with the essential requirements and other relevant provisions of Directive 1999/5/EC. You can find the Declaration of Conformity on www.philips.com/support.

This apparatus includes this label:



Care of the environment

Disposal of your old product and battery



Your product is designed and manufactured with high quality materials and components, which can be recycled and reused.



This symbol on a product means that the product is covered by European Directive 2012/19/EU.



This symbol means that the product contains batteries covered by European Directive 2013/56/EU which cannot be disposed of with normal household waste.

Inform yourself about the local separate collection system for electrical and electronic products and batteries. Follow local rules and never dispose of the product and batteries with normal household waste. Correct disposal of old products and batteries helps prevent negative consequences for the environment and human health.

Removing the disposable batteries

To remove the disposable batteries, see battery installation section.

Environmental information

All unnecessary packaging has been omitted. We have tried to make the packaging easy to separate into three materials: cardboard (box), polystyrene foam (buffer) and polyethylene (bags, protective foam sheet.)

Your system consists of materials which can be recycled and reused if disassembled by a specialized company. Please observe the local regulations regarding the disposal of packaging materials, exhausted batteries and old equipment.

Bluetooth

The Bluetooth® word mark and logos are registered trademarks owned by Bluetooth SIG, Inc. and any use of such marks by Gibson is under license. Other trademarks and trade names are those of their respective owners.



Be responsible Respect copyrights

The making of unauthorized copies of copy-protected material, including computer programs, files, broadcasts and sound recordings, may be an infringement of copyrights and constitute a criminal offence. This equipment should not be used for such purposes.

Care for your product

- Do not insert any objects other than discs into the disc compartment.
- Do not insert warped or cracked discs into the disc compartment.
- Remove the discs from the disc compartment if you are not using the product for an extended period of time.
- Only use microfiber cloth to clean the product.



Note

- The type plate is located on the back of the product.

2 Your Micro Music System

Congratulations on your purchase, and welcome to Philips! To fully benefit from the support that Philips offers, register your product at www.philips.com/welcome.

Introduction

With this unit, you can:

- enjoy audio from discs, USB devices, Bluetooth devices, and other external devices;
- listen to radio stations.

You can enrich sound output with below sound effect:

- Digital Sound Control (DSC)

The unit supports these media formats:

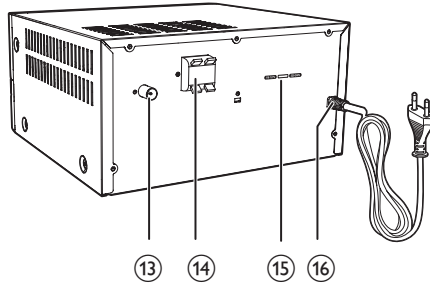
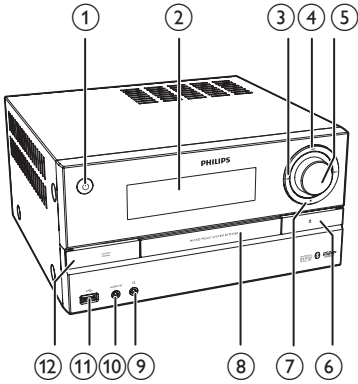


What's in the box

Check and identify the contents of your package:

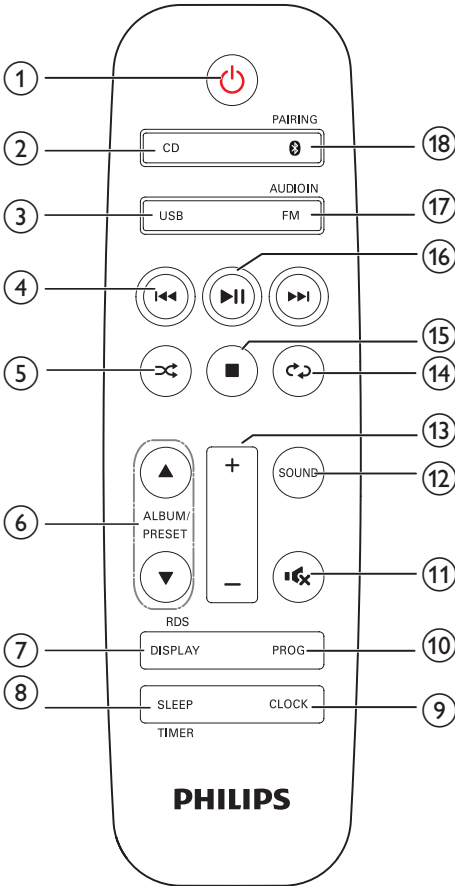
- Main unit
- Remote control (with one AAA battery)
- 2 x Speakers with cables
- 1 x FM wire antenna
- Short user manual
- Safety and notice


Overview of the main unit









- ① Turn on the product.
• Switch to standby mode or ECO power standby mode.
- ② **Display panel**
• Show current status.
- ③ Skip to previous/next track.
• Search within a track/disc.
• Tune to a radio station.
• Adjust time.
- ④ Start or pause play.
- ⑤ **VOLUME knob**
• Adjust volume.
- ⑥ Open or close the disc compartment.
- ⑦ Stop play.
• Erase a program.
- ⑧ **Disc compartment**
- ⑨ Headphone socket.
- ⑩ **AUDIO IN**
• Connect external audio devices.
- ⑪ Connect USB storage devices.
- ⑫ **SOURCE/PAIRING**
• Press to select a source: DISC, USB, TUNER, AUDIO IN, Bluetooth.
• In Bluetooth mode, press and hold for three seconds until you hear a beep sound to enter pairing mode and connect a second device.
- ⑬ **ANTENNA socket**
• Connect with the FM antenna.
- ⑭ **SPEAKER OUT socket**
• Connect with the speakers.
- ⑮ **Voltage selector (for service purpose only)**
- ⑯ **AC MAINS ~**

Overview of the remote control



- ①  Turn the product on or off.
 • Switch to standby mode or ECO power standby mode.
- ② **CD**
 • Select CD source.
- ③ **USB**
 • Select USB source.

- ④  Skip to the previous/next track.
 • Search within a track/disc/USB.
 • Tune to a radio station.
 • Adjust time.
- ⑤  Play tracks randomly.
- ⑥ **ALBUM/PRESET ▲ / ▼**
 • Select a preset radio station.
 • Skip to previous/next album.
- ⑦ **DISPLAY/RDS**
 • Adjust display brightness.
 • During playback, display the play information.
 • For selected FM radio stations, display RDS information (if available).
- ⑧ **SLEEP/TIMER**
 • Set sleep timer.
 • Set alarm timer.
- ⑨ **CLOCK**
 • Set the clock.
 • View clock information.
- ⑩ **PROG**
 • Program tracks.
 • Program radio stations.
 • Auto store FM radio stations.
- ⑪  Mute or restore volume.
- ⑫ **SOUND**
 • Enrich sound effect with Digital Sound Control (DSC).
- ⑬ **VOL +/-**
 • Adjust volume.
- ⑭  Play a track or all tracks repeatedly.
- ⑮  Stop play or erase a program.
- ⑯  Press to start, pause, or resume play.

⑰ **FM/AUDIO IN**

- Select FM source.
- Select AUDIO IN source.

⑱ **🔗 /PAIRING**

- Select Bluetooth source.
- Press and hold for three seconds until you hear a beep sound to enter pairing mode.

3 Get started

! Caution

- Use of controls or adjustments or performance of procedures other than herein may result in hazardous laser exposure or other unsafe operation.

Always follow the instructions in this chapter in sequence.

Connect speakers

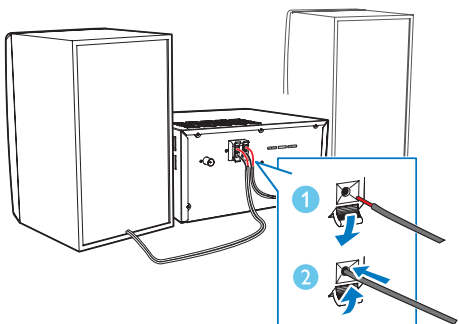
≡ Note

- Insert the stripped portion of each speaker wire into the socket completely.
- For better sound quality, use the supplied speakers only.

- 1 For the right speaker, find the sockets on the back of the main unit marked "R".
- 2 Insert the red wire into the red (+) socket, and the black wire into the black (-) socket.
- 3 For the left speaker, find the sockets on the main unit marked "L".
- 4 Repeat step 2 to insert the left speaker wire.

To insert each speaker wire:

- 1 Hold down the socket flap.
- 2 Insert the speaker wire fully.
- 3 Release the socket flap.

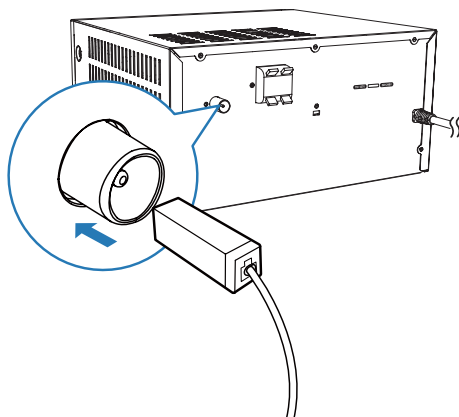


Connect FM antenna

* Tip

- For optimal reception, fully extend and adjust the position of the antenna.
- For better FM stereo reception, connect an outdoor FM antenna to the **FM AERIAL** socket.

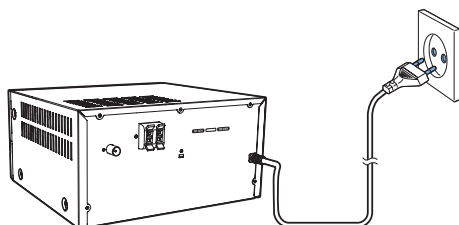
Connect the supplied FM antenna to the **FM AERIAL** socket on back of the product.



Connect power

! Caution

- Risk of product damage! Ensure that the power supply voltage corresponds to the voltage printed on the back or the underside of the unit.
- Before you connect the AC power cord, ensure that you have completed all other connections.



Connect the power cable to the wall socket.

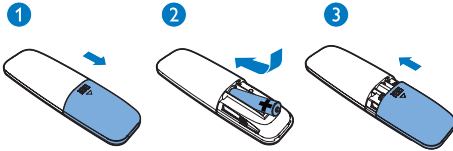
Prepare the remote control

! Caution

- Risk of product damage! When the remote control is not used for long periods, remove the batteries.

To insert the remote control battery:

- 1 Open the battery compartment.
- 2 Insert the supplied AAA battery with correct polarity (+/-) as indicated.
- 3 Close the battery compartment.



Demonstrate the features

In standby mode, press ■ to demonstrate features of this device.

- ↳ The features are displayed one by one across the display panel.
- To turn off the demonstration, press ■ again.

Power on

Press ⏻.

- ↳ The product switches to the last selected source.

Switch to standby mode

Press ⏻ again to switch the product to standby mode.

- ↳ The clock (if set) is displayed on the panel.
- In standby mode, press ⏻ to switch between working mode and standby mode.

≡ Note

- The product switches to standby mode after 15 minutes inactive.

Switch to ECO power standby mode

Press and hold ⏻ for more than two seconds.

- ↳ The red ECO power standby indicator turns on.
- In Eco power standby mode, press ⏻ to switch between working mode and ECO power standby mode.

≡ Note

- The product switches to ECO power standby mode after 15 minutes in standby mode.

Switch between standby mode and ECO powerstandby mode:

- Press and hold ⏻ for more than two seconds.

≡ Note

- If no button is pressed over 15 minutes in standby mode, this product goes to ECO standby mode automatically.

Set the clock

- 1 In standby mode, press and hold **CLOCK** for more than two seconds to enter the clock setting mode.
↳ [24H] or [12H] is displayed.
- 2 Press **◀◀ / ▶▶** to select **24H** or **12H** hour format, and then press **CLOCK**.
↳ The hour digits begin to blink.
- 3 Press **◀◀ / ▶▶** to set the hour, and then press **CLOCK**.
↳ The minute digits begin to blink.
- 4 Press **◀◀ / ▶▶** to set the minute, and then press **CLOCK**.
↳ The set clock is displayed.



Note

- If no button is pressed in 90 seconds during setting, the product exits clock setting without saving earlier operations.
- To view clock information in working mode, press **CLOCK**.

Select a source

On the main music system

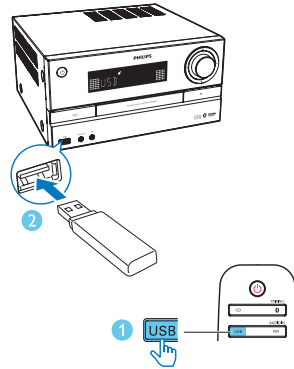
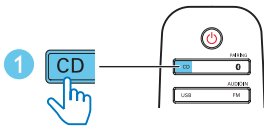
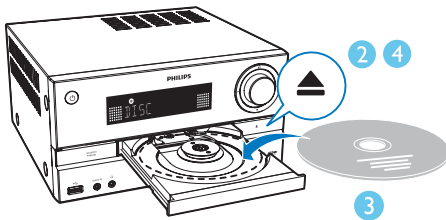
Press **SOURCE** repeatedly to select a source.

- **[DISC]**: starts playing disc if there is disc inserted in the CD compartment.
- **[USB]**: starts playing mp3 files if there is music stored in the connected USB device.
- **[FM]**: start FM broadcasting.
- **[AUDIO IN]**: start playing music if there is other audio product connected to the device via **AUDIO IN** socket.
- **[Bluetooth]**: playing audio on the Bluetooth device when it' connected with this product.

4 Play

Play from disc

- 1 Press **CD** to select CD source.
- 2 Press **▲** to open the disc compartment.
- 3 Insert a disc with the label side up.
- 4 Press **▲** to close the disc compartment.
↳ Play starts automatically. If not, press **▶||**.



Control play

▶ 	Start, pause, or resume play.
■	Stop play.
▲ / ▼	Select an album or a folder.
⏮ / ⏭	Press to skip to the previous or next track. Press and hold to search backward/forward within a track.
↺	Play a track or all tracks repeatedly.
↻	Play tracks randomly (Not applicable for the programmed tracks).

Play from USB

Note

- Make sure that the USB device contains playable audio content, see Chapter **Product Information**.

- 1 Insert a USB device into the **↔** socket.
- 2 Press **USB** to select the USB source.
↳ Play starts automatically. If not, press **▶||**.

Skip tracks

When playing a CD:

Press **⏮ / ⏭** to select tracks.

When playing an MP3 disc and USB:

- 1 Press **▲ / ▼** to select an album or a folder.
- 2 Press **⏮ / ⏭** to select a track or a file.

Program tracks

This function allows you to program 20 tracks in the desired sequence.

- 1 In stop mode, press **PROG** to activate the program mode.
↳ **[PRG]** (program) and **[001 PR 01]** are displayed.
- 2 For MP3 tracks, press **▲** / **▼** to select an album.
- 3 Press **◀◀** / **▶▶** to select a track, and then press **PROG** to confirm.
- 4 Repeat steps 2 to 3 to program more tracks.
- 5 Press **▶||** to play the programmed tracks.
↳ During play, **[PRG]** (program) is displayed.

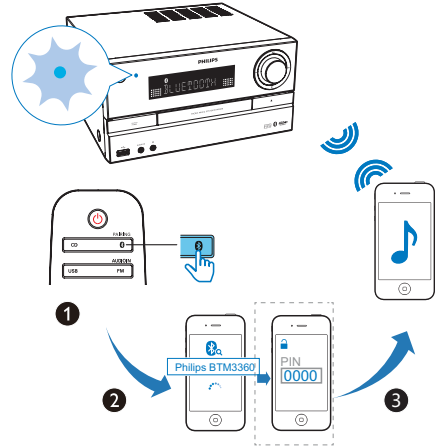
To erase the program

Press **■** twice.

Play from Bluetooth-enabled devices

Note

- The effective operation range between the unit and your Bluetooth enabled device is approximately 10 meters (30 feet).
- Any obstacle between the system and the device can reduce the operational range.
- Compatibility with all Bluetooth devices is not guaranteed.



- 1 Press **BT** to select the **Bluetooth** source.
↳ **[Bluetooth]** (Bluetooth) is displayed.
↳ The Bluetooth indicator flashes blue.
- 2 On your device that supports Advanced Audio Distribution Profile (A2DP), enable Bluetooth and search for Bluetooth devices that can be paired (refer to the user manual of the device).
- 3 Select **'Philips BTM3360'** on your Bluetooth enabled device and if necessary input '0000' as the pairing password.
↳ After successful pairing and connection, the Bluetooth indicator turns solid blue, and the product beeps twice.
- 4 Play audio on the connected device.
↳ Audio streams from your Bluetooth enabled device to this product.
 - If you fail to search for **"Philips BTM3360"** or cannot pair with this product, press and hold **BT** / **PAIRING** for three seconds until the Bluetooth indicator flashes blue quickly to enter pairing mode.

Tip

- The product can memorize up to 8 previously connected Bluetooth devices.

To disconnect the Bluetooth-enabled device:

- Deactivate Bluetooth on your device; or
- Move the device beyond the communication range.

To pair and connect a second device

You can pair and connect a maximum of two Bluetooth-enabled devices to this product actively at the same time.

To connect and play from a second Bluetooth-enabled device

- 1** Press and hold **⏻** / for three seconds to enter pairing mode.
 - ↳ The Bluetooth indicator flash blue quickly.
- 2** Pair and connect a second device to this product.
- 3** Play music from any connected device.
 - To play from the other connected device, stop music streaming from the current device, and then play music from the other device.

To connect and play from a third Bluetooth-enabled device

- 1** Press and hold **⏻** /PAIRING for three seconds to enter pairing mode.
 - ↳ The product beeps twice.
 - ↳ The first connected device is disconnected.
- 2** Pair and connect a third device to this product.
- 3** Play music from any connected device.

5 Listen to the radio

Tune to a radio station



Tip

- Position the antenna as far as possible from TV, VCR, or other radiation source.
- For optimal reception, fully extend and adjust the position of the antenna.

- 1 Press **FM/AUDIO IN** repeatedly to select FM source.
- 2 Press and hold **◀◀ / ▶▶** for more than two seconds.
 - ↳ The radio tunes to a station with strong reception automatically.

- 3 Repeat step 2 to tune to more stations.

To tune to a weak station:

Press **◀◀ / ▶▶** repeatedly until you find optimal reception.

Program radio stations automatically



Note

- You can program a maximum of 20 preset radio stations (FM).

In FM mode, press and hold **PROG** for more than two seconds to activate automatic programming.

- ↳ All available stations are programmed in the order of waveband reception strength.
- ↳ The first programmed radio station is broadcast automatically.

Program radio stations manually

- 1 Tune to a radio station.
- 2 Press **PROG** to activate program mode.
 - ↳ **PRG** (program) displays on the screen.
- 3 Press **▲ / ▼** to allocate a number from 1–20 to this radio station, and then press **PROG** to confirm.
 - ↳ The preset number and the frequency of the preset station are displayed.
- 4 Repeat steps 1–3 to program more stations.



Note

- To overwrite a programmed station, store another station in its place.

Select a preset radio station

In tuner mode, press **▲ / ▼** to select a preset number.

Display RDS information

RDS (Radio Data System) is a service that allows FM stations to transfer additional information. If you tune to an RDS station, an RDS icon is displayed.

- 1 Tune to an RDS station.
- 2 Press **DISPLAY/RDS** repeatedly to scroll through the following information (if available):
 - ↳ Program service
 - ↳ Program type such as **[NEWS]** (news), **[SPORT]** (sport), **[POP M]** (pop music)...
 - ↳ Radio text message
 - ↳ Mono/Stereo
 - ↳ Time

6 Adjust sound

The following operations are applicable to all supported media.

Select a preset sound effect

- Press **SOUND** repeatedly to select a preset sound effect.
 - **Balance**(Balance), **Clear**(Clear), **Powerful**(Powerful), **Warm**(Warm), and **Bright**(Bright).

Adjust volume level

- On the remote control, press **VOL +/-** repeatedly.
- On the main unit, rotate the volume knob.

Mute sound

- Press **MUTE** to mute or unmute the sound.

7 Other features

Set the alarm timer

This product can be used as an alarm clock. You can select DISC, USB, Bluetooth or FM as alarm source.

Note

- Make sure that you have set the clock correctly.
- If the selected alarm source is unavailable, this product switches to FM mode automatically.

- 1 In normal standby mode, press and hold **SLEEP/TIMER** for two seconds.
↳ The hour digits blink.
↳ ☹ is displayed.
- 2 Press **◀◀/▶▶** repeatedly to set the hour, and then press **SLEEP/TIMER** to confirm.
↳ The minute digits blink.
- 3 Press **◀◀/▶▶** to set the minute, and then press **SLEEP/TIMER** to confirm.
↳ The last selected alarm source blinks.
- 4 Press **◀◀/▶▶** to select an alarm source (DISC, USB, Bluetooth or FM), and then press **SLEEP/TIMER** to confirm.
↳ **VOL XX** (XX indicates the volume level of alarm) blinks.
- 5 Press **◀◀/▶▶** to set the alarm volume, and then press **SLEEP/TIMER** to confirm.

Activate/deactivate alarm timer

In standby mode, press **SLEEP/TIMER** repeatedly to activate or deactivate timer.

- ↳ If timer is activated, ☹ is displayed.

Tip

- Alarm timer is not available in AUDIO IN mode.

Note

- If CD/USB source is selected, but no disc is placed or no USB device is connected, the FM source is selected automatically.

Set the sleep timer

This music system can switch to standby automatically after a set period of time.

- When the music system is turned on, press **SLEEP/TIMER** repeatedly to select a set period of time (in minutes).

120 → 90 → 60 → 45 → 30 → 15



- ↳ When sleep timer is activated, **z^z** is displayed.

To deactivate sleep timer

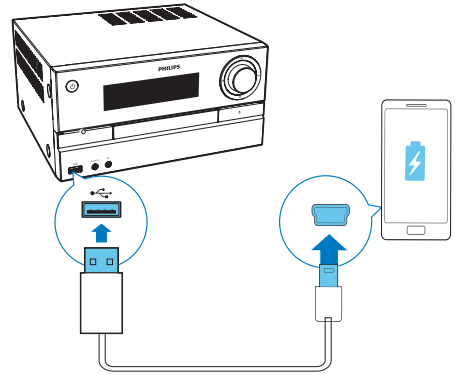
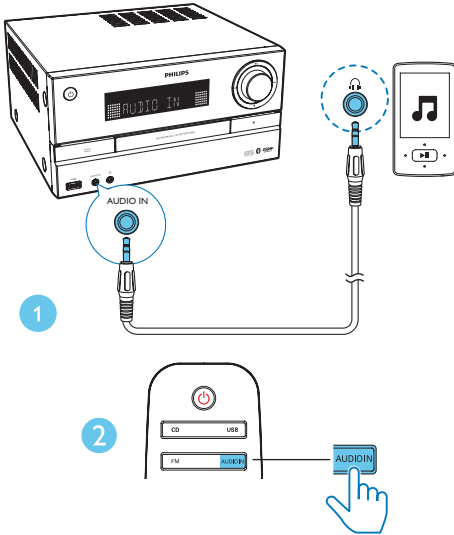
- Press **SLEEP/TIMER** repeatedly until **[OFF]** (sleep off) is displayed.
↳ When sleep timer is deactivated, **z^z** disappears.

Listen to an external device

You can listen to an external device through this product with an audio in cable.

- 1 Connect an audio in cable (not supplied) between:
 - **AUDIO IN** jack (3.5 mm) on the product,
 - and the headphone jack on an external device.

- 2 Press **FM/AUDIO IN** repeatedly to select **AUDIO IN** source.
- 3 Start to play the device (see the device user manual).



- 2 Connect the product to power:
↳ Once the device is recognized, the charging starts.

Note

- Philips does not guarantee the compatibility of this product with all devices.

Charge your devices

With this micro music system, you can charge your external devices, such as your cell phone, MP3 player or other mobile devices.

- 1 Use a USB cable to connect the USB socket of product with the USB socket of your devices.

Adjust the display brightness

Press and hold **DISPLAY/RDS** to access brightness setting mode, then press **DISPLAY/RDS** repeatedly to adjust the display brightness.:

- [DIM 1]
- [DIM 2]
- [DIM OFF]

8 Product information

Note

- Product information is subject to change without prior notice.

Specifications

Amplifier

Total Output Power	Maximum 170W
Frequency Response	40 Hz - 20 kHz; ±3 dB
Signal to Noise Ratio	≥ 75 dBA
Total Harmonic Distortion	< 1%
Aux Input	1 V ± 100 mV RMS 22kohm

Speakers

Speaker Impedance	4 ohm
Speaker Driver	2 × 100mm Woofer, 20mm Tweeter
Sensitivity	83 ± 3dB/m/W

Tuner (FM)

Tuning Range	87.5-108 MHz
Tuning grid	50 KHz
Sensitivity	
- Mono, 26dB S/N Ratio	≤22 dBf
- Stereo, 46dB S/N Ratio	≤48 dBf
Search Selectivity	≤32 dBf
Total Harmonic Distortion	<3%
Signal to Noise Ratio	≥45 dB

USB

USB Direct Version	2.0 Full Speed
Charging support	5V, 500mA

Disc

Laser Type	Semiconductor
Disc Diameter	12 cm/8 cm
Support Disc	CD-DA, CD-R, CD-RW, MP3-CD
Audio DAC	24 Bits/44.1 KHz
Total Harmonic Distortion	<3% (1 KHz)
Frequency Response	20 Hz - 20 kHz (44.1 KHz)
S/N Ratio	≥80 dBA

Bluetooth

Bluetooth Version	V4.0
Bluetooth Frequency Band	2.4 GHz ~ 2.48 GHz ISM Band
Bluetooth Range	10 m (free space)

General information

AC power	110-127V~/220-240 V~, 50/60 Hz
Operation Power Consumption	45 W
Eco Standby Power Consumption	≤0.5 W
Dimensions	
- Main Unit (W × H × D)	249 × 128 × 275 mm
- Speaker Box (W × H × D)	140 × 306 × 215 mm
Weight	
- Main Unit	2.3 kg
- Speaker Box	2.6 kg × 2

USB playability information

Compatible USB devices:

- USB flash memory (USB2.0 or USB1.1)
- USB flash players (USB2.0 or USB1.1)
- memory cards (requires an additional card reader to work with this unit)

Supported USB formats:

- USB or memory file format: FAT12, FAT16, FAT32 (sector size: 512 bytes)
- MP3 bit rate (data rate): 32-320 Kbps and variable bit rate
- Directory nesting up to a maximum of 8 levels
- Number of albums/ folders: maximum 99
- Number of tracks/titles: maximum 999
- File name in Unicode UTF8 (maximum length: 32 bytes)

Unsupported USB formats:

- Empty albums: an empty album is an album that does not contain MP3/WMA files, and will not be shown in the display.
- Unsupported file formats are skipped. For example, word documents (.doc) or MP3 files with extension .dlf are ignored and not played.
- WMA, AAC, WAV, PCM audio files
- DRM protected WMA files (.wav, .m4a, .m4p, .mp4, .aac)
- WMA files in Lossless format

Supported MP3 disc formats

- ISO9660, Joliet
- Maximum title number: 128 (depending on file name length)
- Maximum album number: 99
- Supported sampling frequencies: 32 kHz, 44.1 kHz, 48 kHz
- Supported Bit-rates: 32~256 (kbps), variable bit rates

9 Troubleshooting



Warning

- Never remove the casing of this device.

To keep the warranty valid, never try to repair the system yourself.

If you encounter problems when using this device, check the following points before requesting service. If the problem remains unsolved, go to the Philips Web page (www.philips.com/support). When you contact Philips, make sure that the device is nearby and the model number and serial number are available.

No power

- Make sure that the AC power cord of the device is connected properly.
- Make sure that there is power at the AC outlet.
- As a power-saving feature, the system switches off automatically 15 minutes after track play reaches the end and no control is operated.

No sound or poor sound

- Adjust the volume.
- Check that the speakers are connected correctly.
- Check if the stripped speaker wires are clamped.

No response from the unit

- Disconnect and reconnect the AC power plug, then turn on the unit again.
- As a power-saving feature, the system switches off automatically 15 minutes after track play reaches the end and no control is operated.

Remote control does not work

- Before you press any function button, first select the correct source with the remote control instead of the main unit.
- Reduce the distance between the remote control and the unit.

- Insert the battery with its polarities (+/- signs) aligned as indicated.
- Replace the battery.
- Aim the remote control directly at the sensor on the front of the unit.

No disc detected

- Insert a disc.
- Check if the disc is inserted upside down.
- Wait until the moisture condensation at the lens has cleared.
- Replace or clean the disc.
- Use a finalized CD or correct format disc.

Cannot display some files in USB device

- The number of folders or files in the USB device has exceeded a certain limit. This phenomenon is not a malfunction.
- The formats of these files are not supported.

USB device not supported

- The USB device is incompatible with the unit. Try another one.

Poor radio reception

- Increase the distance between the unit and your TV or other radiation sources.
- Fully extend the FM antenna.

Music playback is unavailable on this unit even after successful Bluetooth connection.

- The device cannot be used to play music through this unit wirelessly.

The audio quality is poor after connection with a Bluetooth-enabled device.

- The Bluetooth reception is poor. Move the device closer to this unit or remove any obstacle between them.

Bluetooth cannot be connected with this unit.

- The device does not support the profiles required for this unit.
- The Bluetooth function of the device is not enabled. Refer to the user manual of the device to find out how to enable the function.
- This unit is not in pairing mode.

- This unit is already connected with another Bluetooth-enabled device. Disconnect that device and then try again.

The paired mobile device connects and disconnects constantly.

- The Bluetooth reception is poor. Move the device closer to this unit or remove any obstacle between them.
- Some mobile phones may connect and disconnect constantly when you make or end calls. This does not indicate any malfunction of this unit.
- For some devices, the Bluetooth connection may be deactivated automatically as a power-saving feature. This does not indicate any malfunction of this unit.

Timer does not work

- Set the clock correctly.
- Switch on the timer.

Clock/timer setting erased

- Power has been interrupted or the power cord has been disconnected.



2016 © Gibson Innovations Limited. All rights reserved.
This product has been manufactured by, and is sold
under the responsibility of Gibson Innovations Ltd., and
Gibson Innovations Ltd. is the warrantor in relation to
this product.

Philips and the Philips Shield Emblem are registered
trademarks of Koninklijke Philips N.V. and are used under
license.

