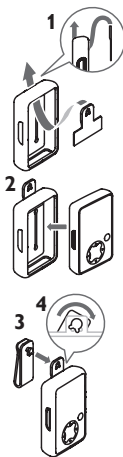


Belt clip

- 1 Hold the T-shaped plastic part and the silicone pouch so that the sloped side of the plastic part faces the open front of the pouch.
Insert the tab of the plastic part into the slot of the pouch as shown.
- 2 Insert the SA30 player into the pouch as shown.
- 3 Hold the belt clip upside down and push the protrusion through the perforation of the tab.
- 4 Turn the belt clip upright to ensure that the pouch is securely fastened.



Armband

- 1 Hold the silicone pouch with the open front facing you.
Extend the armband and hold it with the Velcro side facing you.
- 2 Beginning from the back of the pouch, thread the buckle of the armband through the slots in the pouch as shown.
- 3 Thread the end of the armband through the buckle and secure it by folding it back onto the Velcro. Insert the SA30 player into the pouch as shown.

