

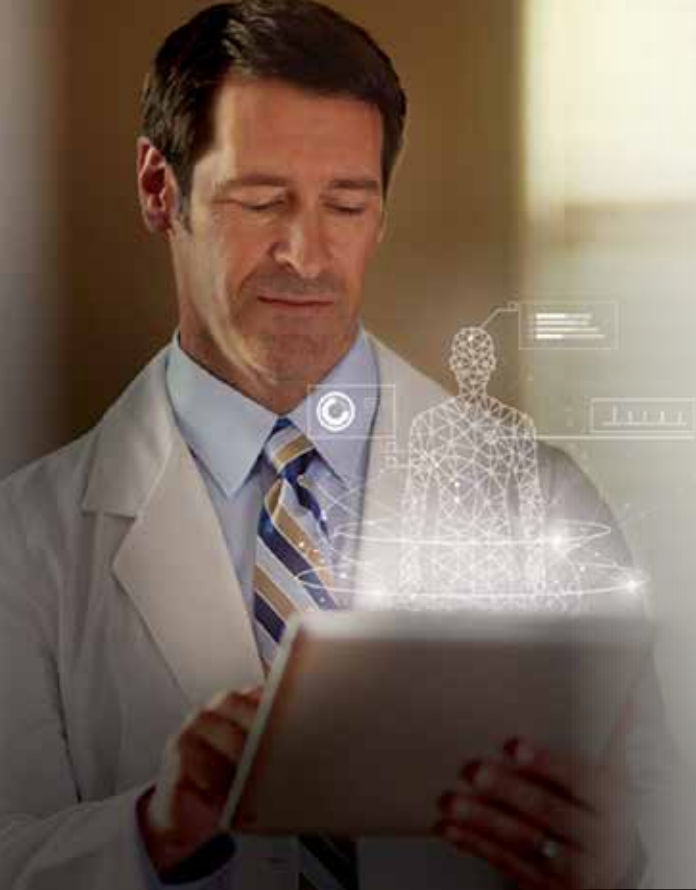


**PHILIPS**

AI Manager

Efficiently leverage AI in  
your daily clinical routine

**Philips AI Manager**

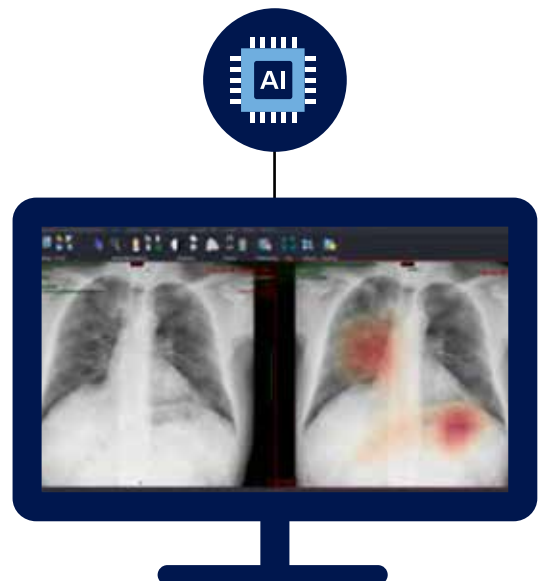


At Philips,  
we believe  
the value of AI  
is only as strong  
as the human  
experience it  
supports.

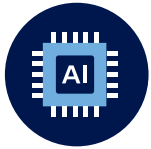
## Empower your radiology department with artificial intelligence (AI)

Rapidly advancing medical technologies are generating more medical data than ever before. Clinicians are challenged every day to take full advantage of the vast amount of data generated across the hospital departments. Artificial intelligence (AI) apps can automatically assist with analyzing medical data and extracting relevant information to generate meaningful – and actionable – insights that help enable precise and personalized patient care.

**Philips AI Manager** is an end-to-end AI enablement solution that integrates with your existing IT infrastructure and PACS solution that enables your radiologists to leverage AI applications for more comprehensive assessment and gain deeper clinical insights.



# Leveraging AI applications for more **comprehensive assessment and deeper clinical insights** in your radiology workflow.



## **One single AI platform**

- AI enablement and clinical application deployment
- Reduced integration effort for all your AI applications
- One advanced vendor agnostic, multimodality platform
- Single access point for all AI generated results
- Fully scalable solution, supporting cloud or on-premises deployment models



## **A trusted partner**

- Flexible business model, via a SaaS offering
- AI application procurement through our partner Blackford Analysis. Philips facilitates the transaction as agent
- The broadest range of AI solutions from 35+ contracted AI vendors
- Support for home-grown AI applications
- Installation, setup and user training for AI Manager
- Maintenance, updates and customer support



## **Deeper clinical insights**

- Effortless generation of all relevant AI results
- Harmonized AI result representation
- Opportunistic screening to detect incidental findings
- Assists with detection<sup>1,2</sup> and faster diagnostic reading<sup>3</sup> of medical imaging
- Precision diagnostics by objective quantification

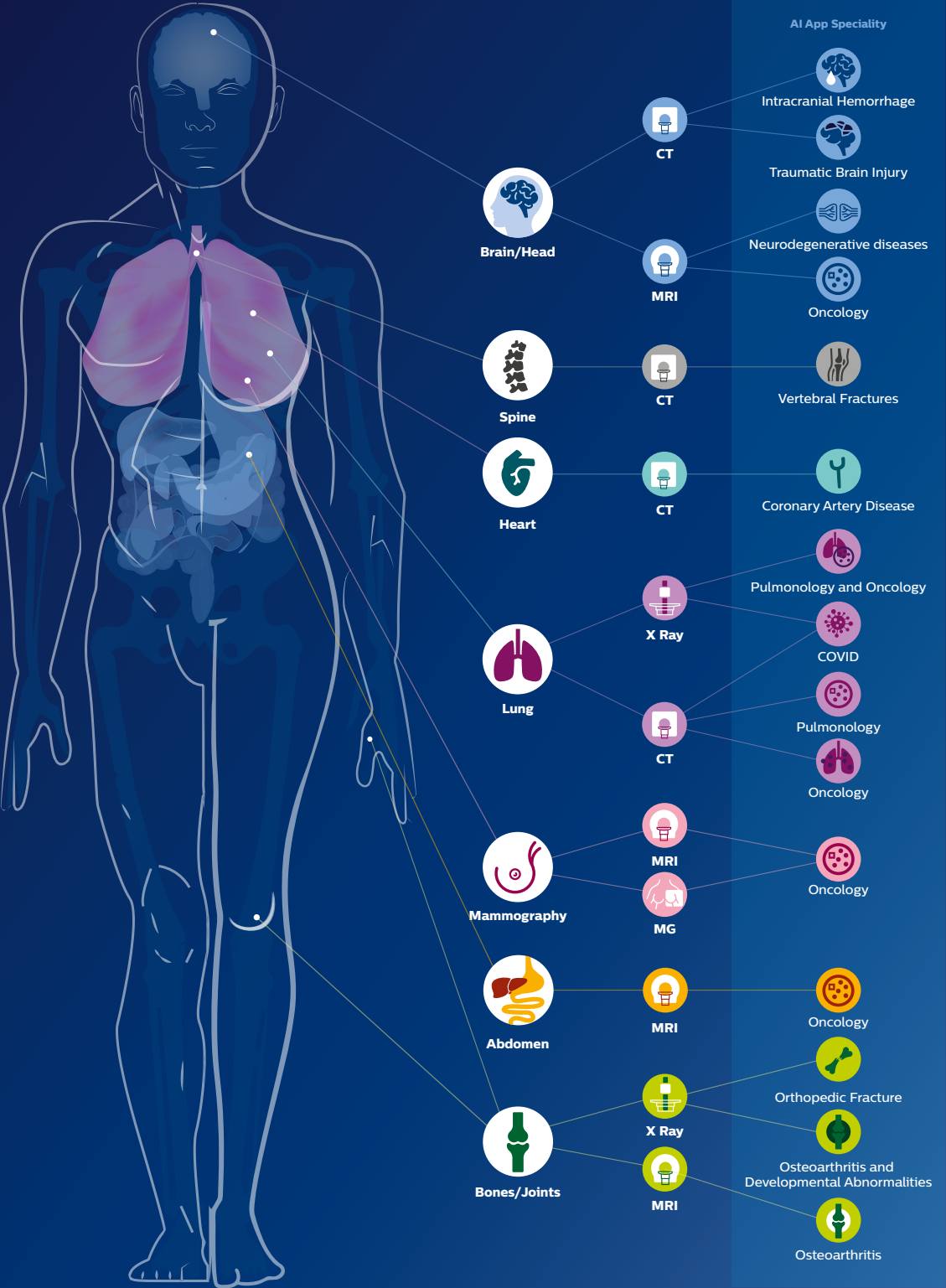
“Implementation of artificial intelligence (AI) in healthcare will be a true revolution. Philips AI solutions, such as the Philips AI Manager, will help implementing AI and improving hospital operations and patient care”

M.A. van Buchem - Chairman, Department of Radiology - Leiden University Medical Center (LUMC)



# Philips AI Manager

Fully scalable solution to host and execute multiple AI applications on a single study to support you with more comprehensive assessment and deeper clinical insights.





#### Disclaimers:

The functionalities and benefits of the solution depend on customer-specific configuration and use. Customers are advised to consult with their Philips representative for information on all the available options.

Philips AI Manager is not intended for data interpretation or diagnosis.

Availability of third party algorithms, which are offered by our partner Blackford Analysis, may vary per market and be updated from time to time.

1. Freedman M, Lo B, Seibel J, and Bromley E. Improved detection of lung nodules with novel software that suppresses the rib and clavicle shadows on chest radiographs. *Radiology*. July 2011. 260, 265-273
2. Duron L, Ducarouge A, Gillibert A, Lainé J, Allouche C, Chereil N, Zhang Z, Nitche N, Lacave E, Pourchot A, Felter A, Lassalle L, Regnard N-E, Feydy A, Assessment of an AI Aid in Detection of Adult Appendicular Skeletal Fractures by Emergency Physicians and Radiologists: A Multicenter Cross-sectional Diagnostic Study, *RSNA*, May 4 2021
3. Computer-Aided Detection of Lung Nodules on CT With a Computerized Pulmonary Vessel Suppressed Function, ShihChung B. Lo, Matthew T. Freedman, Laura B. Gillis, Charles S. White, and Seong K. Mun, *American Journal of Roentgenology* 2018 210:3, 480-488



#### How to reach us

Please visit [www.philips.com](http://www.philips.com)  
[healthcare@philips.com](mailto:healthcare@philips.com)