

# PHILIPS

 Product Picture

Wet and Dry electric  
shaver

SatinShave  
Essential

for legs

Single foil shaver

Battery operated

HP6341/00

## Safe and easy shaving

With this all-round shaver you can shave your whole body quickly, easily and safely. The secret is the small shaving head that cuts quickly while protecting your skin. A soft and smooth feeling after every use!

### Easy to use

- Battery operated
- Wet & dry for use in bath or shower

### Effortless control

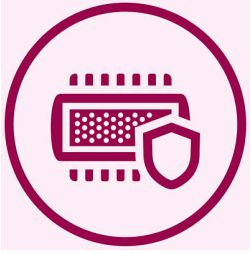
- Profiled, ergonomic grip

### Safe shaving

- Safe shaving system for ultimate skin protection

## Highlights

### Safe shaving system



The gentle small shaving head protects your skin leaving it smooth and soft

### Slim ergonomic design



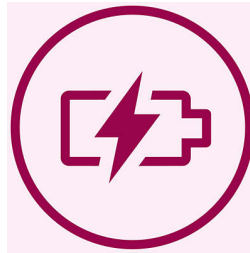
For comfortable handling

### Wet & dry use



For a gentle and comfortable use during your shower or bath routine with anti slip grip for optimal wet & dry use.

### Battery operated



Shave anywhere with this cordless lady shaver.

## Specifications

### Accessories

Cleaning brush  
2 x AA batteries  
Travel cap

### Technical specifications

Voltage: 2x 1.5 V  
Number of shaving foils: 1

### Ease of use

Handle: Ergonomic  
Cordless  
Wet and dry use

### Performance

Shaving head: Single foil shaver

