

Philips
flat HDTV

94 cm (37")

LCD
digital cable ready

37PF7320A



Turn up your viewing experience

with Pixel Plus

Experience the superior picture quality of this excellent integrated HDTV with the latest LCD technology and Pixel Plus. It's packed into a stunning design that will complement your interior. Share music and photos via the built-in USB.

Breathtaking natural pictures

- HD LCD WXGA display, with a 1366 x 768p resolution
- Integrated HDTV and CableCARD for unrivalled picture quality
- Enjoy HDTV that's truer than anything you've seen before
- Pixel Plus for detail, depth and clarity
- Progressive Scan component video for optimized image quality

Leading interface for digital quality audio/video

- HDMI input for full digital HD connection in one cable

Stylish design

- Matching stand with elegant design included

One touch convenience

- Plug & Play for easier installation

Access your digital content

- USB Connector for easy, instant multimedia playing

PHILIPS

flat HDTV
94 cm (37") LCD, digital cable ready

37PF7320A/37

Highlights

LCD WXGA display, 1366 x 768p

This WXGA display with state-of-the-art LCD screen technology gives you widescreen HD resolution of 1366 x 768p pixels. It produces brilliant flicker-free progressive scan pictures with optimum brightness and superb colors. This vibrant and sharp image will provide you with an enhanced viewing experience.

Digital Cable Ready

The CableCARD is a removable card distributed by the cable providers that is inserted in the TV. This enables the "Plug-and-Play DTV" functionality as agreed between cable operators and consumer electronics manufacturers. It allows the decoding of encrypted or scrambled content delivered from the cable system. CableCARD functionality includes conditional access and copy protection. A CableCARD-enabled television without a CableCARD inserted receives high-definition standard TV broadcasts. When a CableCARD is inserted, the television receives high-value high-definition, cable programming.

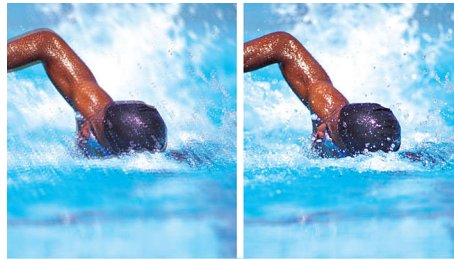
HDTV

HDTV delivers exceptional picture quality and real movie-viewing experience that makes television more dynamic, truer than anything you've seen before. It is the latest and best television signal available. It features picture quality more than twice that of traditional analog broadcasts. In order to effectively maximize the HDTV signal, a television must incorporate advanced signal input connectivity and circuitry design.

Pixel Plus

Pixel Plus is a digital picture processing technology that increases the number of lines and the number of pixels. The result is razor sharp pictures with incredible detail and depth, every time from any source.

Progressive Scan



Progressive Scan doubles the vertical resolution of the image resulting in a noticeably sharper picture. Instead of sending a field comprising the odd lines to the screen first, followed by the field with the even lines, both fields are written at one time. A full image is created instantaneously, using the maximum resolution. At such a speed, your eye perceives a sharper picture with no line structure.

Bypacked tabletop stand

A table-top stand with matching design is packed with the set.

Plug & Play

Plug & Play gives you the ability to install or add a new component and have it work without having to perform any complex installation procedure or technical analysis.

USB Multimedia Connector



The USB connector allows access to multimedia jpg, mp3 and alb files of most USB-sticks and most digital cameras (USB 1.1 memory-class device). Plug the USB into the slot at the side of the TV and access your photos or music files. This makes you easily viewing and sharing your photos and music.

HDMI input



HDMI makes an uncompressed digital RGB connection from the source to the screen. By eliminating conversion to an analog signal, it delivers an unblemished image. The non-degraded signal reduces flicker and leads to a clearer picture. HDMI intelligently communicates the highest output resolution with the source device. The HDMI input is fully backward compatible with DVI sources but includes digital audio. HDMI uses HDCP copy protection.



Specifications

Picture/Display

- Aspect ratio: 16:9
- Response time (typical): 8 ms
- Diagonal screen size (inch): 37 inch
- Diagonal screen size (metric): 94 cm
- Panel resolution: 1366 x 768p
- Picture enhancement: Pixel Plus, Progressive scan, Active Control + Light sensor, 3/2 - 2/2 motion pull down, Widescreen Plus, 3D Combfilter, Contrast Plus
- Brightness: 550 cd/m²
- Dynamic screen contrast: 800:1
- Color cabinet: Bicolour Black and Pearl White Silver
- Display screen type: LCD WXGA Active Matrix TFT
- Viewing angle: 176° (H) / 176° (V)
- Screen enhancement: Anti ageing circuit, Anti-Reflection coated screen

Supported Display Resolution

- Computer formats: 640 x 480, 60Hz, 800 x 600, 60Hz, 1024 x 768, 60Hz, 1366 x 768, 60Hz
- Video Formats: 640 x 480i - 1Fh, 640 x 480p - 2Fh, 720 x 576i - 1Fh, 720 x 576p - 2Fh, 1280 x 720p - 3Fh, 1920 x 1080i - 2Fh

Sound

- Output power (RMS): 2 x 15W
- Sound System: Virtual Dolby Digital
- Sound Enhancement: Smart Sound, Auto Volume Leveler, Digital Signal Processing, Dynamic Bass Enhancement, Graphic Equaliser

Loudspeakers

- Built-in speakers: 2

Convenience

- Child Protection: Child Lock+Parental Control
- Clock: Smart Clock
- Ease of Use: On Screen Display, Side Control, Smart Picture, Channel list, Smart Sound, Delta Volume per preset
- Remote Control: Amp, DVD-R, Multi-functional, Sat, VCR, DVD
- Screen Format Adjustments: 7 Widescreen Modes, Auto Format, Subtitle and Heading Shift

- Ease of Installation: Autostore, PLL Digital Tuning, Plug & Play, Automatic Tuning System (ATS)
- Remote control type: RC4345/01
- Teletext: Closed Captioning Full Text
- Picture in Picture: HDMI-Component PIP

Multimedia Applications

- Multimedia connections: USB memory class device
- Playback Formats: JPEG Still pictures, MP3, Slideshow files (.alb)
- Digital Content Management: Digital Media Reader

Tuner/Reception/Transmission

- Aerial Input: 75 ohm F-type
- TV system: ATSC, NTSC
- Video Playback: NTSC
- Cable: Digital Cable Ready CableCARD, Unscrambled Digital Cable QAM

Connectivity

- Other connections: Cable Card Interface, Monitor out, CVBS, L/R (cinch), S/PDIF in (coaxial), S/PDIF out (coaxial)
- AV 1: Audio L/R in, CVBS in, RGB+H/V, S-Video Y/C, YPbPr, Component Video in, (1, 2, 3Fh autoranging), Y/C
- AV 2: Audio L/R in, CVBS, S-Video
- AV 3: S/PDIF digital coaxial, YPbPr, (1, 2, 3Fh autoranging)
- AV 4: HDMI
- AV 5: HDMI
- Front / Side connections: Audio L/R in, CVBS in, Headphone Out, S-video in, USB 1.1

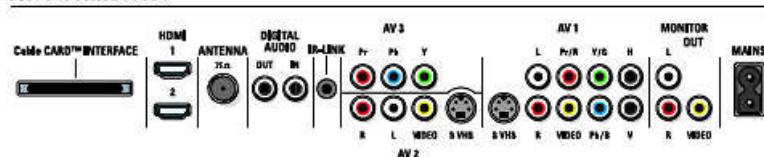
Power

- Mains power: AC 108 - 132 V, 60 Hz
- Power consumption: 185 W
- Standby power consumption: < 2 W
- Ambient temperature: 5 °C to 40 °C

Dimensions

- Set Height: 610 mm
- Set Width: 1105 mm
- Set Depth: 97 mm
- Product weight (lb): 66.15 lb

Rear connectors



Side connectors



Issue date 2023-11-03

Version: 29.0.32

UPC: 0 37849 96250 3

© 2023 Koninklijke Philips N.V.
All Rights reserved.

Specifications are subject to change without notice.
Trademarks are the property of Koninklijke Philips N.V.
or their respective owners.

www.philips.com