



Philips WardrobeCare
Integrated ironing board

Iconic trolley design
foldable board

GC9940/05

Half the effort, maximum reward

Integrated ironing system

The Philips Wardrobe Care GC9940/05 integrated ironing system offers you effortless ironing from set-up through to storage. An active ironing board is combined with a powerful iron for professional ironing results at home.

All in one ironing solution

- Integrated ironing board with pressurised steam generator

Easy set-up and storage

- Iconic trolley design with foldable board

Professional ironing results achieved effortlessly

- Unique OptimalTemp: carefree ironing, no setting required
- Fast ironing: up to 6 bar steam pressure, 120 g/m steam output
- Shirt shaped end for easy shirt ironing
- Active ironing board with blowing and suction function
- Vertical ironing and steaming

Easy and effective anti-calc system

- DualProtect Anti-calc system for hassle-free ironing

PHILIPS

Highlights

DualProtect Anti-calc system

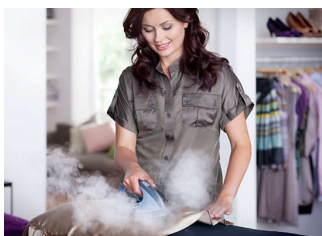


The DualProtect Anti-calc system is designed to keep the system 99% calc-free. This easy to use anti-calc system protects the system from calc and prolongs its lifetime. The double protection is ensured by special anti-calc cartridges that prevent calc from entering the system and an extra rinse cycle once the cartridges are replaced. Double protection, so you can enjoy hassle-free ironing without worrying about calc.

Integrated board and iron

Integrated Philips ironing board with pressurised steam generator.

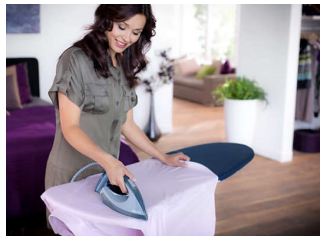
Active ironing board



A perfect ironing result made easy. The active ironing board has a fan, which enables a blowing and a suction function. With the blowing function you iron on a cushion of air, which is ideal for light and delicate fabrics,

preventing false creases and shiny parts on dark fabrics. The suction function helps to keep the garment fixed on the board, and lets you create the perfect pleat in trousers.

Easy shirt ironing



Now you can finally iron a shirt easily. Thanks to the unique board shape with one end especially designed for shirts, ironing shirts will be easy and fast. Shirts fit perfectly around the shoulder shaped board end, so that you will need less rearranging of the shirt on the board. You can iron the back and shoulder area in one go, thereby helping you to save time and effort.

Fast ironing: 6 bar, 120 g/min



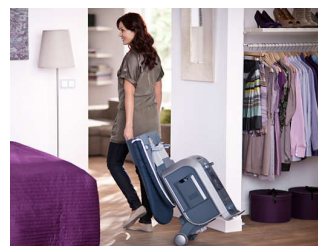
Fast ironing is possible due to up to 6 bar steam pressure and up to 120 g/min continuous steam output. Thanks to the powerful performance and the OptimalTemp Technology, ironing with the WardrobeCare is faster than other integrated boards on the market.* *Tested against leading competitor, SLG, May 2011.

OptimalTemp Technology



The unique and revolutionary OptimalTemp system always has the perfect combination of steam and temperature for all garments, enabling you to remove creases in an efficient and gentle way. Ironing will be peaceful, safe and fast. No need to adjust the temperature or steam anymore, no risk of burning delicate fabrics and no need to wait for the iron to heat up or cool down in between garments.

Iconic trolley design



Iconic trolley design with foldable board. The unique design of the Philips WardrobeCare makes it the easiest to set up and store integrated board on the market*. *Tested against leading competitor, SLG, May 2011.

Vertical ironing and steaming

Vertical ironing and steaming

Specifications

Fast and powerful crease removal

- Soleplate: SteamGlide
- Continuous steam output: 120 g/min
- Power: 2000-2400 W
- Pressure: Up to 6
- Vertical steaming
- Steam tip

Easy to use

- Water tank capacity: 1600 ml
- Refill any time
- Filling and emptying water: Detachable water tank, Extra-large filling hole
- Heat-up time: 2 minute(s)
- Safe for all fabrics: Even for delicates such as silks
- Safety auto off
- Soft grip

- Cord freedom (swivel): 180 degree cord freedom
- Cord storage: Automatic cord winder
- Power cord length: 2.5 m
- Hose length: 1.6 m

Technical specifications

- Weight of iron + base: 20 kg
- Voltage: 220-240 V
- Product dimensions: 56.6 x 46.7 x 79.7 cm
- Weight of iron: 1.3 kg

Accessories

- Delicate fabric protector: OptimalTemp

Calc management

- Calc clean solution: DualProtect Anti-calc system
- Suitable for tap water



Issue date 2023-10-30

Version: 1.0.2

© 2023 Koninklijke Philips N.V.
All Rights reserved.

Specifications are subject to change without notice.
Trademarks are the property of Koninklijke Philips N.V.
or their respective owners.

www.philips.com