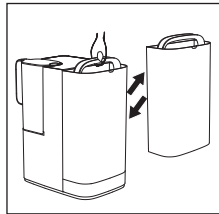
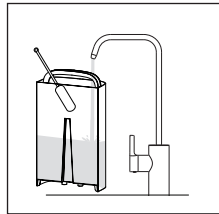


Quick Start Guide Philips RO Water Station ADD6920

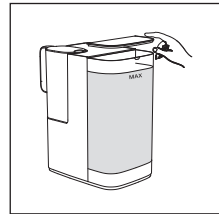
First time use



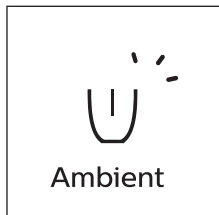
Take the tap water tank from the appliance for cleaning and easy refill.



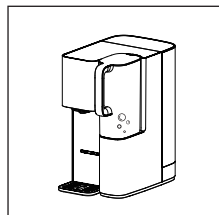
Clean the water tank and both the filtered-water-jugs using brush and dishwashing liquid.



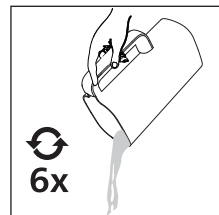
Fill the water tank to the MAX-line and insert it back in. Put the lid on the water tank.



For first time use, select ambient water temperature to avoid dry-heating.

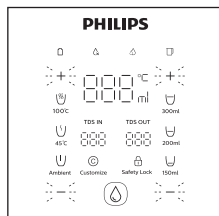


When a new filter has been installed, the appliance will produce micro air-bubbles visible in the filtered-water-jug.

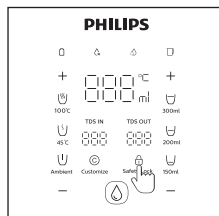


Let the appliance fill the filtered-water-jug and discard the filtered water. Repeat this process until no more air bubbles are visible (approx. 6 jugs of water).

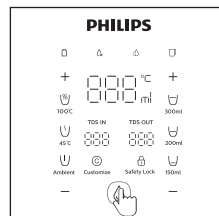
Daily use



Set your desired water temperature and desired water dispensing volume.



Press the lock button to disable child-lick mode* (*not needed if ambient temperature is selected)



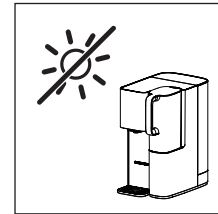
Press the water drop button to start dispensing.

© 2023 AquaShield
All rights reserved.
Philips and the Philips Shield Emblem are registered trademarks of Koninklijke Philips N.V. and are used under license.
This product has been manufactured by and is sold under the responsibility of Hong Kong AquaShield Health Technology Company Limited and Hong Kong AquaShield Health Technology Company Limited is the warrantor in relation to this product.
Rev A JUL 23

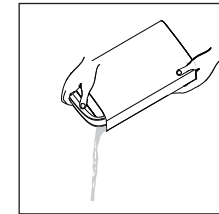


IMPORTANT – Read Before Use

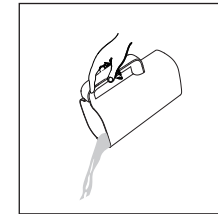
Daily maintenance



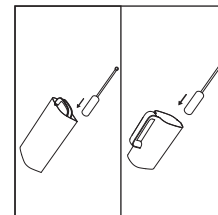
Avoid direct sunlight towards the water tank and water jugs.



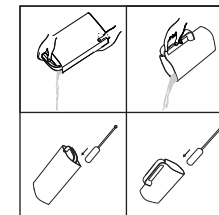
Always empty the 6L tap water tank before refilling it to its maximum line.



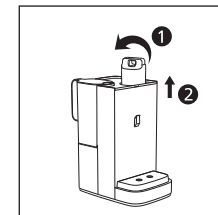
Discard the filtered water in the filtered-water-jug if the appliance hasn't been used for over 24 hours.



Clean the tap water tank and water jugs regularly (weekly), using brush and dish-washing liquid.



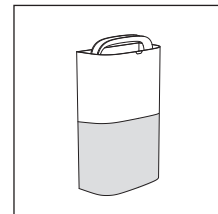
Empty and clean the water tank and water jugs when the appliance will not be used for over one week.



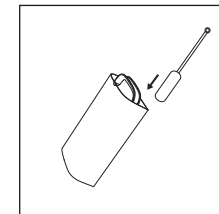
Take the filter cartridge out, seal it and store in a fridge (2-5 degrees).

Quarterly* descaling of the tap water tank with a citric acid solution

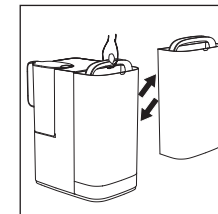
(* more frequently in areas with hard water)



Fill the tap water tank half full, add citric acid solution and stir lightly.



Leave the citric acid solution in the water tank soaking for 2 hours.



Discard the citric acid solution and rinse the tank with tap water before refilling and inserting back into the water station.

尺寸：120x180mm