

Philips NeoPix Prime
Home projector

LED LCD

Up to 120"
Wi-Fi and Bluetooth
Built-in stereo speakers

NPX540



Don't be afraid of the dark

with the ultra accessible projector

Get a super 120" HD picture, enjoy a comfortable image, stereo sound, Wi-Fi screen mirroring, Bluetooth and all the connectivity you need for streaming your favorite contents.

Incredible images

- Project images up to 120" in HD
- Customize your projection
- Advanced LED Light Source

Play, connect, repeat

- Built-in Media Player for unlimited binge watching
- Make It smart!
- Fully Connected (HDMI, USB, VGA or MicroSD)

Sound everywhere

- Built-in stereo speakers for crystal clear sound
- External bluetooth speakers connection

Wireless screen share

- Wi-Fi screen mirroring for smart sharing
- TV shows streaming directly from your smartphone

PHILIPS

Home projector
LED LCD Up to 120", Wi-Fi and Bluetooth, Built-in stereo speakers

NPX540/INT

Highlights

Advanced LED Light Source



The powerful LED light source displays rich, vivid colors and will last up to 30,000 hours. You won't need to replace it since it lasts 20 years with an average usage of 4 hours per day! Additionally, the power consumption is far lower than a regular lamp based projector, which means you benefit from a bigger screen and fully immersive experience, all through an eco friendly device!

Customize your projection



Place the product where ever you want! The keystone correction combined with the focus technology allow you to fine-tune images to your needs and place your projector at any distance.

Project images up to 120" HD



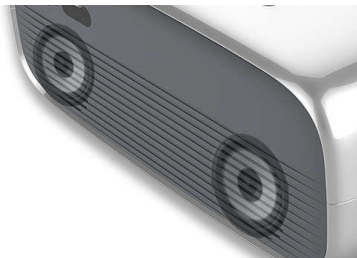
Project images and videos up to 120" (300cm) in HD 720p for detailed and clear images.

Built-in Media Player



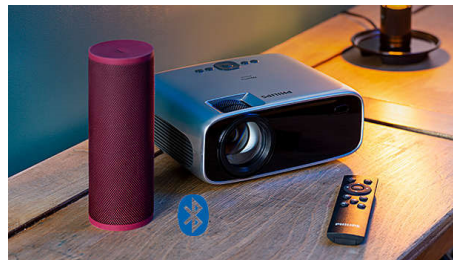
Pop your essentials in your hand with the integrated Media Player: Browse, watch all your videos, listen to your music or share your latest holidays pictures.

Built-in stereo speakers



No need for extra sound system, the built-in stereo speakers produce deep room-filling sound perfect for movies at home.

External bluetooth speakers



Connect wirelessly your projector to external boomboxes or soundbars to bring life to your movies and gaming sessions.

Fully Connected



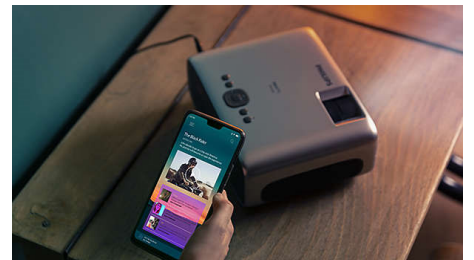
Connect any multimedia devices such as set top boxes, PC, MAC, gaming consoles, and streaming devices like Fire Stick or Apple TV with the USB, HDMI or MicroSD ports.

Make It smart!



Access to unlimited content by connecting to any smart gaming console or TV boxes like Fire Stick or Apple TV.

TV shows streaming



Stream any TV shows or movies via Wi-Fi from your smart devices.

Specifications

Technology

- Display technology: LCD
- Light source: LED
- Contrast ratio: 3000:1
- Resolution: 1280 x 720 pixel
- Throw ratio: 1,31:1
- Aspect ratio: 16:9
- Focus adjustment: Manual
- Integrated media player
- Keystone correction: Manual
- LED lifetime: Up to 20.000h
- Projection image size: up to 120" (300cm)
- Projection distance: 80 cm - 200 cm / 24"- 60"
- Resolution supported: 1920 x 1080 pixel

Connection

- Wi-Fi: Wireless screen mirroring
- Bluetooth: Connect external speaker
- HDMI: x2
- USB: x1

- VGA: x1
- Micro SD: x1
- Audio out: 3.5 mm jack
- AV in: 3,5mm jack
- DC-IN: DC jack

Sound

- Stereo Speaker: 2x3W
- Bluetooth speaker connection

Dimensions

- Weight: 2.69lbs / 1.2 kg
- unpacked (WxDxH): 220x170x90 mm / 8.6x6.6x3.5 inch

Power source

- Power consumption: Operation: 100W, Stand by <0,5W
- DC-in: 24V, 4A (AC 100-240V)



Issue date 2023-10-14

Version: 6.0.1

© 2023 Koninklijke Philips N.V.
All Rights reserved.

Specifications are subject to change without notice.
Trademarks are the property of Koninklijke Philips N.V.
or their respective owners.

www.philips.com

* Streaming content screen-mirroring requires an HDMI connection (adapter not included). This includes services like Netflix, Hulu, Canal+, Amazon Prime and more. Streaming content services cannot be screen mirrored through Wi-Fi. YouTube can be streamed via Wi-Fi and HDMI.

* Projectors for direct connection to and for use with an automatic data processing machine such as a smartphone, laptop, PC, Blue-ray Player etc.