

PHILIPS

NORELCO



Dry electric shaver

Shaver 1000 Series

Electric Shaver

PowerCut Blades

4D Flex Heads

Corded use only



S1016

Easy to clean, corded shave

Enjoy an easy, convenient shave and good value from Philips Norelco Shaver 1100 Electric Shaver. With 27 self-sharpening ComfortCut blades, the shaver is corded, so it's always ready when you need it.

Easy to use

- Suitable for head shaving
- Corded use for nonstop power
- Ergonomic grip for comfortable handling
- One-touch open for easy cleaning
- Protective cap keeps the shaving head clean between shaves

A clean shave

- ComfortCut Blades for a comfortable, clean shave
- 4D Flex Heads follow your face for a comfortable shave

Sustainable

- Made with care for you and the planet

Shaver 1000 Series

Dry electric shaver

S1016/90

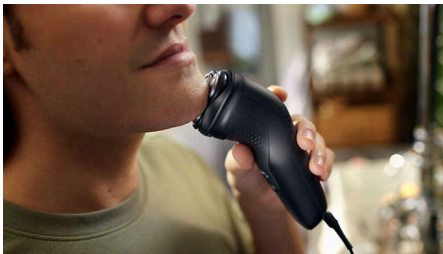
Highlights

ComfortCut Blades



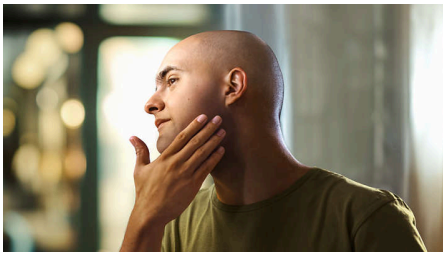
27 self-sharpening blades comfortably cut each hair right above skin level for a smooth, even finish, every time. Our self-sharpening blades stay like new for 2 years.

4D Flex Heads



Floating heads flex in four directions to maintain even contact with your skin protecting it from nicks & cuts.

Suitable for head shaving



The shaver is designed to be a versatile solution that allows you to confidently shave both your face and head

Corded use



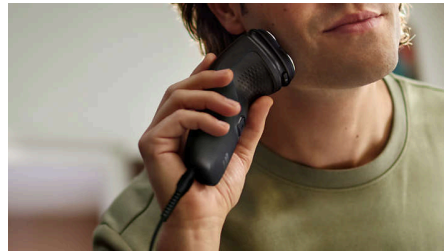
No empty batteries, no charging required always ready when you need it.

One-touch open



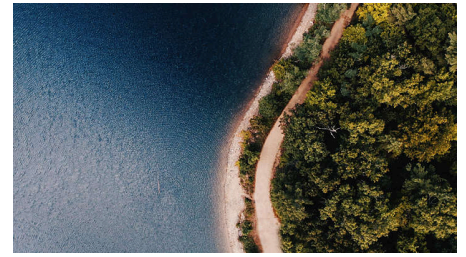
The shaver head flips open at the touch of a button to rinse clean under running water.

Ergonomic grip



Never lose your grip. The ergonomic handle with rubber stays secure and comfortable, even when wet.

Made with care for the planet



The packaging of this shaver is plastic-free and made out of 90% recycle material, while our blade production facility uses 100% renewable electricity.

Protective cap



Keep the shaving head clean and safe between shaves or when traveling.

Shaver 1000 Series

Dry electric shaver

S1016/90

Specifications

Accessories

Maintenance: Protective cap

Design

Color: Deep Black

Handle: Ergonomic grip & handle

Service

Replacement head: For best results, replace shaving heads every 24 months. Use SH30 replacement heads, sold separately.

2-year warranty

Shaving Performance

Contour following: 4D Flex Heads

Shaving system: ComfortCut Blade System, 27 self-sharpening blades, 55.000 cuts/minute

Ease of use

Cleaning: One-touch open, Fully washable

Operation: Corded use only

Waterproof: Waterproof IPX7

