

PHILIPS

Beard Trimmer

Beard Trimmer Series 3000

Self-sharpening blades

60min runtime/1.5h charge time

Integrated 1mm precision steps

Lift & trim technology



BT3303/30



Define your style. Trim it to perfection.

Self-sharpening blades for precise styling

This trimmer is designed to give you precise even trimming results without effort. The innovative lift & trim technology position the hairs for a perfect trim while the self-sharpening stainless steel blades ensure long lasting performance.

Built to last

- 3 year* warranty, worldwide voltage, no oil needed
- Longer lasting battery lifetime

Skin-friendly and precise trimming experience

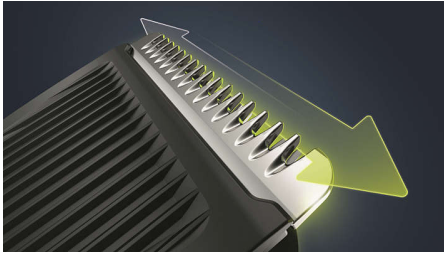
- Get a perfect but protective trim
- Full control over your beard
- Skin-friendly rounded tips for smooth skin contact
- Trims evenly and captures low-lying hairs

Easy and convenient use

- Lights indicate when battery is low, empty, full or charging
- Simple maintenance
- Cordless use for up to 60 mins
- Easy to grip
- USB charging for convenient use

Highlights

Self-sharpening blades



The self-sharpening steel blades stay as sharp and effective as on day 1 to deliver a perfect yet protective trim, time after time.

Skin-friendly blades



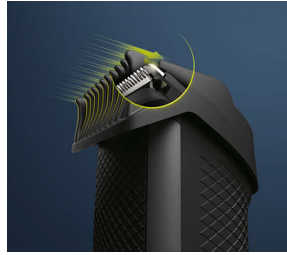
Designed to prevent scratches and irritation, the blades have rounded tips for smoother skin contact.

1mm precision steps



Cut to the exact length you are after. Easily spin the precision dial to one of the 10 length settings between 0.5-10mm. Giving you full control with 1mm precision steps.

Lift&Trim system



Perfect for stubble, the Philips beard trimmer features our new Lift & Trim system: a comb that lifts and guides the hairs to the level of the blades for an even trim.

60 min cordless use



A powerful lithium-ion battery provides up to 60 minutes of cordless grooming time with just 1.5 hour charge. The 15 minute quick charge function gives you enough power for one trim.

Battery indicators



The battery indicators in this trimmer let you know what your battery status is: Low, empty, charging or full. This way, you can charge your trimmer on time and fully, so you won't end up with an empty battery in the middle of your trim.

USB charging



This beard trimmer comes with a USB cable for more flexible charging. The adaptor is not included (recommended adaptor Philips HQ87).

Ergonomic design



A fast trimmer that's comfortable to hold and use. So you can handle those hard-to-reach areas more easily.

Easy to clean



Detach the head of your Philips beard trimmer and rinse it under the tap for easy cleaning. Then dry it before you put it back on the appliance.

Specifications

Accessories

Maintenance: Cleaning brush

Comb: Adjustable comb

Power

Battery Type: Li-ion

DuraPower technology: 4x longer battery life

Run time: 60 minutes

Charging: 1.5 hour full charge, 15 min quick charge

Maximum power consumption: 5 V

Input Voltage: 4.5 W

Charging method: USB-A (no adaptor included)

Design

Handle: Ergonomic grip & handling

Service

2-year warranty

3-year warranty *

Cutting system

Cutter width: 32 mm

Cutting element: Stainless steel blades

Range of length settings: 0.5-10 mm

Precision steps: by 1mm

Ease of use

Cleaning: Rinseable attachments

Display: Battery low indicator, Battery full indicator, Battery empty indicator, Charging indicator

Operation: Cordless use

Precision dial: Easily adjust length settings

