

PHILIPS

Multi-Styler

StyleCare

15+ styles in a box

15 attachments & accessories

Style Guide

OneClick Technology



BHH822



More styles on demand

15 attachments and style guide for various looks

Every day a different look! From perfectly polished, straight, volumized, curly hair to updos and more, create more than 15 styles with the new Philips Multi-Styler with style guide.

Ease of use

- Fast heat up time, ready to use in 45 sec
- Auto shut-off for safe usage
- 1.8 m power cord
- Swivel cord to prevent tangled wires
- OneClick Technology for quick and easy attachment changing
- 160°C to 210°C styling temperature settings
- LED indicator for styling with optimal temperature

Beautifully styled hair

- 25mm curling barrel for tight to loose curls
- 80mm straightener for sleek results
- Style guide and 11 useful hair accessories for 15+ styles
- 32mm hot brush for luxurious volume

Care for your hair

- Protective ceramic coating

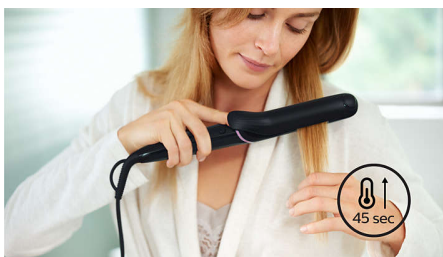
Highlights

Gentle on your hair



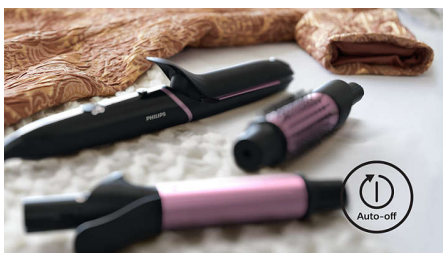
Protective ceramic coating ensures even heat distribution and less hair damage for shiny and soft hair.

Fast heat up time



This styler has a fast heat up time, being ready to use in 45 seconds.

Auto shut-off



This styler has been equipped with an automatic shut-off feature. This feature has been designed to provide peace of mind. If left on, the appliance will automatically switch off after 60 min.

1.8 m cord



Convenient to use thanks to the 1.8m power cord length.

Swivel cord



Useful swivel cord technology rotates the cord to prevent tangled wires.

OneClick release technology



Changing attachments has never been quicker or easier with the multi-styler's OneClick design. Simply click on and push the button, holding the cool tip, to release.

2 temperature settings



2 temperature settings for perfect results. Choose from a professional high temperatures for straightening to achieve long lasting results while caring for your hair.

Ready to style indicator



The ready to use indicator shows when the styler has reached the right temperature. The soft, white LED light changes from a soft pulse to constant to easily show when it's ready for use.

Curler for fabulous curls



25mm curling barrel for perfect tight to loose curls.

Straightener for sleek results



80mm straightening plates for perfect sleek results.

Specifications

Attachments

Curler
Straightener
Hot brush

Accessories

Comb
Hair clips
Elastic band: 2
Hair loop
Style guide: with 15 easy to create styles
Banana clip
Elastic mini scrunchy: 4
Hair grip

Hair pins: 4
Pull hair pin
Side comb
Spiral grip: 2

Technical specifications

Voltage: 110-240V
Heat-up time: 45 sec
Heater type: PTC
Plate size: Curler 90 mm, Heated brush 90 mm
Heat settings: 2
Cable length: 1.8 m
Styling temperature: 180°C – 210°C

Features

Cool tip
Swivel cord
Barrel diameter: Curler 25 mm
Coating of heated parts: Ceramic
Storage hook
OneClick release technology
Barrel diameter: Heated brush 32mm
Straightener size: 30x80 mm

Service

2-year worldwide guarantee

