

Philips NeoPix Easy+
Home projector

LED LCD

Up to 80"
Wi-Fi and Bluetooth
Built-in stereo speakers

NPX445



Don't be afraid of the dark

with the ultra-accessible projector

Get a super smooth experience and project pictures up to 80", enjoy a comfortable image, stereo sound, Wi-Fi screen mirroring, Bluetooth and all the connectivity you need for streaming your favourite content.

Play, connect, repeat

- Built-in Media Player for unlimited binge watching
- Make It smart!
- Fully Connected (HDMI, USB, VGA or MicroSD)

Sound everywhere

- Built-in stereo speakers for crystal-clear sound
- External Bluetooth speakers connection

Remarkable pictures

- Project images up to 80"
- Customise your projection
- Advanced LED Light Source

Wireless screen share

- Wi-Fi screen mirroring for smart sharing
- TV shows streaming directly from your smartphone

PHILIPS

Home projector
LED LCD Up to 80", Wi-Fi and Bluetooth, Built-in stereo speakers

NPX445/INT

Highlights

Advanced LED Light Source



The powerful LED light source displays rich, vivid colours and will last up to 30,000 hours. You won't need to replace it as it lasts 20 years with an average usage of 4 hours per day! Additionally, the power consumption is far lower than a regular lamp-based projector, which means you benefit from a bigger screen and fully immersive experience, all through an eco-friendly device!

Customise your projection



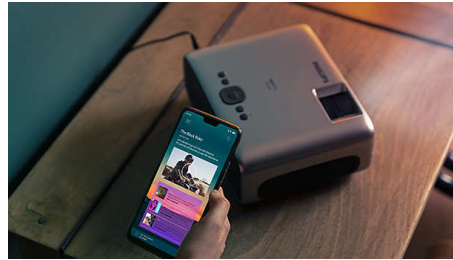
Place the product wherever you want! The keystone correction combined with the focus technology allow you to fine-tune images to your needs and place your projector at any distance.

Project images up to 80"



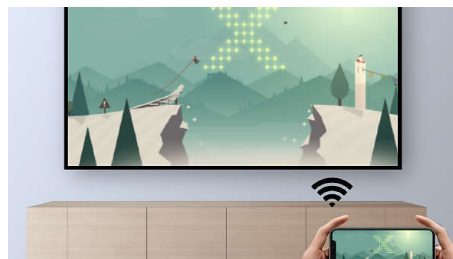
Project images and videos up to 200 cm (80") from less than 2 metres from the wall.

TV shows streaming



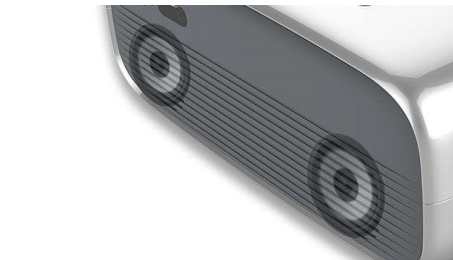
Stream any TV shows or films via Wi-Fi from your smart devices.

Wi-Fi screen mirroring



Connect your mobile devices such as a tablets, smartphones or even computers wirelessly to mirror and share all your contents. Videos on your phones? No worries, just cast it through Wi-Fi! (iOS, Android, Mac and PC)

Built-in stereo speakers



No need for extra sound systems; the built-in stereo speakers produce deep, room-filling sound perfect for films at home.

External Bluetooth speakers



Connect your projector wirelessly to external boomboxes or soundbars to bring life to your movies and gaming sessions.

Built-in Media Player



Pop your essentials in your hand with the integrated Media Player: Browse, watch all of your videos, listen to your music or share your latest holiday pictures.

Fully Connected



Connect any multimedia devices such as set top boxes, PC, MAC, gaming consoles and streaming devices like Fire Stick or Apple TV with the USB, HDMI or MicroSD ports.

Specifications

Technology

- Display technology: LCD
- Light source: LED
- Contrast ratio: 3000:1
- Resolution: 800 x 480 pixel
- Throw ratio: 1,4:1
- Aspect ratio: 16:9
- Focus adjustment: Manual
- Integrated media player
- Keystone correction: Manual
- LED lifetime: Up to 20,000h
- Projection image size: up to 200 cm (80")
- Projection distance: 80 cm - 200 cm/24" - 60"
- Resolution supported: 1920 x 1080 pixels

Connection

- Wi-Fi: Wireless screen mirroring
- Bluetooth: Connect external speaker
- HDMI: x 1
- USB: x 1

- VGA: x 1
- Micro SD: x 1
- Audio out: 3.5 mm jack
- AV in: 3.5-mm jack
- DC-IN: DC jack

Sound

- Stereo Speaker: 2 x 2 W
- Bluetooth speaker connection

Dimensions

- Weight: 1.89lbs / 0.86 kg
- unpacked (W x D x H): 207 x 150 x 84.5 mm/8.14 x 5.9 x 3.32 inch

Power source

- Power consumption: Operation: 42 W, Stand by <0,5 W
- DC-in: 12 V, 3.5 A (AC 100-240 V)



Issue date 2023-09-28

Version: 5.0.1

© 2023 Koninklijke Philips N.V.
All Rights reserved.

Specifications are subject to change without notice.
Trademarks are the property of Koninklijke Philips N.V.
or their respective owners.

www.philips.com

* Streaming content screen-mirroring requires an HDMI connection (adapter not included). This includes services like Netflix, Hulu, Canal+, Amazon Prime and more. Streaming content services cannot be screen mirrored through Wi-Fi. YouTube can be streamed via Wi-Fi and HDMI.

* Projectors for direct connection to and for use with an automatic data-processing machine such as a smartphone, laptop, PC, Blu-ray player etc.