

PHILIPS

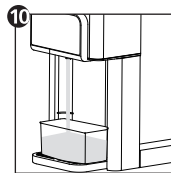
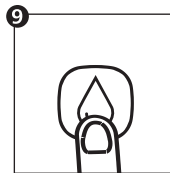
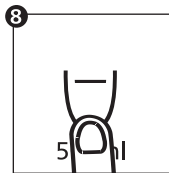
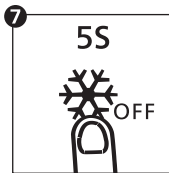
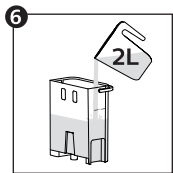
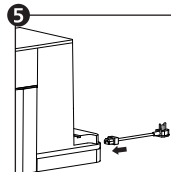
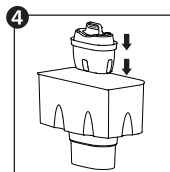
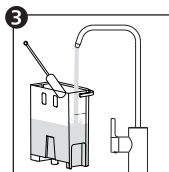
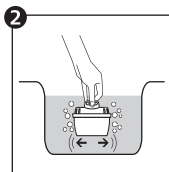
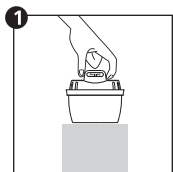
Water Dispenser

ADD5981

Read this First !

Quick Start Guide & FAQs

First time cleaning



10 * Dispense water till the water tank is empty.

User interface



Safety Lock

When hot water $\geq 40^{\circ}\text{C}$ is chosen, press to unlock before pressing the dispense button. Press to lock the appliance.



Dispense Button

Press to start or stop dispensing. Long press for 3 seconds to continuously dispense 1L of ambient water.



Descal Indicator/Button

Lights up when it is time to descale. Long press for 3 seconds to start the descaling process. During descaling, press Dispense Button to pause, and press Descal or Dispense Button to restart.



Water Temperature Selection



Water Volume Selection



Cooling Indicator

Lights flashing when the water is being cooled. Lights up constantly when the cooling is done.



Water Shortage Indicator

Light flashing: not enough water in the water tank. Light off: enough water in the water tank.



Filter Lifetime Indicator

Light flashing: the filter is about to reach the end of life.
Lights up constantly: the filter reaches the end of life.



Turn on/off cooling system

Long press for 5 seconds to turn off/turn on the cooling system.

The lifetime of the filter cartridge

Model	Suggested Replacement Cycle
AWP230	After 100 liters or every 30 days, whichever comes first.

Filter lifetime indicator flashes: the filter is about to reach the end of life.

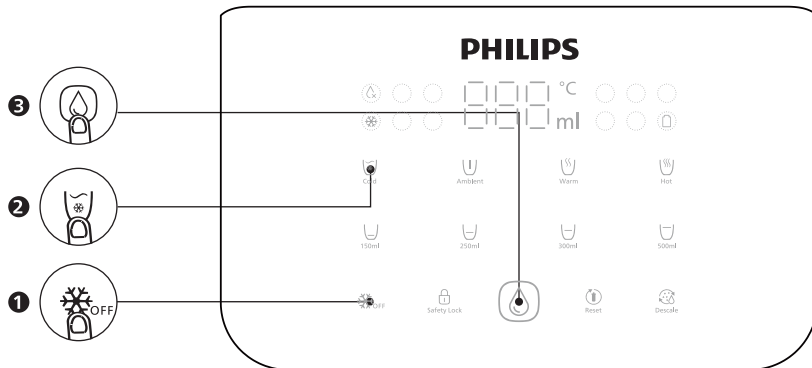
Filter lifetime indicator lights up constantly: the filter reaches the end of life.



Filter Lifetime Reset

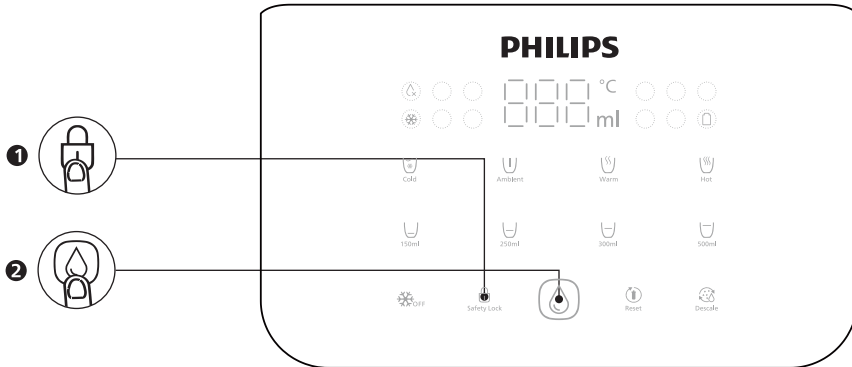
Long press for 3 seconds to reset the filter lifetime.

How to fill the internal water tank ? (and start the cooling process)



- Long press " ❄️ OFF " for 5 seconds to turn on cooling system
- Press " ❄️ " "500ml" and " 💧 "

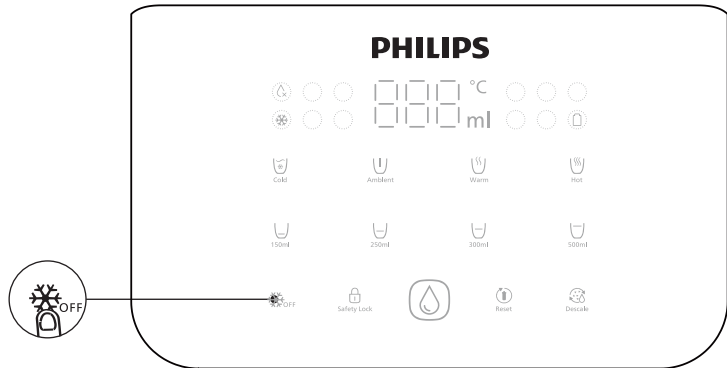
How to dispense water ?



- When hot water $\geq 40^{\circ}\text{C}$ is chosen, press the "🔒" to unlock.
- Press the "💧" to start or stop dispensing.

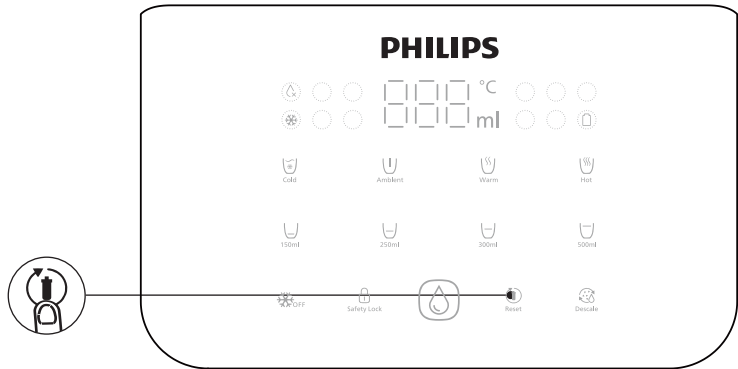
How to switch off the cooling system ?

(will stop noise produced by cooling fans)



- Long press " ❄️ OFF " for 5 seconds to turn off/turn on the cooling system.

How to reset the filter lifetime indicator?



- Long press "👉" for 3 seconds to reset the filter lifetime.



Register your product and learn more via the website link below:

www.philips.com/water

Specifications are subject to change without notice

© 2023 AquaShield

All rights reserved.

Philips and the Philips Shield Emblem are registered trademarks of Koninklijke Philips N.V. and are used under license.

This product has been manufactured by and is sold under the responsibility of Hong Kong AquaShield Health Technology Company Limited

and Hong Kong AquaShield Health Technology Company Limited is the warrantor in relation to this product.

Rev A AUG 23

