

Philips Norelco
shaving heads

GentleCut
3 heads

HQ7/52

Keep a close shave.

Change heads every 12 months for best results

Every year your blades travel the height of Mt. Everest...49 times! After such a workout, even the best materials can lose their edge. Retain your shaver's peak performance-replace heads every 12 months.

Easy to use

- Easy to replace heads

A smooth shave for a confident look

- Rotary Comfort System effortlessly glides over your skin

Our best razor for ingrown hairs

- GentleCut heads cut just above skin level for smooth skin

PHILIPS
NORELCO

Specifications

Shaving heads

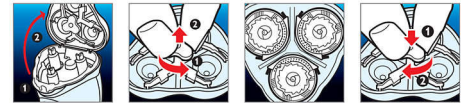
- Fits product type: AT790

- Shaving heads per packaging: 1

HQ7/52

Highlights

Simple replacement



1. Open the shaver by pressing the "release" button. 2. Remove the retainer by turning the lock counterclockwise. 3. Take out the old shaving heads and carefully insert replacements; check that the heads align exactly in the setting. 4. Replace the retainer and secure it by turning the lock clockwise. 5. When you close the shaving head properly, you will hear it click into place.

GentleCut heads



Gently cut just above skin level for smooth skin.

Rotary Comfort System



Effortlessly glides over your skin for enhanced comfort and smoothness.



Issue date 2023-09-21

Version: 3.0.1

UPC: 0 75020 03297 3

© 2023 Koninklijke Philips N.V.
All Rights reserved.

Specifications are subject to change without notice.
Trademarks are the property of Koninklijke Philips N.V.
or their respective owners.

www.philips.com