



Philips Ultinon Essential  
LED  
Car headlight bulb

**LED-HL [~H7]**  
6000 K bright white light  
Fits major car models  
Innovative heat dissipation



**11972UEX2**

## Feel unique, enjoy the difference

Stylish LED lighting that's easy to fit

Compatible with most cars, you can easily upgrade your style and safety. Featuring a stylish look and ThermalCool heat dissipation technology, Ultinon Essential LED [~H7] headlight bulbs provide consistently high-performing light.

### Compatible with most car models

- Compact design for quick and simple installation
- Optional connector rings to ensure fit on most car models

### Reliable Philips quality

- Highest quality Philips automotive lighting
- Expect long-lasting performance, not early failure

### ThermalCool heat management

- ThermalCool heat management for superior performance
- Excellent cooling material for effective heat dissipation

### Precise beam pattern for increased safety

- See more and avoid dangerous glare with a precise beam

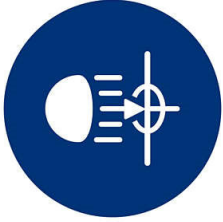
### Powerful brightness

- Philips technology for bright white lights
- Lumileds Luxeon ZES boosts performance in projectors

# PHILIPS

# Highlights

## Powerful brightness



For that modern high-end look, customize your car with Ultinon Essential LED headlights. With 6000 Kelvin color temperature, these lights project a stylish, white light. Featuring innovative heat management system, these LED bulbs provide a consistently bright beam of light for your journey.

## Optimized for projector system

The new LED Upgrades are designed to operate in both reflector and projector car headlamps. The light source design based on Lumileds Luxeon ZES LED chips is specifically optimized to maximize the low beam and high beam performance of car headlamps. It maximizes road illumination through a long and homogeneous beam pattern while reducing the glare for incoming traffic.

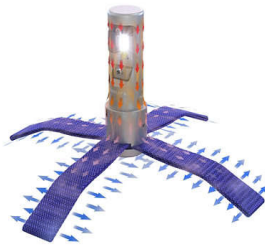
## Effective heat management



Heat management is a critical factor in the performance of LED lights. Built with a unique one-piece design, Philips Ultinon Essential LED headlights dissipate heat effectively, so they always perform at the optimal brightness level

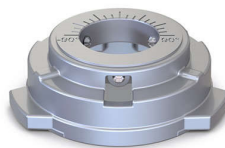
(even when they get very hot – unlike inferior quality LEDs). And they also last longer, so you don't have to replace them as often. Unique ThermalCool technology has been tested in real-life automotive conditions, not just in the laboratory (unlike many competitive products). So you can have confidence in their stated high performance.

## Excellent cooling material



Ultinon Essential LEDs are highly resistant to heat damage because they're built from superior materials. Many competitive products can start to emit a weaker beam of light when the LEDs get hot, because they use inferior metals and have less efficient heat dissipation technology. Ultinon Essential LED headlights contain a heat sink with flexible copper braids and an aluminum burner, which help heat to escape quickly, so you get a consistently powerful beam of light throughout your entire journey.

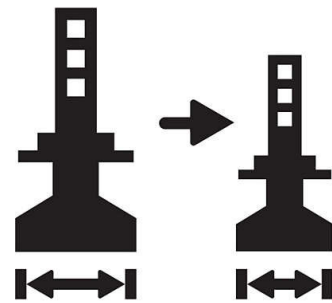
## Model-specific connector rings



Because H7 headlights feature a wide variety of lamp brackets, you can sometimes have trouble fitting LED lights. Not with Philips

Ultinon Essential LEDs. Optional Philips LED connector rings ensure they fit the largest selection of car models, so you can buy with peace of mind Philips LED knowing they will fit your car.

## Compact design for easy fit



The compact design of the Ultinon Essential LED bulbs make installation simple. Even in the smallest headlamps, you'll have space to fit these bulbs. Because of the flexible copper braids of the heat sink, and the curved control box, you can fit your new LED lights in cars where other products would be too bulky.

## See more with a precise beam

Thanks to the precise optical design of Philips Ultinon Essential LED, the light will be projected just where you need it on the road. Not only will you be able to spot obstacles faster and drive with more confidence, you'll avoid blinding other drivers with dangerous glare (making everyone on the road safer). For a sharp beam, it's also important that the bulb is correctly positioned in your headlamp. Using adjustable connector rings, you can ensure perfect alignment for optimal light performance and enhanced road safety.

Car headlight bulb  
LED-HL [-H7] 6000 K bright white light, Fits major car models, Innovative heat dissipation

11972UEX2

# Specifications

## Marketing specifications

- Expected benefits: Style
- Product highlight: Philips LED lamps

## Product description

- Application: High beam, Low beam
- Base: PX26d
- Designation: 11972UEX2
- Homologation ECE: NO
- Range: Ultinon Essential LED
- Technology: LED
- Type: [-H7]

## Lifetime

- Life time: Up to 5 years

## Light characteristics

- Color temperature: 6000 K

## Electrical characteristics

- Wattage: 16 W
- Voltage: 12 V

## Ordering information

- Order entry: 11972UEX2
- Ordering code: 5119631

## Packaging Data

- Packaging type: X2
- EAN1: 8719018051196
- EAN3: 8719018051202

## Packed product information

- Gross weight per piece: 1460 g
- Length: 30.5 cm
- Width: 16.5 cm
- Height: 20.5 cm
- Net weight per piece: 1260 g
- Pack Quantity: 2
- MOQ (for professionals): 6

## Outerpack information

- Length: 116.7 cm
- Width: 92.7 cm
- Height: 123.6 cm



Issue date 2023-09-14

Version: 7.1.1

© 2023 Koninklijke Philips N.V.  
All Rights reserved.

Specifications are subject to change without notice.  
Trademarks are the property of Koninklijke Philips N.V.  
or their respective owners.

[www.philips.com](http://www.philips.com)

\* It is your own responsibility to ensure that the use of the LED retrofit lights complies with applicable local legal requirements.