

# PHILIPS



Wet & Dry Electric  
Shaver

Shaver 3000 Series

5D Pivot & Flex Heads

PowerCut Blades

Anti-Corrosion Shaving System

Shave wet & dry



S3343/13

## Comfortable, clean shave. Even on sensitive skin With SkinProtect Technology

Philips Shaver 3000 Series Wet & Dry Electric Shaver gives you a comfortable, clean shave, even on sensitive skin. 5D Pivot & Flex Heads, 27 self-sharpening PowerCut Blades, and wet and dry use ensure excellent, reliable results every time.

### Easy to use

- Suitable for head shaving
- 60 minutes of cordless shaving from a 1-hour charge
- Pop-up trimmer for your mustache and sideburns
- One-touch open for easy cleaning
- Anti-slip grip for a secure shave
- 3-level battery indicator to know when it's time to charge
- Charging stand keeps your shaver powered up and ready
- Convenient charging

### A clean shave

- PowerCut Blades for a consistent, clean shave

### Skin Protect technology

- 5D Pivot & Flex Heads stay close to every angle and curve
- Wet and dry shaving at the sink or in the shower

### Sustainable

## Shaver 3000 Series

Wet & Dry Electric Shaver

S3343/13

# Highlights

### 5D Pivot & Flex Heads



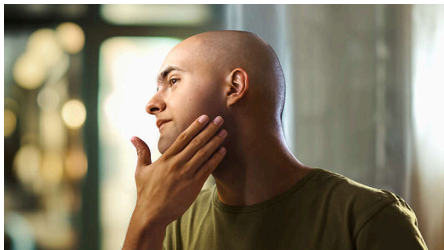
By flexing and pivoting in five directions, the head follows every curve of your face cutting just above skin level for a clean, comfortable shave even on sensitive skin.

### PowerCut Blades



27 self-sharpening blades consistently cut each hair right above skin level for a smooth, even finish, every time. Our self-sharpening blades stay like new for 2 years.

### Suitable for head shaving



The shaver is designed to be a versatile solution that allows you to confidently shave both your face and head

### Wet and dry shaving



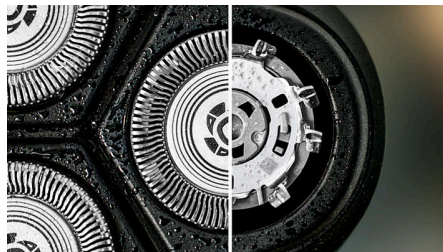
Choose a convenient dry shave, or pair with your favorite foam or gel for a refreshing wet shave, even in the shower.

### 60 minutes of cordless shaving



In just an hour, the durable Li-ion battery is fully charged for about 20 shaves. In a hurry? A 5-minute quick charge gives you enough power for one shave.

### Anti-Corrosion Shaving System



Our shaver blades are made from surgical-grade hypoallergenic steel to resist corrosion, prevent impurities, and protect your skin.

### Pop-up trimmer



Refine and define your mustache and sideburns to complete your look with the pop-up trimmer.

### One-touch open



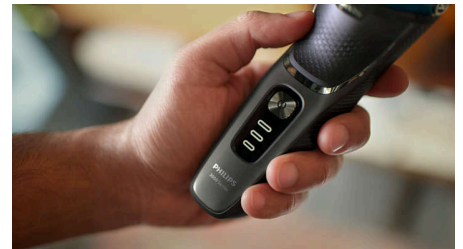
The shaver head flips open at the touch of a button to rinse clean under running water.

### Rubber grip



Never lose your grip. The ergonomic handle with rubber stays secure and comfortable, even when wet.

### 3-level battery indicator



Don't get caught with an empty battery. The battery indicator lets you know if the battery is low, empty, or charging.

## Shaver 3000 Series

Wet & Dry Electric Shaver

S3343/13

# Highlights

### Charging stand



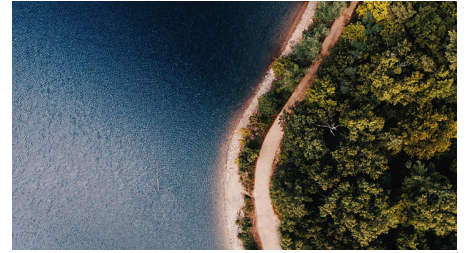
Keep your shaver charged and tidy with the convenient charging stand.

### USB-A Charging



At Philips, we drive sustainability in all aspects of product creation. Our ambition is to reduce waste and minimize the number of USB adaptors we put in the market. Should you need an adapter, a suitable supply unit is available via: [www.philips.com/support](http://www.philips.com/support)

### Made with care for the planet



The packaging of this shaver is plastic-free and made out of 90% recycle material, while our blade production facility uses 100% renewable electricity.

# Shaver 3000 Series

Wet & Dry Electric Shaver

S3343/13

## Specifications

### Accessories

**Maintenance:** Protective cap

**Stand:** Charging stand

**Pouch:** Travel pouch

**Pop-up trimmer** included

### Power

**Battery type:** Lithium-ion

**Charging time:** 1 hour full charge

**Run time:** 60 min / 20 shaves

**Quick charge:** Yes, 5 minutes

### Design

**Color:** Dark Black

**Handle:** Non-slip rubber handle

### Service

**2-year warranty**

**Replacement head:** For best results, replace shaving heads every 24 months. Use SH30 replacement heads, sold separately.

### Shaving Performance

**Shaving system:** PowerCut blade system, 27 self-sharpening blades, 55.000 cuts/minute

**Contour following:** 5D Pivot & Flex Heads

### Ease of use

**Cleaning:** One-touch open, Fully washable

**Wet & Dry:** Shave wet or dry

**Charging:** USB-A Charging (5V $\pm$  /  $\geq$ 1A)

**Display:** 3-level battery indicator

**Operation:** Cordless use only

**Waterproof:** Waterproof IPX7, Showerproof

### Skin Protect technology

**Skin Protection:** Anti-Corrosion Shaving System

