

PHILIPS

Wet and Dry electric
shaver

SatinShave
Essential

For legs and underarms

Single foil shaver

Battery operated

HP6332/50

Safe and easy shaving

With this all-round shaver you can shave your whole body quickly, easily and safely. The secret is the small shaving head that cuts quickly while protecting your skin. A soft and smooth feeling after every use!

Easy to use

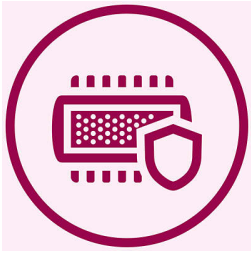
- Battery operated
- Wet & dry for use in bath or shower

Safe shaving

- Hypoallergenic foil

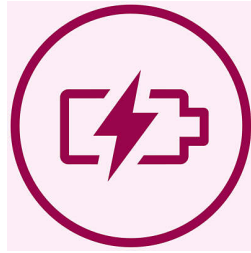
Highlights

Hypoallergenic foil



Hypoallergenic foil prevents irritations and rashes

Battery operated



Shave anywhere with this cordless lady shaver.

Wet & dry use



For a gentle and comfortable use during your shower or bath routine with anti slip grip for optimal wet & dry use.

Specifications

Accessories

Cleaning brush
2 x AA batteries
Travel cap

Technical specifications

Voltage: 2x 1.5 V
Number of shaving foils: 1

Service

Full two-year warranty

Ease of use

Handle: Ergonomic
Cordless
Wet and dry use

Performance

Shaving head: Single foil shaver

