

For product support, visit
Para obtener asistencia técnica, visite
Pour en savoir plus sur l'assistance sur les produits, visitez le site

www.hd.philips.com

HTB5544D



Quick start guide

EN: For further assistance, call the customer support service in your country.

- To obtain assistance in the U.S.A., Canada, Puerto Rico, or the U.S. Virgin Islands, contact Philips Customer Care Center at 1-866-310-0744
- To obtain assistance in Mexico, contact Philips Customer Care Center at 01 800 839 1989; Mexico city: 5887-9736

ES: Para obtener mas informacion, llame al servicio de soporte al cliente de su pais.

- Para obtener asistencia en los Estados Unidos, en Canada, Puerto Rico o en las Islas Virgenes de los Estados Unidos, comuniquese con Centro de atencion al cliente de Philips al 1-866-310-0744
- Solo para Mexico CENTRO DE ATENCION A CLIENTES LADA, 01 800 839 1989 Solo Para Mexico; Mexico city: 5887-9736

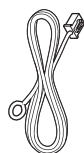
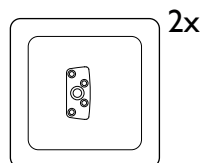
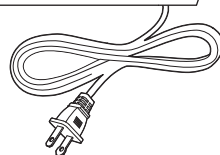
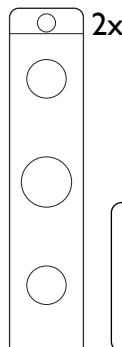
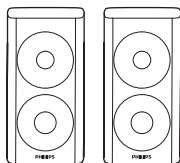
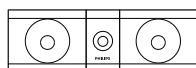
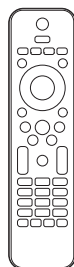
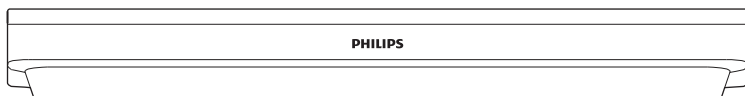
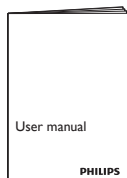
FR: Pour obtenir de l'aide supplementaire, communiquez avec le centre de service a la clientele de votre pays.

- Pour obtenir de l'aide aux Etats-Unis, au Canada, a Puerto Rico ou aux Iles Vierges americaines, communiquez avec le centre de service a la clientele Philips au : 1-866-310-0744
- Pour obtenir l'aide au Mexique, entrez en contact avec le centre de soin de client de Philips a 01 800 839 1989; Mexico city: 5887-9736



- EN** Before using your product, read all accompanying safety information
- ES** Antes de usar el producto, consulte la información de seguridad que se encuentra adjunta
- FR-CA** Avant d'utiliser votre produit, prenez le temps de lire toute l'information de sécurité connexe

For Product recycling information, please visit - www.recycle.philips.com
Para obtener información de productos de reciclaje, por favor visite - www.recycle.philips.com
Pour tout renseignement sur le recyclage des produits, veuillez visiter - www.recycle.philips.com



FM Antenna

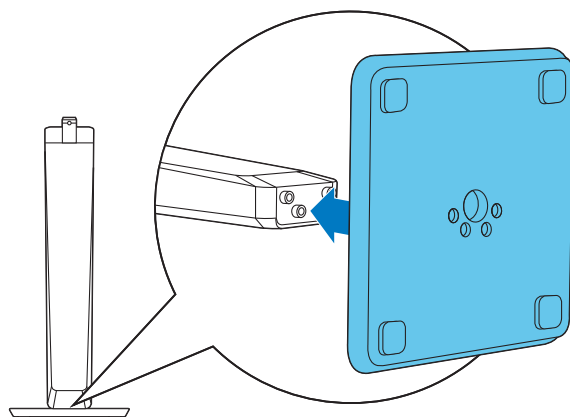
1

EN Mount stand to the speakers

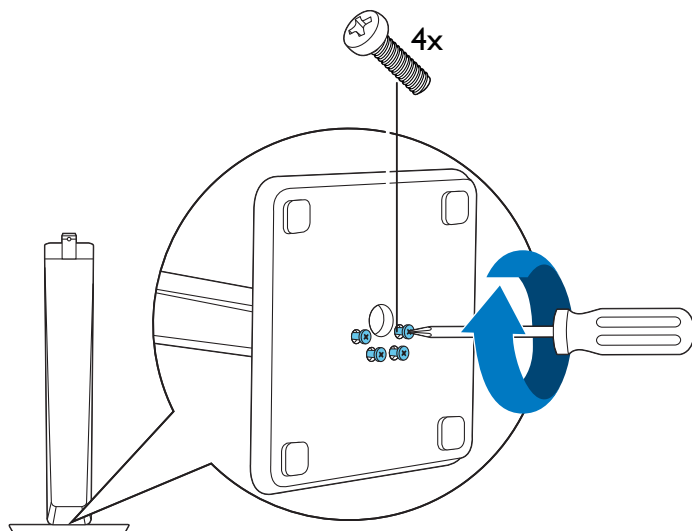
ES Montaje de los altavoces con base o soporte

FR-CA Montez les haut-parleurs sur pied.

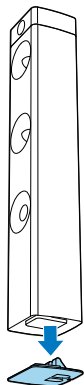
1



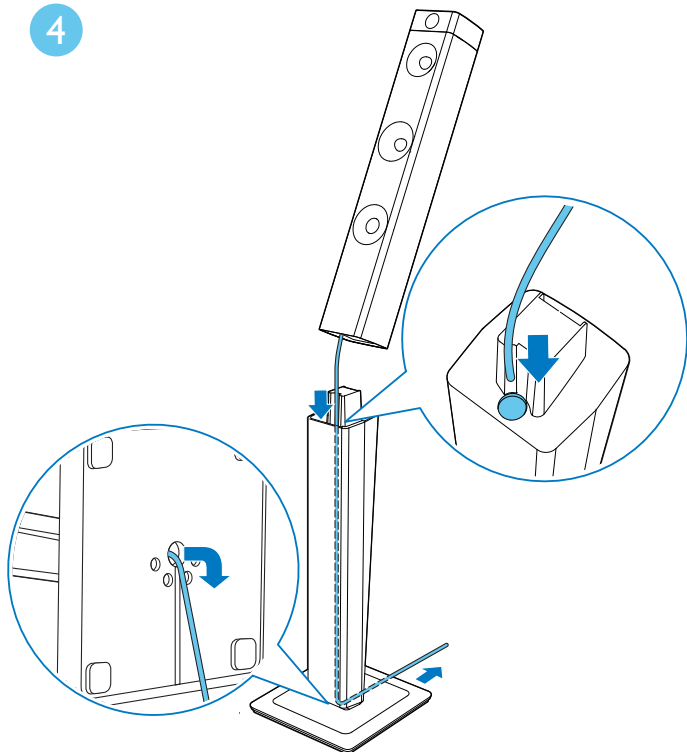
2



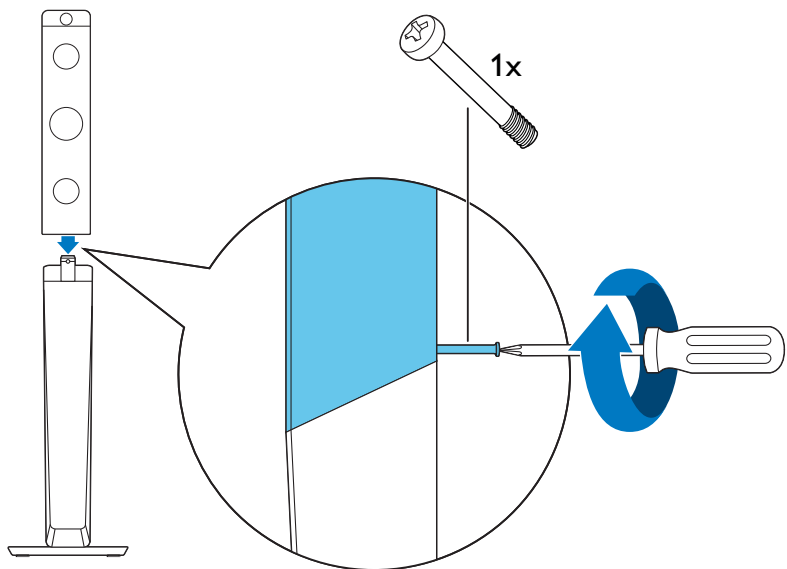
3



4

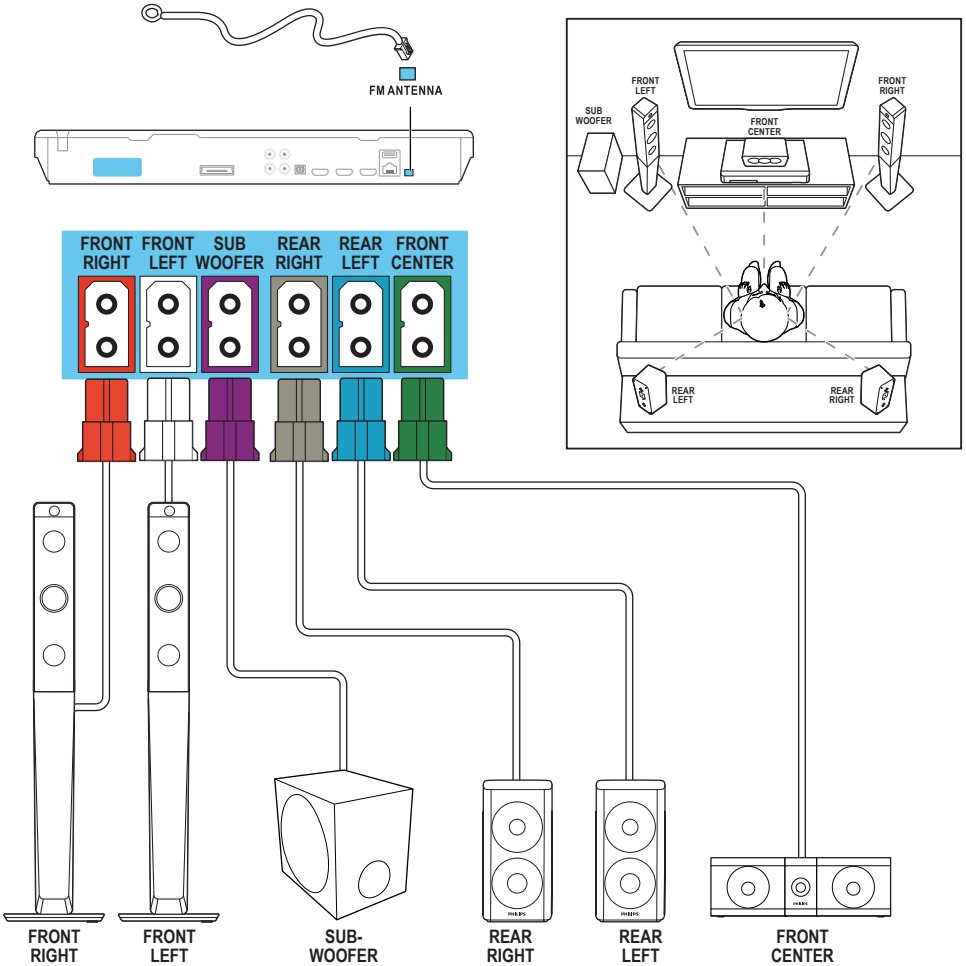


5



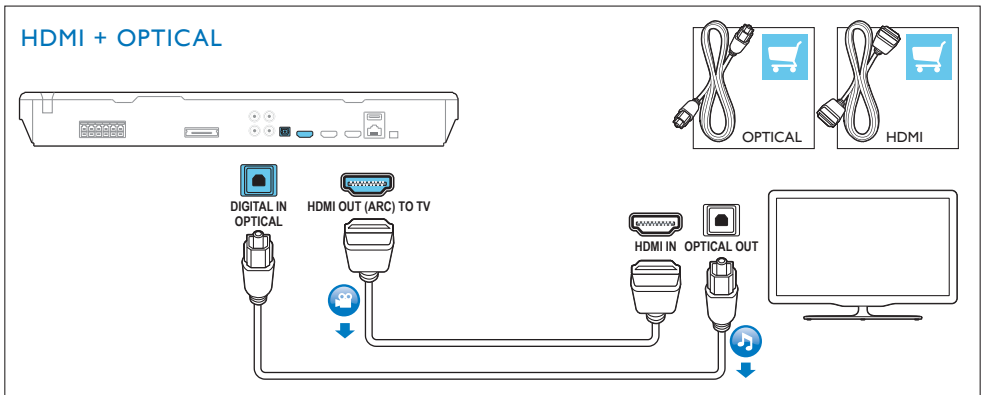
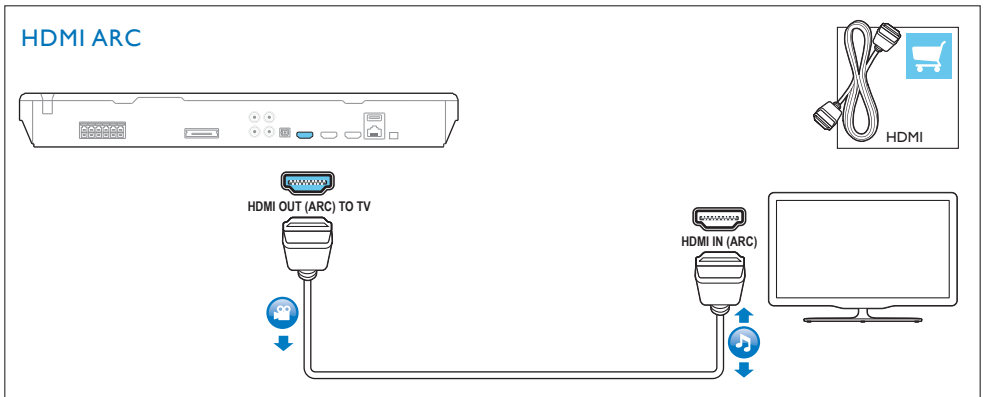
2

- EN** Connect the home theater
- ES** Conexión del Home Theater
- FR-CA** Branchez le cinéma maison

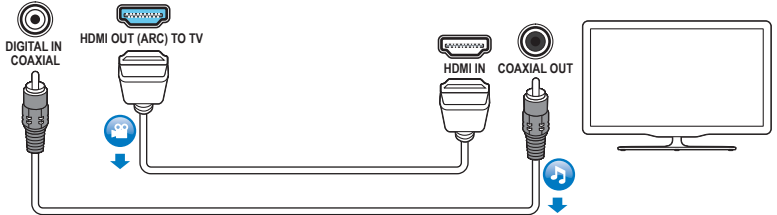


3

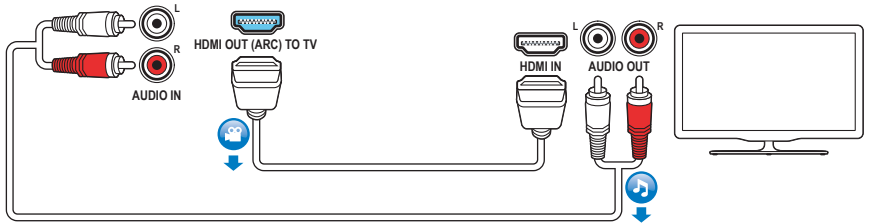
- EN** Connect to TV in one of these ways
- ES** Conecte la Home Theater a la TV de una de las siguientes formas
- FR-CA** Le branchement du cinéma maison au téléviseur peut se faire des façons suivantes



HDMI + COAXIAL

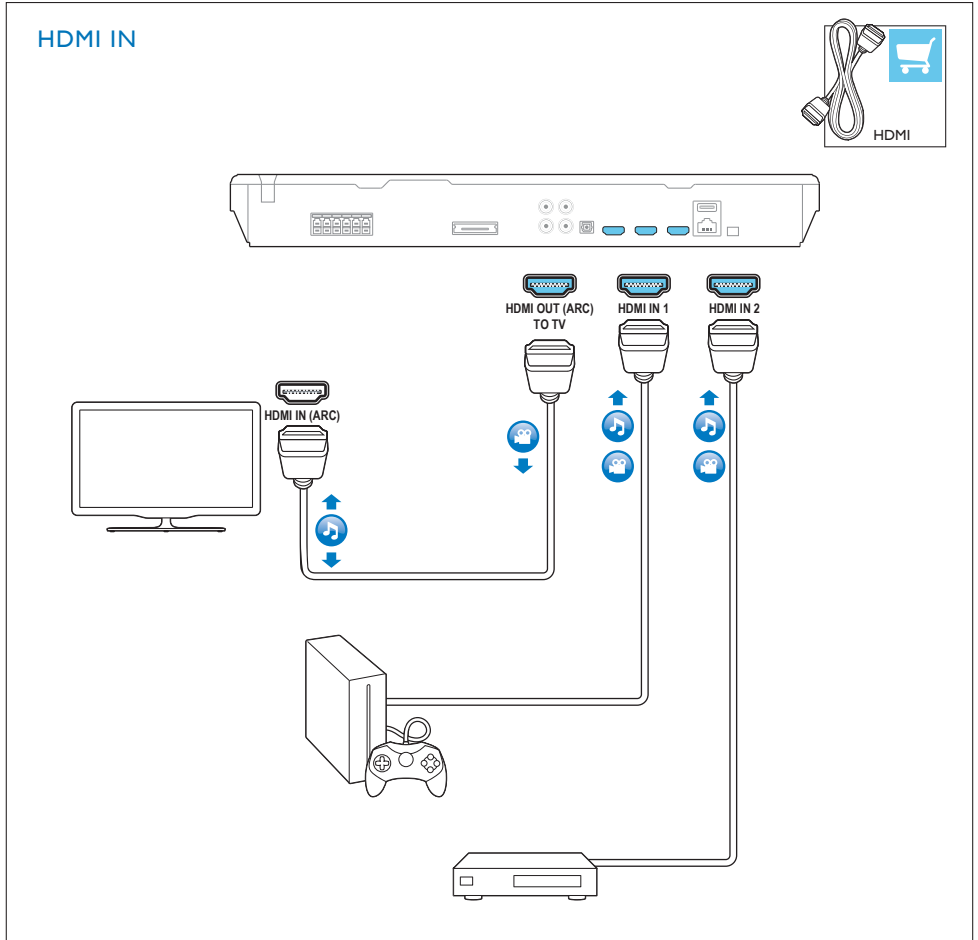


HDMI + AUDIO L/R



4

- EN** Connect with other HDMI devices
- ES** Conecte con otros dispositivos HDMI
- FR-CA** Connectez l'appareil à d'autres périphériques HDMI



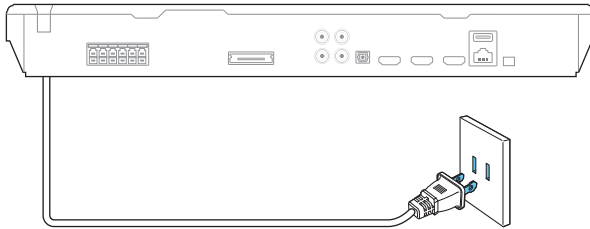
5

EN Switch on the home theater

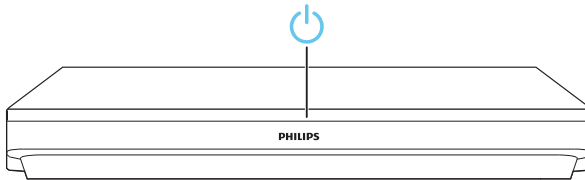
ES Encendido del Home Theater

FR-CA Allumez le cinéma maison

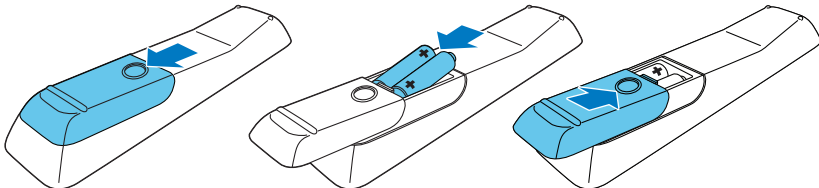
1



2

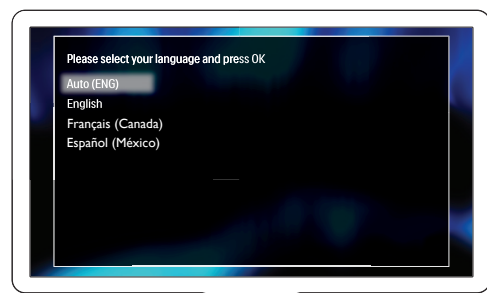
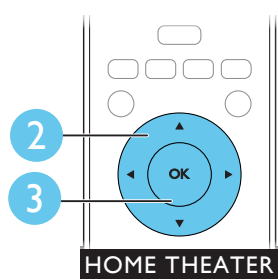
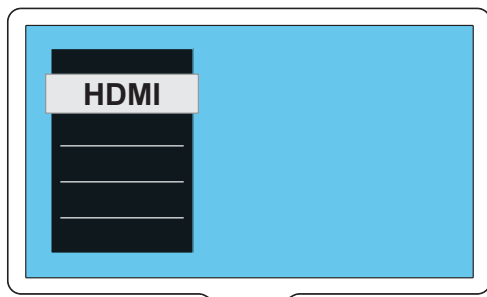
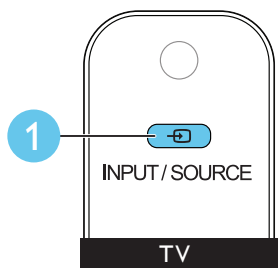


3



6

- EN** Complete the first time setup
- ES** Proceso de configuración inicial
- FR-CA** Effectuez la première configuration

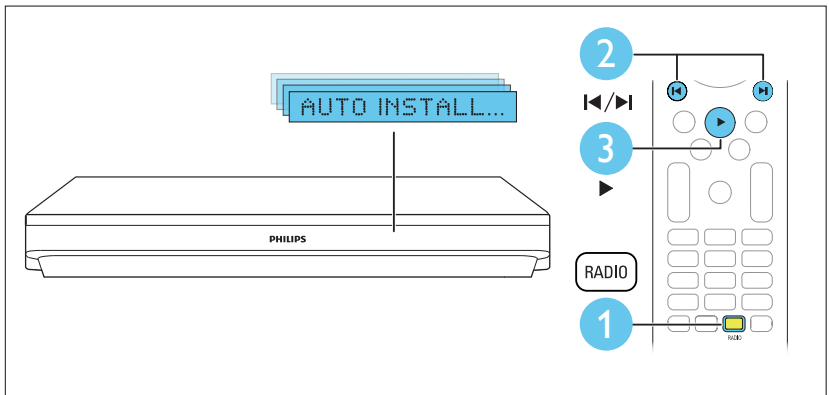
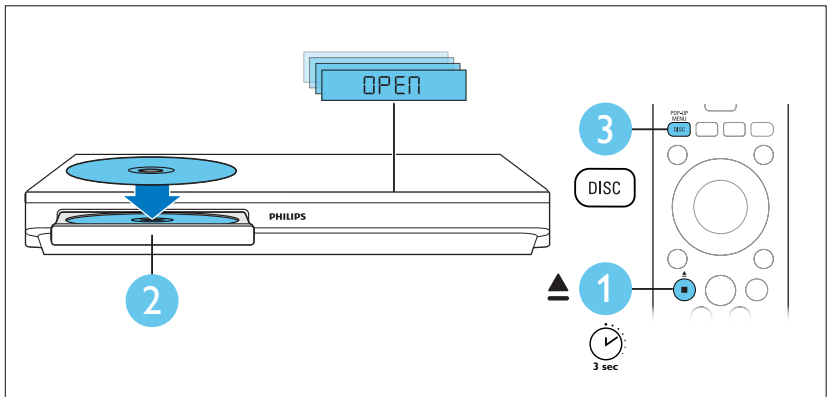


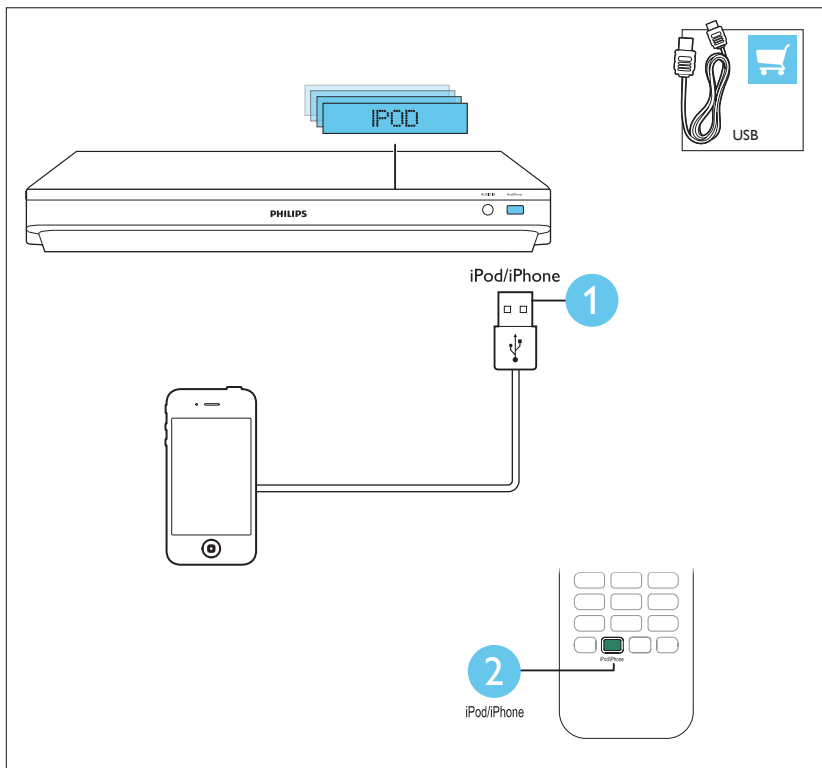
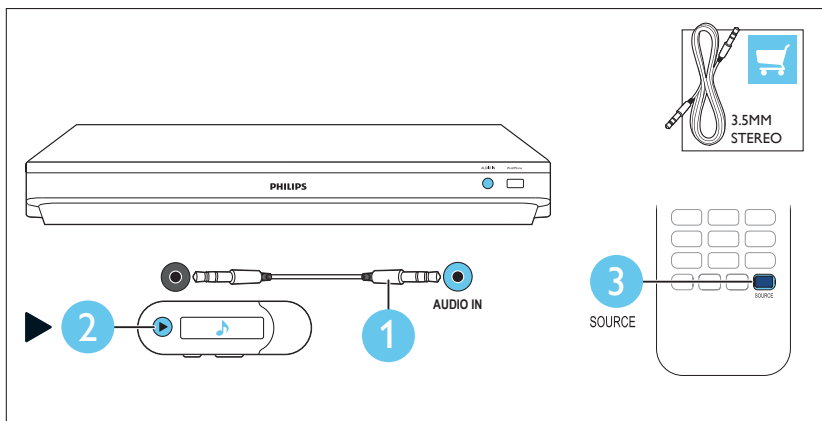
7

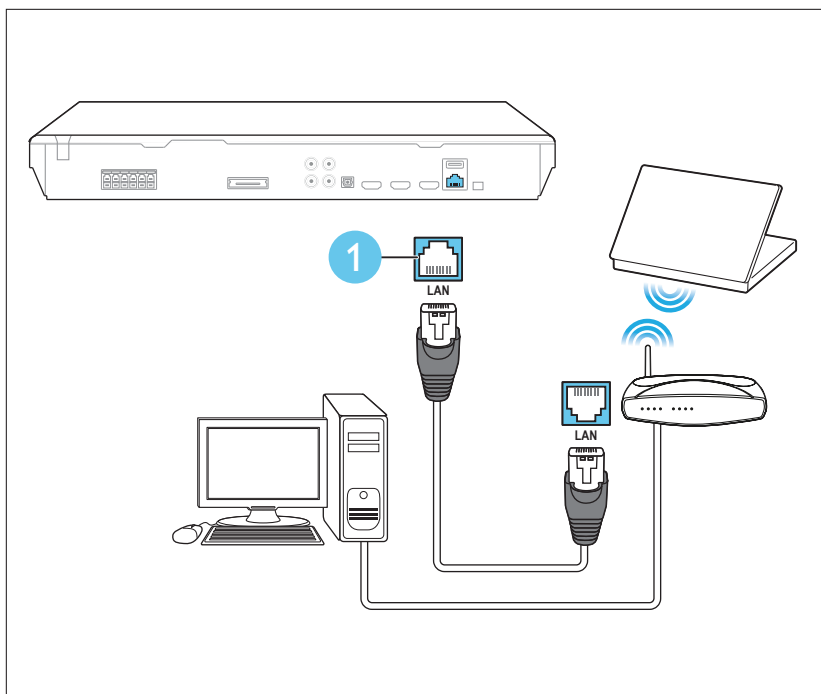
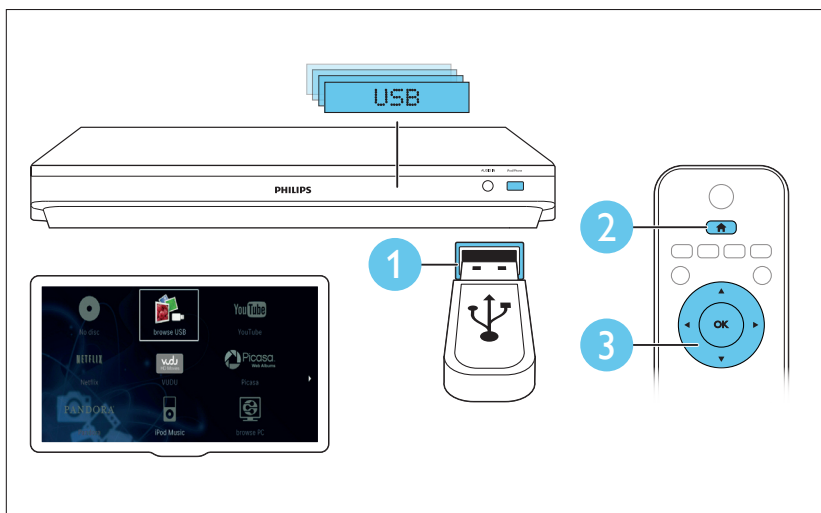
EN Use your home theater

ES Uso del sistema de Home Theater

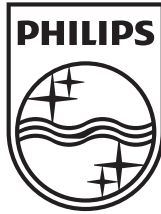
FR-CA Utilisez votre cinéma maison







P&F USA, Inc.
PO Box 2248 Alpharetta, GA 30023-2248



Specifications are subject to change without notice
© 2013 Koninklijke Philips Electronics N.V.
All rights reserved.

HTB5544D_F7_QSG_V1.0

