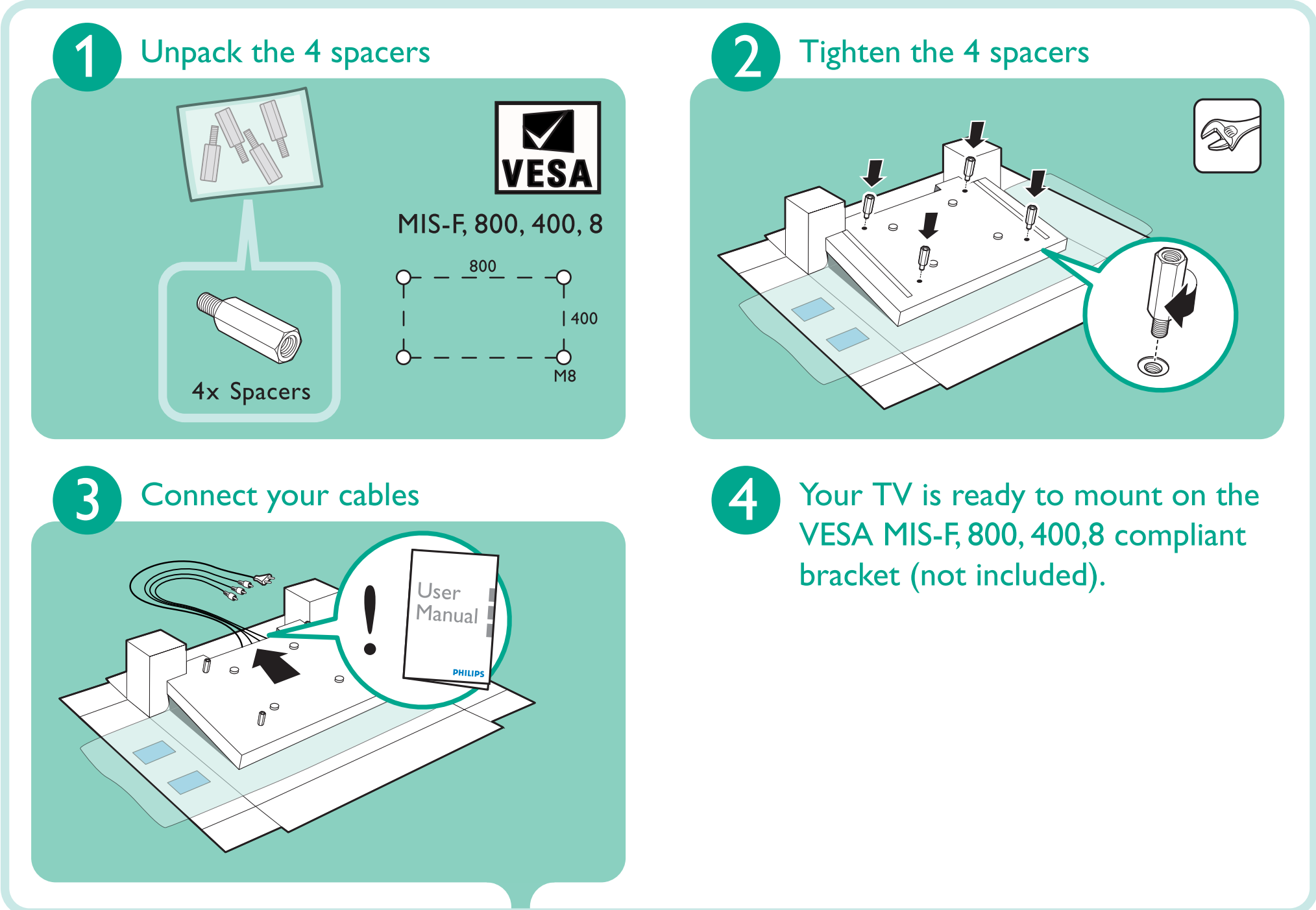
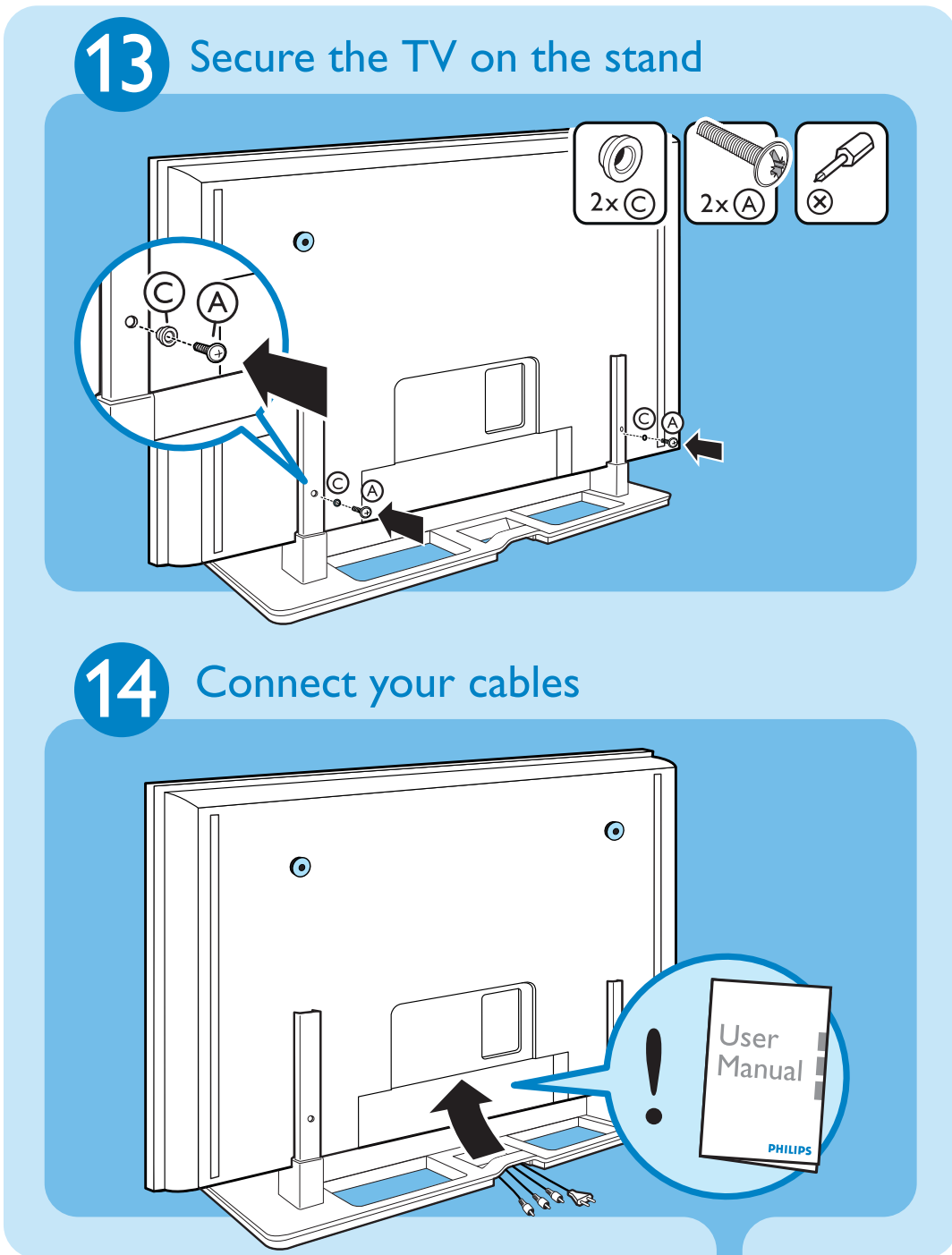


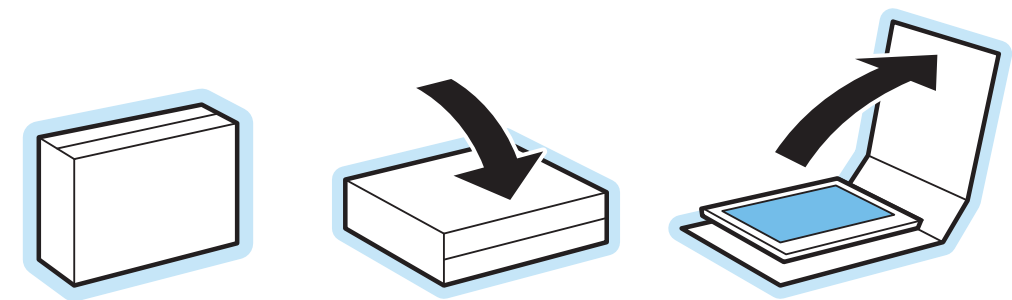
Mount your TV on a VESA™ compliant mounting kit  
VESA MIS-F, 800, 400, 8 (not included)

VESA, DPM and the VESA Mounting Compliant logo are trademarks of the Video Electronics Standards Association.

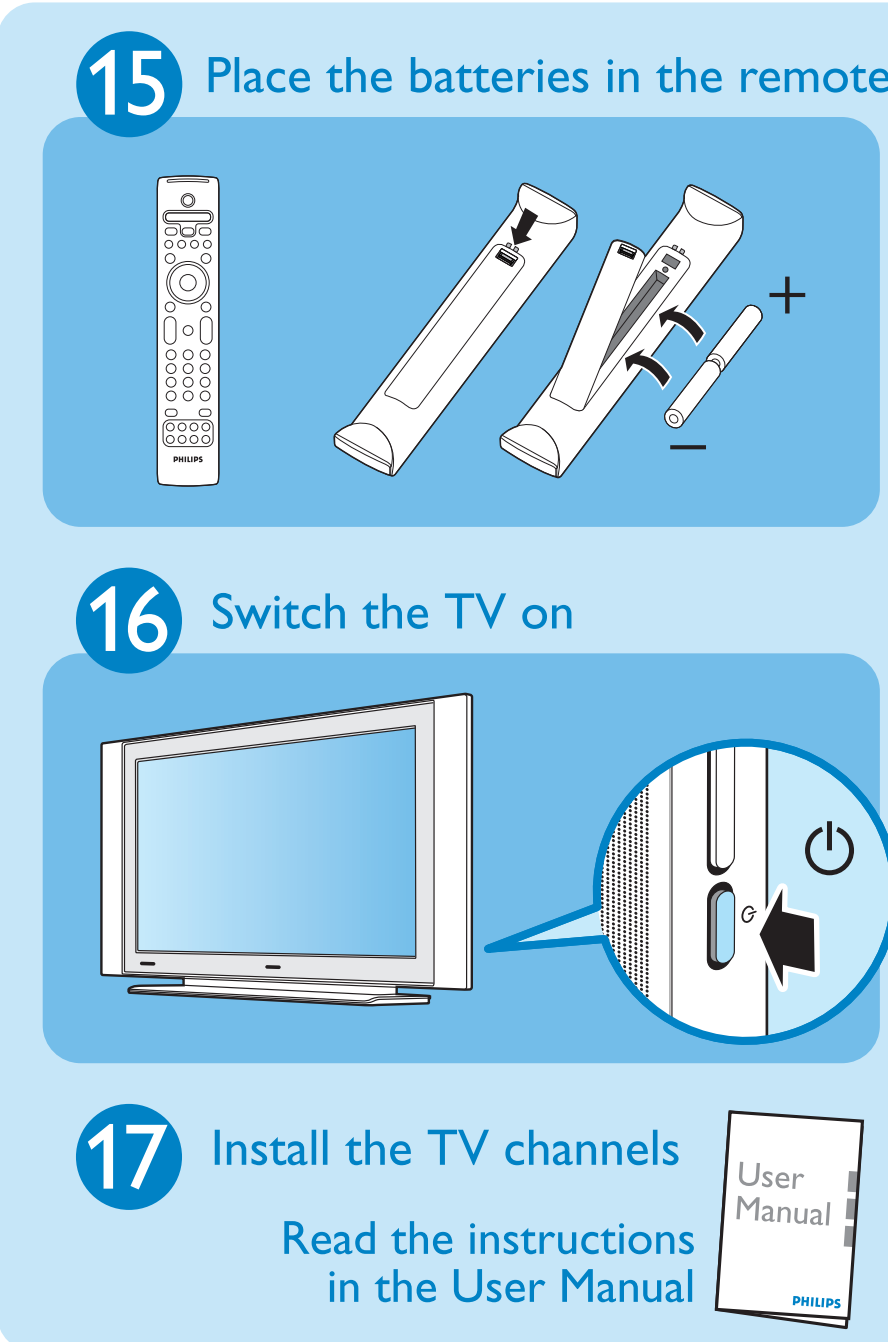
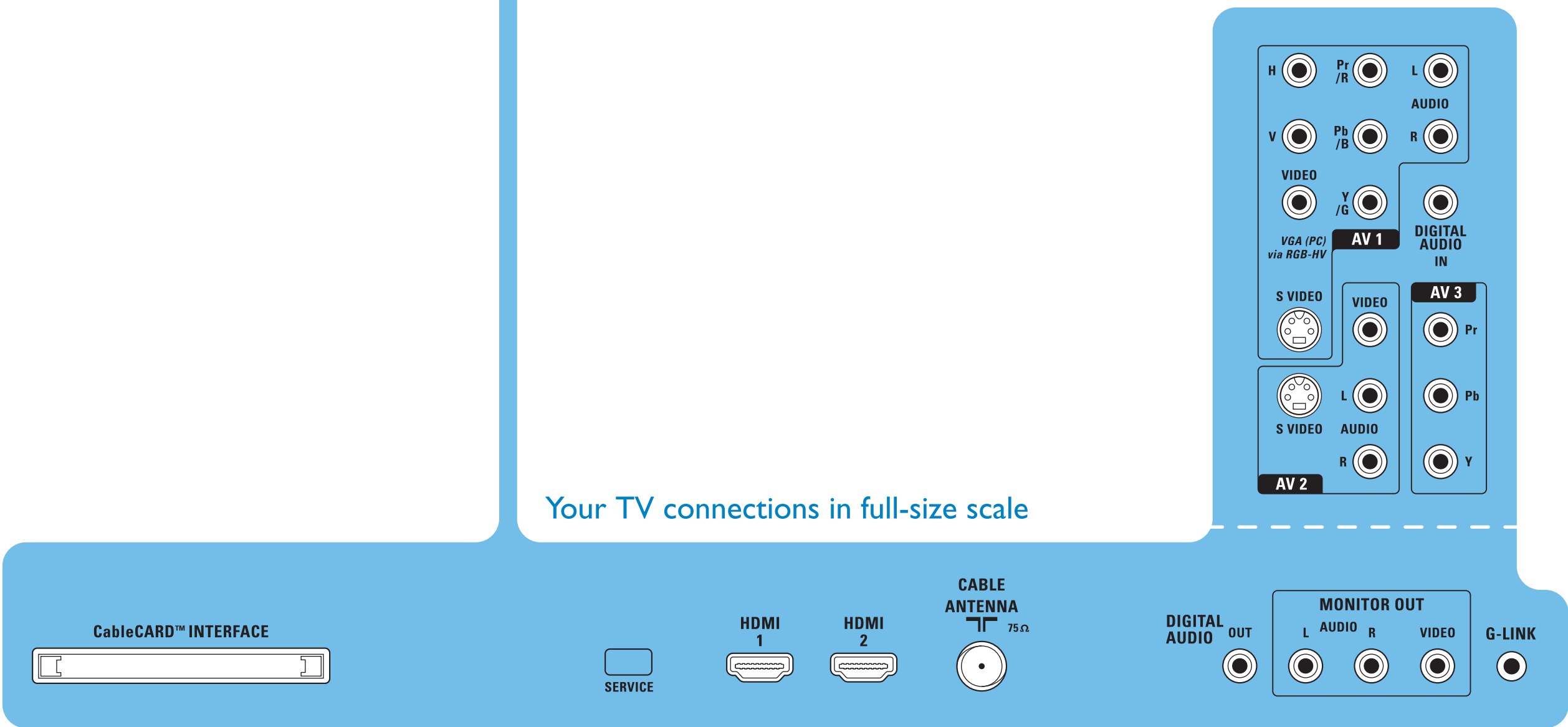
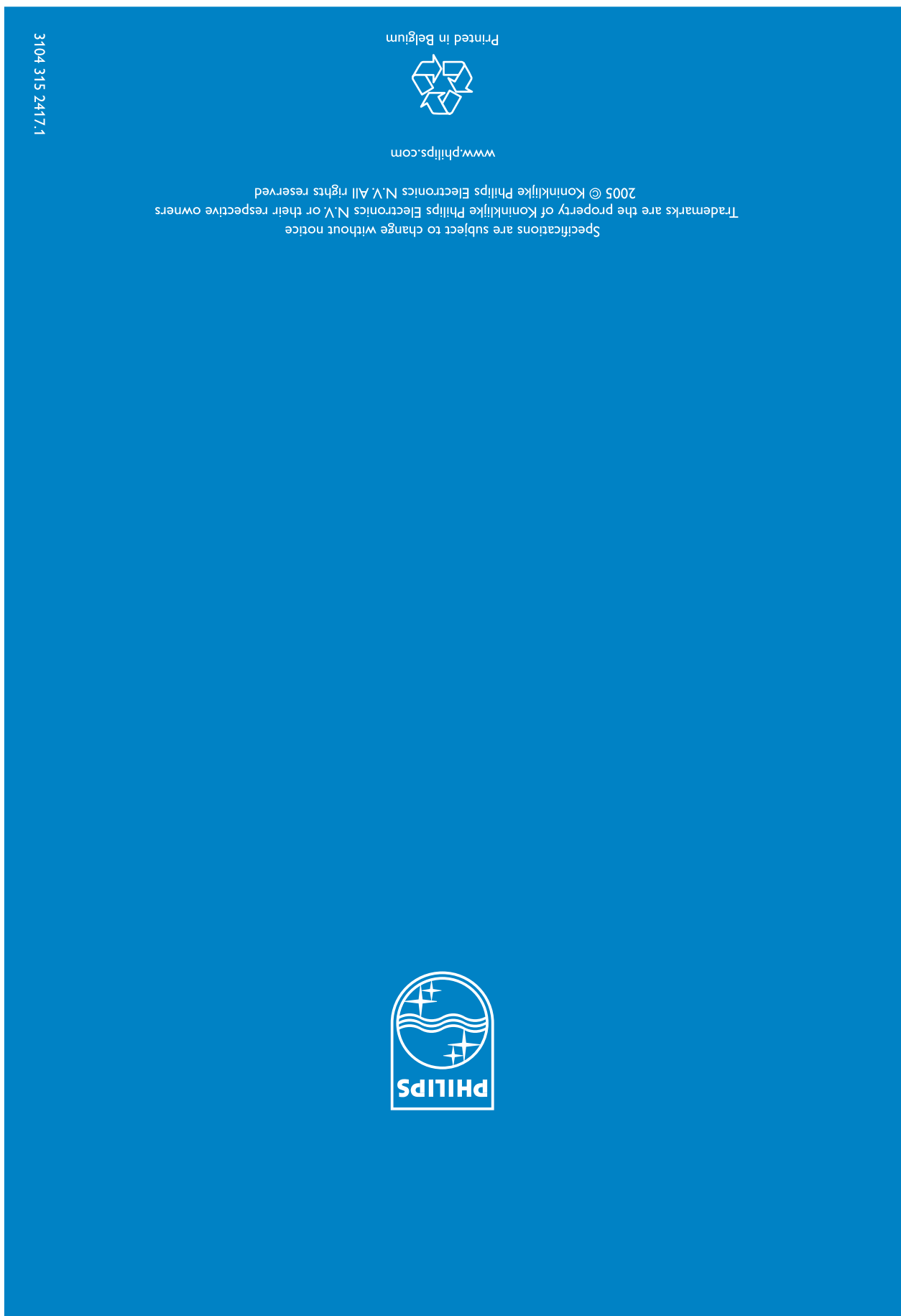


## Unpack

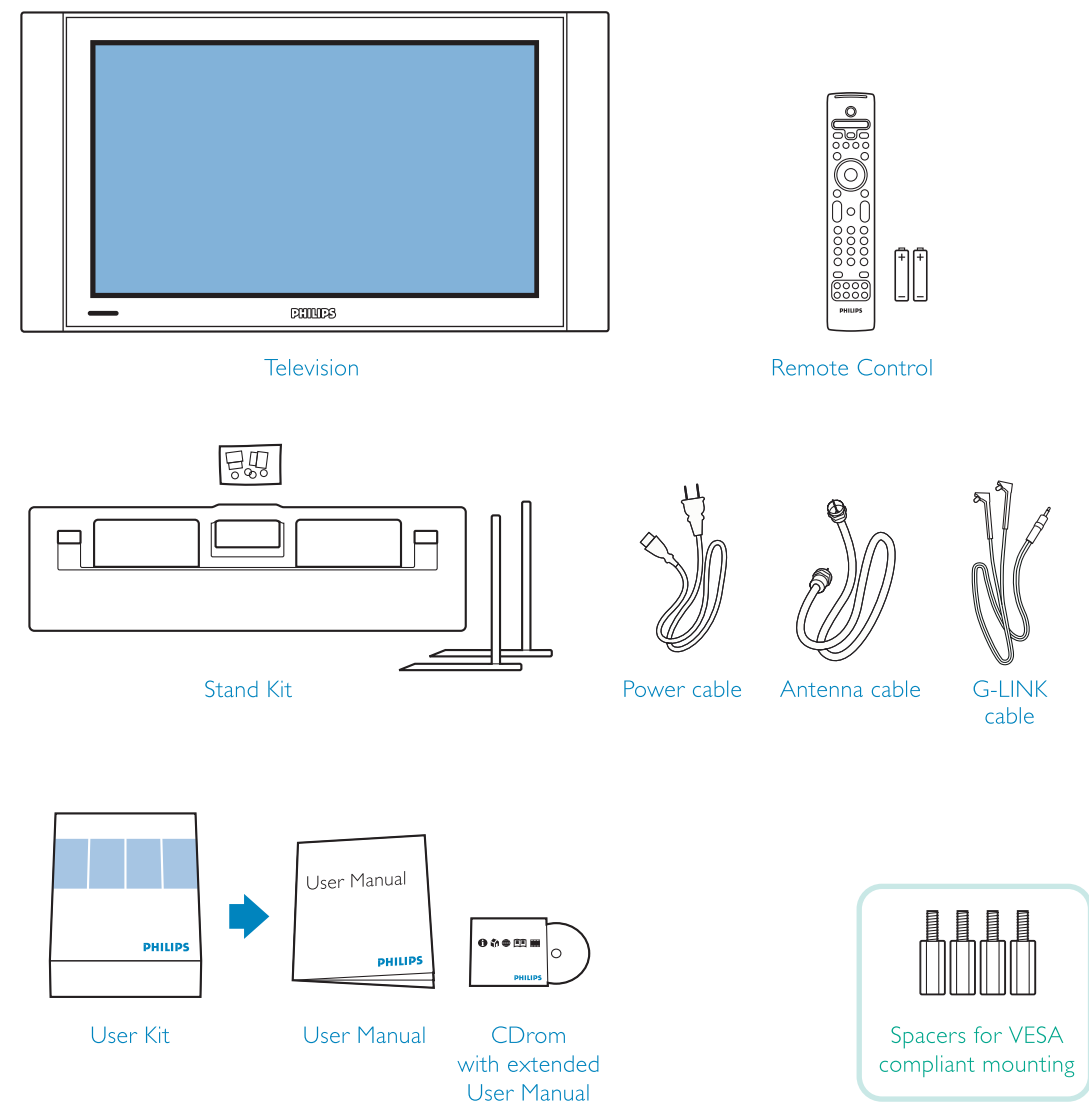
Déballer  
Desempaquetar



PHILIPS



## What's in the box



### What's else you'll need



### Need help?

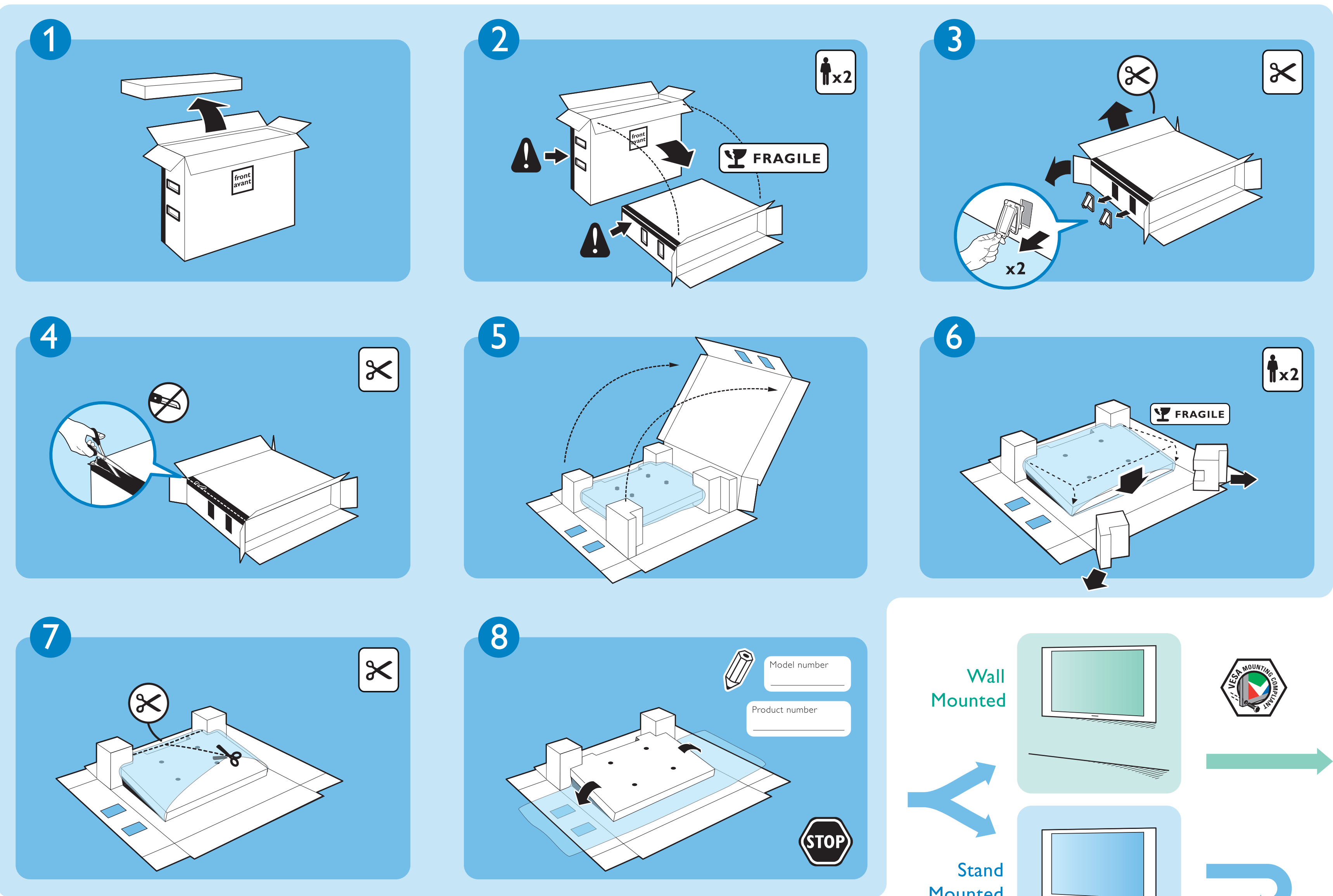
User Manual  
See the User Manual in the User Kit box that came with your TV.  
Online help : [www.p4c.philips.com](http://www.p4c.philips.com)  
Contact line :  
1 800 PHILIPS (744 5477) English speaking  
1 800 651 6162 Francophone  
Call our specialists any time.  
Please, have the Model and Product Number ready before you call.  
You can find these numbers on the packaging label or on the back of your TV.

### Register

Return your Warranty Registration Card today or register on [www.register.philips.com](http://www.register.philips.com) to ensure you receive all the benefits you're entitled to.



Take your TV out of the box



Mount your TV on the table top stand

