

Philips Matchline
widescreen flat TV

42"

plasma
Progressive Scan

42PF9946



Superior picture quality

with the latest in Plasma technology

An elegantly designed TV that you can hang on the wall is now a reality. This Flat TV delivers best-in-class picture quality for your home entertainment setup.

Vivid, natural and razor sharp images

- Enhanced-definition plasma WVGA display, 852 x 480p
- Digital Crystal Clear provides vivid cinema-like images
- Progressive Scan component video for optimised image quality
- Active Control with Light Sensor optimises picture quality

Superb sound reproduction

- Virtual Dolby Surround for a cinema-like audio experience

Multi-purpose convenience

- View PC content in a second window on your TV
- Twin page teletext allows simultaneous viewing of two pages
- 10 page Smart Text for fast access to teletext.
- PC input lets you also use your TV as a PC monitor

PHILIPS

Specifications

Picture/Display

- Aspect ratio: 16:9
- Diagonal screen size (inch): 42 inch
- Diagonal screen size (metric): 107 cm
- Panel resolution: 852 x 480p
- Brightness: 1000 cd/m²
- Picture enhancement: Digital Crystal Clear, 3/2 - 2/2 motion pull down, Comb Filter Digital, Active Control + Light sensor, Progressive scan, Widescreen Plus
- Contrast ratio (typical): 3000:1
- Display screen type: WVGA Plasma panel
- Response time (typical): 16 ms
- Viewing angle (horizontal): 160 degree
- Screen enhancement: Anti-ageing circuit, Anti-Reflection coated screen

Supported Display Resolution

- Computer formats: 640 x 480, 60, 67, 72, 75 Hz, 800 x 600, 56, 60, 72, 75 Hz, 1024 x 768, 60, 70, 75 Hz
- Video Formats: 640 x 480p - 2Fh

Tuner/Reception/Transmission

- Aerial Input: 75 ohm coaxial (IEC75)
- Tuner bands: Hyperband, S-Channel, UHF, VHF
- TV system: PAL, SECAM
- Video Playback: NTSC, SECAM, PAL

Convenience

- Ease of Installation: Autostore, PLL Digital Tuning, Plug and Play, Auto Volume Leveller
- Ease of Use: On-Screen Display, Smart Picture, Top Controls

- Screen Format Adjustments: 6 Widescreen Modes, Auto Format, Subtitle and Heading Shift
- Remote Control: Multi-functional
- Remote control type: RC4333/01
- Teletext: 10-page Smart Text
- Picture in Picture: Twin page text

Sound

- Output power (RMS): 2 x 15 W
- Sound System: Virtual Dolby Surround
- Sound Enhancement: Smart Sound

Loudspeakers

- Built-in speakers: 2

Connectivity

- Ext 1 Scart: CVBS in/out, RGB
- Ext 2 Scart: CVBS in/out, Y/C
- Other connections: Analogue audio Left/Right out, PC-in VGA + Audio L/R in, Antenna IEC75

Power

- Mains power: AC 220-240 V +/- 10%
- Ambient temperature: 5°C to 40°C
- Power consumption: 200 W
- Standby power consumption: < 4 W

Accessories

- Included accessories: Wall mounting bracket
- Optional accessories: Tabletop stand, Floor stand

Dimensions

- Product weight: 42 kg
- Weight incl. Packaging: 47 kg

Highlights

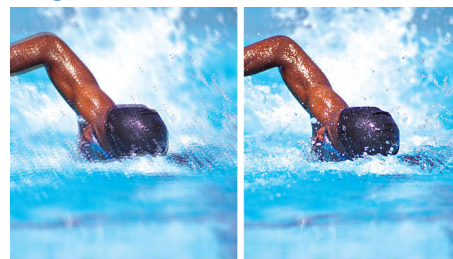
Plasma WVGA panel, 852 x 480p

This WVGA display with state-of-the-art plasma screen technology has an enhanced widescreen resolution of 852 x 480p pixels. It produces brilliant flicker-free progressive scan pictures with optimum brightness and superb colours. This vibrant and sharp image will provide you with an enhanced viewing experience.

Digital Crystal Clear

Digital Crystal Clear is a package of picture innovations that digitally adjusts and optimises picture quality to optimal contrast, colour and sharpness levels. It's like watching vivid cinema-like images.

Progressive Scan



Progressive Scan doubles the vertical resolution of the image resulting in a noticeably sharper picture. Instead of sending a field comprising the odd lines to the screen first, followed by the field with the even lines, it writes both fields at the same time. A full image is created instantaneously, using the maximum resolution. At such a speed, your eye perceives a sharper picture with no line structure.

Active Control + Light Sensor

Active Control is a unique and intelligent way of optimising picture quality by measuring and analysing the incoming signal to automatically adjust picture quality settings. Active Control with Light Sensor uses a sensor to adjust the picture brightness depending on the room lighting conditions.

Virtual Dolby Surround

Virtual Dolby Surround is a processing technology for enhancing surround sound effects. It will create the sensation of Dolby Pro Logic without the necessity of additional rear speakers. You become totally immersed in your television experience.

Picture in Graphics

Picture-in-Graphics is a small window in the main picture, allowing you to watch data/graphics on your main TV screen. It provides the ability to simultaneously watch data/graphics and the TV.

Twin page teletext

Twin page teletext allows you to simultaneously view two teletext pages side by side

10-page Smart Text

Teletext is a common system transmitted by most broadcasters. The 10-page smart text feature gives you fast access to information when changing pages.

PC input

With PC input you can connect your TV to a computer and use the TV as a PC monitor.

