

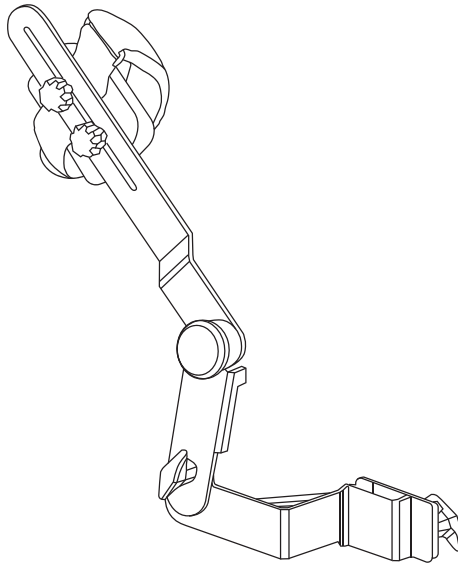
**PHILIPS**

**ReCare**

Lower extremity  
bi-lateral stabilization set

2.2

# Physical therapy **solutions**



**PTE7020MA**

Register your product and get support at  
[www.philips.com/welcome](http://www.philips.com/welcome)

# Contents

---

Bi-lateral calf support assembly	3
----------------------------------	---

---

Set-up and use of the bi-lateral calf support	4
---	---

---

Exploded view drawing	6
-----------------------	---

---

Parts list	7
------------	---

---

# Bi-lateral calf support assembly

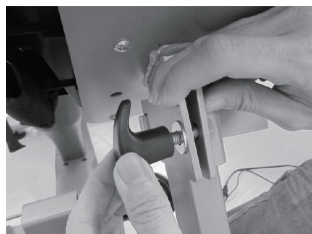
## **Step 1.**

Install the Calf support bracket (Left bracket is part number 1, Right is #2) to the outside of the pedal support tube. Push the bracket all the way to the top of the tube as shown.



## **Step 2.**

Install the securing plate (#7) to the bracket by hooking it onto the tab. Place a flat washer (#18) onto the T-handle knob (#10) and thread the knob through the plate and into the bracket.



# Set-up and use of the bi-lateral calf support

Place the patient's foot on the foot pedal and secure with the straps if needed. Align the Calf support pivot point with the patient's ankle. If it is not already aligned loosen the T-Handle knob and slide the adjustment plate up or down to align then tighten the knob securely.



Adjust the Calf support pad to the desired position by loosening the two locking knobs and sliding the pad into place and tightening the knobs securely.



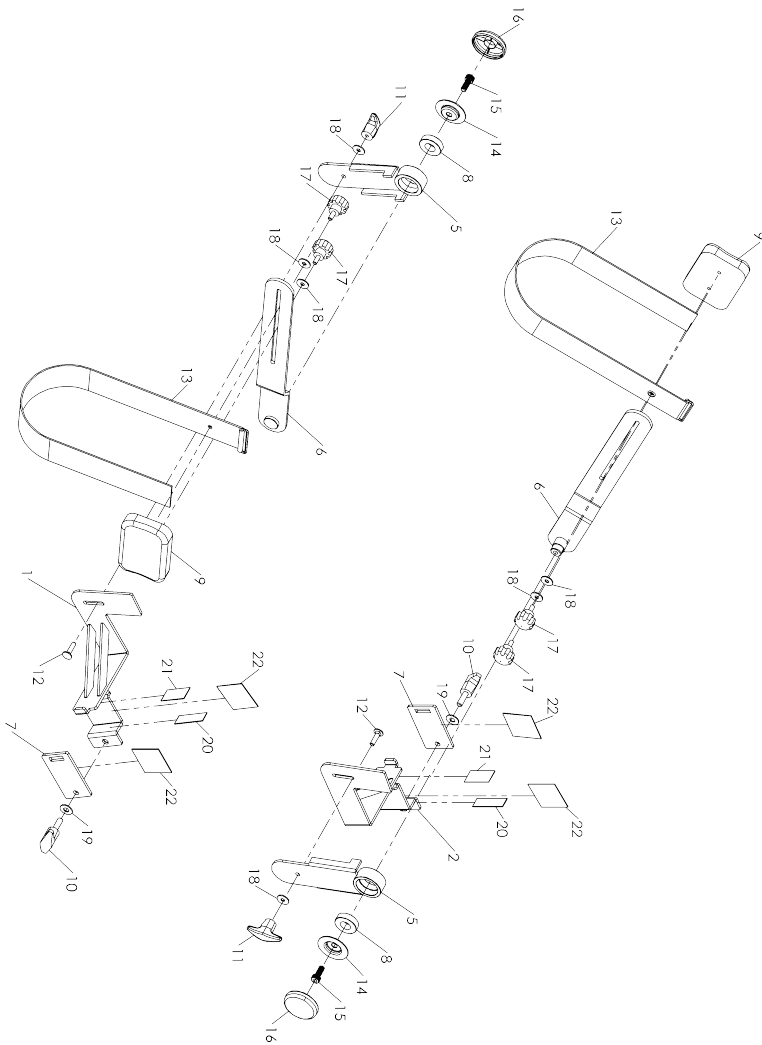
Secure the patient's calf to the support pad using the Velcro strap.



The Bi-lateral calf support is now ready for use.



# Exploded view drawing



# Parts list

Item	Description	Qty
1	Left bracket (bottom)	1
2	Right bracket (bottom)	1
5	Adjustment bracket	1
6	Articulating bracket	1
7	Securing plate	1
8	6003_bearing	1
9	Calf support pads	1
10	T-handle knob	1
11	Threaded t-handle knob	1
12	1/4" carriage bolt	1
13	Velcro strap	1
14	Cup washer	2
15	M8 socket head bolt	4
16	End cap	1
17	Calf pad locking knobs	1
18	1/4" flat washer	2
19	8.7mm flat washer	2
20	17 x 55mm foam tape	2
21	23 x 23 x 45mm foam tape	1
22	49 x 49mm foam tape	1

