

**PHILIPS**

**EasyKey**

**6100**

Push-pull  
Smart Door Lock

# User manual

Register products and get  
support on the following sites

[www.philips.com/support](http://www.philips.com/support)



# Contents

<b>1 Important information</b>	<b>02</b>	<b>5 How to use your EasyKey</b>	<b>15</b>
Safety		<b>Unlock</b>	
Caution		<b>Unlock from outside</b>	
Disposal of used products and batteries		-With a PIN code	
		-With a fingerprint	
		-With a card	
<b>2 EasyKey Installation</b>	<b>03</b>	<b>Unlock from inside</b>	
Packing list		-With handle	
Exploded views		-With Close button	
Pre-installation instructions		<b>Lock</b>	
Installation steps		-Auto/Manual modes	
		-Lock from outside	
<b>3 Get to know your EasyKey</b>	<b>08</b>	-Lock from inside	
Outside escutcheon		<b>Inside deadlock</b>	
Inside escutcheon		<b>Mechanical key opening</b>	
<b>4 How to set up your EasyKey</b>	<b>09</b>	<b>6 Other functions</b>	<b>18</b>
-Pre-setup instructions		Restore to default settings	
-Modify master PIN code		Mute function	
-User settings		Outside forced lock	
-Delete a user record			
-System settings		<b>7 The use &amp; meanings of the indicators</b>	<b>19</b>
-Extended functions		Lock status indicator	
-System query		Low battery voltage indicator	
-Local query		Outside forced lock indicator	
		Mute mode indicator	
		Inside deadlock indicator	
		System lock indicator	
		[CLOSE] button indicator	
		<b>8 Troubleshooting</b>	<b>21</b>
		Alarm types and alarm modes	
		How to use an emergency power	
		How to replace batteries	

# 1 Important information

## Safety

◆Before using Philips EasyKey, please read and understand all instructions. Damage caused by non-compliance with the instructions will not be covered by warranty.

◆Use only the manufacturer-specified accessories/components.

◆Use only the alkaline batteries the product is equipped with, or use the same specification type of alkaline batteries.

◆Do not forcibly disassemble this product to avoid triggering an alarm or damaging the product.

◆Do not scrape the fingerprint sensor with sharp objects, otherwise it may cause permanent damage.

◆Do not expose products to environments where there is water leakage or splashing.

◆Do not expose the product to corrosive substances to prevent damaging the protective cover.

◆Do not hang objects on the handle, in case it might affect the normal use of the lock.

◆Please clean the product with a soft cloth.

◆Do not remove the battery during setting up and operating.

◆Please let a professional technician to install the door lock and follow the installation guidelines provided. Do not disassemble the lock by yourself. Keep the relevant sealed stickers properly. Do not easily disclose the password information.

◆Please modify the default master PIN code immediately after finishing installing and debugging, and keep the mechanical key properly.

◆Please replace all the batteries immediately if there is a low battery alarm. Please make sure to correctly match the poles (+/-) when installing the batteries.

## Caution

◆Do not place the battery near fire sources to avoid explosion.

◆Do not use any emergency power supply that does not meet the safety requirements to power up the product.

◆Do not connect the 2 poles of the batteries with metals to avoid short circuit which may lead to an explosion.

◆Please make sure any component replacement is executed by Philips, Philips authorized service center or professional technicians.

◆Do not use accessories or parts that have been produced by other manufacturers or have not been specifically recommended by Philips. The use of such accessories and parts may void your warranty.

## Disposal of used products and batteries

◆You can have your locks reclaimed at Philips authorized service centers. You will receive corresponding compensation if your products meet our conditions.

◆Please familiarize yourself with the local electronic product collection system.

◆Please follow local regulations and do not discard used products into ordinary household waste.

◆Proper disposal of used products can help to avoid potential negative impacts on the environment and human health.

◆Batteries must not be disposed of with ordinary household waste.

◆Please familiarize yourself with the local regulations on batteries classification recycling. Disposing of batteries properly can help avoid a negative impact on the environment and human health.

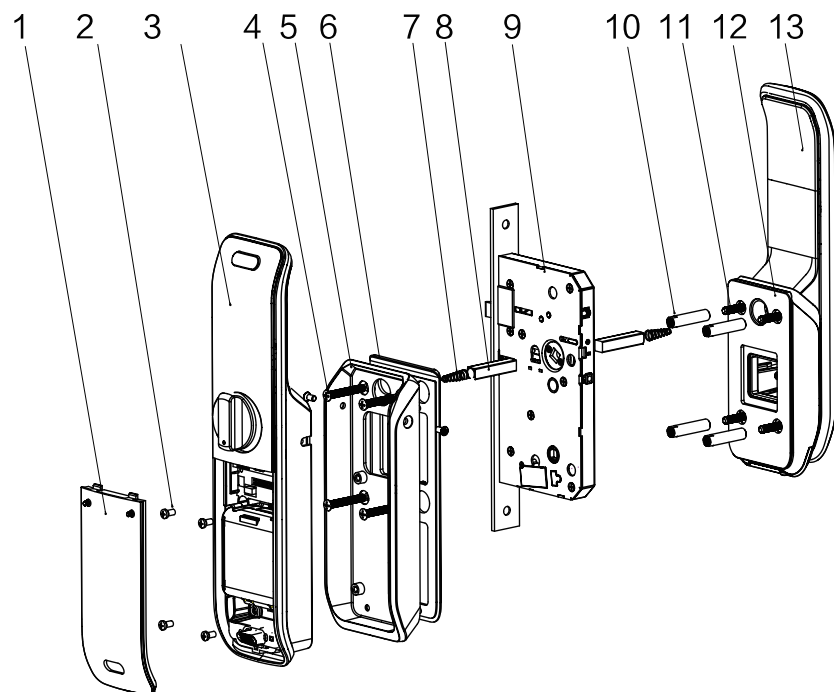
# 2 EasyKey Installation

## Packing List

This packing list is for reference only. Please refer to the actual packing contents.



## Exploded Views



1. Battery cover (x1)
2. Inside escutcheon anchor screw (x6)
3. Inside escutcheon component (x1)
4. Mounting plate anchor screw (x4)
5. Mounting plate (x1)

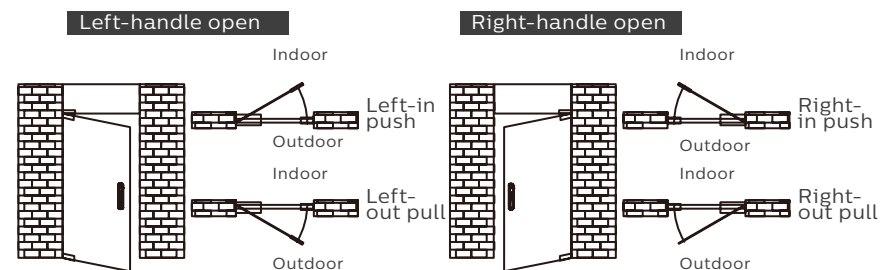
6. Inside escutcheon silicone pad (x1)
7. Square shaft compressed spring (x2)
8. Square shaft (x2)
9. Mortise (x1)
10. Connecting screw tube (x4)

11. Grub screw (x4)
12. Outside escutcheon silicone pad (x1)
13. Outside escutcheon component (x1)

## Pre-installation instructions

### Step 1 | Confirm the door opening direction

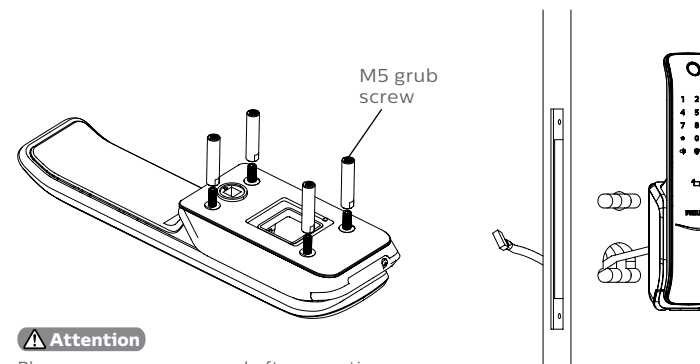
This product can be installed on doors of 4 directions: left-out pull, right-in push, right-out pull and left-in push.



## Installation steps

The following installation steps apply to right-open doors. For left-open doors, please read the chapter [Pre-installation instructions] carefully and make needed adjustments.

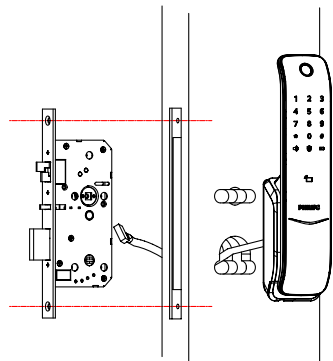
- 1 Install the M5 grub screws and screw tubes into the outside escutcheon.
- 2 Use the drilling template to drill the needed holes in the door. Pass the connecting cable of the outside escutcheon through the door hole.



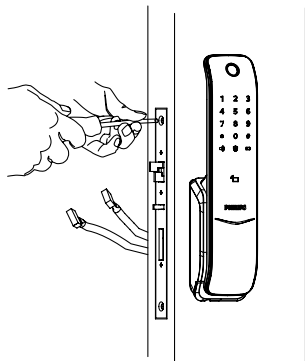
### ⚠ Attention

Please use proper square shaft, connecting screw tube and anchor screw tubes according to your door's thickness.

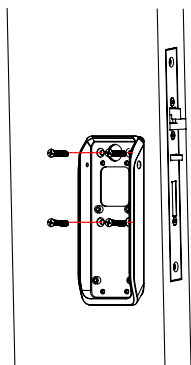
- ③ Put the mortise in the door and align it with the screw tubes in the outside escutcheon.



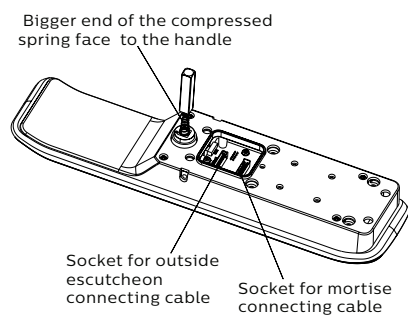
- ④ Tighten the anchor screws in the mortise.



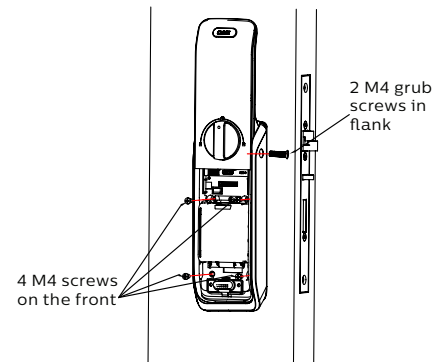
- ⑤ Put the mounting plate against the inside of the door and fix it with the four M5 chamber head screws.



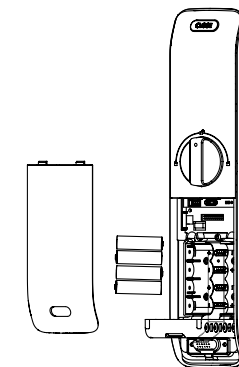
- ⑥ Put the compressed spring and then the square shaft in the inside escutcheon accordingly.



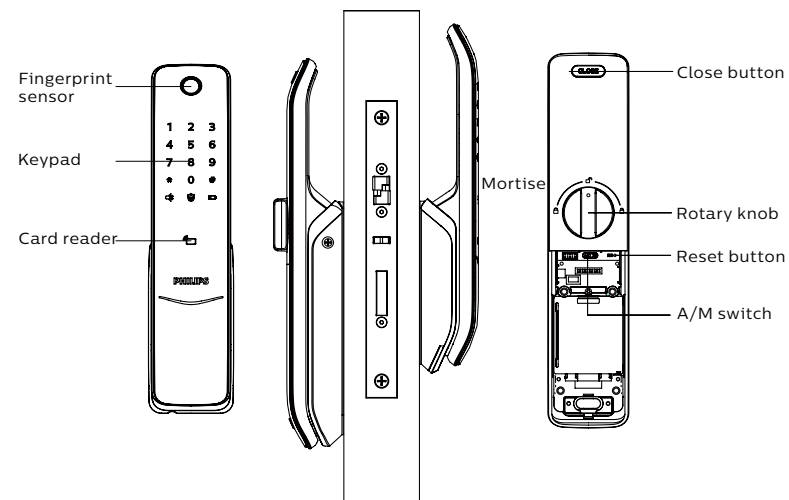
- ⑦ Insert the connecting cables of outside escutcheon and motor into the corresponding sockets in the inside escutcheon. Align the square shaft of the inside escutcheon to the rotary hole in the mortise and insert it, then make the inside escutcheon close to the inside of the door.



- ⑧ Keep the multicolor ribbon under the batteries while putting the first set of battery into the cabin, which could make battery removal easier for next battery replacement. After all 8 batteries are in place, install the battery cover and the striker.

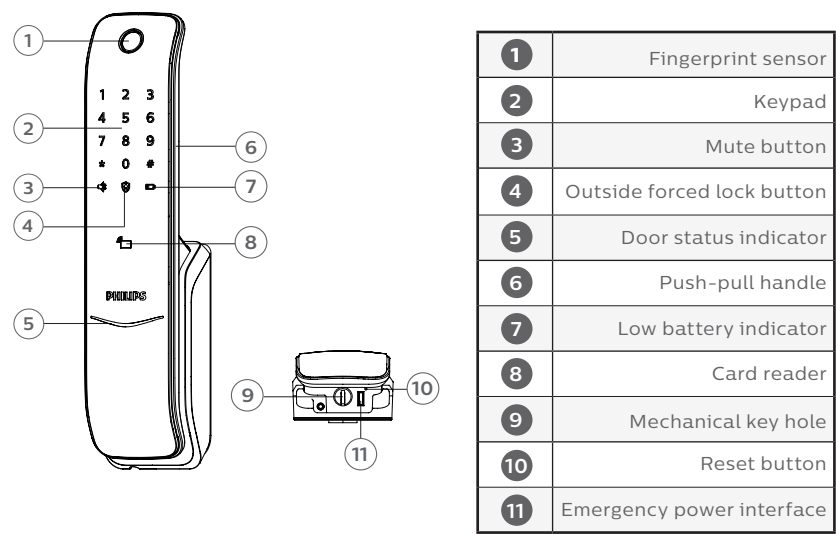


- ⑨ After all the above is finished, please check if every component is well connected and if the lock works normally.

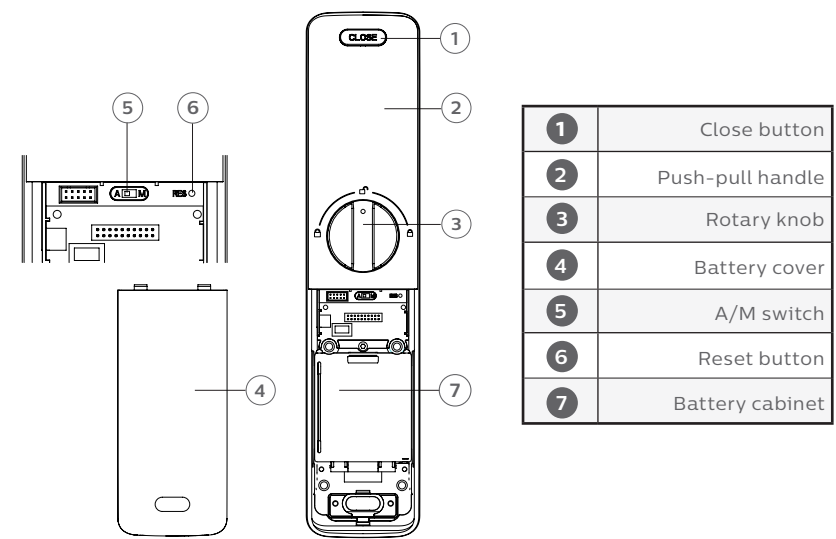


### 3 Get to know your EasyKey

#### Outside escutcheon



#### Inside escutcheon



### 4 How to set up your EasyKey

#### Pre-setup Instructions

◆There are 2 modes in the EasyKey: General mode and dual verification mode.

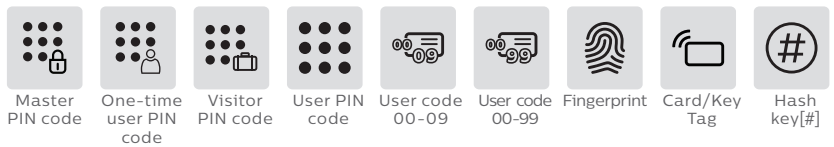
General mode	Dual verification mode
Unlock with any registered identity information	Unlock with any two of the identity information among PIN code, card/key tag and fingerprint

◆User Code  
You can delete a single user information by its user code without having to delete everything.

◆You can record the user information in the following table for future query:

Code	Name	Fingerprint	PIN Code	Key Tag
00				
01				
02				
03				
04				
05				
06				
07				
08				
09				

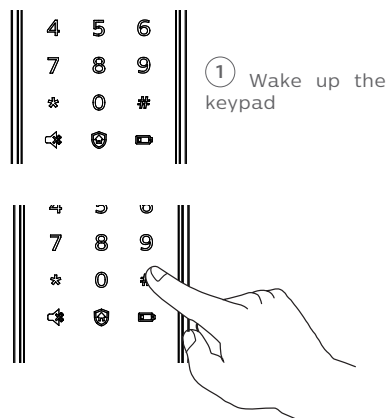
◆Icon annotation



#### ⚠ Attention

- 1.Before you enter master mode, please make sure the door is opened
- 2.Press [\*] key to return to the previous menu.
3. The default PIN code is 12345678.

## ◆How to enter master mode



- ② Press [#] before inputting any other numbers. After hearing a voice prompt of "Enter master PIN code", enter your master PIN code and confirm with [#]. Then you are in master mode.

### Modify master PIN code



Press [#], enter master PIN code and confirm with [#].



Press [1] to modify master PIN code.



Enter the new master PIN code and confirm with [#]. Re-enter the new master PIN code and confirm with [#]. After hearing a voice prompt of "Succeeded", press [\*] several times until you exit master mode.

## User settings

### Register a user PIN code



Press [#], enter master PIN code and confirm with [#].



Press [2] to enter user registration, then press [1] to register a new user PIN code, which will be automatically numbered and announced by the system.



Enter a user PIN code of 6 to 12 digits and confirm with [#]. Then re-enter the user PIN code and confirm with [#]. After hearing a voice prompt of "Succeeded", press [\*] several times until you exit master mode.

### Register a one-time user PIN code



Press [#], enter master PIN code and confirm with [#].



Press [2] to enter user settings, then press [2] again to enter one-time PIN code registration.



Enter a one-time user PIN code of 6 to 12 digits and confirm with [#]. Re-enter and confirm with [#]. After hearing a voice prompt of "Succeeded", press [\*] several times until you exit master mode.

### Register a fingerprint



Press [#], enter master PIN code and confirm with [#].



Press [2] to enter user settings, then press [3] to enter fingerprint registration. The system will automatically number the fingerprint and broadcast the number.



Place your finger against the sensor. After hearing a voice prompt of "Take away your finger and enroll again", please take away your finger and re-place it against the sensor. After hearing a voice prompt of "Succeeded", press [\*] several times until you exit master mode.

#### ⚠ Attention

The fingerprint needs to be collected for at least 8 times.

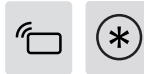
### Register a card



Press [#], enter master PIN code and confirm with [#].



Press [2] to enter user registration, then press [4] to enter card registration. The system will automatically number the card and broadcast the number.



Hold the card close to the card reader until you hear a beep. After hearing a voice prompt of "Succeeded", press [\*] several times until you exit master mode.

## User Information Deletion

### Delete a user PIN code



Press [#], enter master PIN code and confirm with [#].



Press [3] to enter user deletion, then press [1] to enter user PIN code deletion. Press [1] again to delete a single user PIN code.



Enter the 2-digit [user code] (00-09) of the user PIN code that is to be deleted and confirm with [#]. After hearing a voice prompt of "Succeeded", press [\*] several times until you exit master mode.

### Delete all user PIN codes



Press [#], enter master PIN code and confirm with [#].



Press [3] to enter user deletion, then press [1] to enter user PIN code deletion. Press [2] to delete all user PIN codes. After hearing a voice prompt of "Succeeded", press [\*] several times until you exit master mode.

### Delete a one-time user PIN code



Press [#], enter master PIN code and confirm with [#].



Press [3] to enter user deletion, then press [2] to enter one-time user PIN code deletion.



After hearing a voice prompt of "Succeeded", press [\*] several times until you exit master mode.

### Delete a fingerprint



Press [#], enter master PIN code and confirm with [#].



Press [3] to enter user deletion, then press [3] again to enter fingerprint deletion. Press [1] to enter single fingerprint deletion.



Enter the 2-digit [user code] (00-99) of the fingerprint that is to be deleted and confirm with [#]. After hearing a voice prompt of "Succeeded", press [\*] several times until you exit master mode.

### Delete all fingerprints



Press [#], enter master PIN code and confirm with [#].



Press [3] to enter user deletion, then press [3] again to enter fingerprint deletion. Press [2] to delete all fingerprints. After hearing a voice prompt of "Succeeded", press [\*] several times until you exit master mode.

### Delete a card



Press [#], enter master PIN code and confirm with [#].



Press [3] to enter user deletion, then press [4] to enter card deletion. Press [1] to delete a single card. Press [\*] several times until you exit master mode.

### Delete all cards

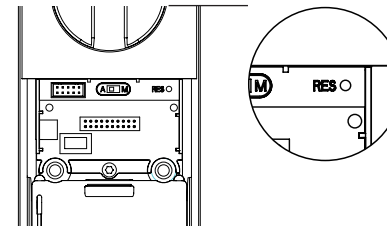


Press [#], enter master PIN code and confirm with [#].



Press [3] to enter user deletion, then press [4] to enter card deletion. Press [2] to delete all cards. After hearing a voice prompt of "Succeeded", press [\*] several times until you exit master mode.

### System initialization



Take out the battery cover and long press the [RES] button with a sharp object, until you hear a voice prompt of "Restored to factory settings". All user information will be emptied.

## System settings

### Language Settings



Press [#], enter master PIN code and confirm with [#].



Press [4] to enter system settings, then press [1] to enter language settings.



Adjust the language as needed: For Chinese, press [1]; for English, press [2]. After hearing a voice prompt of "Succeeded", press [\*] several times until you exit master mode.

#### ⚠ Attention

The default language is English.

### Volume settings



Press [#], enter master PIN code and confirm with [#].



Press [4] to enter system settings, then press [2] to enter volume settings.



Adjust the volume as needed: For higher volume, press [1]; for lower volume, press [2]; for mute mode, press [3]. After hearing a voice prompt of "Succeeded", press [\*] several times until you exit master mode.

#### ⚠ Attention

The default volume is higher volume.

### Switch to dual verification mode



Press [#], enter master PIN code and confirm with [#].



Press [4] to enter system settings, then press [3] to choose verification method.



For single verification, press [1]; for dual verification, press [2]. After hearing a voice prompt of "Succeeded", press [\*] several times until you exit master mode.

#### ⚠ Attention

Before using dual verification, please make sure you have registered more than 2 types of user information.



## Extended Functions



Press [#], enter master PIN code and confirm with [#].

5

Press [5] to enter extended functions.

1 or 2

To join a network, press [1]. To exit a network, press [2]. Before setting up the extended functions, please download and open the Philips EasyKey on your mobile phone.

### ⚠ Attention

The extended functions are optional.

## System Query

### Security code query



Press [#], enter master PIN code and confirm with [#].

6 1

Press [6] to enter system query, then press [1] to get the serial number (security code) automatically broadcasted.

### ⚠ Attention

Directly enter 400# to start system query.

## Local Query



Press [#], enter master PIN code and confirm with [#].

6 2

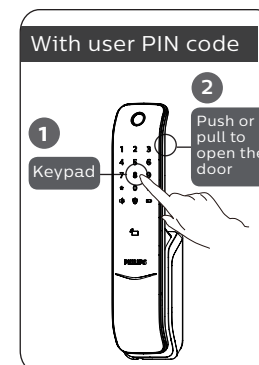
Press [6] to enter system query, then press [2] to get the software version, and the system will automatically broadcast the software version.

### ⚠ Attention

Directly enter 114# to start Local query.

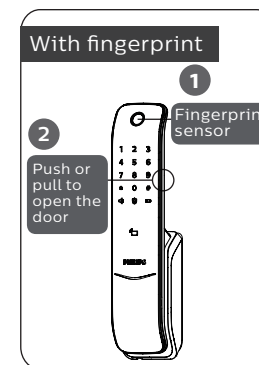
## 5 How to use your EasyKey

### Unlock | Unlock from outside



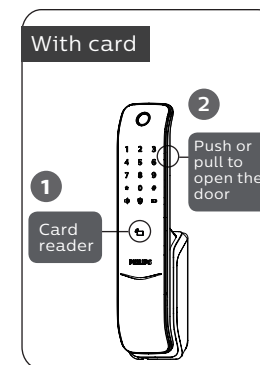
① Touch the keypad and light up the buttons. Enter the registered user PIN code and confirm with [#].

② After hearing a voice prompt of "Door opened", push or pull the handle to open the door.



① Place your registered finger properly against the sensor.

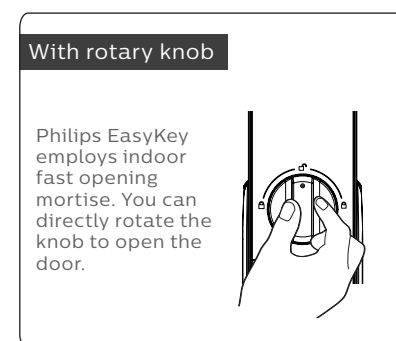
② After hearing a voice prompt of "Door opened", push or pull the handle to open the door.



① Place your registered card on the card reader.

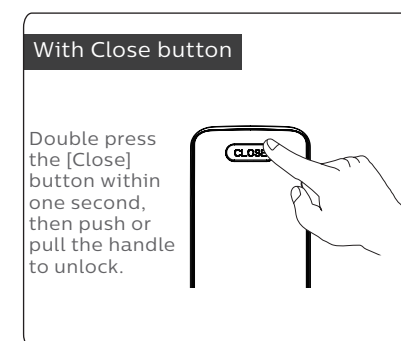
② After hearing a voice prompt of "Door opened", push or pull the handle to open the door.

### Unlock | Opening from inside

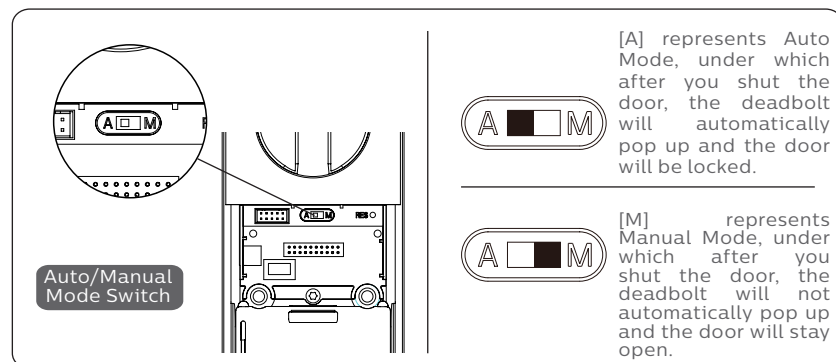


### ⚠ Attention

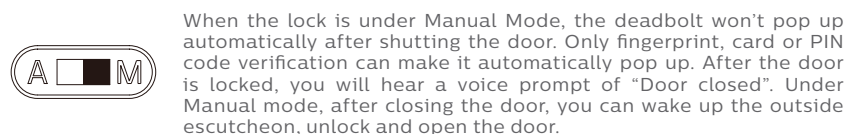
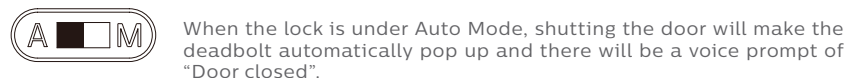
When you want to open the door from inside, please make sure the rotary knob is moved to the proper position.



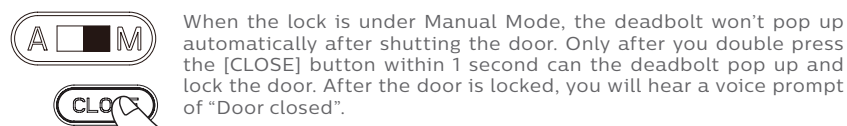
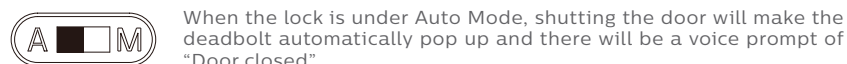
## Lock | Auto/Manual modes



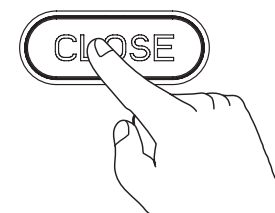
### Lock from outside



### Lock from inside



## Inside Deadlock



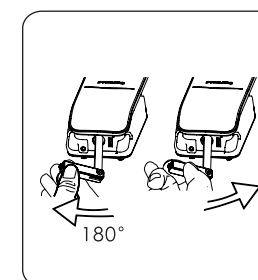
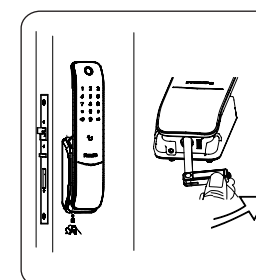
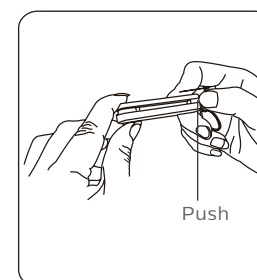
After the door is locked, long press the [CLOSE] button. The button will flash once in red and there will be a voice prompt of "Inside deadlock enabled".

### ⚠ Attention

Under inside deadlock mode, all functions of the outside escutcheon will be locked. If you try to wake up the system manually, the keypad area will display the combination of "15937(X)" and there will be a voice prompt of "Inside deadlock enabled" reminding you that the door has been dead locked from inside.

Under deadlock mode, all operations of the outside escutcheon are disabled. Master PIN code verification or mechanical key opening is required to release the door from deadlock mode.

## Mechanical key opening



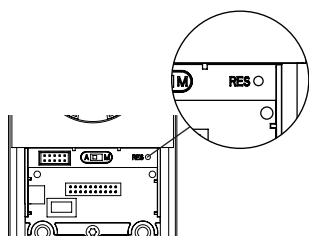
- 1 Cut the box and take out the key shell. Push the cover aside and reveal the key itself.
- 2 Undo the screws on the bottom of the outside escutcheon and take out the metal protective cover. Insert the key into the mechanical keyhole and keep the key and the key shell vertical to each other. Rotate the key shell 90° towards the handle until it close fit in the door surface.
- 3 Rotate the key shell downwards for 180° to make the key shell parallel to the ground. Then rotate the key shell horizontally towards the handle to unlock the door.

### ⚠ Attention

We suggest that you do not use the mechanical key for daily unlocking. Use the key for emergencies, for example when the battery is dead, when you forget the PIN code, or when the system fails to work properly.

## 6 Other functions

### Restore to default settings



**Function:**  
Empty all user information and restore to default settings.

**How to use:**  
Long press the [RES] button with a sharp object, and all the user information will be emptied. The lock will be restored to default settings.

### Mute Mode



Mute button

**Function:**  
Use one button to mute function to turn off the voice guide. Applicable to the scenes where you don't want to disturb your family.

**How to use:**  
**Mute:** When the system is awake, long press the [Mute] button for 2 seconds to enter one-time mute mode. The button will glow green.

**Unmute:** When the system is awake, long press the [Mute] button for 2 seconds to restore the voice guide. The button will glow white.

### Outside forced lock function



Outside forced lock button

**Function:**  
Unlocking from inside will trigger an alarm.

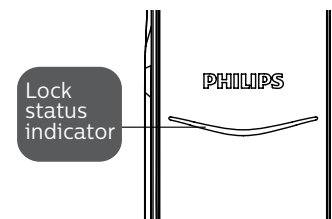
**How to use:**  
After the door is successfully locked, long press the functional button for 2 seconds to enter the outside forced lock mode.

#### ⚠ Attention

Enabling the outside forced lock function will not affect unlocking from outside.

## 7 The use & meanings of the indicators

### Lock status indicator



**Colors of the light and the corresponding meanings:**

**Blue:** After the system wakes up, the light will glow blue, indicating that you can operate the lock.

**Green:** After the door is unlocked, the light will glow green, indicating that the door has been opened.

**Red:** After the door is locked, the light will glow red, indicating that the door has been closed.

### Low battery indicator

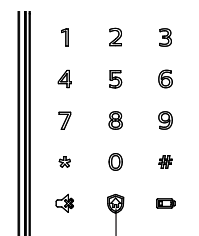


Low battery indicator

**Colors of the light and the corresponding meanings:**

**Red:** After waking up, the system will run an automatic examination on the battery voltage. If the voltage is too low, the light will flash in red and there will be a voice prompt of "Low battery voltage. Please replace all batteries".

### Outside forced lock indicator



Outside forced lock indicator

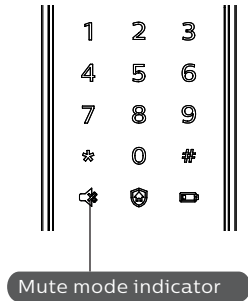
**Colors of the light and the corresponding meanings:**

**White:**

1. When the door is locked, the light will light up alone, indicating that you can enable the outside forced lock function.

2. If you have enabled the outside forced lock function, the light will light up after the system wakes up, indicating this function is in use.

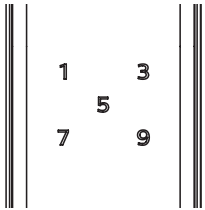
## Mute mode indicator



Colors of the light and the corresponding meanings:

- 1. **White:** Indicates the mute mode is off.
- 2. **Green:** Indicates the mute mode is on.

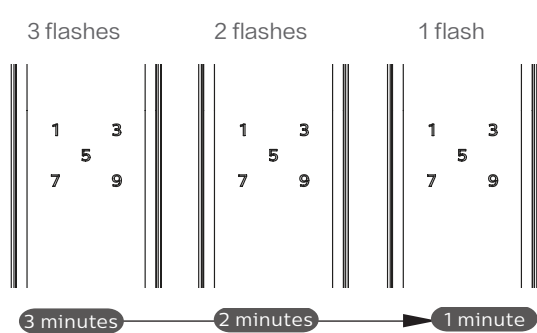
## Inside deadlock indicator



When the door is inside dead locked, the digital functions of the outside escutcheon will be disabled.

If the system is waken up manually, the keypad will display the combination of “15937 (X)” and there will be a voice prompt saying that the inside deadlock has been enabled.

## System lock indicator



If there are 5 consecutive incorrect inputs of any of the 3 types of verification information (fingerprint/PIN code/card), the lock will give an alarm. If there are 10, this type of verification will be locked for 3 minutes. You can unlock with the other 2 types of verification method.

### ⚠ Attention

Only when the system being locked will the system give such a prompt.

## [CLOSE] button indicator



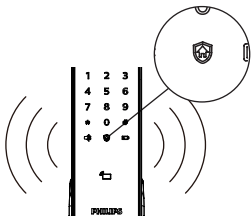
Colors of the light and the corresponding meanings:

- 1. Red light with 2 flashes: Indicates the door has been locked.
- 2. Green light with 2 flashes: Indicates the door has been unlocked.
- 3. Red light with 1 flash: Indicates the door has been dead locked.

## 8 Troubleshooting

### Types of alarms and alarm modes

#### Inside unlocking alarm under outside forced lock mode

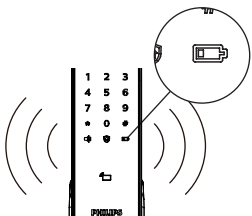


**Triggering:** If the lock is under outside forced lock mode, unlocking from inside will trigger the alarm.

**Alarm mode:** Continuously repeated alarms

**Turning off:** The alarm can be turned off by a successful verification of any type.

#### Low battery voltage alarm, remind you replacing the batteries in time



**Triggering:** After waking up, the system will run an automatic examination on the battery voltage. If the voltage is too low, the lock give an alarm and a voice prompt of “Low battery voltage, please replace all batteries”.

**Alarm mode:**A voice prompt of “Low battery voltage. Please replace all batteries” during unlocking.

**Turning off:** The alarm will automatically turn off.

### Anti-prying alarm



**Triggering :** The door is pried open and the sensor latch bolt pops up.

**Alarm mode:** Continuous repeated alarms.

**Turning off:** The alarm can be turned off automatically or by a successful verification.

### Deadbolt abnormality alarm

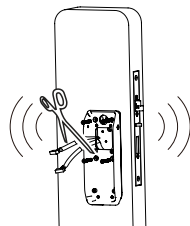


**Triggering:**The deadbolt works abnormally, such as fail to lock or unlock.

**Alarm mode:** Continuously repeated alarms.

**Turning off:** The alarm will automatically turn off.

### Anti-dismantling alarm

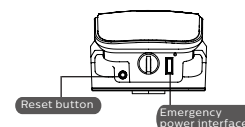


**Triggering:**The connection cable of the outside and inside escutcheons is disconnected.

**Alarm mode:** Continuously repeated alarms.

**Turning off:** The alarm can be turned off by cutting off the power supply.

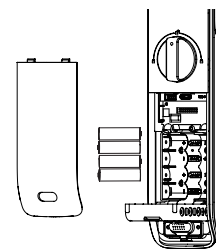
## How to apply an emergency power



When the battery voltage is insufficient, and the door cannot be opened from the outside, you can power up the lock through the Micro USB interface by using a 5V power bank as an emergency power supply. After opening the door lock, please replace the batteries immediately.

In case of a system crash and it's impossible to open the door from outside, please press the Reset button and then release to let it reboot automatically.

## How to replace batteries



The lock is powered by four 1.5V alkaline batteries. There are two sets of working power inside the battery cabin. Eight batteries can be put in to extend the battery life and reduce battery replacement frequency. The battery case is located at the upper end of the inside escutcheon. By pushing the cover upwards, you can remove it and then the batteries.



Philips and the Philips Shield Emblem have registered trademarks of Koninklijke Philips N.V. and are used under license. This product has been manufactured by and is sold under the responsibility of Shenzhen Conex Intelligent Technology Co., Ltd. and Shenzhen Conex Intelligent Technology Co., Ltd. is the warrantor concerning this product.

Version:2.0