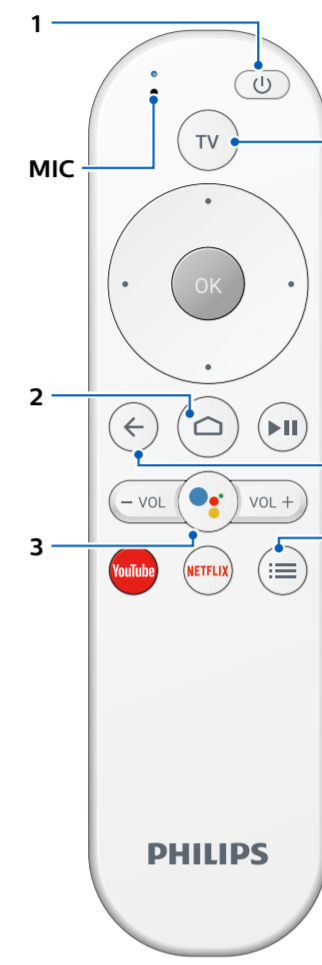
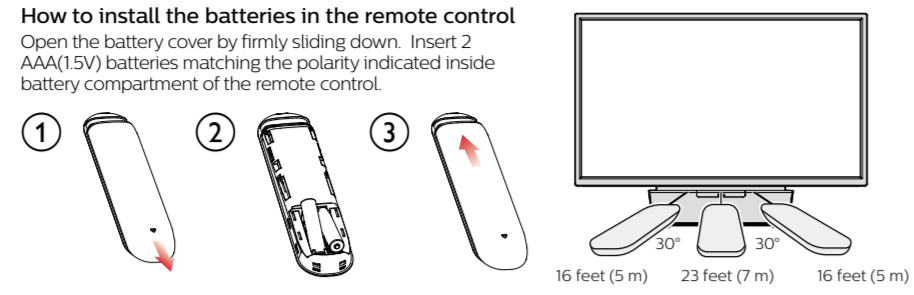




## 1 Using the remote control



- 1 (POWER)**  
Turns the TV on and off of standby.
- 2 (HOME)**  
Access to your apps, Live TV, input devices, settings, and the Google Play Store.
- 3 (Google Assistant)**  
Activates your personal Google Assistant.
- 4 (OPTIONS)**  
Displays a list of menu options applicable to the active screen.
- 5 TV**  
Direct access to your installed TV channels. (This feature is only available for OTA and select cable channels.)
- 6 (BACK)**  
Returns to the previous menu screen.

# Quick start guide

**Call us:** 1-866-309-5962

**Scan to call us:** [QR Code]

**Chat with us:** http://tinyurl.com/y2e29xsq

**Scan to chat with us:** [QR Code]

**Hours of operation:**  
9 AM to 9 PM EST Monday – Saturday,  
9 AM to 6 PM EST Sunday.

## 6 Connecting your devices

**How to use external devices**

**Connecting antenna or cable / satellite / IPTV set-top box**

**Tip:** Connect your external devices to your Android TV before powering on.

If connecting to an antenna via an RF cable DTV programs that are broadcasted in your area can be received for free through a digital antenna.

If connecting a set-top box via an HDMI cable If the TV is connected to a cable or satellite set-top box via an HDMI cable, you must select the correct source. On the Android TV home screen, select **Inputs (↔)** in the upper right corner of the screen, and press **OK** to switch input device list.

**Changing input to devices that are connected to the TV.**  
On the Android TV home screen, select **Inputs (↔)** in the upper right corner of the screen, and press **OK** to switch input device list.

**How to use Chromecast**  
Casting allows you to mirror your favorite apps on the TV screen.

**Tip:** The device you are using to cast to your television must be on the same Wi-Fi network.

- Open a Chromecast-enabled app.
- Tap **⌵**.
- Tap the device you would like to cast to.

**How to connect to your Bluetooth® devices**  
To pair your pair Bluetooth® devices, such as a wireless headset, keyboard, game controller, with your Android TV.

- On the Android TV home screen, select **Settings** in the upper right corner of the screen, and press **OK**.
- Scroll down to **Remote & accessories** and select **Add accessory**.
- Enable pairing mode on your device.
- Using your TV remote control, select your device from the list shown on your TV.
- Your Android TV will pair with your device.

**Tip:** Some devices may require additional steps. Please consult your Bluetooth device manual for more information.

For complete instructions, please visit [www.philips.com/support](http://www.philips.com/support) to download the full version of the online user manual.

This product has been manufactured by and is sold under the responsibility of Funai Corporation, Inc. and Funai Corporation, Inc. is the warrantor in relation to this product.

The Philips trademark and the Philips shield emblem are registered trademarks of Koninklijke Philips N.V. used under license.

## 7 Troubleshooting

Category	Problem	Tip
<b>Power</b>	<b>No power</b>	<ul style="list-style-type: none"> <li>Ensure that the AC outlet supplies the proper voltage. Plug another electrical appliance into the AC outlet to ensure that the AC outlet operates normally.</li> <li>If a power failure occurs, unplug the AC power cord for 1 minute to allow the unit to reset itself.</li> </ul>
<b>Remote control</b>	<b>Remote control buttons are not functional.</b>	<ul style="list-style-type: none"> <li>Re-insert or replace the AAA batteries with their polarities (+/-) as indicated on the remote control battery area.</li> </ul>
	<b>(Google Assistant) microphone on the remote control does not work.</b>	<ul style="list-style-type: none"> <li>To pair the remote control, refer to the step "6 Connecting your devices" in the previous page and see "How to connect to your Bluetooth® devices". To enable pairing mode, press <b>(Google Assistant)</b> and vol down (-) button on your remote control simultaneously for 5 seconds.</li> </ul>
<b>Network</b>	<b>Cannot connect the network.</b>	<ul style="list-style-type: none"> <li>Check if your router and/or modem is properly connected.</li> <li>Check if the Ethernet cable connection between the TV and your router or modem is properly secured.</li> <li>Power cycle the router and/or modem.</li> <li>Check your network settings.</li> </ul>
<b>Picture</b>	<b>Power is on but screen image is off.</b>	<ul style="list-style-type: none"> <li>Check if the connection for your source device is properly secured.</li> <li>Check if the correct input is selected On the Android TV home screen, select <b>Inputs (↔)</b> in the upper right corner of the screen, and press <b>OK</b> to switch input device list.</li> <li>Change source input until you have picture and sound.</li> </ul>

For further assistance, call the customer support service in your country - to obtain assistance, contact Philips customer care center:  
In the USA, Canada, Puerto Rico, or the U.S. Virgin Islands 1866 309 5962  
Enter below the model and serial numbers located on the left side and the rear of the TV cabinet.

Model : \_\_\_\_\_  
Serial : \_\_\_\_\_

## 2 Best Experience

**Google account**  
Unleash your television's true potential. With a Google® account you can effortlessly expand your entertainment library via the Google Play Store and Google Play app and also keep apps up-to-date. You can enjoy this Philips Android TV even without a Google account. For example, you can watch Live TV programming, streaming applications such as Netflix, YouTube and more.

**Note:** Simply login with your Google account.

**Tip:** It is recommended to create a new Google account specifically for your Android TV. A new account will prevent interference and syncing of your personal account. To create a new Google account, visit <http://accounts.google.com/signup> on your smartphone, tablet, or computer.

**Network router**  
**Wired Connection:**  
For the best experience, a wired connection is preferred. Connect an ethernet cable from your router or modem to the LAN port located on the back of your Philips Android TV.

**Wireless Connection:**  
The Philips 6000 Series Android TV is equipped with Wireless LAN 802.11ac MIMO for wireless streaming of up-to 2K content.

**Note:** Wireless performance may be affected by various factors, including the distance between the TV and your Wi-Fi router. To improve wireless performance, we recommend placing your Wi-Fi router within 15 feet of your TV.

**Note:** The use of open or unencrypted Wi-Fi networks is not recommended, as these networks are not secured, and your data could be at risk.

**Tip:** If your Wi-Fi Router was set up by your Internet service provider (ISP), you may find a sticker on the bottom of your router indicating your Wi-Fi SSID and password.

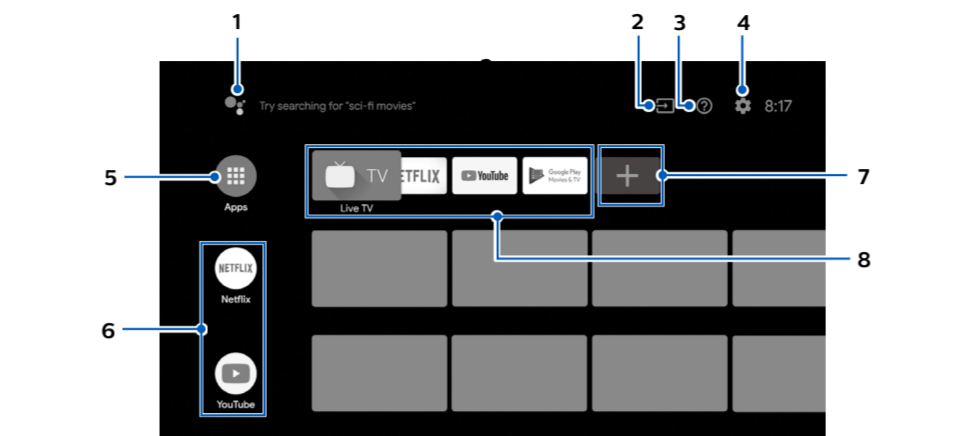
**Set up Android TV with your Android smartphone or tablet**  
If you have an Android phone or tablet, you can quickly and easily set up your Android TV from your Android device. Pairing your Android device will allow you to wirelessly sync your Wi-Fi credentials, Google account, and Android TV compatible apps. During the initial setup, you will be prompted to set up your TV with your Android device, select Yes, and follow the on-screen instructions.

**Note:** Be sure to enable pairing mode on your Android device in the beginning.

## 3 Explore your television

From the Android TV home screen, you can easily access movies, TV shows, music, apps, input devices, settings, and more.

To go back to the home screen at any time, press **(HOME)** on your remote control.



- Google Assistant**  
Activates your personal Google Assistant. Type or speak to search for content, control your TV, manage your smart home devices, and more.
- Inputs**  
Toggle inputs between your favorite source devices.
- e-Help**  
Online help videos and tutorials.
- Settings**  
Configure your television settings and connect to wireless devices.
- Apps**  
Apps gallery. You must sign in with a Google account to visit and download apps from the Google Play store.
- How to rearrange channels**  
Within the row, you want to rearrange, press **(Left Arrow)** on your remote control. To rearrange channels, Select arrow **(Up/Down Arrow)** icon, and press **OK**. Use **(Up/Down Arrow)** to move up or down. To delete channels, Select minus (-) icon, and press **OK**.
- Install Additional Apps**  
Select the "+" and click on the Google Play Store to expand your entertainment library.
- How to move or delete applications**  
Select the application and long press **OK** on your remote control. To move, Select **Move** in the list, and press **OK**. Use **(Left/Right Arrow)** to move left or right. Press **OK**. To delete, Select **Remove from favorites** in the list, and press **OK**.

## 8 Parental Control and Restricted Profile

**Child and rating lock**  
Block individuals from using specific apps or games.  
You can prevent people from using specific apps or games on your Android TV by setting up a restricted profile.

If you are using a restricted profile, you cannot:

- Access or make purchases in the Google Play Store app

- How to set up a restricted profile (👤)**
- On the Android TV home screen, select **Settings** in the upper right corner of the screen, and press **OK**.
  - Scroll down to **Personal** and select **Security & restrictions > Create restricted profile** for each app.
  - Set a PIN.
  - Choose which apps the restricted profile can or cannot use by selecting **Not allowed** or **Allowed** for each app.
  - Press **(BACK)**.
  - Select **Enter restricted profile** and press **OK**.

- How to exit the restricted profile (👤)**
- On the Android TV home screen, select **Restricted Profile** in the upper of the screen, and press **OK**.
  - Select **Exit restricted profile** and press **OK**.
  - Enter PIN.

**Parental controls**  
You can restrict your children from watching certain programs or channels, by setting parental controls using a rating lock.

- How to set up a Parental controls**
- On the Android TV home screen, select **Settings** in the upper right corner of the screen, and press **OK**.
  - Scroll down to **Device** and select **Channel > Parental controls**.
  - Set a PIN > **Program restrictions > Ratings**.
  - Select **Ratings** as described in the table below and press **OK**.

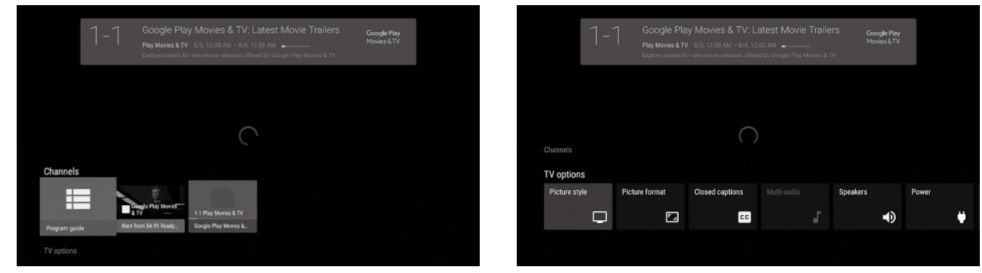
■ Rating types and restriction levels

	United States					United States (Film ratings)						
	TV-Y	TV-Y7	TV-G	TV-PG	TV-14	TV-MA	G	PG	PG-13	R	NC-17	X
<b>High restrictions</b> Content suitable for children		✓		✓	✓	✓			✓	✓	✓	✓
<b>Medium restrictions</b> Content suitable for older children				✓	✓	✓			✓	✓	✓	✓
<b>Low restrictions</b> Content suitable for teens						✓				✓	✓	✓

## 4 Live TV

The Live TV channels feature on Android TV loads television shows, sports, news, and more from your participating TV apps or OTA TV tuner so you can watch them all in one place.  
To select channels by using **(Up/Down Arrow)** on your remote control.

**Options**  
Press **OK** while viewing Live TV to switch between Channels and TV options.  
Channels: switches between program guide and channel.  
TV options: configure picture and audio preferences.



**Program guide**  
The built-in electronic program guide (EPG) allows you to find channels and content easily.

**Pause Live TV**  
You can pause OTA Live TV programming when a 16GB or larger USB Flash Drive is connected to your Android TV.  
Press **(Pause)** on your remote control to either pause or resume playback of Live TV programming.

**Tip:** Live TV feature is only compatible with antenna and select cable broadcasting. To access your cable box or other source inputs, press **(HOME)** on your remote control, then select **Input (↔)** from the upper right corner of the screen, navigate to the input and press **OK**.

## 5 Google Assistant

**Activate Google Assistant**

**Tip:** To enjoy all of the benefits Google Assistant can provide, an internet connection and a Google account are required.

- Activating the Google Assistant on the home screen will launch a Google Query.
- Activating the Google Assistant within an app will allow you to search and find information only related to a specific app.

**How to use the remote control**

- Speak into the microphone located on the top of your remote control. Speech examples may be displayed depending on your model.
- Refer to the Google web site (<https://support.google.com/assistant/>) for more information on what to ask.

**How to use the far field microphone on your TV**

- When TV is in use or standby mode, Face the direction of the TV and say, "OK Google" or "Hey Google".
- Note:** Press **(Mic Off)** located in the front of your TV to disable the Google Assistant from listen mode.
- Tip:** To enable the far field microphone, please follow the below steps: Press **(HOME)**, select **Settings**, enable **OK Google** detection. When Google Assistant is activated, the LED lights up in white. When the far field microphone is off, the LED lights up in orange.

### SafeSearch filter for Google Search

SafeSearch can help you block inappropriate or explicit images from your Google search results. The SafeSearch filter helps block most adult content from your television. Parental supervision is strongly recommended.

- On the Android TV home screen, select **Settings** in the upper right corner of the screen, and press **OK**.
- Scroll down to **Preferences** and select **Google**.
- Select **SafeSearch filter** and press **OK**.

**Copyright**  
All other registered and unregistered trademarks are the property of their respective owners.

The terms HDMI and HDMI High-Definition Multimedia Interface and the HDMI Logo are trademarks or registered trademarks of HDMI Licensing Administrator, Inc. in the United States and other countries.

YouTube and the YouTube logo are trademarks of Google LLC.

Manufactured under license from Dolby Laboratories. Dolby, Dolby Audio, and the double-D symbol are trademarks of Dolby Laboratories Licensing Corporation.

The Bluetooth® word mark and logos are registered trademarks owned by Bluetooth SIG, Inc. and any use of such marks by Funai Electric Co., Ltd. is under license. Other trademarks and trade names are those of their respective owners.

**NETFLIX**

Netflix is available in certain countries. Streaming membership required. More information at [www.netflix.com](http://www.netflix.com).

Google, Google Play, Android, YouTube, and related marks and logos are trademarks of Google LLC. Dolby, Dolby Audio, and the double-D symbol are trademarks of Dolby Laboratories. Use of this TV requires consent to Google Terms of Service and Privacy Policy.

This device complies with part 15 of the FCC Rules. Operation is subject to the following two conditions: (1) This device may not cause harmful interference, and (2) this device must accept any interference received, including interference that may cause undesired operation. Features and specifications are subject to change without notice.

Network services, content, and the operating systems and software of this Product may be subject to individual terms and conditions and changed, interrupted or discontinued at any time and may require fees, registration and credit card information. The American Academy of Pediatrics discourages television viewing for children younger than two years of age. Some features may require an always-on broadband internet connection, firmware update and/or a minimum bandwidth. Internet services vary by location.

**License**  
Funai Corporation, Inc. hereby offers to deliver, upon request, a copy of the complete corresponding source code for the copyrighted open source code packages, on an "AS IS" basis, used in this product for which such offer is requested by the respective licensees. This offer is valid up to three years after the product purchase to anyone in receipt of this information. To obtain source code, please contact Funai Corporation, Inc. You should write to Funai Service Corporation OSS-Request, 2425 Saegei Drive, Grovesport, OH 43024, USA. Funai Corporation, Inc. disclaims any and all warranties and representations with respect to such software and related source code including quality, reliability, usability, and accuracy, and further disclaims all express, implied, statutory or otherwise, including without limitation, any implied warranties of title, non-infringement, merchantability, or fitness for a particular purpose. Funai Corporation, Inc. shall not be liable to make any corrections to the open source software or source code or to provide any support or assistance with respect to it. Funai Corporation, Inc. disclaims any and all liability arising out of or in connection with the use of this software and/or source code.

