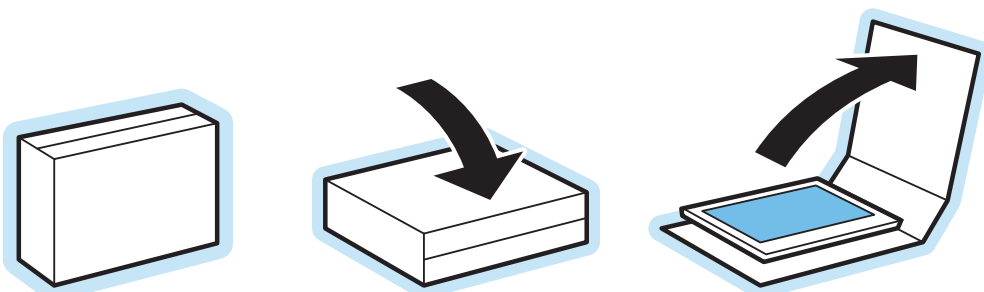


Unpack

Déballer
Desempaquetar



PHILIPS

13 Secure the TV on the stand

14 Connect your cables

15 Place the batteries in the remote

16 Switch the TV on

17 Select your language

Use the cursor up/down to select your choice in the menu on screen.

18 Confirm your choice

Use the color keys to proceed.

Follow the instructions on screen to proceed with the TV installation. Your TV will automatically search and install all available TV channels. The Settings assistant will help you to set your personal TV preferences.

You will find more information in the User Manual.

Mount your TV on a VESA™ compliant wallmounting kit
VESA MIS-F, 800, 400, 8 (sold separately)

1 Unpack the 4 spacers

2 Tighten the 4 spacers

3 Connect your cables

4 Your TV is ready to mount on a VESA MIS-F 800, 400, 8 compliant bracket (not included).



What's in the box

Television

Remote Control

Stand Kit

Power cable

Antenna cable

User Kit

User Manual

Connect guide

Spacers for VESA compliant wall mounting

What's else you'll need

AC

x2

x2

x2

x2

x2

For VESA wall mounting

Need help?
User Manual
See the User Manual in the User Kit box that came with your TV.
Online help : www.usasupport.philips.com
Contact line :
1 888 PHILIPS (744 5477) English speaking
1 800 651 6162 Francophone
Mo-Sat 7AM-11PM, Sun 8AM-11PM, 7 days a week, except public holidays.
Please, have the Model and Serial Number ready before you call.
You can find these numbers on the packaging label or on the back or bottom of your TV.

Register
Return your Warranty Registration Card today or register on www.register.philips.com to ensure you receive all the benefits you're entitled to.

Take your TV out of the box

1

2

3

4

5

6

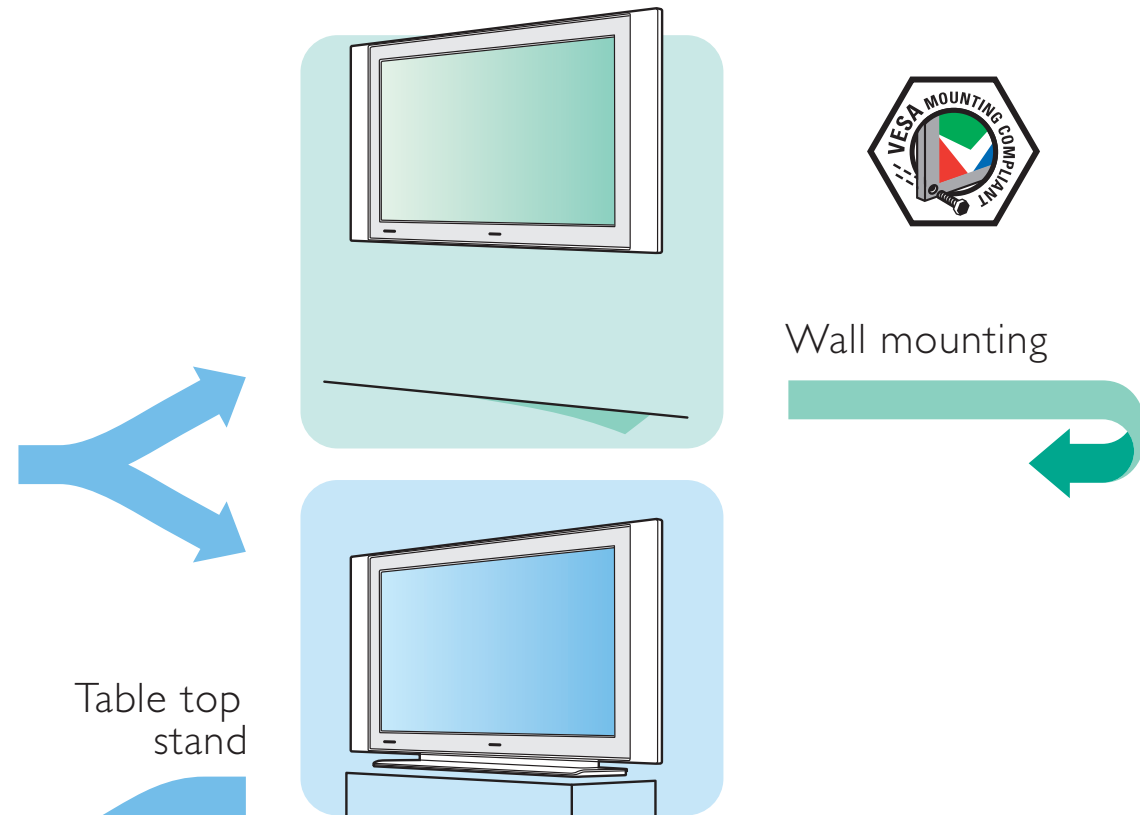
7

8

Please, write down the Model & Serial number here.

Model number

Serial number



Mount your TV on the table top stand (stand included)

9 Unpack the stand parts

10 Insert the stand feet

11 Tighten the screws

12 Mount your TV on the stand

13