

Troubleshooting

No reaction to the remote control.

- Connect the product to the power outlet.
- Point the remote control at the product.
- Insert the batteries correctly.
- Insert new batteries in the remote control.

Cannot play back a disc.

- Make sure that the product supports the disc.
- Make sure that the Blu-ray Disc player supports the region code of the DVD or BD.
(BD: A: DVD: All or 1)
- For DVD+RW/+R, make sure that the disc is finalized.
- Clean the disc.

No video signal on the display device.

- Turn on the TV.
- Set the TV to the correct external input.
- Select the correct video resolution using [HDMI].
- Press and hold **[▶ (PLAY)]** on the front panel for 5 seconds to change the setting back to its default.

Quick Start Guide

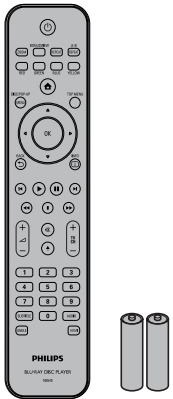


- 1 Connections
- 2 Basic Setup
- 3 Enjoy

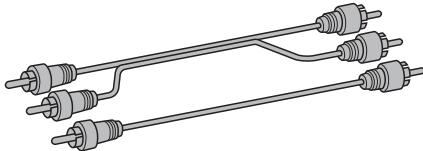
What's in the box?



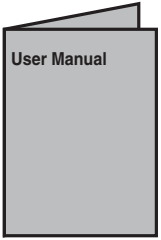
Blu-ray Disc Player



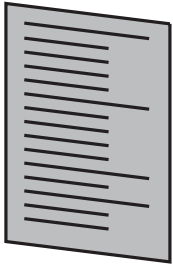
Remote Control with Batteries (AAA x 2)



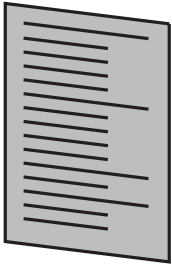
RCA Audio / Video Cables



User Manual



Quick Start Guide



Registration Card

Need help?

User Manual

See the user manual that came with your Philips Blu-ray Disc Player.

Online

Go to www.philips.com/welcome.

Hotline

Call 1-866-309-0866 for our operators.



Philips and Philips Shield are used under license of Koninklijke Philips Electronics NV.

Printed in China
JpnYN-0914/F7-3
E5K13UD_E5K15UD
1VMN27322A ★★

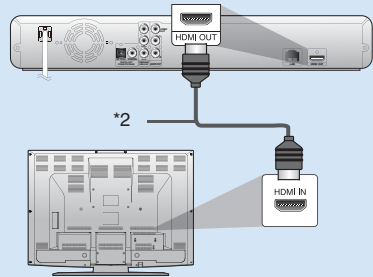


1 Connections

Connection To The TV

Using HDMI (best quality)*¹

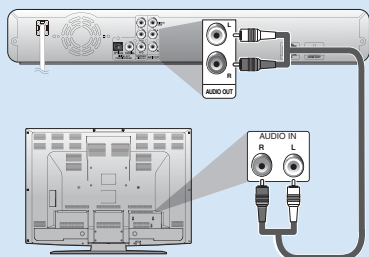
- 1 Take an HDMI cable.
- 2 Plug one end of the HDMI cable into the HDMI OUT jack of this unit.
- 3 Plug the other end of the HDMI cable into the HDMI input jack of your TV.



OR

ANALOG AUDIO CONNECTION

- 1 Take the supplied RCA audio cable.
- 2 Plug the red and white RCA audio cable into the AUDIO OUT (L/R) jacks of this unit.
- 3 Plug the other ends of the RCA audio cable into the audio input jacks of your TV.

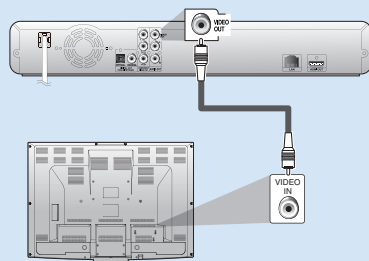


+

ANALOG VIDEO CONNECTION

Option 1 - Using Composite Video (standard quality)

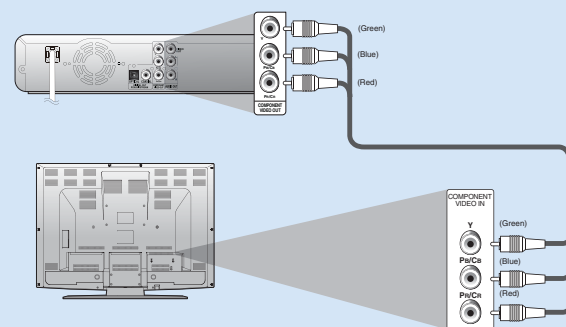
- 1 Take the supplied RCA video cable.
- 2 Plug the yellow RCA video cable into the VIDEO OUT jack of this unit.
- 3 Plug the other end of the RCA video cable into the video input jack of your TV.



OR

Option 2 - Using Component Video (better quality)*¹

- 1 Take a green, blue, and red component video cable.
- 2 Plug the component video cable into the COMPONENT VIDEO OUT jacks of this unit.
- 3 Plug the other ends of the component video cable into the component video input jacks of your TV.



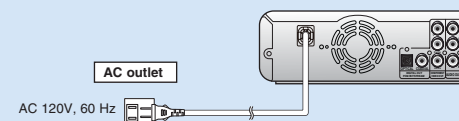
*1) This unit is compatible with the progressive scan system. The feature provides you with the higher quality pictures than traditional output system does. To utilize this feature, a component or an HDMI connection is required. Refer to the "HDMI Video Resolution" or "Component Output" on page 32 in the user manual to set the resolution.

*2) HDMI connection requires no analog audio connection.

CONNECTING THE AC CORD

After you made all necessary connections, connect the AC cord to the AC outlet.

Insert the plugs securely. Incomplete connections will result in the generation of noise.



Supplied cables used in these connections are as follows:

- RCA audio cable (L/R) x 1
- RCA video cable x 1

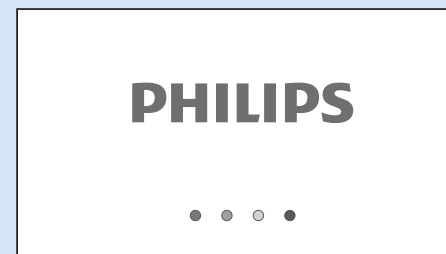
Please purchase the rest of the necessary cables at your local store.

Note: Refer to the user manual for other possible connections and important safety instructions.

2 Basic Setup

Finding The Viewing Channel On Your TV

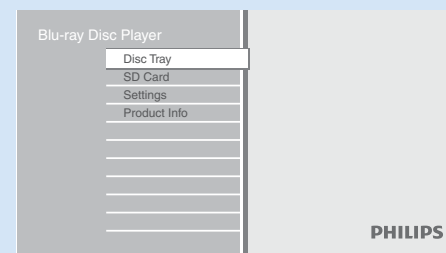
- 1 After you have made all the necessary connections, press [STANDBY-ON] to turn on the unit.
- 2 Turn on your TV.
- 3 Press the button on the TV's remote control that accesses the external input channel. It may be labeled "SOURCE", "AV" or "SELECT" (refer to your TV's user manual). Or press "2" on the TV's remote control, then press channel down button repeatedly until you see the PHILIPS splash screen.



This is the correct viewing channel (external input channel).

- If a certain amount of time has passed since you turned on the unit, you may see the home menu instead of the PHILIPS splash screen.

Home menu:

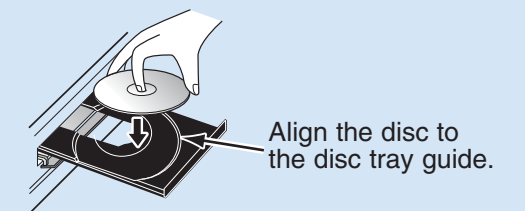


The BDP5005 is now ready for use.

3 Enjoy

Start Disc Playback

- 1 Press [OPEN/CLOSE] to open the disc tray.
- 2 Place the disc on the disc tray with its label side facing up.



* Make sure the disc is compatible with this unit. (Refer to page 18 in the user manual for the list of compatible discs.)

- 3 Press [OPEN/CLOSE] to close the disc tray.

It may take a while to load the disc.

- 4 Playback may start automatically. If not, press [PLAY].

To pause playback:

Press [PAUSE].

To return to the normal playback:

Press [PLAY].

To stop playback:

Press [STOP].

To eject the disc:

Press [OPEN/CLOSE] to open the disc tray. Remove the disc.

Press [OPEN/CLOSE] to close the disc tray.

