

Philips  
5500 series HD LED  
Android TV

**32" Android TV**  
HD 720p  
Chromecast  
Built-in Google Assistant



**32PFL5505**

## Android TV with Google Assistant

Explore a smarter way to watch

The Philips Android TV brings great content to you, so you can spend less time browsing and more time watching. Just pick from the personalized recommendations from Google Play, YouTube, Netflix, and other apps directly on your TV screen.

### Android TV makes it easy to get more from your TV

- Choose from 5000+ apps on the Google Play store
- Wirelessly connect your headphones with Bluetooth built-in
- Chromecast — Put your small screen on your big screen
- 400,000+ movies and show from across streaming services

### Google Assistant — Do more with your voice

- Play your favorite content and control your TV volume
- Plan your day, learn about the weather, traffic, and more
- Control your compatible smart home devices

### Enlarge your viewing experience

- 720p High Definition Resolution for ultra-sharp images

**PHILIPS**

5500 series HD LED Android TV  
32" Android TV HD 720p, Chromecast, Built-in Google Assistant

32PFL5505/F7

# Highlights

## Android TV

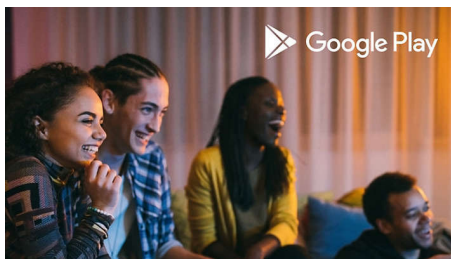


Android TV makes it easier to get more from your TV. Choose from 400,000+ movies and shows from across streaming services. Ask Google to control your TV, get recommendations of what to watch, dim the lights, and more with your voice.

## 720p HD Resolution

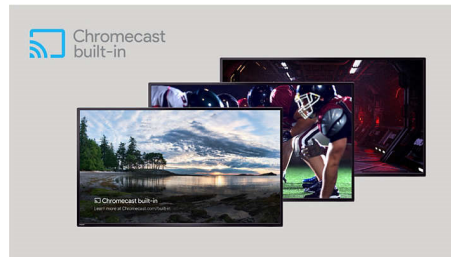
720p High Definition Resolution for ultra-sharp images

## Google Play



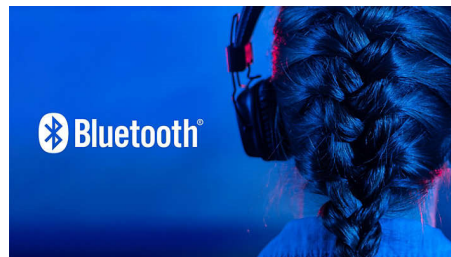
Google Play is your entertainment unbound. Download all your favorite music, movies, TV shows, and games all in one place. Choose from 5000+ apps on the Google Play Store and enjoy them with easy access from your personally customized Android TV home screen.

## Chromecast Built-in



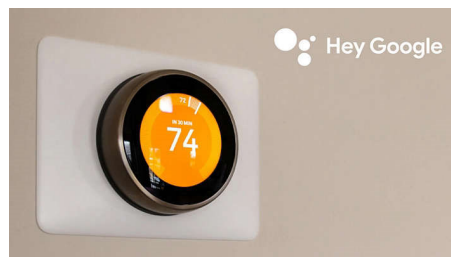
Put your small screen on your big screen. Simply use your mobile device to cast your favorite shows, movies, music, sports, games, and more on your TV.

## Bluetooth



With Bluetooth technology built-in, you can connect your headphones wirelessly to enjoy your favorite programs without disturbing others. Soundbars with Bluetooth connectivity pair easily, so you can ditch the extra cables for a simply cleaner setup.

## Smart Home Devices



Use your voice to create the perfect viewing environment. Control smart home devices

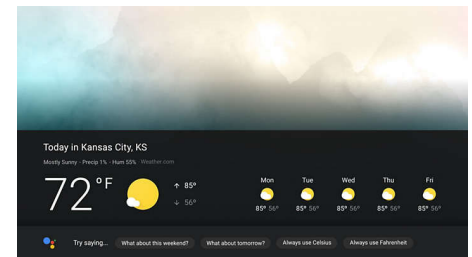
throughout your home. Adjust room temperature, lighting, or control other connected devices.\*1

## Hey Google



Press the Google Assistant button on your remote to do more on your TV with your voice. Ask Google to search for the latest blockbuster, stream shows, or open multiplayer games. Have it dim the lights by connecting compatible smart home devices. Manage tasks and see your calendar. Or ask it questions and see the answers on your TV.

## Google Assistant



Before you take off, learn more about the weather, traffic and what's on your calendar, all with the power of your voice.



# Specifications

## Picture/Display

- Aspect ratio: Widescreen(16:9)
- Contrast ratio (typical): 1200:1
- Response time (typical): 16 ms
- Diagonal screen size (inch): 32 inch
- Diagonal screen size (metric): 81 cm
- Backlight: LED
- Panel resolution: 1366 x 768p
- Picture enhancement: Digital Noise Reduction, MPEG artifact reduction, Dynamic contrast, Film mode, Game Mode, Custom Color management
- Visible screen diagonal (inch): 31.5 inch
- Display screen type: LCD HD Display
- Viewing angle: 178° (H) / 178° (V)

## Supported Display Resolution

- Computer formats: 640 x 480, 60Hz, 720 x 480, 60Hz, 800 x 600, 60Hz, 1024 x 768, 60Hz, 1280 x 768, 60Hz, 1280 x 1024, 60Hz, 1360 x 768, 60Hz, 1440 x 900, 60Hz, 1920 x 1080, 60Hz, 1680 x 1050, 60Hz, 1400 x 1050, 60Hz
- Video formats: 480i, 60Hz, 480p, 60Hz, 720p, 60Hz, 1080i, 60Hz, 1080p, 24, 30, 60Hz

## Sound

- Equalizer: 5-bands
- Output power (RMS): 2 x 8W
- Sound System: Stereo, SAP, Dolby Audio

## Loudspeakers

- Built-in speakers: 2

## Convenience

- Child Protection: Child Lock+Parental Control
- Clock: Sleep Timer
- Ease of Use: Auto Volume Leveling, Picture style, Sound style
- Remote Control: TV
- Screen Format Adjustments: Automatic, 4:3, Movie Expand, Full
- Program: Pause LiveTV, USB Recording\*

## Multimedia Applications

- Multimedia connections: USB Storage Device
- Playback Formats: H.264/MPEG-4 AVC, H.265/HEVC, MPEG2, MPEG4\*

## Tuner/Reception/Transmission

- Aerial Input: 75 ohm F-type

- TV system: ATSC, NTSC
- Video Playback: NTSC, ATSC
- Tuner bands: UHF, VHF

## Connectivity

- Other connections: Headphone out, Wireless LAN 802.11ac MIMO
- EasyLink (HDMI-CEC): One touch play, Power status, System info (menu language), Remote control pass-through, System audio control, System standby
- Bluetooth version: 4.2
- Audio Output - Digital: Optical (TOSLINK)
- AV 1: Audio L/R in, CVBS in
- USB: USB 2.0
- HDMI 1: HDMI
- HDMI 2: HDMI(ARC)

## Power

- Mains power: 120V/60Hz
- Power consumption: 50 W
- Standby power consumption: <math>\leq 0.5W</math>
- Ambient temperature: 5°C to 40°C (41°F to 104°F)

## Dimensions

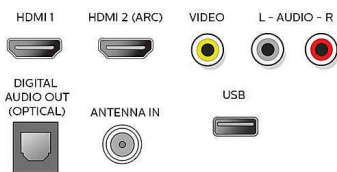
- Product weight (lb): 8.93 lb
- Box height (inch): 20.1 inch
- Box width (inch): 31.6 inch
- Box depth (inch): 4.7 inch
- Wall mount compatible: 300 x 200 mm
- Set Width (inch): 29.1 inch
- Set Height (inch): 17.5 inch
- Set Depth (inch): 2.6 inch
- Set width (with stand) (inch): 29.1 inch
- Set depth (with stand) (inch): 6.7 inch
- Set height (with stand) (inch): 18.3 inch
- Product weight (+stand) (lb): 9.15 lb
- Weight incl. Packaging (lb): 11.90 lb
- Stand width (inch): 30.6 inch

## Accessories

- Included accessories: Quick start guide, Caution sheet, Safety warranty sheet, Remote Control, Batteries for remote control, Table top stand, Screws
- Power cord: 59 inch

## Connections

Rear



Issue date 2023-12-12

Version: 3.1.1

UPC: 6 09585 25342 1

© 2023 Koninklijke Philips N.V.  
All Rights reserved.

Specifications are subject to change without notice.  
Trademarks are the property of Koninklijke Philips N.V.  
or their respective owners.

[www.philips.com](http://www.philips.com)

## Android TV Services

- OS: Android Pie

\* Google, Android TV, Chromecast built-in and other marks are trademarks of Google LLC

\* Netflix streaming membership required. See [www.netflix.com/TermsOfUse](http://www.netflix.com/TermsOfUse)

\* 1 requires compatible smart home products

\* USB recording for digital channels only, recordings may be limited by broadcast copy protection. Country and channel restrictions may apply.

\* USB multimedia playback requires third-party app installation. Please visit the Google Play Store for more details, including app availability for your country.