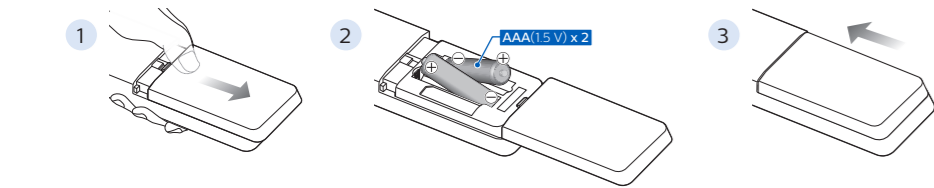
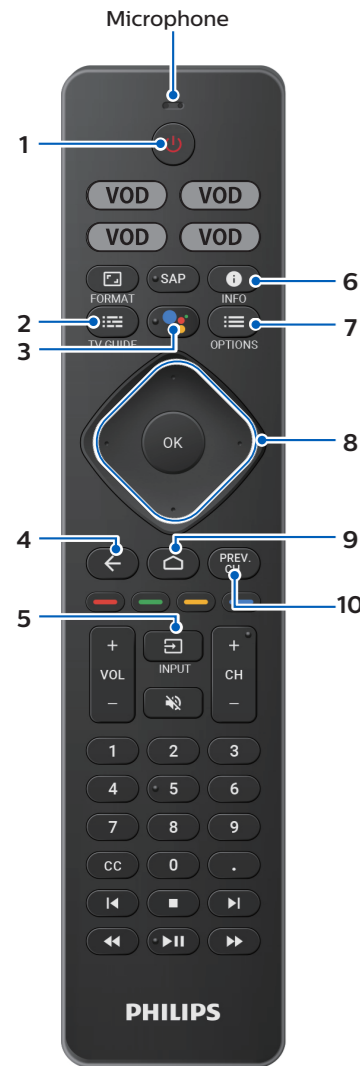
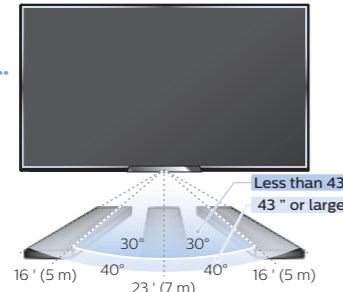




## 2 Using the remote

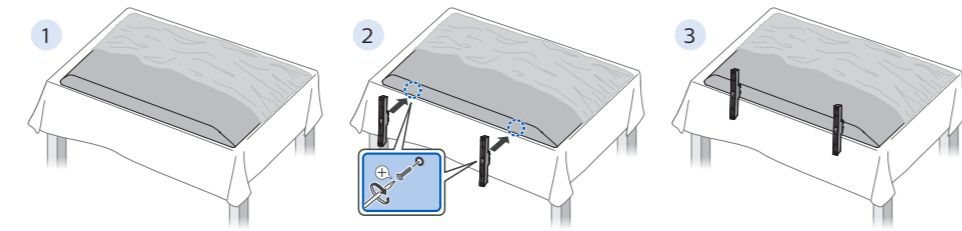


Controllable range for the remote



- 1 (POWER)**  
Turns the TV on and off of standby.
- 2 (TV GUIDE)**  
Access to the Electronic Program Guide (EPG).
- 3 The Google Assistant**  
Press the Assistant button on your remote to talk to your Google Assistant.
- 4 (BACK)**  
Returns to the previous menu screen.
- 5 (INPUT)**  
Change input source. Select and change access to the attached devices such as Blu-ray player, gaming consoles, or cable box.
- 6 (INFO)**  
Displays input and resolution information.
- 7 (OPTIONS)**  
Displays a list of menu options applicable to the active screen.
- 8 (CURSOR as ▲▼◀▶) and OK**  
Moves to select an item and to determine on the various menu.
- 9 (HOME)**  
Access to your apps, Live TV, input devices, settings, and the Google Play store.
- 10 PREV.CH**  
Direct access to the Live TV channels. Displays the last selected terminal or channel.

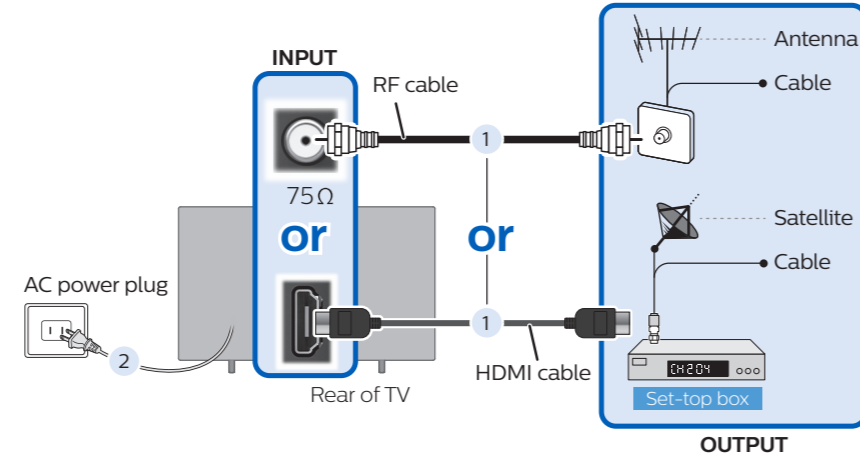
## 3 Installing the stands



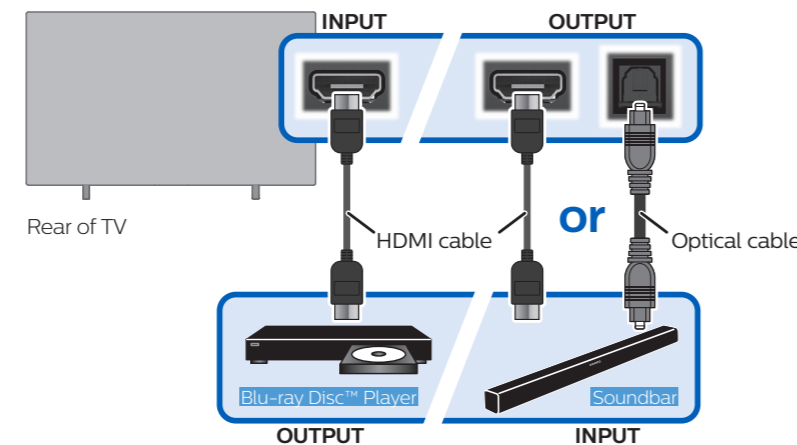
- Remove the tape on the bottom of the TV set and the plastic bag.
- Fasten the stand to the TV with provided screws. While fastening the screws, hold the stand to prevent it from falling.
- Both stands should now be securely fastened.

\* If you plan to wall mount your TV, refer to "Wall mount" on the reverse side of this guide for recommended wall mount bracket kit.

## 4 Connect the power and antenna, cable or satellite



## 5 Connection overview



## 6 Best experience

### Google account

Unleash your television's true potential. With a Google® account you can effortlessly expand your entertainment library via the Google Play store and Google Play app and also keep apps up-to-date.

While you can enjoy this Philips Android TV™ without a Google Account via the preinstalled selection of applications, we recommend a Google account to download additional apps from the Google Play Store or use the Google Assistant.

**Note:**  
Simply login with your Google account.

**Tip:**  
It is recommended to create a new Google account specifically for your Android TV. A new account will prevent interference and syncing of your personal account. To create a new Google account, visit <http://accounts.google.com/signup> on your smartphone, tablet, or computer.

### Network router

**Wireless Connection:**  
The Philips 5000 series Android TV is equipped with wireless LAN 802.11ac for wireless streaming.

**Note:**  
Wireless performance may be affected by various factors, including the distance between the TV and your Wi-Fi router. To improve wireless performance, we recommend placing your Wi-Fi router within 15 feet of your TV. The use of open or unencrypted Wi-Fi networks is not recommended, as these networks are not secured, and your data could be at risk.

**Tip:**  
If your Wi-Fi router was set up by your internet service provider (ISP), you may find a sticker on the bottom of your router indicating your Wi-Fi SSID and password.

### Set up Android TV with your Android smartphone or tablet

If you have an Android phone or tablet, you can quickly and easily set up your Android TV from your Android device. Pairing your Android device will allow you to wirelessly sync your Wi-Fi credentials, Google account, and Android TV compatible apps. During the initial setup, you will be prompted to set up your TV with your Android device, select **Yes**, and follow the on-screen instructions.

**Note:**  
Be sure to enable pairing mode on your Android device in the beginning.

## 7 The Google Assistant

### Activate the Google Assistant

**Tip:**  
To enjoy all of the benefits the Google Assistant can provide, an internet connection and a Google account are required.

### How to use the remote

Press your Assistant button on your remote to talk to the Google Assistant. To learn more about the Google Assistant visit <https://assistant.google.com>

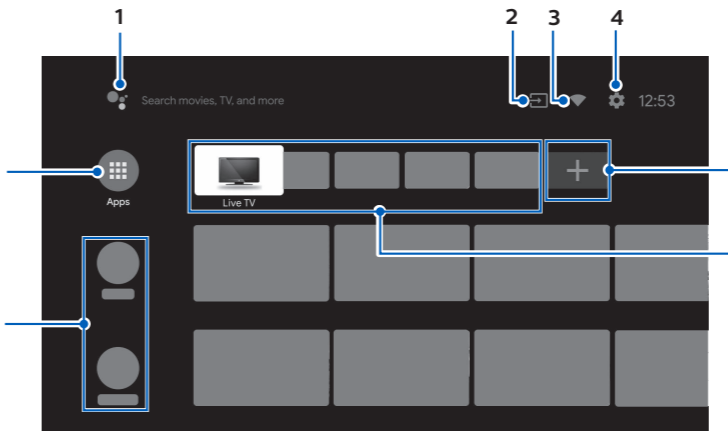
### SafeSearch filter for Google search

SafeSearch can help you block inappropriate or explicit images from your Google search results. The SafeSearch filter helps block most adult content from your television. Parental supervision is strongly recommended.

- On the Android TV home screen, select **Settings** in the upper right corner of the screen, and press **OK**.
- Select **Device Preferences** and press **OK**.
- Select **the Google Assistant** and press **OK**.
- Select **SafeSearch filter** and press **OK**.

## 8 Explore your television

From the Android TV home screen, you can easily access movies, TV shows, music, apps, input devices, settings, and more. To go back to the home screen at any time, press **⏠ (HOME)** on your remote.



### 1 The Google Assistant

With the Google Assistant, quickly access entertainment, control smart devices, get answers on screen, and more using your voice.

### 2 Inputs

Toggle inputs between your favorite source devices.

### 3 Network condition

Display the network status and open network settings if selected.

### 4 Settings

Configure your television settings and connect to wireless devices.

### 5 Apps

Apps gallery  
You must sign in with a Google account to visit and download apps from the Google Play store.

### 6 How to rearrange channels

Within the row, you want to rearrange, press **◀** on your remote. To rearrange channels, select arrow (**▲▼**) icon, and press **OK**. Use **▲▼** to move up or down. Press **OK** To delete channels, select minus (-) icon, and press **OK**.

### 7 Install Additional Apps

Select the "+" and click on the Google Play Store to expand your entertainment library.

### 8 How to move or delete applications

Select the application and long press **OK** on your remote. To move, select **Move** in the list, and press **OK**. Use **◀▶** to move left or right. Press **OK**. To delete, select **Remove from favorites** in the list, and press **OK**.

## 9 Live TV/Antenna

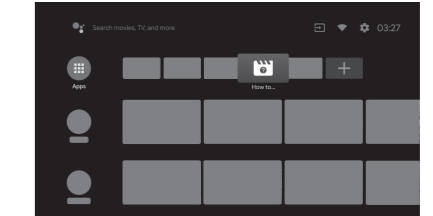
The Live TV channels feature on Android TV loads television shows, sports, news, and more from your participating TV apps or Antenna / OTA TV tuner so you can watch them all in one place.

To select channels, use **CH + / -** on your remote. For installation of TV channels using a set-top box, go to "4 Connect the power and antenna, cable or satellite".

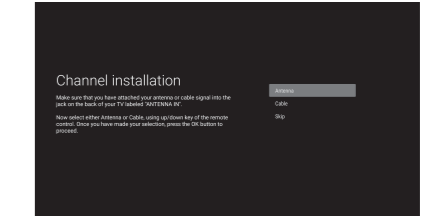
### Add channels

To add for the first time or additional channels, please follow the steps below:

- On the Home menu, go to the **Apps** row and select **How to...**



- Select **Live TV** to open channel installation page. Once open, select **Setup** and press **OK**.
- Select your signal type **Antenna / Cable** to start the channel installation.



### Channel List

Press **OK** while viewing Live TV to open channel list. Based on the type of channels installed, select with the yellow color key **Broadcast (conventional TV channels)** or **Network (internet TV channels)**.

### Program guide

To view the latest TV program schedule, press **≡ (TV GUIDE)** on your remote.

### Tip:

Live TV feature is only compatible with antenna and select cable broadcasting. To access your cable box or other source inputs, you must press **≡ (INPUT)** on your remote.

For further assistance, call the customer support service in your country.

- To obtain assistance, contact Philips customer care center;

In the U.S.A., Canada, Puerto Rico, or the U.S. Virgin Islands **1 866 309 5962**

Enter below the model and serial numbers located on the left side and the rear of the TV cabinet.

Model :

Serial :

For complete instructions, please visit [www.philips.com/support](http://www.philips.com/support) to download the full version of the online user manual.

This product has been manufactured by and is sold under the responsibility of Funai Corporation, Inc., and Funai Corporation, Inc. is the warrantor in relation to this product.

The Philips trademark and the Philips shield emblem are registered trademarks of Koninklijke Philips N.V. used under license.

