

PHILIPS

EasyKey

6000 series

Smart Lever Door
Lock

DDL609

User manual

www.philips.com/support

Sign your product up and get
support at [www.philips.com/sup-
port](http://www.philips.com/support)

Contents

1. Important Information	02	6. Other features	17
Safety		Default settings	
Caution		Mute button	
Disposal of used products and batteries			
2. Assembly	03	7. Indicators	18
Packing list		Door lock status indicator	
Exploded views		Mute indicator	
Notice before assembling		System locking indicator	
Assembly procedure			
3. Get to know your smart lock	09	8. Troubleshooting	19
Outside escutcheon		Alert types	
Inside escutcheon		How to apply external power supply	
		Battery replacement	
4. Settings	10		
Instructions before setting			
Initial master PIN code modification			
Master PIN code modification			
Add a PIN code			
Delete a PIN code			
Add a fingerprint(Optional)			
Delete a fingerprint(Optional)			
Add a key tag			
Delete a key tag			
Passage mode			
Access methods			
5. Get to use your lock	14		
Outdoor/ indoor unlock			
Outdoor/ indoor lock			
Mechanical key unlock			

1. Important information

Safety

- ◆ Before using the product, please read through and fully understand all instructions. The warranty will not cover damage caused by non-observance to the instructions.
- ◆ Suggest using only the manufacturer-specified accessories / components.
- ◆ Use only the alkaline or Li-polymer batteries the product is equipped with or use the same type of batteries with the same specification.
- ◆ Do not forcibly disassemble the product to avoid triggering the alert or damaging the product.
- ◆ Do not use any sharp object to scratch the fingerprint sensor, otherwise, it might cause permanent damage.
- ◆ Do not expose products to places that have water leakage or splashing.
- ◆ Do not expose the product to corrosive substances to prevent damaging the protective cover.
- ◆ Do not hang objects on the handle in case it might affect the normal use of the lock.
- ◆ Please clean the product with soft cloth.
- ◆ Do not disassemble the battery during setting up and operating.
- ◆ Please follow the assembly instructions that we provided to install the product and keep the relevant sealed stickers properly.
- ◆ Please modify the default master PIN code immediately after installation and configuration are done, and keep the mechanical key properly, do not disclose the PIN codes to others.
- ◆ Please replace all the batteries in time if there is a low battery alert. Please make sure to match the poles (+/-) correctly when installing the batteries.

Caution

- ◆ Do not place the batteries near ignition source to avoid explosion.
- ◆ Do not use any power supply that does not meet the safety requirements to power up the product.
- ◆ Do not connect the 2 poles of the batteries with metals to avoid short out which may lead to explosion.
- ◆ Please make sure any component replacement is executed by Philips, Philips authorized service centers or professional technicians.
- ◆ Do not use accessories or parts that have been produced by other manufacturers or have not been specifically recommended by Philips. The use of such accessories and parts may void your warranty.

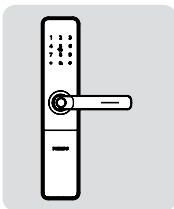
Disposal of used products and batteries

- ◆ You can have your locks reclaimed at Philips authorized service centers. You will receive corresponding compensation if your products meet our recall conditions.
- ◆ Please familiarize with the local electronic product collection system yourself.
- ◆ Please follow local regulations and do not discard used products and batteries into ordinary household waste.
- ◆ Please familiarize with the local regulations on batteries classification recycling yourself. Disposing of used products and batteries properly can help avoid a negative impact on the environment and human health.

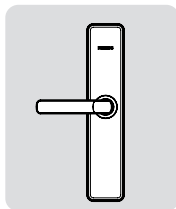
2 Assembly

Packing list

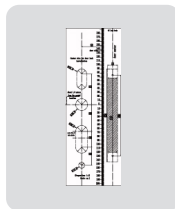
This packing list is for reference only. Please refer to the actual packing items.



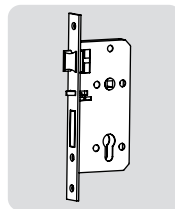
① Outside escutcheon with silicon pad



② Inside escutcheon with silicon pad



③ Drilling template



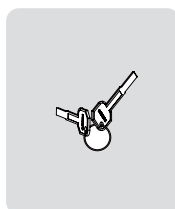
④ Mortise



⑤ QSG



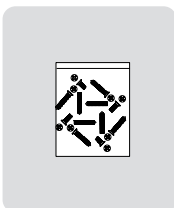
⑥ Warranty card



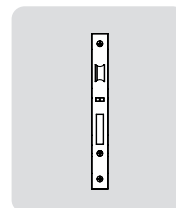
⑦ Mechanical keys



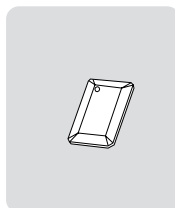
⑧ Batteries



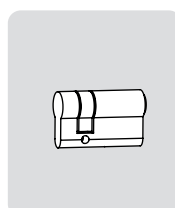
⑨ Installation kit



⑩ Strike plate

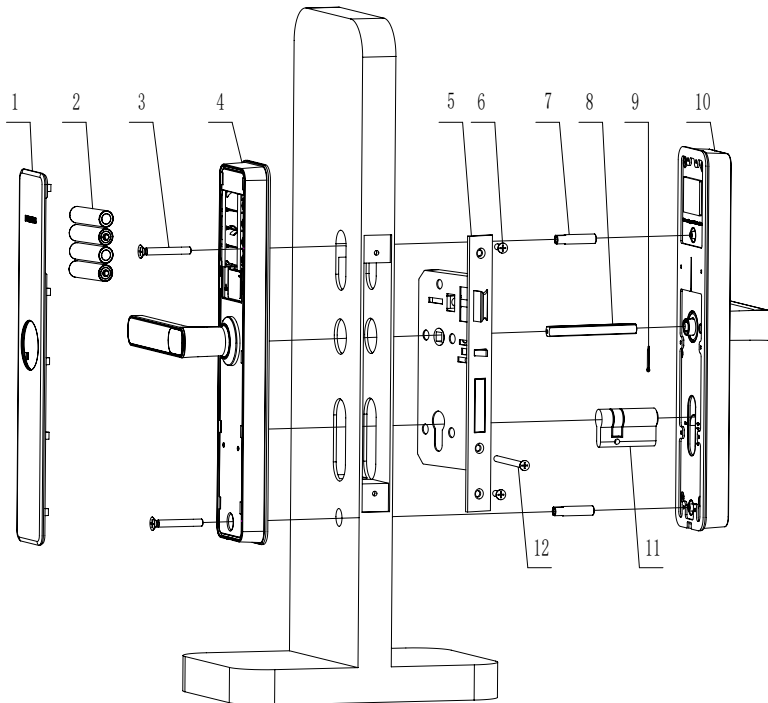


⑪ Key tag



⑫ Lock cylinder

Exploded views



1. Inside escutcheon
cover*1

2. AA battery*4

3. Anchor screw*2

4. Inside escutcheon
component*1

5. Mortise*1

6. Mortise anchor
screw*2

7. M6 screw tube*2

8. Square shaft*1

9. Cotter pin*1

10. Outside escutcheon
component*1

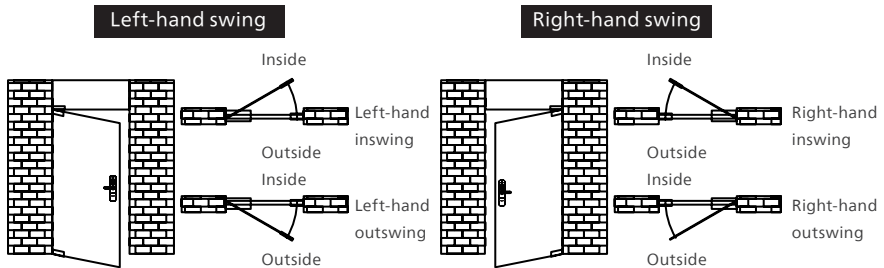
11. Lock cylinder*1

12. Lock cylinder's anchor
screw*1

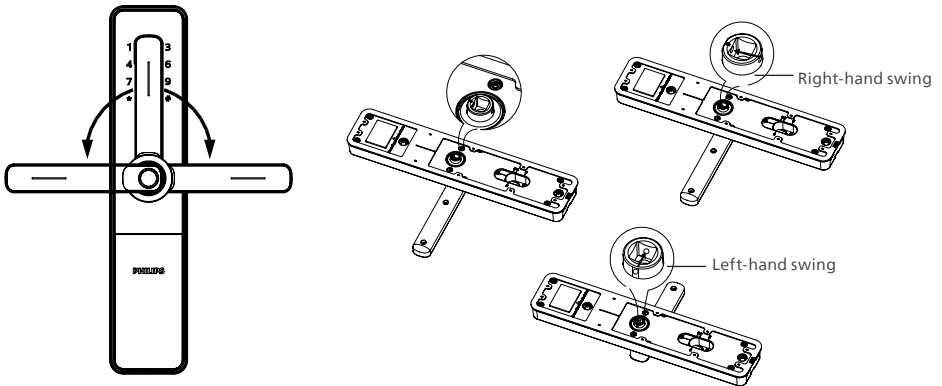
Notice before assembling

Step 1 | Door swing direction

This product applies to doors with four opening directions: left-hand inswing, left-hand outswing, right-hand inswing, and right-hand outswing.

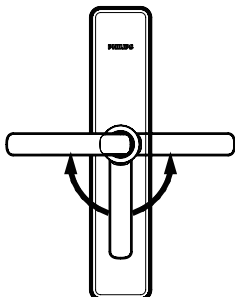


Step 2 | Adjustable front lever instructions

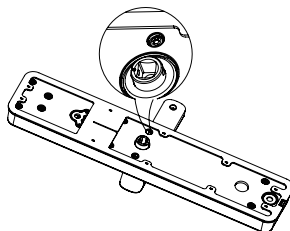


- 1 Loosen the screw on the lever and rotate the lever 180° to the right position.
- 2 Secure the screw on the lever.
- 3 When the door is right-hand swing, rotate the square shaft hole to make the line formed by the two small holes vertical to the ground; when the door is left-hand swing, rotate the square shaft hole to make the line formed by the two small holes horizontal to the ground.

Adjustable rear lever instructions



- 1 Loosen the screw on the lever and rotate the lever 180° to the right position.



- 2 Secure the screw on the lever.

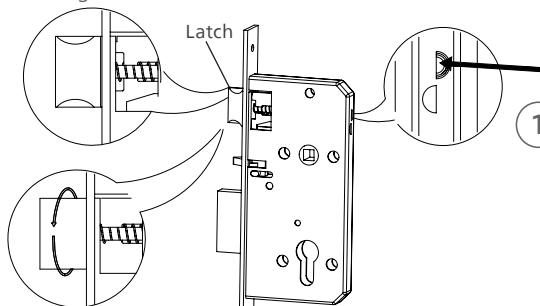
Attention

1. Choose a proper installation kit base on the door thickness. The default tool kit applies to a door thickness of 30-60mm. Please consult the local distributor for other door thicknesses.
2. If the length of the square shaft is too long, please cut it to a proper length according to the door thickness.

Step 3| Adjustable latch instructions

Adjust the latch direction to adapt to the door swing direction: if the slant of the latch is towards the outside door, then the door is inswing; if the slant of the latch is towards the inside door, then the door is outswing.

- 2 Push the latch in and rotate it to 180 degrees



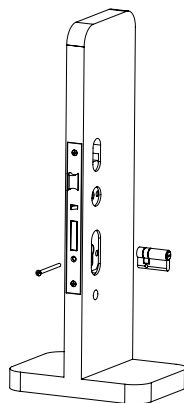
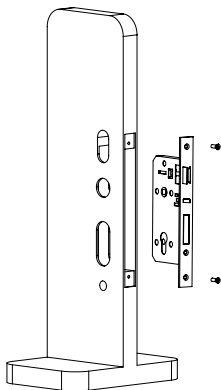
- 1 Press and hold the arrow position with a tool

- 3 Release the latch and let it rebound

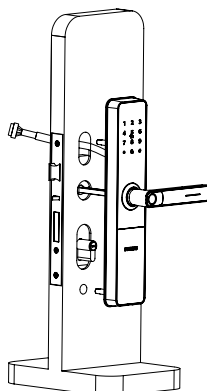
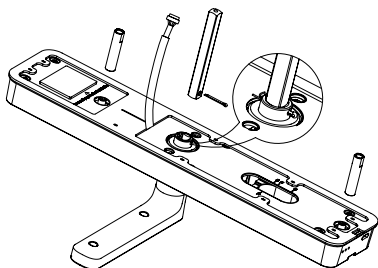
Assembly procedure

The following assembly procedure applies to the right-hand swing doors. For left-hand swing doors, please read through the [Notice before assembling] and complete the adjustable latch instructions.

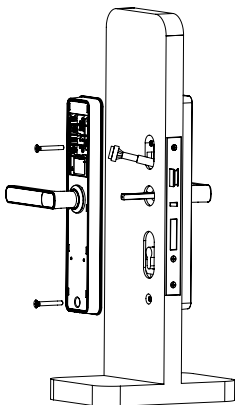
- 1 To drill holes in the door according to the drilling template, mount the mortise into the jamb, and tighten the anchor screws.
- 2 Assemble the lock cylinder to the mortise, and secure the lock cylinder with anchor screws.



- 3 Put the square shaft into the square shaft hole, and align the small hole in the square shaft with the hole in the square shaft hole. Once the square shaft is inserted, use a cotter pin to go through the holes and bend one of the straight legs of the cotter pin to secure the square shaft.
- 4 Pass the connecting cable through the hole, align and insert the square shaft of the outside escutcheon into the rotary hole, and ensure the outside escutcheon is tight against the outside of the door.



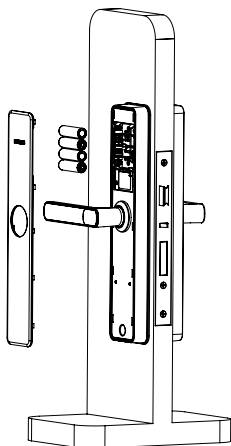
- 5 Insert the connecting cables into the sockets accordingly, and align the square shaft with the hole. Please be sure the inside escutcheon is closely attached to the inner surface of the door, then secure the inside escutcheon with M6 anchor screws.



⚠ Attention

Please cut the square shaft to a proper length according to the door thickness.

- 6 Install four AA batteries, and put the inside escutcheon cover on. Then check whether each part is connected and assembly in good condition.



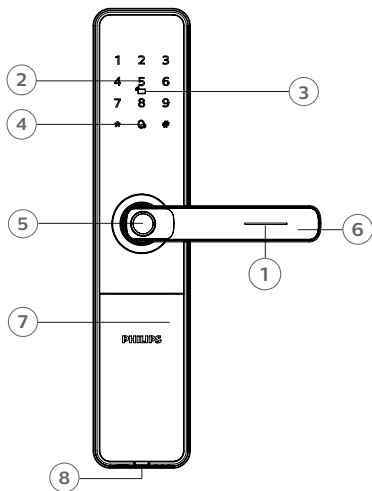
⚠ Attention

Please be sure that the inside escutcheon cover is fastened so that it will not fall off upon closing the door.

3 Get to know your smart lock

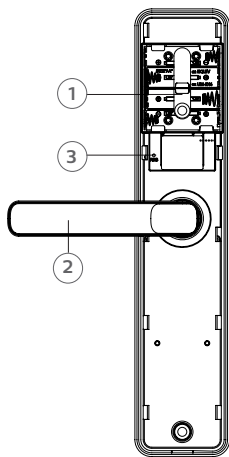
This packing list is for reference only. Please refer to the actual packing items.

Outside escutcheon



1	Indicator
2	Keypad
3	Card reader
4	Mute button
5	Fingerprint sensor
6	Front lever
7	Mechanical key hole
8	Reset and external power supply interface

Inside escutcheon



1	Battery compartment
2	Rear lever
3	Reset button

4 Settings

Instructions before setting

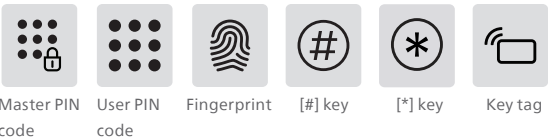
◆The system mode is divided into general mode and dual-verification mode.

General mode	Dual-verification mode
Any enrolled access methods can unlock the door	Any two enrolled access methods among PIN code, key tag, and fingerprint can unlock the door

Attention

- 1. This user manual covers 2 versions of DDL609.
Version 1: Fingerprint+PIN code+key tag+key
Version 2: PIN code+key tag+key
Note: Fingerprint unlock is optional.
- 2. In dual verification mode, the combined access methods will vary depending on different product versions.
Version 1: Fingerprint + PIN code, fingerprint + key tag, PIN code + key tag
Version 2: PIN code + key tag

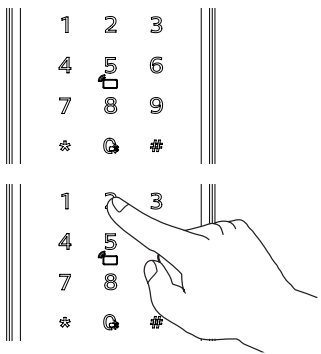
◆Icon annotation



Attention

The default master PIN code is 12345678.

◆Master mode



- ① Light up the keypad
- ② Press [*] twice before entering other numbers, then enter the master PIN code and confirm with [#], so you are in master mode.
- ③ When entering the master mode, the system will sound a beep and the status indicator will flash in green for once.

Modify initial master PIN code



Press [*] twice, and enter the initial master PIN code "12345678", then press [#] to confirm.



After entering the master mode, enter the new master PIN code (6-12 digits) and press [#] to confirm, the indicator will flash in green once with a voice prompt. Enter the new master PIN code again and press [#] to confirm. Once the modification is done, the indicator will flash in green twice with a voice prompt.

Modify master PIN code



Press [*] twice, and enter the master PIN code, then press [#] to confirm.

1

Press [1] to modify the master PIN code. The indicator will flash in green once after [1] is pressed, indicating that the lock can perform in settings.



Enter a new master PIN code (6-12 digits) and press [#] to confirm. the indicator will flash in green once with a voice prompt. Enter the new master PIN code again and press [#] to confirm. Once the modification is done, the indicator will flash in green twice with a voice prompt.

User settings



Press [*] twice, and enter the master PIN code, then press [#] to confirm.

2

Press [2] to add a PIN code. The indicator will flash in green once after [2] is pressed, indicating that the lock can perform in settings.



Enter a user PIN code (6-12 digits) and press [#] to confirm, the indicator will flash in green once with a voice prompt. Enter the user PIN code again and press [#] to confirm. Once the adding is done, the indicator will flash in green twice with a voice prompt.

Delete a PIN code



Press [*] twice, and enter the master PIN code, then press [#] to confirm.

3

Press [3] to delete a PIN code. The indicator will flash in green once after [3] is pressed, indicating that the lock can perform in settings.



Enter the PIN code that needs to be deleted and press [#] to confirm. After the deletion, the indicator will flash in green twice with a voice prompt.

Add a PIN code (optional)



Press [*] twice, and enter the master PIN code, then press [#] to confirm.

5

Press [5] to add a fingerprint. The indicator will flash in green once after [5] is pressed, indicating that the lock can perform in settings.



Place your finger on the fingerprint sensor, and after you hear a "beep" take your finger off and put it back again, repeat the action 8 times to finish fingerprint enrollment. After adding the fingerprint, the indicator will flash in green twice with a voice prompt.

Attention

The fingerprint is an optional feature, if the product you purchased has a fingerprint unlock function, please follow this step to enroll user fingerprints; if there is no fingerprint unlock function, please skip this step.

Delete a PIN code (optional)



Press [*] twice, and enter the master PIN code, then press [#] to confirm.

6

Press [6] to delete a fingerprint. The indicator will flash in green once after [6] is pressed, indicating that the lock can perform in settings.



Place your finger on the fingerprint sensor until you hear a voice prompt, when the indicator flashes in green twice, indicating the deletion is done.

Attention

The fingerprint is an optional feature, if the product you purchased has a fingerprint unlock function, please follow this step to enroll user fingerprints; if there is no fingerprint unlock function, please skip this step.

Add a key tag



Press [*] twice, and enter the master PIN code, then press [#] to confirm.

7

Press [7] to add a key tag. The indicator will flash in green once after [7] is pressed, indicating that the lock can perform in settings.



Place the key tag on the card reader until you hear a beep, when the indicator flashes in green twice, indicating the enrollment is done.

Delete a key tag



Press [*] twice, and enter the master PIN code, then press [#] to confirm.

8

Press [8] to delete a key tag. The indicator will flash in green once after [8] is pressed, indicating that the lock can perform in settings.



Place the key tag on the card reader, after you hear a voice prompt, the indicator will flash in green twice, indicating that the deletion is done.

Passage mode



Press [*] twice, and enter the master PIN code, then press [#] to confirm.

9

Press [9] to enter into passage mode settings. The indicator will flash in green once after [9] is pressed, indicating that the lock can perform in settings.



Press [1] to enable passage mode, so anyone can press down the handle to unlock the door.

Press [2] to disable passage mode, when the mode is disabled, only the enrolled access methods can use to unlock the door.

Once the operation is done, the indicator will flash in green twice with a voice prompt.

⚠ Attention

After the passage mode is activated, press [8] for 3s can temporarily turn off the passage mode. When the next user uses any enrolled access methods to unlock the door, the passage mode will be restored. If you want to disable the passage mode permanently, please go to settings; if the passage mode is not needed, please disable it in time.

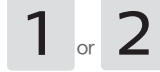
Access methods



Press [*] twice, and enter the master PIN code, then press [#] to confirm.



Press [0] to enter access method settings. The indicator will flash in green once after [0] is pressed, indicating that the lock can perform in settings.



Press [1] to go to single-method unlock, the user can use any enrolled access method among PIN code, key tag, and fingerprint to open the door.

Press [2] to go to dual verification mode, the user can use any two enrolled access methods from PIN code, key tag, and fingerprint to open the door.

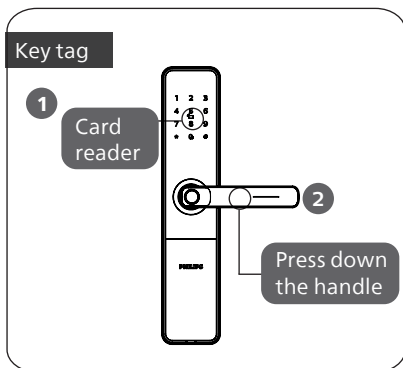
After the setting, the indicator will flash in green twice with a voice prompt.

⚠ Attention

Fingerprint unlock is optional. In dual verification mode, if the product has fingerprint unlock function, any two enrolled access methods among PIN code, key tag, and fingerprint can unlock the door; if the product has no fingerprint unlock function, you can only use PIN code and key tag to unlock the door.

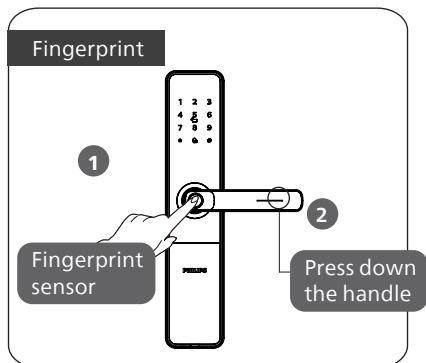
5 Get to use your lock

Outdoor unlock



① Place the enrolled key tag on the card reader.

② After a voice prompt, the indicator will flash in green, then users can press down the handle to unlock the door.

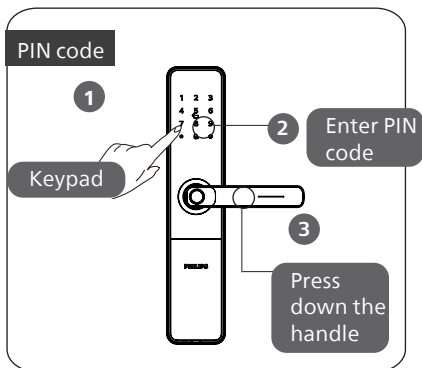


① Place the enrolled finger on the fingerprint sensor.

② After a voice prompt, the indicator will flash in green, then users can press down the handle to unlock the door.

⚠ Attention

Fingerprint unlock is optional. Fingerprint unlocking is only available with the product that has fingerprint unlocking.



① Touch to wake up the keypad.

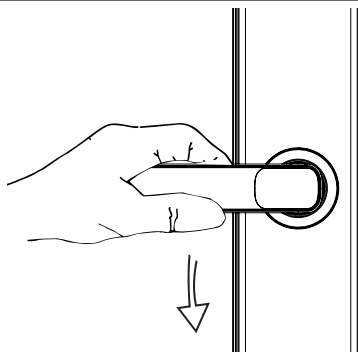
② Enter the enrolled PIN code and confirm with [#].

③ After a voice prompt, the indicator will flash in green, then users can press down the handle to unlock the door.

Indoor unlock

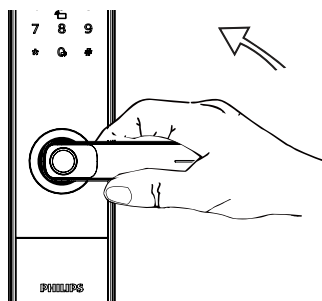
Handle

Press down the handle to unlock



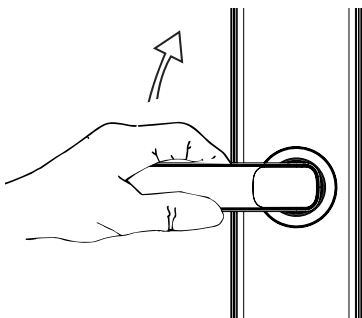
Outside/Inside locking

Outside locking



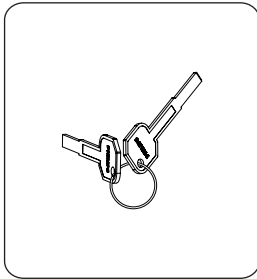
After closing the door, lift up the handle, and the latch bolt will automatically pop up to lock the door.

Inside locking

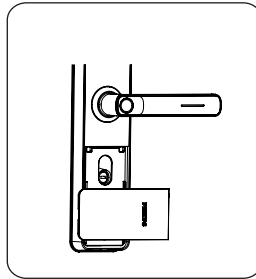


After closing the door, lift up the handle, and the latch bolt will automatically pop up to lock the door.

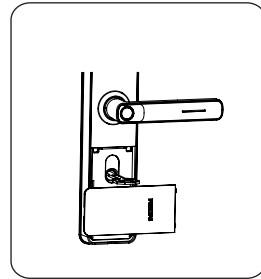
Mechanical key



- ① Get the mechanical key from the product package.



- ② How to open the mechanical key cover: Lift the mechanical key cover from the lip, and rotate it by 90 degrees.



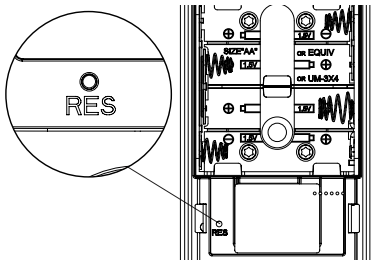
- ③ Insert the mechanical key into the lock hole, so that the key is 90° vertical to the outside escutcheon. Then left or right rotate the key for about one and a half circles to unlock the door.

Attention

Please use the mechanical key to unlock the door for emergencies only, i.e. when the battery is dead, when you forgot the PIN code, or the lock fails to work.

6 Other features

Default settings

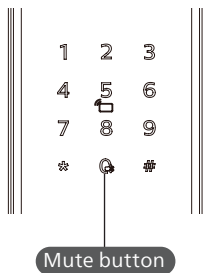
**Function:**

To empty all user information and restore to default settings.

How to use:

Double press the [RES] button with a sharp object, and all the user information will be emptied. The lock will restore to default settings.

Mute button

**Function:**

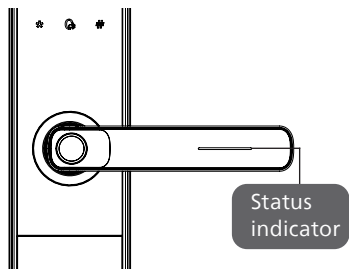
Press the [Mute button] to enable mute mode when unlocking the door, this function applies to scenarios in which you don't want to disturb your family.

How to use:

(1)Mute: when the outside escutcheon lights up, press the [mute button] for 2 seconds to enter mute mode, and the indicator will glow in white.
(2)Unmute: when the outside escutcheon lights up, press the [mute button] for 2 seconds to restore to voice guide, and the indicator will glow in white.

7 Indicators

Status indicator



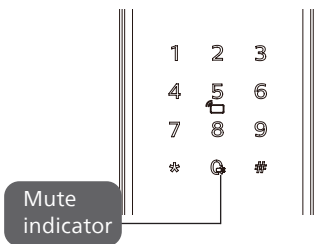
Meanings of the indicator in different colors

Blue: when the system wakes up, the indicator will turn blue, indicating that the door lock can be processed and operated;

Green: when the door lock is unlocked, the indicator will turn green, indicating that the door has opened;

Red: when the door lock is locked, the indicator will turn red, indicating that the door has closed.

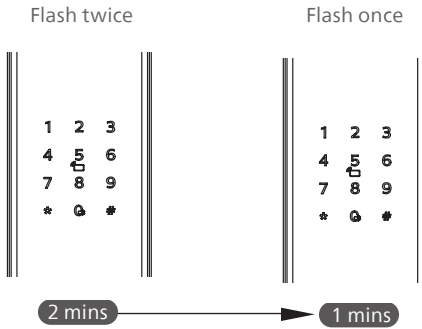
Mute indicator



Meanings of the indicator in different colors

White: whether the mute mode is on or off, the icon is white.

System-locking indicator



The door lock will be locked for 100 seconds if there are 5 consecutive incorrect inputs among any of the 3 types of access methods (fingerprint, PIN code, or key tag) within 5 minutes.

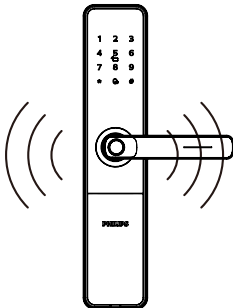
⚠ Attention

1. Only when touching to wake up the keypad or verifying the access methods will the system appear such a system-locking prompt.
2. Fingerprint unlock is optional. Fingerprint unlocking is only available with the product that has fingerprint unlocking.

8 Troubleshooting

Alert types

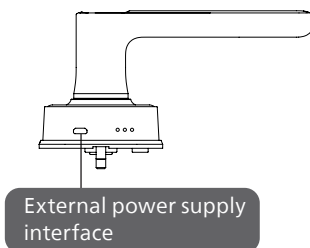
Low battery alert



Triggering: when the system wakes up, the battery voltage will be automatically detected. If the battery voltage is insufficient, an alert will be triggered to remind you to replace the battery.

Alert mode: with a voice prompt during unlocking.
Off: turn off automatically.

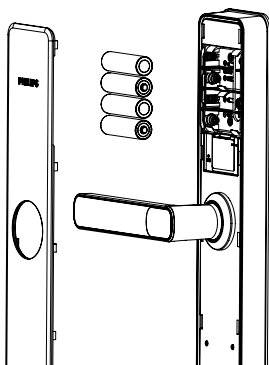
How to apply an external power supply



External power supply interface

When the battery voltage is insufficient, and the door cannot open from outside, you can power up the lock through a 5V power bank as an external power supply via the Type-C interface. After opening the door lock, please replace the batteries immediately.

Battery replacement



The lips are located at the bottom end of the inside escutcheon. You can open the inside escutcheon cover by pulling it up from the lips to remove the cover and replace the battery.



Philips and the Philips Shield Emblem are registered trademarks of Koninklijke Philips N.V. and are used under license. This product has been manufactured by and is sold under the responsibility of Shenzhen Conex Intelligent Technology Co., Ltd., and Shenzhen Conex Intelligent Technology Co., Ltd. is the warrantor concerning this product.