

PHILIPS

1000 Series

Smart safe box

SBX101



Shenzhen Yunyue Intelligent Technology Co., Ltd.

Address: 11th Floor, Block B, Tsinghua Info Port. No.1 Xindong Road, Songpingshan, Songpingshan Community, Xili Street, Nanshan District, Shenzhen

Philips and the Philips Shield Emblem are registered trademarks of Koninklijke Philips N.V. and are used under license.

This product has been manufactured by and is sold under the responsibility of Shenzhen Yunyue Intelligent Technology Co., Ltd. and Shenzhen Yunyue Intelligent Technology Co., Ltd. is the warrantor of this product.

Philips smart safe box reserves the rights to change content and product specifications included in this user manual without prior notice at any time.

© 2021 Koninklijke Philips N.V. All rights reserved.

Version: 1.0

User manual



To register your product as well as obtain support, please go to:
www.philips.com/support

Contents

Safety precautions	01
Safety information	01
Safety warnings	02
Packing list	03
Product specifications	04
Get to know your smart safe box	05
How to use your smart safe box	07
First use	07
Finger vein registration	08
Finger vein recognition	09
Unlocking under working mode	10
Other functions	11
Language setting	11
Vibration alert	11
Factory setting	12
Unlocking for emergency	13
Charging your smart safe box	13
FAQs	14
After-sales service	17
After-sales policies	17
After-sales support	18
Warranty card	19

Safety precautions

Safety information

For the protection and safe use of the product, be sure to follow the instructions and precautions on safety that are stated in this manual whenever you handle the product.

This product doesn't include adaptor. To prevent electric shock, fire, explosion and other possible dangers, be sure to use power cords and adaptors that are compliant with local safety regulations or specified by Philips.

1. The operating temperature of this product is 0°C-40°C. Storage temperature is -20°C-55°C. Any operation outside this range may cause malfunction of the product.
2. Please follow local regulations on the disposal of this product, the batteries and other accessories contained.
3. Do not mix used batteries with domestic waste. Improper disposal of batteries may cause fire and explosions.
4. Do not use swollen batteries.
5. To prevent fire and explosion caused by leaking and overheating of batteries, do not to dismantle, crash, squeeze batteries or throw batteries into fire.
6. To prevent burn injuries caused by overheating of batteries, be sure not to short-circuit battery.
7. To prevent explosions caused by overheating of batteries, be sure not to place the product in high temperature environment.
8. Do not repair the device by yourself. If the product or any of its components are not working properly, please consult Philips smart safe box for after-sales service, or send the product to authorized dealers of Philips smart safe box for maintenance.

Safety warnings

Attention

1. Please follow relevant laws and regulations. Do not use the product in places storing flammable and explosive oil and gas or chemicals or any place nearby, such as gas stations, oil depots, chemical warehouses, etc.
2. If you want to use the product near any personal medical equipment, please consult your physician and the equipment manufacturer.
3. Please observe all safety warnings and regulations regarding the use of this product while driving.
4. To prevent lightning accidents, please do not use the product outdoors during thunderstorms.
5. Do not charge the product in places with high humidity such as bathroom. It might cause electric shocks, personal injuries, fire and damage to the charger.
6. Please comply with relevant laws and regulations that explicitly prohibit the use of electronic devices in any places.

Packing list

Attention

Please read this user manual carefully before using this product and keep it properly. After unpacking, please check carefully if there is any missing item.

Smart safe box	1 piece
Mechanical key	2 pieces
USB power cable (Type-C)	1 piece
User manual	1 set

Attention:

Don't put mechanical keys inside the safe box. You might need it to unlock the safe in an emergency.

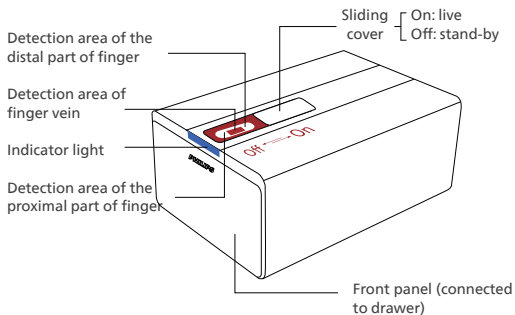
Operating environment:
indoors; temperature: 0 °C - 40 °C ; relative humidity: 30 % ~ 90 %.

Product specifications

Product name	Smart safe box SBX101
Product model	SBX101-1A0
Product dimensions (L x W x H)	412 x 290 x 181 mm
Net weight of product	11 kg
Thickness of steel plate of housing	1.5 mm
Thickness of steel plate of drawer	2.0 mm
Voltage of external power supply	5.0 ± 0.2 V
Battery capacity	4,400 mAh
Finger vein capacity	200 pieces
Vibration alert	> 70 dB (*100 cm in front of loud speaker)

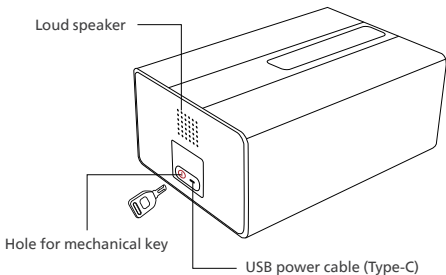
Environmental safety declaration:
Electronic components used for this product are ROHS compliant!

Get to know your smart safe box



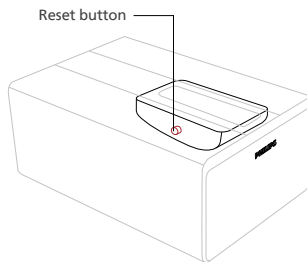
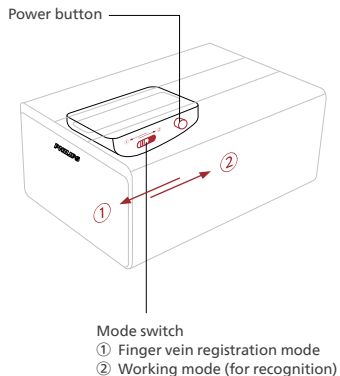
Indicator light

- Blue: working
- Green: recognition succeeded
- Red: recognition failed
- Yellow light (flickering): low-voltage or malfunction
- Yellow light (staying on): charging



⚠ Attention

If the safe box is going to be kept unused for a long time, please close the sliding cover to avoid accumulation of dirt and dust.



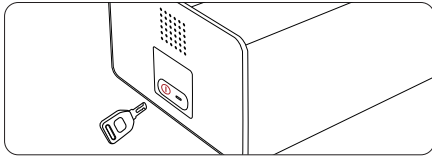
⚠ Attention

Long press the 'Reset button' for 6 seconds, all registered finger vein will be removed, and the safe will restore to factory setting.

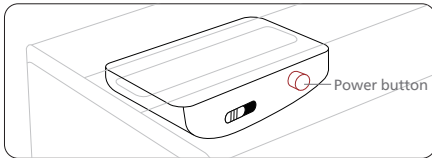
How to use your smart safe box

First use

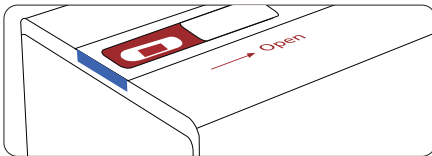
1. Please use mechanical key for first unlocking.



2. Press the 'Power button'. There will be a beep after around 5 seconds, indicating successful unlocking.



3. Open sliding cover. The blue indicator light will be turned on.

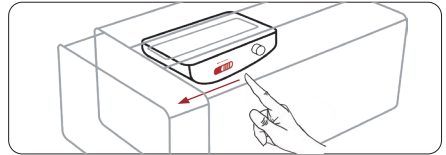


⚠ Attention

Possible cause of no beep after pressing 'Power button' might be low battery voltage. Please refer to FQA to solve this issue.

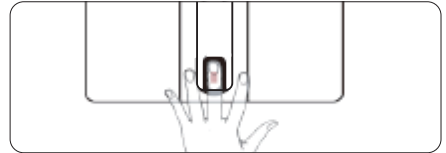
Registering finger vein

1. Switch 'Mode button' to left, the safe enters into "Finger vein registration mode".

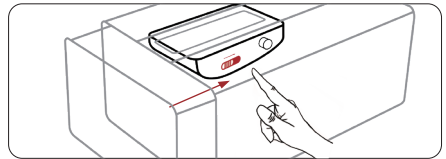


2. Entering finger vein: please stretch your finger and keep the distal and proximal part of your finger close to the detection area. Repeat no less than 5 times.

⚠ Attention: don't press too hard.



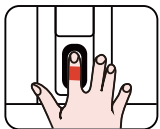
3. After successful registration, switch the 'Mode button' to the right. The safe enters into 'working mode'.



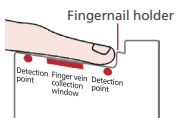
4. Close the door of the safe to complete finger vein registration.

How to use your smart safe box

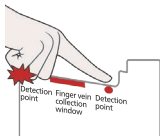
Finger vein recognition



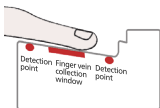
- Open your palm
- Choose a finger
- Stretch the finger naturally



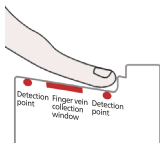
- Put it gently on the detection area
- Cover finger vein collection window with the middle part of your finger



- Don't make fist
- Don't press too hard



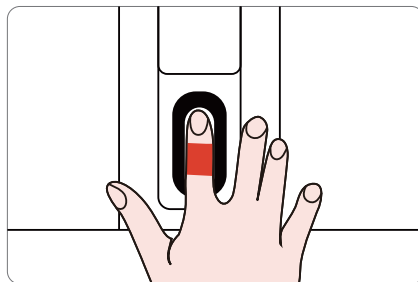
- Keep distal part of your finger in right position



- Keep proximal part of your finger in right position

Unlocking under working mode

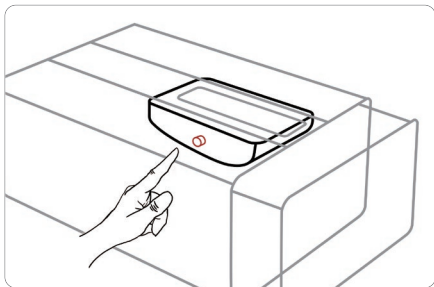
1. Unlock the safe: put the registered finger on the finger vein collection window. After successful recognition, the door of the safe will pop out a certain distance. Pull the drawer out to use.
2. Lock the safe: push the drawer back after use until hearing a click, indicating the safe has been locked.



Other functions

Language setting

This product support voice guidance in Chinese and English
Switch language: short press 'Reset button' 5 times to switch language between Chinese and English.



Vibration alert

Trigger of alert: vibration alert is off by default. It will be triggered by vibration and shock of certain intensity.

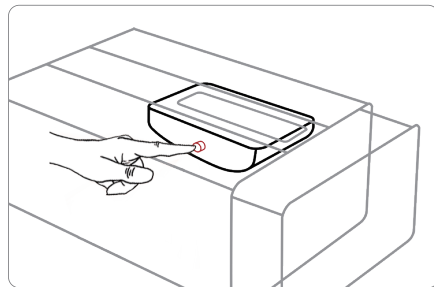
Stop alert: having successful finger vein recognition can stop the alert, or you can just wait the alert to stop after 20 seconds.

Attention

1. Every alert last for 20 seconds.
2. To enable or disable 'Vibration alert', please short press 'Reset button' 3 times in 3 seconds.

Factory setting

Open the safe, then long press the 'Reset button' inside for 6 seconds. There will be a voice guidance 'All finger vein removed. Please register new finger vein before use', indicating the safe has restored to factory setting.



Attention

All settings will be cleared after the safe is restored to factory setting. Please be careful with this operation!

Unlocking for emergency

1. The mechanical keys can be used to unlock the safe in an emergency.
2. If the safe has been kept unused for a long time, the battery voltage might get low. Please charge with USB power supply above 1 A for emergency unlocking.

Charging your smart safe box

This product doesn't include adaptor. Please use adaptors that are compliant with local safety regulations.

1. In case of low battery voltage, the yellow indicator light stays on.
2. In case that the safe enters into sleeping mode because of low battery voltage, yellow indicator light flickers, and there will be intermittent beeps to remind you to charge the safe. Please charge the safe with USB power supply of $5\text{ V} \pm 0.2\text{ V}$.
3. During charging, yellow indicator light stays on. There will be a beep after the safe is fully charged. The indicator light will be off.

FAQs

Q1: Why there is no beep when first use.

Possible causes: the power button was not pressed down, or low battery voltage.

Solutions: press the 'Power button' again. Wait for 5 seconds and confirm if there will be a beep. If no, please charge the safe with USB power supply of no less than 1 A.

Q2: The green light is on, while the draw didn't pop out.

Possible causes: low battery voltage.

Solutions: please retry for another 1-2 times. If failed, please try again after charging the safe.

Possible causes: mechanical failure, such as the internal structure got stuck somehow.

Solutions: unlock the safe with mechanical key. Try to pull out the drawer.

Possible causes: large elevation angle of the safe door.

Solutions: put the safe on a horizontal surface.

Q3: Frequent finger vein recognition failures.

Possible causes: when registering finger vein, the distal and proximal part of your finger are not close to the detection area, or you pressed your finger too hard. It might also be that you used single position when repeating the entering during finger vein registration.

Solutions: register finger vein again following measures as below:

1. Relax the muscles of your finger. Put the distal and proximal part of your finger on the detection area. Increase the number of entering to 5-10 times and try to get successful entering with different finger positions.
※ The successful recognition rate will increase as the times of entering finger vein increase. (Finger vein capacity of this product is 200 pieces.)
2. Try again after successful registration. Make sure the position of your finger is the same as when you do the registration.

Possible causes: too much dirt or abnormal substances accumulated on the finger vein collection window.

Solutions: wet a clean and soft cloth with neutral solvent such as water or alcohol. Clean the finger vein collection window. Then try again following the solutions of Q3.

Attention

1. Don't put mechanical key inside the safe at any time.
2. Please make sure the output current of USB power supply is no less than 1 A.
3. Don't unlock the safe under strong direct light.
4. Keep the finger vein collection window clean. If there is dirt or abnormal substance on it, please clean before use.
5. Due to the difference of fingers in physical structure and the limitation of finger vein recognition technology, it's possible that fingers that are too thin or bend too much can not be detected or recognized by the safe.

After-sales service

After-sales policies

Philips smart safe box warrants:

1. Return or replacement of products that have defects caused by non-human factors or force majeure within 7 days from the date of purchase;
2. Replacement or maintenance of products that have defects caused by non-human factors or force majeure within 8-15 days from the date of purchase;
3. Maintenance of products that have defects caused by non-human factors or force majeure within 24 months from the date of purchase;

This warranty does not apply to (including but not limited to):

1. Damages caused by unauthorized repairs, misuse, incorrect use, abuse, collision, negligence, fluid intake, accidents, modification and alterations;
2. Products with broken or altered labels, serial number and anti-counterfeit label;
3. Products out of warranty period;
4. Damages caused by force majeure;
5. Damages due to human factors.

After-sales support

If you encounter any problems when using the product, please contact local authorized distributors.

Warranty card

Product model		Product serial number	
Invoice No.		Seller	
Address of seller			
Date of sales		User name	
Contact of user		Address of user	
Failure description			
Maintenance records	Date	Issue	Maintenance staff
		User signature	