

# PHILIPS

## sonicare



Ultra soft interchangeable  
sonic brush heads

S2 Sensitive

Up to 10x more plaque removal

Up to 5x healthier gums

Ultra soft Bristle

Compatible with all Sonicare  
handles except Philips One and  
Kids



HX6054/10

## Ultra-soft brush head for sensitive teeth and gums

Replace every 3 months for optimal results

The S2 Sensitive brush head is tailor-made for sensitive teeth and gums. The ultra-thin bristles provide an effective clean with a gentle brushing experience. 70% of the plastic used in this brush head is bio-based\*

### Easy to use

- Always know when to replace your brush head
- Ready to connect with your Sonicare handle

### High performance

- Proven effectiveness with extra softness
- 70% bio-based plastic\*

### Designed for sensitive teeth and gums

- Removes 10x more plaque in hard-to-reach areas\*\*
- Gentler on teeth and gums
- Up to 5x healthier gums in 6 weeks\*\*\*

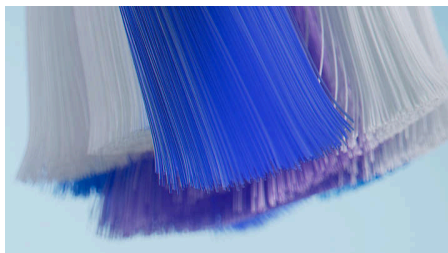
## S2 Sensitive

Ultra soft interchangeable sonic brush heads

HX6054/10

# Highlights

### Ultra-thin bristles



With the thinnest bristles of any Sonicare brush head (0.1 mm), the S2 Sensitive delivers a gentle yet effective brushing experience.

### Uniquely soft design



With more than 3.000 ultra-thin bristles the brush head is uniquely designed to provide an extra soft, yet effective clean that removes 10x more plaque in hard-to-reach areas.\*\*

### Extra care for your gums



As you brush your teeth, the extra soft bristles will also gently brush your gum line, for improved gum health in just six weeks.

### Uses bio-based plastic



We are working towards reducing the use of fossil-fuel based plastic in our products. That's why 70% of the plastic used in this brush head is bio-based.\*

### Trusted Sonicare brushing



Always achieve the highest cleaning performance with Philips Sonicare's advanced sonic technology. Through its extra-soft bristles,

the S2 Sensitive brush head is clinically proven to remove plaque effectively, while being gentle on your gums.

### Replacement reminder



Brush heads become less effective after three months of use. With BrushSync you'll be reminded precisely when to replace your brush head, tailored to your brushing behaviour.

### Click-on design



This click-on brush head fits perfectly with your Philips Sonicare handle (check the list below). Its click-on design makes cleaning and replacing the head incredibly simple.

## S2 Sensitive

Ultra soft interchangeable sonic brush heads

HX6054/10

# Specifications

### Design and finishing

**Bristle stiffness feel:** Ultra soft

**Colour:** White

**Reminder bristles:** Blue bristle colour fades away

**Size:** Standard

**Smart Brush Head Recognition**

### Compatibility

**Brush head system:** Click-on

**Suitable for these models:** 2 Series plaque defence, 2 Series plaque defence, 3 Series gum

health, DiamondClean, DiamondClean 9000, DiamondClean Smart, EasyClean, Essence+, ExpertClean, ExpertResults, FlexCare, FlexCare Platinum, FlexCare Platinum Connected, FlexCare+, for Kids, HealthyWhite, HealthyWhite+, PowerUp, Prestige 9900, ProtectiveClean, Series 1100, Series 3100, 2100 Series

**Not suitable for:** Philips One, Essence

### Items included

**Brush heads:** 4 S2 Sensitive brush heads

### Quality and performance

**Replacement:** Every 3 months

**Tested:** for optimal usage

