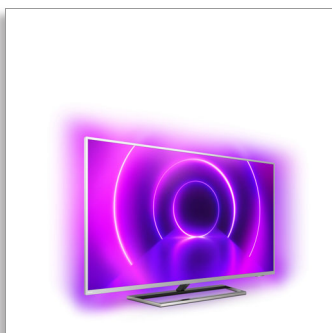




Philips LED  
4K UHD LED Android TV

146 cm (58") Ambilight TV

Major HDR formats supported  
P5 Perfect Picture Engine  
Android TV/AI voice control



58PUS9005

## All-round immersion

### 4K UHD LED Android TV with Ambilight

Everything you need for movie night, sports or an all-night gaming session with friends. Superb picture. Great sound. Voice control. Ambilight surrounds the TV for a viewing experience so immersive you'll never want to watch without it

#### **Android TV-content at your command**

- Android TV. Simply smart.
- Voice control. Google Assistant built-in. Works with Alexa.
- DTS Play-Fi. Multi-room audio.

#### **Slim TV. Beautiful light.**

- Philips 4K UHD TV. Vibrant HDR picture.
- Ambilight. All-round immersion.
- Silver metal bezel. Dark chrome swivel stand.

#### **Smooth motion. Real colour. Incredible depth.**

- Dolby Vision and Dolby Atmos. Cinematic vision and sound.
- Philips P5 Engine. Whatever the source, always perfection.
- HDR10+ supported. See more of what the director intended.
- Well-balanced audio. Crisp, clear dialogue. Punchy effects.

# PHILIPS

## 4K UHD LED Android TV

146 cm (58") Ambilight TV Major HDR formats supported, P5 Perfect Picture Engine, Android TV/AI voice control

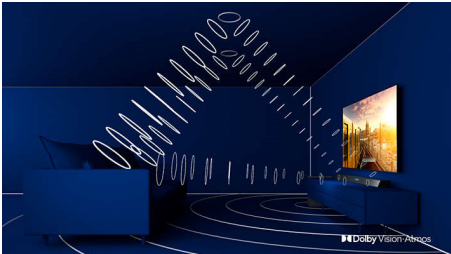
# Highlights

### Ambilight 4 sided



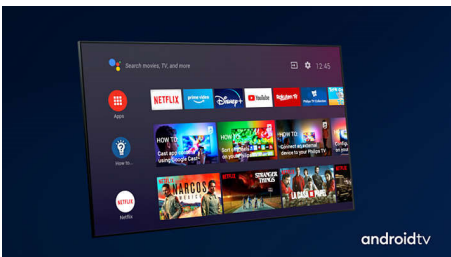
Philips Ambilight brings the emotion right into your room. Intelligent LEDs around each edge of the TV set the mood by casting on-screen colours onto your walls in real time. Enjoy an immersive viewing experience you won't find anywhere else.

### Dolby Vision and Dolby Atmos



Support for Dolby's premium sound and video formats means the HDR content you watch will look—and sound—gloriously real. Whether it's the latest streaming series or a Blu-Ray disc set, you'll enjoy contrast, brightness and colour that reflect the director's original intentions. And hear spacious sound with clarity, detail and depth.

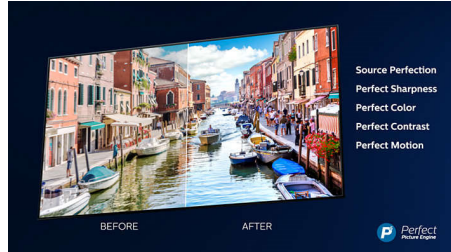
### Android TV.



Make your Philips Android TV your own. If it's all about Amazon and YouTube this week and Rakuten TV and Netflix next week - no problem. A clear, intuitive interface lets you put the content you love front and centre.

Easily pick up where you left off in the latest series, or check out the new movie releases.

### P5 Perfect Picture Engine



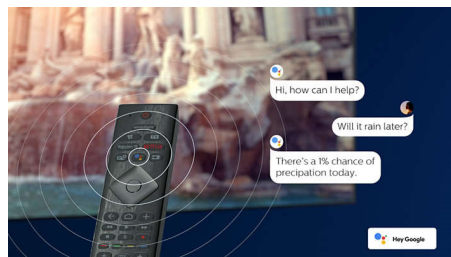
The Philips P5 engine delivers a picture as brilliant as the content you love. Details have noticeably more depth. Colours are vivid, while skin tones look natural. Contrast is so crisp you'll feel every detail. Motion is perfectly smooth.

### 4K UHD HDR



Your Philips 4K UHD TV is compatible with all major HDR formats, including HDR10+ and Dolby Vision. Whether it's a must-watch series or the latest video game, shadows will be deeper. Bright surfaces will shine. Colours will be truer.

### Voice assistant

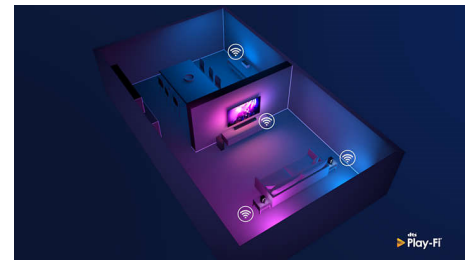


Control your Philips Android TV with your voice. Want to play a game, watch Netflix or find content and apps in the Google Play store? Just tell your TV. You can even command all

58PUS9005/12

Google Assistant-compatible smart home devices, like dimming the lights and setting the thermostat on movie night. Without leaving the sofa. The days of searching for the TV remote are over. Now you can use your voice to control your Philips smart TV via Alexa-enabled devices, like Amazon Echo. Turn your TV on, change the channel, switch to your gaming console and more with Alexa.

### DTS Play-Fi

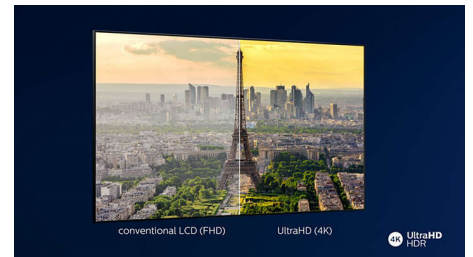


With DTS Play-Fi on your Philips TV you can connect to compatible speakers in any room. Got wireless speakers in the kitchen? Listen to the film while you make a snack, or keep up with the sports commentary while you get everyone a drink.

### Design

Silver metal bezel. Dark chrome swivel stand.

### HDR10+ supported



Your Philips TV is primed to get the most out of the HDR10+ video format. Contrast, colour and brightness levels are adjusted from frame to frame. Whether it's a must-watch series or the new blockbuster, shadows will be deeper. Bright surfaces will shine. Colours will be truer.

### Well-balanced audio

Well-balanced audio. Crisp, clear dialogue. Punchy effects.



Dolby Vision-Atmos

androidtv



## 4K UHD LED Android TV

146 cm (58") Ambilight TV Major HDR formats supported, P5 Perfect Picture Engine, Android TV/AI voice control

58PUS9005/12

# Specifications

### Ambilight

- Ambilight Features: Built-in Ambilight+hue, Ambilight Music, Game Mode, Wall colour adaptive, Lounge mode, AmbiWakeup, AmbiSleep
- Ambilight Version: 4 sided

### Picture/Display

- Aspect ratio: 16:9
- Diagonal screen size (inch): 58 inch
- Diagonal screen size (metric): 146 cm
- Display: 4K Ultra HD LED

- Panel resolution: 3840 x 2160
- Picture engine: P5 Perfect Picture Engine
- Picture enhancement: Ultra Resolution, HDR10+, Dolby Vision, 2200 PPI
- Diagonal screen size (inch): 58 inch

### Supported Display Resolution

- Computer inputs on all HDMI: HDR supported, HDR10/HLG, up to 4K UHD 3840 x 2160 @60 Hz
- Video inputs on all HDMI: up to 4K UHD 3840 x

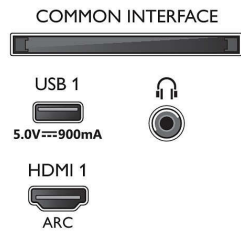
2160 @60 Hz, HDR supported, HDR10/HLG (Hybrid Log Gamma), HDR10+/Dolby Vision

### Tuner/Reception/Transmission

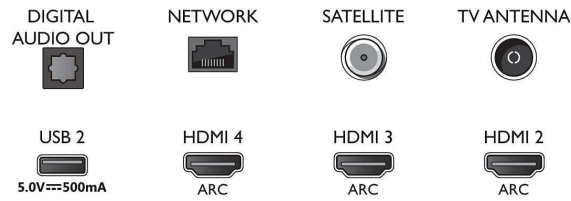
- Digital TV: DVB-T/T2/T2-HD/C/S/S2
- Video Playback: PAL, SECAM
- MPEG Support: MPEG2, MPEG4
- TV Programme guide\*: 8-day Electronic Programme Guide
- Signal strength indication

## Connections

### Side



### Bottom



## 4K UHD LED Android TV

146 cm (58") Ambilight TV Major HDR formats supported, P5 Perfect Picture Engine, Android TV/AI voice control

58PUS9005/12

# Specifications

- Teletext: 1000 page Hypertext
- HEVC support

### Android TV

- OS: Android TV™ 9 (Pie)
- Pre-installed apps: Google Play Movies\*, Google Play Music\*, Google Search, YouTube, Netflix, Amazon instant video, BBC iPlayer
- Memory size (Flash): 16 GB\*

### Smart TV Features

- User Interaction: SimplyShare
- Interactive TV: HbbTV
- Programme: Pause TV, USB recording\*
- Ease of Installation: Auto detect Philips devices, Device connection wizard, Network installation wizard, Settings assistant wizard
- Ease of Use: One-stop smart menu button, On-screen user manual
- Firmware upgradeable: Firmware auto upgrade wizard, Firmware upgradeable via USB, Online firmware upgrade
- Screen Format Adjustments: Basic - Fill Screen, Fit to screen, Advance - Shift, Zoom, stretch, Wide screen
- Remote Control: with Voice
- Voice assistant\*: Google Assistant built in, RC with Mic., Works with Alexa

### Multimedia Applications

- Video Playback Formats: Containers: AVI, MKV, H264/MPEG-4 AVC, MPEG-1, MPEG-2, MPEG-4, WMV9/VC1, VP9, HEVC (H.265)
- Music Playback Formats: AAC, MP3, WAV, WMA (v2 up to v9.2), WMA-PRO (v9 and v10)
- Subtitles Formats Support: .SRT, .SUB, .TXT, .SMI
- Picture Playback Formats: JPEG, BMP, GIF, PNG, 360 photo, HEIF

### Processing

- Processing Power: Quad Core

### Sound

- Output power (RMS): 20 W
- Speaker configuration: 2 x 10 W full-range speaker
- Sound Enhancement: Auto Volume Leveller, Dolby Atmos®, 5 Band Equalizer, A.I. Sound, Bass Enhancement, Clear Dialogue, Night mode

### Connectivity

- Number of HDMI connections: 4
- HDMI features: 4K, Audio Return Channel
- EasyLink (HDMI-CEC): Remote control pass-through, System audio control, System standby, One touch play
- Number of USBs: 2

- Wireless connection: Bluetooth 4.2, Wi-Fi 802.11ac, 2 x 2, Dual band
- Other connections: Satellite Connector, Common Interface Plus (CI+), Digital audio out (optical), Ethernet-LAN RJ-45, Headphone out, Service connector
- HDCP 2.3: Yes on all HDMI

### EU Energy card

- EPREL registration numbers: 355202
- Diagonal screen size (inch): 58
- Diagonal screen size (metric): 146
- Energy class for SDR: G
- On mode power demand for SDR: 87 kWh/1000h
- Energy class for HDR: G
- On mode power demand for HDR: 170 kWh/1000h
- Off mode power consumption: n.a.
- Networked standby mode: <math>2.0\text{ W}</math>
- Panel technology used: LED LCD

### Power

- Mains power: AC 220 - 240 V 50/60 Hz
- Ambient temperature: 5°C to 35°C
- Standby power consumption: <math>0.3\text{ W}</math>
- Power Saving Features: Auto switch-off timer, Picture mute (for radio), Light sensor, Eco mode
- Off mode power consumption: N/A

### Accessories

- Included accessories: Remote Control, Quick start guide, Legal and safety brochure, Power cord, Tabletop stand
- Included batteries: 2 x AAA Batteries

### Design

- Colours of TV: Light-silver metal bezel
- Stand design: Dark chrome open frame stand

### Dimensions

- Set Width: 1298.7 mm
- Set Height: 765.1 mm
- Set Depth: 81.9 mm
- Product weight: 17.9 kg
- Set width (with stand): 1298.7 mm
- Set height (with stand): 830.1 mm
- Set depth (with stand): 253.6 mm
- Product weight (+stand): 21.0 kg
- Box width: 1445 mm
- Box height: 880.0 mm
- Box depth: 160.0 mm
- Weight incl. Packaging: 26.0 kg
- Stand width: 750.0 mm
- Stand height: 65.0 mm
- Stand depth: 253.6 mm
- Wall-mount compatible: 300 x 200 mm



Issue date 2023-08-22

Version: 7.0.2

EAN: 87 18863 02484 3

© 2023 Koninklijke Philips N.V.  
All Rights reserved.

Specifications are subject to change without notice.  
Trademarks are the property of Koninklijke Philips N.V.  
or their respective owners.

[www.philips.com](http://www.philips.com)

\* EPG and actual visibility (up to 8 days) is country- and operator-dependent.

\* Android App offerings vary per country. For more details please visit your local Google Play Store.

\* Memory size (Flash): 16 G, the actual available disc space may differ (dependant on e.g. (pre-)installed apps, installed operating system, etc.)

\* The TV supports DVB reception for 'Free to air' broadcast. Specific DVB operators may not be supported. An up to date list can be found in the FAQ section of the Philips support website. For some operators Conditional Access and subscription are required. Contact your operator for more information.

\* Philips TV Remote app and related functionalities vary per TV model, operator and country, as well as smart device model and OS. For more details please visit: [www.philips.com/TVRemoteapp](http://www.philips.com/TVRemoteapp).

\* Smart TV app availability varies per TV model and country. For more details please visit: [www.philips.com/smartv](http://www.philips.com/smartv).

\* USB recording for digital channels only, recordings may be limited by broadcast copy protection (CI+). Country and channel restrictions may apply.

\* Please note that your Amazon Apps may not always be available in your country. (Currently Amazon apps works only in the UK, Germany and Austria)

\* This television contains lead only in certain parts or components where no technology alternatives exist in accordance with existing exemption clauses under the RoHS Directive.