



Philips Performance Series
4K UHD LED Android TV

164 cm (65") Ambilight TV

Major HDR formats supported
P5 Perfect Picture Engine
Android TV/AI voice control



65PUS8545

Performance Series: the one to watch

4K UHD LED Android TV

This is the one you are looking for. Superb picture quality. Elegant design. Great sound. AI voice control. Ambilight for an immersive experience like no other. Everything you need to enjoy movie night, sports or a weekend gaming marathon

Android TV-content at your command

- Android TV. Simply smart.
- Voice control. Google Assistant built-in. Works with Alexa.
- DTS Play-Fi. Multi-room audio.

Slim TV. Beautiful light.

- Philips 4K UHD TV. Vibrant HDR picture.
- Silver metal bezel. Central arch stand.
- The magic of Ambilight. Only from Philips.

Smooth motion. Real colour. Incredible depth.

- Philips P5 Engine. Whatever the source, always perfection.
- HDR10+ supported. See more of what the director intended.
- Dolby Vision and Dolby Atmos. Cinematic vision and sound.
- Well-balanced audio. Crisp, clear dialogue. Punchy effects.

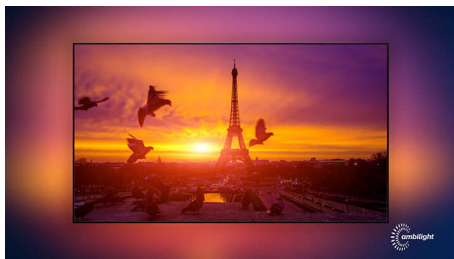
PHILIPS

4K UHD LED Android TV

164 cm (65") Ambilight TV Major HDR formats supported, P5 Perfect Picture Engine, Android TV/AI voice control

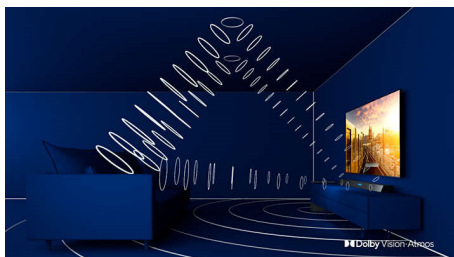
Highlights

Ambilight 3 sided



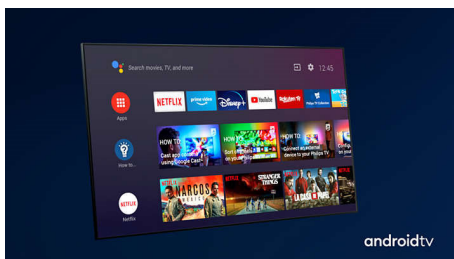
With Philips Ambilight, every moment feels closer. Intelligent LEDs around the edge of the TV respond to the on-screen action and emit an immersive glow that's simply captivating. Experience it once and wonder how you enjoyed TV without it.

Dolby Vision and Dolby Atmos



Support for Dolby's premium sound and video formats means the HDR content you watch will look—and sound—gloriously real. Whether it's the latest streaming series or a Blu-Ray disc set, you'll enjoy contrast, brightness and colour that reflect the director's original intentions. And hear spacious sound with clarity, detail and depth.

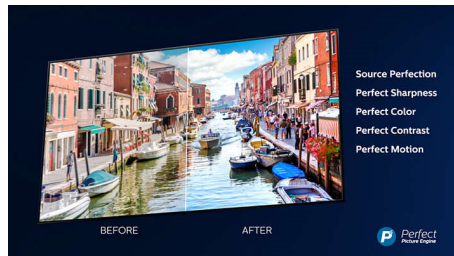
Android TV.



Make your Philips Android TV your own. If it's all about Amazon and YouTube this week and Rakuten TV and Netflix next week - no problem. A clear, intuitive interface lets you put the content you love front and centre.

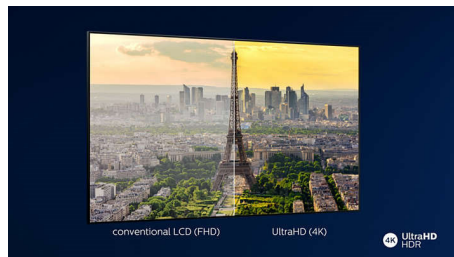
Easily pick up where you left off in the latest series, or check out the new movie releases.

P5 Perfect Picture Engine



The Philips P5 engine delivers a picture as brilliant as the content you love. Details have noticeably more depth. Colours are vivid, while skin tones look natural. Contrast is so crisp you'll feel every detail. Motion is perfectly smooth.

4K UHD HDR

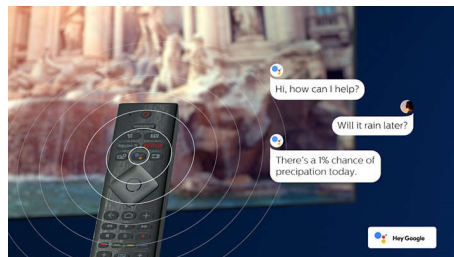


Your Philips 4K UHD TV is compatible with all major HDR formats, including HDR10+ and Dolby Vision. Whether it's a must-watch series or the latest video game, shadows will be deeper. Bright surfaces will shine. Colours will be truer.

Design

Silver metal bezel. Central arch stand.

Voice assistant

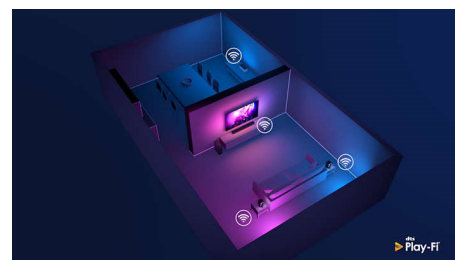


Control your Philips Android TV with your voice. Want to play a game, watch Netflix or

65PUS8545/12

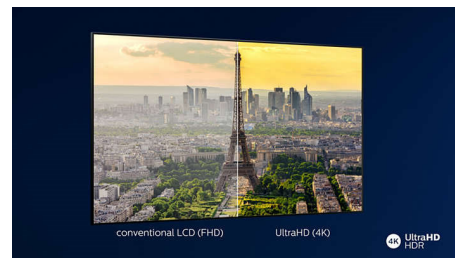
find content and apps in the Google Play store? Just tell your TV. You can even command all Google Assistant-compatible smart home devices, like dimming the lights and setting the thermostat on movie night. Without leaving the sofa. The days of searching for the TV remote are over. Now you can use your voice to control your Philips smart TV via Alexa-enabled devices, like Amazon Echo. Turn your TV on, change the channel, switch to your gaming console and more with Alexa.

DTS Play-Fi



With DTS Play-Fi on your Philips TV you can connect to compatible speakers in any room. Got wireless speakers in the kitchen? Listen to the film while you make a snack, or keep up with the sports commentary while you get everyone a drink.

HDR10+ supported



Your Philips TV is primed to get the most out of the HDR10+ video format. Contrast, colour and brightness levels are adjusted from frame to frame. Whether it's a must-watch series or the new blockbuster, shadows will be deeper. Bright surfaces will shine. Colours will be truer.

Well-balanced audio

Well-balanced audio. Crisp, clear dialogue. Punchy effects.



androidtv



Specifications

Ambilight

- Ambilight Features: Built-in Ambilight+hue, Ambilight Music, Game Mode, Wall colour adaptive, Lounge mode, AmbiWakeup, AmbiSleep
- Ambilight Version: 3 sided

Picture/Display

- Aspect ratio: 16:9
- Diagonal screen size (inch): 65 inch
- Diagonal screen size (metric): 164 cm
- Display: 4K Ultra HD LED

- Panel resolution: 3840 x 2160
- Picture engine: P5 Perfect Picture Engine
- Picture enhancement: Ultra Resolution, Dolby Vision, HDR10+, 2100 PPI
- Diagonal screen size (inch): 65 inch

Supported Display Resolution

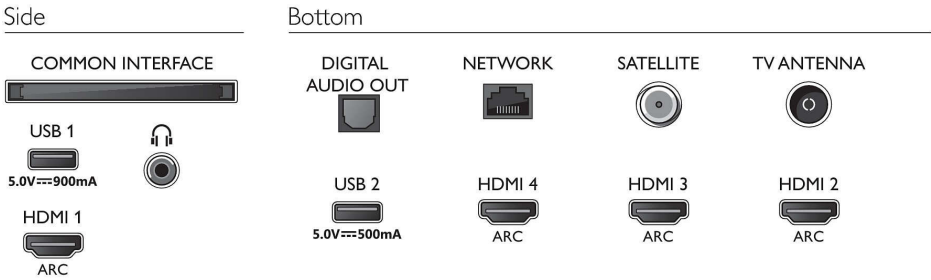
- Computer inputs on all HDMI: HDR supported, HDR10/HLG, up to 4K UHD 3840 x 2160 @60 Hz
- Video inputs on all HDMI: up to 4K UHD 3840 x

2160 @60 Hz, HDR supported, HDR10/HLG (Hybrid Log Gamma), HDR10+/Dolby Vision

Tuner/Reception/Transmission

- Digital TV: DVB-T/T2/T2-HD/C/S/S2
- Video Playback: PAL, SECAM
- MPEG Support: MPEG2, MPEG4
- TV Programme guide*: 8-day Electronic Programme Guide
- Signal strength indication

Connections



4K UHD LED Android TV

164 cm (65") Ambilight TV Major HDR formats supported, P5 Perfect Picture Engine, Android TV/AI voice control

65PUS8545/12

Specifications

- Teletext: 1000 page Hypertext
- HEVC support

Android TV

- OS: Android TV™ 9 (Pie)
- Pre-installed apps: Google Play Movies*, Google Play Music*, Google Search, YouTube, Amazon instant video, BBC iPlayer, Netflix
- Memory size (Flash): 16 GB*

Smart TV Features

- User Interaction: SimplyShare
- Interactive TV: HbbTV
- Programme: Pause TV, USB recording*
- Ease of Installation: Auto detect Philips devices, Device connection wizard, Network installation wizard, Settings assistant wizard
- Ease of Use: One-stop smart menu button, On-screen user manual
- Firmware upgradeable: Firmware auto upgrade wizard, Firmware upgradeable via USB, Online firmware upgrade
- Screen Format Adjustments: Basic - Fill Screen, Fit to screen, Advance - Shift, Zoom, stretch, Wide screen
- Remote Control: with Voice
- Voice assistant*: Google Assistant built in, RC with Mic., Works with Alexa

Multimedia Applications

- Video Playback Formats: Containers: AVI, MKV, H264/MPEG-4 AVC, MPEG-1, MPEG-2, MPEG-4, WMV9/VC1, VP9, HEVC (H.265)
- Music Playback Formats: AAC, MP3, WAV, WMA (v2 up to v9.2), WMA-PRO (v9 and v10)
- Subtitles Formats Support: .SRT, .SUB, .TXT, .SMI
- Picture Playback Formats: JPEG, BMP, GIF, PNG, 360 photo, HEIF

Processing

- Processing Power: Quad Core

Sound

- Output power (RMS): 20 W
- Speaker configuration: 2 x 10 W full-range speaker
- Sound Enhancement: Auto Volume Leveller, Dolby Atmos®, 5 Band Equalizer, A.I. Sound, Bass Enhancement, Clear Dialogue, Night mode

Connectivity

- Number of HDMI connections: 4
- HDMI features: 4K, Audio Return Channel
- EasyLink (HDMI-CEC): Remote control pass-through, System audio control, System standby, One touch play
- Number of USBs: 2
- Wireless connection: Bluetooth 4.2, Wi-Fi 802.11ac, 2 x 2, Dual band

- Other connections: Satellite Connector, Common Interface Plus (CI+), Digital audio out (optical), Ethernet-LAN RJ-45, Headphone out, Service connector
- HDCP 2.3: Yes on all HDMI

EU Energy card

- EPREL registration numbers: 357481
- Diagonal screen size (inch): 65
- Energy class for SDR: G
- Diagonal screen size (metric): 164
- On mode power demand for SDR: 107 kWh/1000h
- Energy class for HDR: G
- On mode power demand for HDR: 209 kWh/1000h
- Off mode power consumption: n.a.
- Networked standby mode: <2.0 W
- Panel technology used: LED LCD

Power

- Mains power: AC 220 - 240 V 50/60 Hz
- Ambient temperature: 5°C to 35°C
- Standby power consumption: <0.3 W
- Power Saving Features: Auto switch-off timer, Light sensor, Picture mute (for radio), Eco mode
- Off mode power consumption: N/A
- Presence of lead: Yes*
- Mercury content: 0 mg

Accessories

- Included accessories: Remote Control, Quick start guide, Legal and safety brochure, Power cord, Tabletop stand
- Included batteries: 2 x AAA Batteries

Design

- Colours of TV: Light-silver metal bezel
- Stand design: Silver chrome arch stand

Dimensions

- Set Width: 1459.3 mm
- Set Height: 841.3 mm
- Set Depth: 86.4 mm
- Product weight: 26.6 kg
- Set width (with stand): 1459.3 mm
- Set height (with stand): 911.3 mm
- Set depth (with stand): 269.4 mm
- Product weight (+stand): 29.2 kg
- Box width: 1600.0 mm
- Box height: 995.0 mm
- Box depth: 170.0 mm
- Weight incl. Packaging: 32.8 kg
- Stand width: 900.0 mm
- Stand height: 70.0 mm
- Stand depth: 269.4 mm
- Wall-mount compatible: 400 x 200 mm



Issue date 2023-08-17

Version: 8.2.1

EAN: 87 18863 02310 5

© 2023 Koninklijke Philips N.V.
All Rights reserved.

Specifications are subject to change without notice.
Trademarks are the property of Koninklijke Philips N.V.
or their respective owners.

www.philips.com

* EPG and actual visibility (up to 8 days) is country- and operator-dependent.

* Android App offerings vary per country. For more details please visit your local Google Play Store.

* Energy consumption in kWh per year based on the power consumption of the television operating 4 hours per day for 365 days. The actual energy consumption will depend on how the television is used.

* The TV supports DVB reception for 'Free to air' broadcast. Specific DVB operators may not be supported. An up to date list can be found in the FAQ section of the Philips support website. For some operators Conditional Access and subscription are required. Contact your operator for more information.

* Philips TV Remote app and related functionalities vary per TV model, operator and country, as well as smart device model and OS. For more details please visit: www.philips.com/TVRemoteapp.

* Smart TV app availability varies per TV model and country. For more details please visit: www.philips.com/smarttv.

* USB recording for digital channels only, recordings may be limited by broadcast copy protection (CI+). Country and channel restrictions may apply.

* Please note that your Amazon Apps may not always be available in your country. (Currently Amazon apps works only in the UK, Germany and Austria)

* This television contains lead only in certain parts or components where no technology alternatives exist in accordance with existing exemption clauses under the RoHS Directive.

* *Memory size (Flash): 16 GB (the actual available disk space may differ depending on e.g. (pre-)installed apps, installed operating system etc.)