



Philips OLED
4K UHD OLED Android
TV

P5 AI perfect picture engine
Dolby Atmos cinematic sound
Ambilight 3 sided
164 cm (65") Android TV



65OLED805

Sophisticated performance. Minimalist design.

4K UHD OLED Android TV

Immerse yourself in a sharp, polished picture with natural colours and rich contrast. This slim, elegant Philips 4K OLED TV brings lifelike depth and fluid motion to the content you love. Ambilight completes the picture beautifully.

Smooth motion. True colour. Incredible depth.

- Dolby Vision and Dolby Atmos. Cinematic vision and sound.
- Major HDR formats. See more of what the director intended.
- P5 engine with AI. Whatever you watch, a picture so real.

Designed to mesmerise.

- Muirhead leather-backed remote control with backlit keys.
- The magic of Ambilight. Only from Philips.
- Stand height adjustable to accommodate a soundbar.
- Philips OLED TV. This is what lifelike feels like.

Content at your command.

- Android TV. Simply smart.
- DTS Play-Fi. Multi-room audio.
- Voice control. Google Assistant built-in. Works with Alexa.

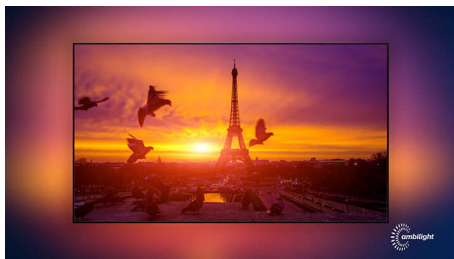
PHILIPS

4K UHD OLED Android TV

P5 AI perfect picture engine Dolby Atmos cinematic sound, Ambilight 3 sided, 164 cm (65") Android TV

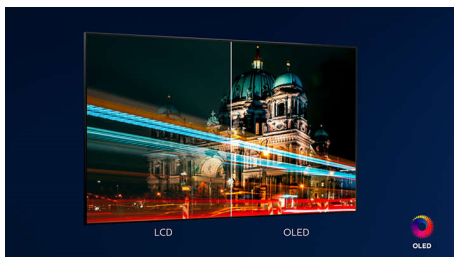
Highlights

Ambilight 3 sided



With Philips Ambilight, every moment feels closer. Intelligent LEDs around the edge of the TV respond to the on-screen action and emit an immersive glow that's simply captivating. Experience it once and wonder how you enjoyed TV without it.

Philips OLED TV



With a Philips OLED TV, you get a wider viewing angle and a uniquely lifelike HDR picture where every scene feels impressively real. Blacks are deeper, colours are more vibrant and details in shadows and highlights are precisely reproduced.

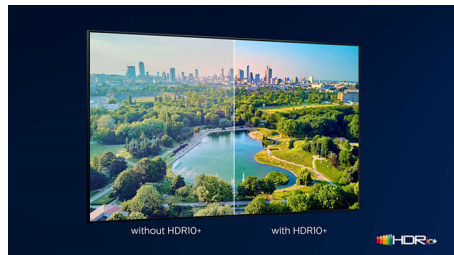
P5 engine with AI.



Philips P5 processor with AI delivers a picture so real that it feels like you could step right into

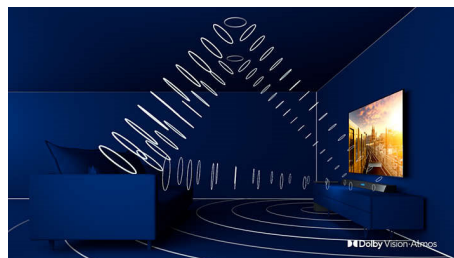
it. A deep-learning AI algorithm processes images in a manner similar to the human brain. No matter what you're watching, you get lifelike detail and contrast, rich colour and smooth motion.

Major HDR formats supported



A Philips 4K UHD OLED TV is compatible with all major HDR formats, including HDR10+ and Dolby Vision. Whether it's a must-watch series or the latest video game, shadows will be deeper. Bright surfaces will shine. Colours will be truer. Motion is incredibly smooth.

Dolby Vision and Dolby Atmos



Support for Dolby's premium sound and video formats means the HDR content you watch will look—and sound—gloriously real. Whether it's the latest streaming series or a Blu-Ray disc set, you'll enjoy contrast, brightness and colour that reflect the director's original intentions. And hear spacious sound with clarity, detail and depth.

65OLED805/12

Design

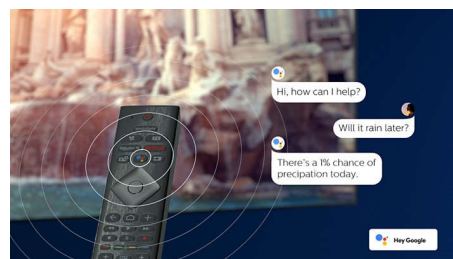
Muirhead leather-backed remote control with backlit keys.

Android TV



Your Philips Android TV gives you the content you want—when you want it. You can customise the home screen to display your favourite apps, making it simple to start streaming the movies and shows you love. Or pick up where you left off.

Voice assistant



Control your Philips Android TV with your voice. Want to play a game, watch Netflix or find content and apps in the Google Play store? Just tell your TV. You can even command all Google Assistant-compatible smart home devices, like dimming the lights and setting the thermostat on movie night. Without leaving the sofa. The days of searching for the TV remote are over. Now you can use your voice to control your Philips smart TV via Alexa-enabled devices, like Amazon Echo. Turn your TV on, change the channel, switch to your gaming console and more with Alexa.



Specifications

Ambilight

- Ambilight Features: Built-in Ambilight+hue, Ambilight Music, Game Mode, Wall colour adaptive, Lounge mode, AmbiWakeup, AmbiSleep
- Ambilight Version: 3 sided

Picture/Display

- Aspect ratio: 16:9
- Diagonal screen size (inch): 65 inch
- Diagonal screen size (metric): 164 cm
- Display: 4K Ultra HD OLED
- Panel resolution: 3840 x 2160

- Picture engine: P5 AI Perfect Picture Engine
- Picture enhancement: Ultra Resolution, Wide Colour Gamut 99% DCI/P3, Dolby Vision, HDR10+, Perfect Natural Motion, 5700 PPI
- Diagonal screen size (inch): 65 inch

Supported Display Resolution

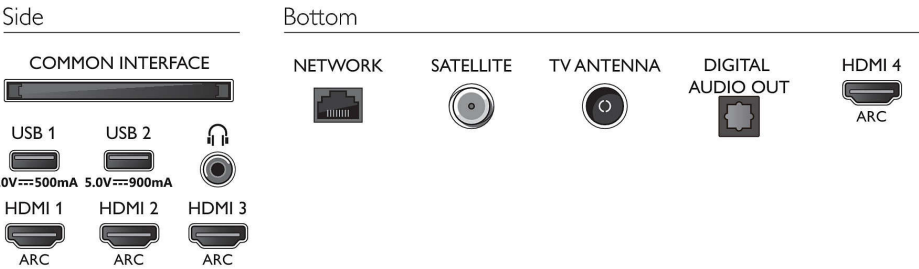
- Computer inputs on all HDMI: HDR supported, HDR10+/HLG, HDR supported, HDR10/HLG, up to 4K UHD 3840 x 2160 @60 Hz
- Video inputs on all HDMI: HDR supported, HDR10/HLG (Hybrid Log Gamma), HDR10+/-

Dolby Vision, up to 4K UHD 3840 x 2160 @60 Hz

Tuner/Reception/Transmission

- Digital TV: DVB-T/T2/T2-HD/C/S/S2
- Video Playback: PAL, SECAM
- MPEG Support: MPEG2, MPEG4
- TV Programme guide*: 8-day Electronic Programme Guide
- Signal strength indication
- Teletext: 1000 page Hypertext
- HEVC support

Connections



Specifications

Android TV

- OS: Android TV™ 9 (Pie)
- Pre-installed apps: Google Play Movies*, Google Play Music*, Google Search, YouTube, Amazon instant video, BBC iPlayer, Netflix
- Memory size (Flash): 16 GB*

Smart TV Features

- User Interaction: SimplyShare
- Interactive TV: HbbTV
- Programme: Pause TV, USB recording*
- Ease of Installation: Auto detect Philips devices, Network installation wizard, Settings assistant wizard, Device connection wizard
- Ease of Use: One-stop smart menu button, On-screen user manual
- Firmware upgradeable: Firmware auto upgrade wizard, Firmware upgradeable via USB, Online firmware upgrade
- Screen Format Adjustments: Basic - Fill Screen, Fit to screen, Advance - Shift, Zoom, stretch, Wide screen
- Remote Control: with Voice, with Key light, with Muirhead leather
- Voice assistant*: Google Assistant built in, RC with Mic., Works with Alexa

Multimedia Applications

- Video Playback Formats: Containers: AVI, MKV, H264/MPEG-4 AVC, MPEG-1, MPEG-2, MPEG-4, WMV9/VC1, VP9, HEVC (H.265)
- Music Playback Formats: AAC, MP3, WAV, WMA (v2 up to v9.2), WMA-PRO (v9 and v10)
- Subtitles Formats Support: .SRT, .SUB, .TXT, .SMI
- Picture Playback Formats: JPEG, BMP, GIF, PNG, 360 photo, HEIF

Processing

- Processing Power: Quad Core

Sound

- Audio: Output power: 50 Watt (RMS), 2.1 Channel
- Speaker configuration: 10 W x 2 mid-high speaker, 30 W sub-woofer
- Codec: AC-4, Dolby Atmos®, Dolby Digital MS12 V2.3, DTS-HD(M6)
- Sound Enhancement: 5 Band Equalizer, A.I. Sound, Clear Dialogue, Dolby Atmos®, Dolby Bass Enhancement, Dolby Volume Leveller, Night mode, Auto Volume Leveller, Bass Enhancement

Connectivity

- Number of HDMI connections: 4
- HDMI features: 4K, Audio Return Channel
- EasyLink (HDMI-CEC): Remote control pass-through, System audio control, System standby, One touch play

- Number of USBs: 2
- Wireless connection: Bluetooth 4.2, Wi-Fi 802.11ac, 2 x 2, Dual band
- Other connections: Common Interface Plus (CI+), Digital audio out (optical), Ethernet-LAN RJ-45, Headphone out, Satellite Connector, Service connector
- HDCP 2.3: Yes on all HDMI

EU Energy card

- Diagonal screen size (inch): 65
- EPREL registration numbers: 421959
- Diagonal screen size (metric): 164
- Energy class for SDR: G
- On mode power demand for SDR: 137 kWh/1000h
- Energy class for HDR: F
- On mode power demand for HDR: 96 kWh/1000h
- Off mode power consumption: n.a.
- Networked standby mode: <2.0 W
- Panel technology used: OLED

Power

- Mains power: AC 220 - 240 V 50/60 Hz
- Ambient temperature: 5°C to 35°C
- Standby power consumption: <0.3 W
- Power Saving Features: Auto switch-off timer, Light sensor, Picture mute (for radio), Eco mode
- Off mode power consumption: N/A

Accessories

- Included batteries: 2 x AAA Batteries
- Included Accessories: Legal and safety brochure, Power cord, Quick start guide (x 1), Remote Control, Tabletop stand

Design

- Colours of TV: Gun metal grey frame
- Stand design: Dark chrome chrome sticks

Dimensions

- Set Width: 1448.7 mm
- Set Height: 829.5 mm
- Set Depth: 58.0 mm
- Product weight: 27.9 kg
- Set width (with stand): 1448.7 mm
- Set height (with stand): 897.0 mm
- Set depth (with stand): 280.0 mm
- Product weight (+stand): 28.4 kg
- Box width: 1660.0 mm
- Box height: 1002.0 mm
- Box depth: 174 mm
- Weight incl. Packaging: 36.6 kg
- Stand width: 792.0 mm
- Stand depth: 280.0 mm
- Wall-mount compatible: 300 x 300 mm
- Adjustable stand height (Max.): 67.8 mm
- Adjustable stand height (Min.): 16.8 mm



Issue date 2024-03-24

Version: 15.4.1

EAN: 87 18863 02280 1

© 2024 Koninklijke Philips N.V.
All Rights reserved.Specifications are subject to change without notice.
Trademarks are the property of Koninklijke Philips N.V.
or their respective owners.www.philips.com

* **Memory size (Flash): 16 GB (the actual available disk space may differ depending on e.g. (pre-)installed apps, installed operating system etc.)

* EPG and actual visibility (up to 8 days) is country- and operator-dependent.

* Android App offerings vary per country. For more details please visit your local Google Play Store.

* The TV supports DVB reception for 'Free to air' broadcast. Specific DVB operators may not be supported. An up to date list can be found in the FAQ section of the Philips support website. For some operators Conditional Access and subscription are required. Contact your operator for more information.

* Philips TV Remote app and related functionalities vary per TV model, operator and country, as well as smart device model and OS. For more details please visit: www.philips.com/TVRemoteapp.* Smart TV app availability varies per TV model and country. For more details please visit: www.philips.com/smarttv.

* USB recording for digital channels only, recordings may be limited by broadcast copy protection (CI+). Country and channel restrictions may apply.

* This television contains lead only in certain parts or components where no technology alternatives exist in accordance with existing exemption clauses under the RoHS Directive.