

# PHILIPS

## Series 7000

### All-in-One Trimmer

13in1: face, head & body

Precision trimming comb

Self-sharpening steel blades

BeardSense technology



MG7920/15



## One tool, ultimate precision

For face, hair & body

Craft your personal look with this versatile trimmer, which includes 13 quality tools for styling your face, head and body. The precision trimming comb delivers a consistent trim at the exact length you want.

#### **Precise and even trim**

- Long lasting performance for precise results
- Even trim in one pass
- A trimmer that adjusts to your beard

#### **Versatile styling for face, head and body**

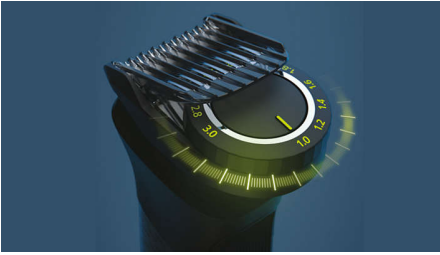
- Say goodbye to body hair
- Get the details right
- Your haircut at home
- Get an even trim and sharp edges
- All-in-one for face, head & body

#### **Quality & Ease of use**

- Always know when it's time to charge
- Easy to grip and control
- Runs 4 weeks on a single charge\*
- Water-resistant for convenient use and easy cleaning

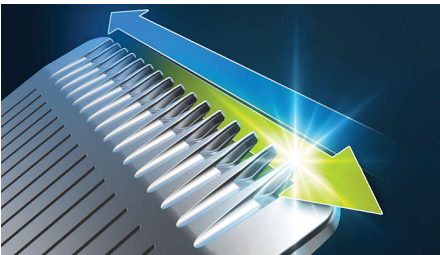
# Highlights

## Precision trimming comb



The patented trimming comb offers 11 length settings between 1-3 mm, so you can achieve an even trim at the exact length you want.

## Self-sharpening steel blades



Stainless steel blades remain sharp as day one for long lasting performance. No oil required.

## BeardSense technology



The trimmer scans the beard density 125x per second and boosts power exactly when you need it to tackle also dense, bushy or longer beards.

## 13in1 trimmer



This all-in-one trimmer offers 13 tools for all your grooming needs. Conveniently trim and style your facial hair, clip your hair and groom your body.

## Precision beard styling



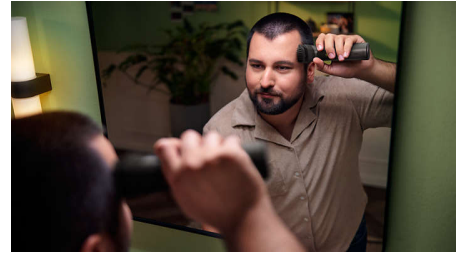
The trimmer and its multi-comb set offer 19 length settings from 0.5 to 16 mm in up to 0.2 mm precision steps for shorter and longer beard styles. The narrow design of the precision trimmer attachment makes it easy to create sharp edges and fine details. Clean up cheeks, chin and neck with the metal trimmer to finish your look.

## Comfortable body grooming



Shave comfortably below the neck with our body shaver attachment. A unique skin-protection system guards sensitive areas while you shave as close as 0.5 mm. You can also trim body hair with the click-on comb.

## Easy hair clipping



With the trimmer's multi-comb system you can choose length settings between 0.5 - 16 mm to create your hairstyle at home.

## Nose/ear/eyebrow trimming



The nose/ear trimmer attachment removes unwanted nose and ear hair quickly and safely. Easily keep your eyebrows neat and tidy with the dedicated eyebrow comb.

## Up to 120 minutes of runtime



A powerful lithium-ion battery provides up to 120 minutes of runtime with 5-minute quick charge option for long life and maximum power.

# Specifications

## Power

**Battery type:** Lithium-ion

**Charging:** 60 minutes, 5 min quick charge

**Run time:** Up to 120 minutes

**Charging method:** USB-A (no adapter included)

**Maximum power consumption:** 5 W

**Input Voltage:** 5 V

## Design

**Handle:** Ergonomic rubber grip

## Service

**2-year warranty**

## Ease of use

**Display:** Battery low indicator, Battery full indicator, Battery charging indicator

**Maintenance free:** No blade oil required

**Wet & Dry:** 100% shower proof

**Operation:** Cordless use only

## Versatile styling

**Styling tools:** Steel trimmer, Nose and ear trimmer, Body shaver with skin protector, Steel precision trimmer, Precision trimming comb, 3-

7 mm adjustable comb, 3 hair combs, 2 body combs, Eyebrow comb

**Accessories:** Soft pouch, Cleaning brush, USB-A (adapter not included)

**# of attachments:** 13

## Precise trim

**Cutting performance:** Self-sharpening steel blades, BeardSense technology

**Precision trimming:** Precision trimming comb

**Length settings:** 19 (0.5 - 16 mm)

**Precision steps:** Up to 0.2 mm

