

# PHILIPS

Wet & Dry Electric  
Shaver

Shaver 3000X Series

ComfortCut Blades

Anti-Corrosion Shaving System

Shave wet & dry

3D Floating Heads



X3063/00

## Comfortable, clean shave

With SkinProtect Technology

Philips Shaver 3000X Series gives you a comfortable, clean shave at an accessible price. The 27 self-sharpening ComfortCut blades, wet and dry use, and a pop-up trimmer make the shaver easy to use and provide excellent value.

### Easy to use

- Suitable for head shaving
- 45 minutes of cordless shaving from a 1-hour charge
- Pop-up trimmer for your mustache and sideburns
- Battery indicator to know when it's time to charge
- One-touch open for easy cleaning
- Anti-slip grip for a secure shave
- 5-minute quick charge gives enough power for a full shave
- Convenient charging

### A clean shave

- ComfortCut Blades for a comfortable, clean shave

### Skin Protect technology

- 3D Floating Heads follow your face for a comfortable shave
- Wet and dry shaving at the sink or in the shower

### Sustainable

# Shaver 3000X Series

Wet & Dry Electric Shaver

X3063/00

## Highlights

### ComfortCut Blades



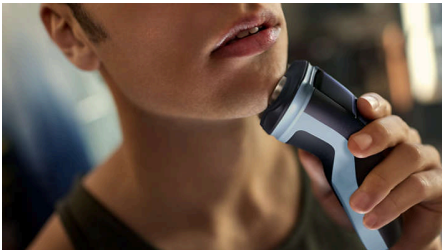
27 self-sharpening blades comfortably cut each hair right above skin level for a smooth, even finish, every time. Our self-sharpening blades stay like new for 2 years.

### Wet and dry shaving



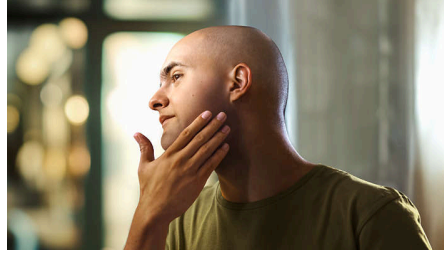
Choose a convenient dry shave, or pair with your favorite foam or gel for a refreshing wet shave, even in the shower.

### 3D Floating Heads



Floating heads flex in four directions to maintain even contact with your skin protecting it from nicks & cuts.

### Suitable for head shaving



The shaver is designed to be a versatile solution that allows you to confidently shave both your face and head

### Anti-Corrosion Shaving System



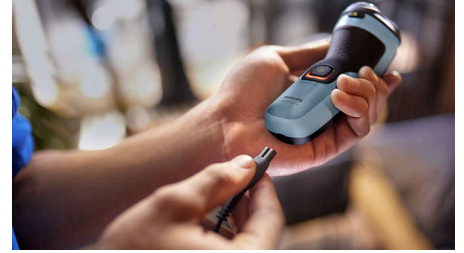
Our shaver blades are made from surgical-grade hypoallergenic steel to resist corrosion, prevent impurities, and protect your skin.

### Pop-up trimmer



Refine and define your mustache and sideburns to complete your look with the pop-up trimmer.

### 45 minutes of cordless shaving



In just an hour, the durable NiMH battery is fully charged for about 15 shaves. In a hurry? A 5-minute quick charge gives you enough power for one shave.

### One-touch open



The shaver head flips open at the touch of a button to rinse clean under running water.

### Rubber grip



Never lose your grip. The ergonomic handle with rubber stays secure and comfortable, even when wet.

# Shaver 3000X Series

Wet & Dry Electric Shaver

X3063/00

## Highlights

### Battery indicator



Don't get caught with an empty battery. The battery indicator lets you know if the battery is low, empty, or charging.

### 5-minute quick charge



In a hurry? Plug in your shaver for just five minutes to get enough power for one full shave.

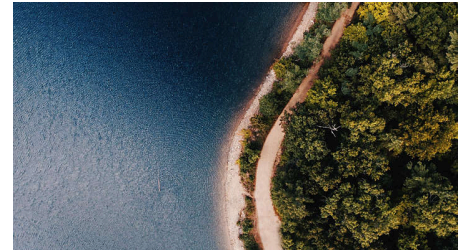
### USB-A Charging



At Philips, we drive sustainability in all aspects of product creation. Our ambition is to reduce waste and minimize the number of USB adaptors

we put in the market. Should you need an adapter, a suitable supply unit is available via: [www.philips.com/support](http://www.philips.com/support)

### Made with care for the planet



The packaging of this shaver is plastic-free and made out of 90% recycle material, while our blade production facility uses 100% renewable electricity.

# Shaver 3000X Series

Wet & Dry Electric Shaver

X3063/00

## Specifications

### Accessories

**Maintenance:** Protective cap  
**Pop-up trimmer included**

### Power

**Run time:** 45 min / 15 shaves  
**Battery type:** NiMH  
**Charging time:** 1 hour full charge  
**Quick charge:** Yes, 5 minutes

### Design

**Handle:** Ergonomic grip & handle  
**Color:** Celestial Blue

### Service

**Replacement head:** Replace every 2 yrs with SH30  
**2-year warranty**

### Shaving Performance

**Contour following:** 3D Floating Heads  
**Shaving system:** ComfortCut Blade System, 27 self-sharpening blades, 55.000 cuts/minute

### Ease of use

**Wet & Dry:** Shave wet or dry  
**Cleaning:** One-touch open, Fully washable  
**Display:** Charging indicator  
**Operation:** Cordless use only  
**Waterproof:** Waterproof IPX7, Showerproof

### Skin Protect technology

**Skin Protection:** Anti-Corrosion Shaving System

