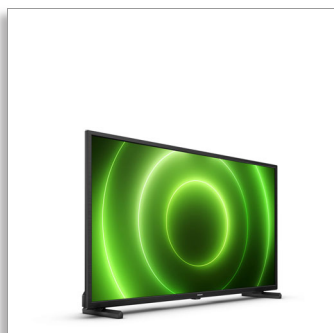




Philips 6900 series
Android Smart LED TV

98cm (39")

LED TV
Android / AI voice control



39PHT6916

Android Smart LED TV

Family movie night. The big game. Whatever the occasion, settle down to superb picture quality and great sound. This TV makes all your content look great,

Android TV-content at your command

- Google Assistant. Control the TV with your voice.
- Android TV. Simply smart.
- Google Play store. More to love

Rich sound. Feel more.

- Deep bass and crystal-clear dialogue.
- Dolby Digital Plus - improved sound and realistic audio feel

PHILIPS

Android Smart LED TV
98cm (39") LED TV, Android / AI voice control

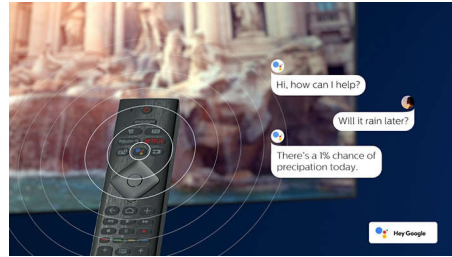
39PHT6916/94

Highlights

Android TV

Make your Philips Android TV your own. If it's all about Amazon and YouTube this week, and Netflix next week-no problem. A clear, intuitive interface lets you put the content you love front and center. Easily pick up where you left off in the latest series, or check out the new movie releases.

Google Assistant



Control your Philips Android TV with your voice. Want to play a game, watch Netflix, or find content and apps in the Google Play store? Just tell your TV. You can even command all Google Assistant-compatible smart home devices-like dimming the lights and setting the thermostat on movie night. Without leaving the sofa.

TV content

Go beyond traditional TV programming with Google Play Store . Experience endless movies, TV, music, apps and games online. More to love.

Dolby Digital Plus

Dolby Digital Plus, the world's leading digital multi-channel audio standards, make use of the way the human ear naturally processes sound, you experience superb quality audio sound with realistic spatial effects.

DTS HD

DTS HD optimizes sound processing by preserving the original sound content so that you can enjoy a better sound from your speakers with crystal-clear dialog.

Specifications

Picture/Display

- Aspect ratio: 16:9
- Display: LED HD TV
- Panel resolution: 1366 x 768
- Picture enhancement: HDR10

Tuner/Reception/Transmission

- Digital TV: DVB-T/T2
- Video Playback: PAL, SECAM, NTSC
- MPEG Support: MPEG2, MPEG4
- TV Program guide*: 8 day Electronic Program Guide

Android TV

- OS: Android TV™ 9 (Pie)
- Pre-installed apps: Google Play Movies*, Google Play Music*, Google Search, YouTube, Amazon Prime Video, Netflix

Smart TV

- SmartTV apps*: Netflix, YouTube

Multimedia Applications

- Video Playback Formats: Containers: AVI, MKV, H264/MPEG-4 AVC, MPEG-1, MPEG-2, MPEG-4, WMV9/VC1, VP9, HEVC 265@FHD
- Music Playback Formats: AAC, MP3, WAV, WMA (v2 up to v9.2), WMA-PRO (v9 and v10)
- Subtitles Formats Support: .SMI, .SRT, .SUB, .TXT
- Picture Playback Formats: JPEG, GIF, PNG, HEIF

Sound

- Output power (RMS): 10W
- Speaker configuration: 5Wx2 speaker

Connectivity

- Number of HDMI connections: 3
- HDMI features: Audio Return Channel
- Number of USBs: 2
- Wireless connection: Wi-Fi 802.11n, 2x2, Single band, Bluetooth
- Other connections: Headphone out, Antenna IEC75, Service connector, AV in, Digital audio out (optical), Ethernet-LAN RJ-45

Power

- Mains power: AC 110V-240 50/60Hz
- Ambient temperature: 5 °C to 35 °C
- Standby power consumption: <math>< 0.5W</math>

Accessories

- Included accessories: Remote Control, 2 x AAA Batteries, Power cord, Quick start guide, Legal and safety brochure, Table top stand

Dimensions

- Set Width: 891 mm
- Set Height: 511.5 mm
- Set Depth: 75 mm
- Product weight: 5 kg
- Set width (with stand): 891 mm
- Set height (with stand): 540 mm
- Set depth (with stand): 540 mm
- Product weight (+stand): 5.2 kg
- Box width: 963 mm
- Box height: 607 mm
- Box depth: 140 mm
- Weight incl. Packaging: 7 kg
- Wall mount compatible: 200 x 200 mm

Connections

Side



Down



Issue date 2023-07-30

Version: 6.0.1

EAN: 87 18863 03263 3

© 2023 Koninklijke Philips N.V.
All Rights reserved.

Specifications are subject to change without notice. Trademarks are the property of Koninklijke Philips N.V. or their respective owners.

www.philips.com

- * EPG and actual visibility (up to 8 days) is country and operator dependent.
- * The TV supports DVB reception for 'Free to air' broadcast. Specific DVB operators may not be supported. An up to date list can be found in the FAQ section of the Philips support website. For some operators Conditional Access and subscription are required. Contact your operator for more information.
- * Smart TV app offerings vary per TV model and country. For more details please visit: www.philips.com/smarttv.
- * Philips TV does not guarantee 100% interoperability with all HDMI CEC devices
- * Its functionality is subject to ChromeCast built-in apps and smart devices. For more details, please visit ChromeCast built-in product pages.
- * Image depicted on the website are non-contractual pictures. Please always refer to the actual TV that are sold in the retail or stores.
- * Due to the transmission limitations of Bluetooth wireless technology, a slight sound delay might occur when you hear audio from your bluetooth headphone or bluetooth speakers. When this occur, you might see the character moving his or her mouth but there is a slight delay in spoken dialog accompany
- * Please kindly note that the remote control that is being supplied inside your TV is the most latest and updated version. if you need further information, please approach your local customer service center.