

PHILIPS

sonicare

Sonic electric
toothbrush

4100 Series

Sonicare technology

QuadPacer and SmarTimer

Slim ergonomic design

14-day battery life



HX3683/33



Goodbye manual toothbrush. Hello Sonicare.

Helps whiten teeth every time you brush

Sonic technology combined with our brush action gently removes stains for naturally whiter teeth every time you brush.

Designed around you

- Use less. Reuse more
- Switch between 2 modes: Clean and Sensitive
- Always know when to replace your brush heads
- 14-day long lasting battery life
- Makes traveling easier for you

A whiter, healthier smile

- Our unique technology brings you a powerful yet gentle clean
- Helps whiten teeth every time you brush

Optimize your brushing

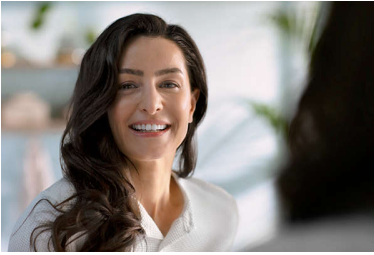
- Optimize your brushing with SmarTimer and QuadPacer

Protects your gums

- Pressure Sensor helps protect your teeth and gums

Highlights

Helps whiten teeth every time you brush



Sonicare electric toothbrush with advanced sonic technology gently removes stains for naturally whiter teeth every time you brush.

Protects your gums



Built-in pressure sensor automatically detects pressure you apply, warns you, and reduces the toothbrush vibrations automatically to help protect your gums. The toothbrush will make a pulsing sound as a reminder to ease off the pressure. 7 out of 10 people found this feature helped them become better brushers.

Slim travel case



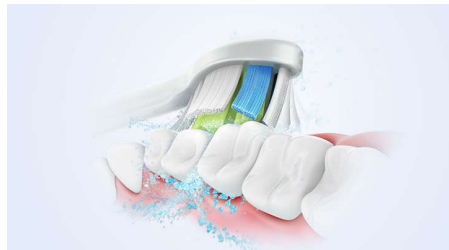
Our premium travel case lets you store your toothbrush hygienically, while our compact USB charging base keeps you topped up when you are on the go. You do get two weeks of regular use from a single full charge, but the charger's just the ticket for longer trips.

SmartTimer and QuadPacer



2 minute SmartTimer and 30-second QuadPacer guide you to brush for the recommended time in all areas of your mouth to ensure a complete clean.

Advanced Sonicare Technology



Powerful bristle vibrations drive microbubbles deep between your teeth and along your gum line for a refreshing experience. You will get two month's worth of manual brushing in just 2 minutes.** 31000 brush strokes per minute gently clean your teeth, break up plaque, and sweep it away for an exceptional daily clean.

BrushSync replacement reminder



All brush heads wear out over time, so you'll want to keep an eye on yours to make sure you're still getting a great clean. Our BrushSync technology tracks how long you've been using your brush head for, and how hard you've been brushing. The BrushSync replacement

reminder on your handle and a short beep gives you a heads up when it's time to replace it.

2 modes with Clean and Sensitive options



Switch between 2 modes to make the brushing session comfortable for you.

Long lasting battery life



Battery life lasts up to 14 days so you can go long periods without charging.

Pulling the plug on waste



Our ambition at Philips is to reduce electronic waste. One way we do this is to minimize the number of adapters we put in the market. These products come without a power adapter because we are committed to reducing electronic waste.

Specifications

Power

Voltage: DC5V

Technical specifications

Operating time (full to empty): 14 days***

Battery: Rechargeable

Battery type: Lithium ION

Design and finishing

Color: White

Service

Warranty: 2-year limited warranty

Ease of use

Brush head system: Easy click-on brush heads

Handle: Slim ergonomic design

Battery indicator: Light shows battery status

BrushSync Replacement Reminder: Always know when to, Reminder icon lights up, replace brush heads, Replacement reminder, to always ensure best results

Items included

Brush heads: 1 W2 Optimal White

Charger: 1

Travel case: 1 slim travel case

Handle: 1 4100 Series

Cleaning performance

Performance: Helps whiten teeth every time you brush

Timer: Quadpacer and SmarTimer

Pressure feedback: Vibrates handle to alert user

Modes

Clean: For exceptional everyday clean

2 intensities: High, Low

Smart sensor technology

Pressure sensor: Alerts when brushing too hard

BrushSync Replacement Reminder: Always know when to, replace brush heads

