



Philips ComfortTouch
Garment Steamer

FlexHead

StyleBoard
2000W



GC559/66

Easily de-wrinkle and refresh from top to bottom

with FlexHead

Our new ComfortTouch garment steamer effortlessly removes wrinkles from top to bottom thanks to innovative FlexHead and an extra-long StyleBoard.

Quick crease removal

- Extra-long StyleBoard for better results from top to bottom
- Powerful continuous steam for fast crease removal

Reliable and safe

- Automatically switches to standby mode for peace of mind
- Safe on all ironable fabrics, no burns guaranteed

More efficient with less effort

- 5 steam settings for different kinds of fabric
- Hang&Lock keeps your hanger securely in place
- Easy Rinse descaling for years of effective use
- With FlexHead to easily reach the bottom of garments

Refresh without washing or dry cleaning

- Continuous steam removes odors and kills 99.9%* of bacteria

PHILIPS

Highlights

Auto shut off



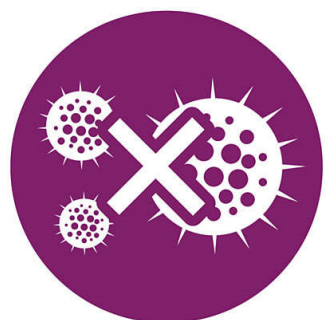
The steamer automatically switches to standby mode when the water tank is empty, so you have peace of mind even if you forget to switch it off.

Safe on all ironable fabrics



The steamer is safe to use on all ironable fabrics and garments. The steam plate can be safely pressed against any clothing with no risk of burning – a great solution for delicate fabrics, like silk.

99.9% bacteria-free*



Hot steam refreshes your clothes and kills up to 99.9% of bacteria*. Less frequent washing

and dry cleaning saves time and money, and helps clothes last longer.

Extra-long StyleBoard

An extra long StyleBoard provides reliable support during steaming. Simply press the fabric between the steam plate and board for easier steaming with crisp results from top to bottom.

Powerful continuous steam



Powerful continuous steam is blown through the nozzles, enabling you to remove creases with only a few strokes.

5 steam settings



Set your preferred steam setting for optimal results on different fabric. Use low steam for thinner fabrics and a more powerful setting for thicker fabrics and coats.

Hang&Lock



Our unique Hang&Lock feature holds your clothes hanger in place for convenient steaming. It prevents the hanger from swinging or falling off.

Easy Rinse descaling



Prolong the lifetime of your appliance by using the Easy Rinse descaling function regularly.

With handy FlexHead

Innovative FlexHead lets you steam the bottom of garments easily, with less bending and kneeling. The flexible steam plate ensures maximum contact with the fabric so less steam escapes for efficient results.

Specifications

Board cover

- Top layer: 100% Cotton

Support for ironing

- StyleBoard

Design

- Color: Chalky camel gold

Easy to use

- Safe on all ironable fabrics: Even delicates like silk
- Water tank capacity: 1800 ml
- Detachable water tank
- Power cord length: 1.6 m
- Hose length: 1.3 m
- Hang&Lock
- Silicone steam hose
- Auto shut off

Accessories included

- Brush
- Garment hanger

- Glove for extra protection
- Adjustable double pole

Guarantee

- 2 year worldwide guarantee

Technology

- FlexHead

Fast crease removal

- Power: Max 2000 W
- Continuous steam: up to 40 g/min
- Voltage: 220 - 240 V
- Ready to use: <1 minute(s)
- Variable steam: 5 levels

Scale management

- Descaling and cleaning: Easy Rinse

Size and weight

- Packaging dimensions (WxHxL): 37x46x64.5 cm
- Product dimensions (WxHxL): 33x173x37 cm



Issue date 2023-08-06

Version: 1.1.3

EAN: 87 10103 84240 8

© 2023 Koninklijke Philips N.V.
All Rights reserved.

Specifications are subject to change without notice.
Trademarks are the property of Koninklijke Philips N.V.
or their respective owners.

www.philips.com

* Tested by external body for bacteria types Escherichia coli 8099, Staphylococcus aureus ATCC 6538, Candida albicans ATCC 10231 with 1 minute steaming time.