

Philips
widescreen flat TV

66 cm (26")

LCD
HD Ready

26TA1000



Turn up your viewing experience

with Crystal Clear

Tuned for picture-perfect quality, the Philips 26TA1000 HDTV delivers superb display and increased picture depth plus virtual surround sound, compact design, smart audio/video presets, 10 pages of teletext and even doubles as a PC monitor.

Tuned for optimal picture quality

- HD LCD WXGA display, with a 1366 x 768p resolution
- HD Ready for the highest quality display of HD signals
- Crystal Clear improves picture depth
- Progressive Scan component video for optimized image quality

Designed for your convenience

- 10 pages Smart Text for fast access to teletext.
- Smart Picture and Smart Sound to personalize your viewing

Stylish design

- Compact and slim design that fits in every room

For advanced performance

- DVI-D provides the best digital picture

Crisp and Clear sound

- Virtual Surround Sound for enhanced sound

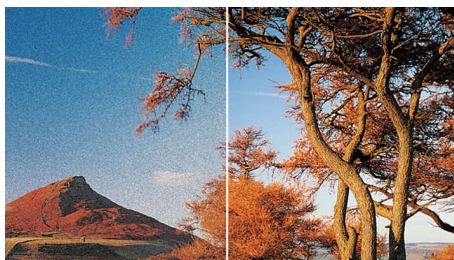
PHILIPS

Highlights

LCD WXGA display, 1366 x 768p

This WXGA display with state-of-the-art LCD screen technology gives you widescreen HD resolution of 1366 x 768p pixels. It produces brilliant flicker-free progressive scan pictures with optimum brightness and superb colors. This vibrant and sharp image will provide you with an enhanced viewing experience.

HD Ready



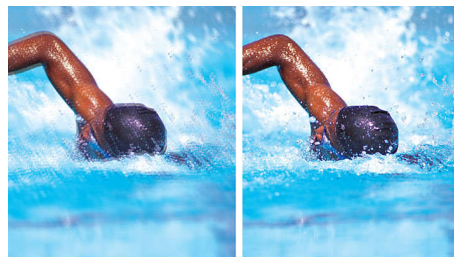
Enjoy the exceptional picture quality of High Definition pictures and be fully prepared for HD sources like HDTV settop box or Blu-ray disc. HD Ready is a protected label that offers picture quality beyond that of progressive scan. It conforms to strict standards laid out by EICTA to offer a HD screen that displays the benefits of resolution and picture quality of a High Definition signal. It has a universal connection for both analog YPbPr and uncompressed Digital connection of DVI or

HDMI, supporting HDCP. It can display 720p, and 1080i signals at 50 and 60Hz.

Crystal Clear

Combining picture enhancements like Contrast plus and color improvement, Crystal Clear improves picture depth.

Progressive Scan



Progressive Scan doubles the vertical resolution of the image resulting in a noticeably sharper picture. Instead of sending a field comprising the odd lines to the screen first, followed by the field with the even lines, both fields are written at one time. A full image is created instantaneously, using the maximum resolution. At such a speed, your eye perceives a sharper picture with no line structure.

Virtual surround sound

Virtual surround sound creates additional audio channels for a theater-like audio experience.

Compact and slim design

This design style emphasizes a slim, compact look that saves space and fits in anywhere.

Smart Picture and Smart Sound

Philips preset modes for Smart Picture and Smart Sound provide you with direct access via a single key on the remote control. You can select optimized picture and sound settings for the various picture and sound modes.

10 page Smart Text

The teletext is a common system transmitted by most broadcasters. The 10 page smart text feature gives you fast access to information when changing pages.

DVI-D input

A DVI-D input makes an uncompressed digital RGB connection from source to screen. By eliminating the conversion of the digital signal to analog, it delivers an unblemished image. Thanks to the non-degraded signal, you get less flicker and a clearer picture. The DVI input is fully backward compatible with HDMI sources, and also uses HDCP copy protection.

Specifications

Picture/Display

- Aspect ratio: 16:9
- Panel resolution: 1366 x 768p
- Brightness: 500 cd/m²
- Picture enhancement: 3/2 - 2/2 motion pull down, 3D Combfilter, 3D MA deinterlacing, Automatic skin tone correction, Black stretch, Blue stretch, Green enhancement, Progressive scan, Smart Picture, White stretch
- Contrast ratio (typical): 600:1
- Display screen type: LCD WXGA Active Matrix TFT
- Response time (typical): 8 ms
- Viewing angle (horizontal): 170 degree
- Viewing angle (vertical): 170 degree
- Screen enhancement: Anti-Reflection coated screen

Supported Display Resolution

- Computer formats: 640 x 480, 60Hz, 800 x 600, 56, 60Hz, 1024 x 768, 60Hz, 1280 x 720, 60Hz, 1280 x 768, 60Hz
- Video formats: 480i, 60Hz, 480p, 60Hz, 576i, 50Hz, 576p, 50Hz, 720p, 60Hz, 1080i, 60Hz

Tuner/Reception/Transmission

- Aerial Input: 75 ohm coaxial (IEC75)
- Tuner bands: Hyperband, S-Channel, UHF, VHF
- TV system: PAL B/G, PAL I, SECAM B/G, SECAM D/K

Convenience

- Child Protection: Child Lock+Parental Control
- Ease of Installation: Autostore, Fine Tuning, PLL Digital Tuning
- Ease of Use: Auto Volume Leveller (AVL), Smart Picture, Smart Sound
- User convenience: Sleep Timer
- Screen Format Adjustments: 4:3, Subtitle Zoom, Superwide, Widescreen, Zoom 14:9, Zoom 16:9
- Remote Control: TV
- Remote control type: RC19335016

- Teletext: 10 page Smart Text
- VESA Mount: 100 x 100 mm (in rear center)

Sound

- Output power (RMS): 2 x 5 W
- Sound System: Mono, Stereo
- Sound Enhancement: Virtual Surround Sound

Loudspeakers

- Built-in speakers: 2

Connectivity

- AV 1: Audio L/R in, CVBS in, S-Video
- AV 2: Audio L/R in, CVBS in, S-Video
- AV 3: Audio L/R in, CVBS in, YPbPr
- PC: 3.5 mm PC audio input x1, VGA-in D-Sub 15HD
- Other connections: Analog audio Left/Right in, DVI-D
- AV output: Audio (L/R) x1, Composite (CVBS) x1
- HD in: Audio L/R in, YPbPr
- headphone: Headphone out 3.5 mm jack

Power

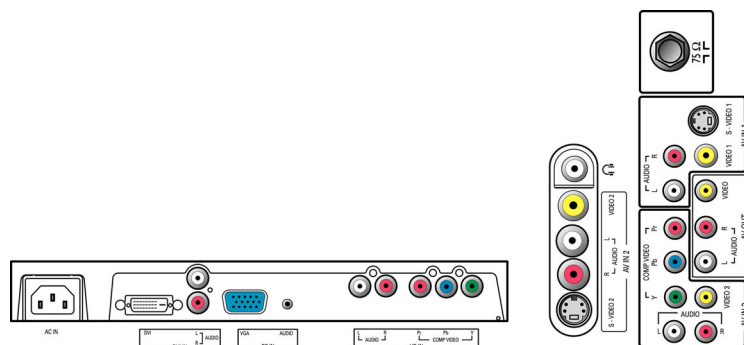
- Power supply: 90-264 VAC, 50/60 Hz
- Ambient temperature: 5 °C to 40 °C
- Power consumption: < 100 W
- Standby power consumption: < 2 W

Accessories

- Included accessories: Batteries for remote control, Power cord, Quick start guide, Remote Control, User Manual, Warranty certificate

Dimensions

- Set width (with stand): 820 mm
- Set height (with stand): 480 mm
- Set depth (with stand): 213 mm
- Product weight (+stand): 12.7 kg
- Set width (with stand) (inch): 32.3 inch
- Set depth (with stand) (inch): 8.4 inch
- Set height (with stand) (inch): 18.9 inch
- Product weight (+stand) (lb): 30 lb



Issue date 2023-07-30

Version: 2.0.10

EAN: 87 10895 97259 8

© 2023 Koninklijke Philips N.V.
All Rights reserved.

Specifications are subject to change without notice.
Trademarks are the property of Koninklijke Philips N.V.
or their respective owners.

www.philips.com