



Philips
Flat TV

51 cm (20")
LCD
Progressive Scan

20TA1000



Turn up your viewing experience with Crystal Clear

Tuned for picture-perfect quality, the compact, enhanced definition Philips 20TA1000 delivers great display and increased picture depth plus virtual surround sound, smart audio/video presets, teletext and even doubles as a PC monitor.

Tuned for optimal picture quality

- Enhanced-definition LCD VGA display, 640 x 480p
- Crystal Clear improves picture depth
- Progressive Scan component video for optimized image quality

Designed for your convenience

- 10 pages Smart Text for fast access to teletext.
- Smart Picture and Smart Sound to personalize your viewing

Stylish design

- Compact and slim design that fits in every room

For advanced performance

- VGA input so that you can also use your TV as a PC monitor
- Component Video Input for top quality playback

Crisp and Clear sound

- Virtual Surround Sound for enhanced sound

PHILIPS

Specifications

Picture/Display

- Aspect ratio: 4:3
- Panel resolution: 640 x 480p
- Brightness: 450 cd/m²
- Contrast ratio (typical): 500:1
- Picture enhancement: 3/2 - 2/2 motion pull down, Automatic skin tone correction, Black stretch, Blue stretch, Green enhancement, Progressive scan, Smart Picture, White stretch
- Display screen type: LCD SVGA Active Matrix TFT
- Response time (typical): 12 ms
- Viewing angle (horizontal): 170 degree
- Viewing angle (vertical): 170 degree
- Screen enhancement: Anti-Reflection coated screen

Supported Display Resolution

- Computer formats: 640 x 480, 60Hz
- Video formats: 480i, 60Hz, 480p, 60Hz, 576i, 50Hz, 576p, 50Hz, 720p, 60Hz, 1080i, 60Hz

Tuner/Reception/Transmission

- Aerial Input: 75 ohm coaxial (IEC75)
- Tuner bands: Hyperband, S-Channel, UHF, VHF
- TV system: PAL B/G, PAL I, SECAM B/G, SECAM D/K

Convenience

- Child Protection: Child Lock+Parental Control
- Ease of Installation: Autostore, Fine Tuning, PLL Digital Tuning
- Ease of Use: Auto Volume Leveller (AVL), Smart Picture, Smart Sound
- User convenience: Sleep Timer
- Screen Format Adjustments: 4:3, 4:3 expand, 16:9 compress
- Remote Control: TV
- Remote control type: RC19335016

- Teletext: 10 page Smart Text
- VESA Mount: 100 x 100 mm (in base)

Sound

- Output power (RMS): 2 x 3 W
- Sound System: Mono, Stereo
- Sound Enhancement: Virtual Surround Sound

Loudspeakers

- Built-in speakers: 2

Connectivity

- AV 1: Audio L/R in, CVBS in, S-Video
- PC: 3.5 mm PC audio input x1, VGA-in D-Sub 15HD
- HD in: Audio L/R in, YPbPr
- headphone: Headphone out 3.5 mm jack

Power

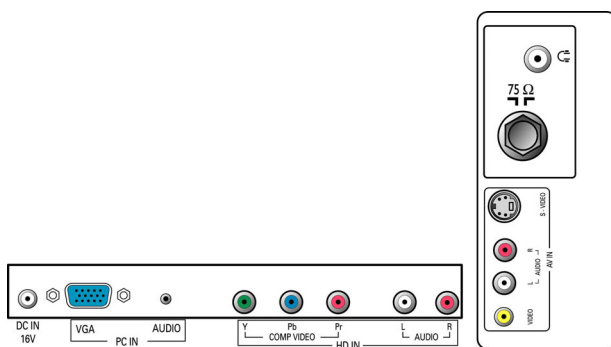
- Power supply: 90-264 VAC, 50/60 Hz
- Ambient temperature: 5 °C to 40 °C
- Power consumption: < 55 W
- Standby power consumption: < 1 W

Accessories

- Included accessories: Batteries for remote control, Power cord, Quick start guide, Remote Control, User Manual, Warranty certificate

Dimensions

- Set width (with stand): 590 mm
- Set height (with stand): 448.5 mm
- Set depth (with stand): 236 mm
- Product weight (+stand): 8.3 kg
- Set width (with stand) (inch): 23.2 inch
- Set depth (with stand) (inch): 9.3 inch
- Set height (with stand) (inch): 17.7 inch
- Product weight (+stand) (lb): 18.3 lb



Highlights

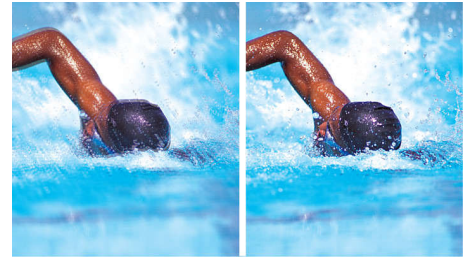
LCD VGA display, 640 x 480p

This VGA display with state-of-the-art LCD screen technology has an enhanced resolution of 640 x 480p.

Crystal Clear

Combining picture enhancements like Contrast plus and color improvement, Crystal Clear improves picture depth.

Progressive Scan



Progressive Scan doubles the vertical resolution of the image resulting in a noticeably sharper picture. Instead of sending a field comprising the odd lines to the screen first, followed by the field with the even lines, both fields are written at one time. A full image is created instantaneously, using the maximum resolution. At such a speed, your eye perceives a sharper picture with no line structure.

Virtual surround sound

Virtual surround sound creates additional audio channels for a theater-like audio experience.

Compact and slim design

This design style emphasizes a slim, compact look that saves space and fits in anywhere.

Smart Picture and Smart Sound

Philips preset modes for Smart Picture and Smart Sound provide you with direct access via a single key on the remote control. You can select optimized picture and sound settings for the various picture and sound modes.

10 page Smart Text

The teletext is a common system transmitted by most broadcasters. The 10 page smart text feature gives you fast access to information when changing pages.

Component Video Input (YPbPr)

Component Video is the highest quality interconnection standard for analog video. It is sharper than S-video and composite video.

VGA input

The TV set has a VGA input which is compatible with the display output signal from your PC. This means you can use the set both as a TV and PC Monitor at your convenience.



Issue date 2023-07-27

Version: 3.0.1

EAN: 87 10895 95082 4

© 2023 Koninklijke Philips N.V.
All Rights reserved.

Specifications are subject to change without notice.
Trademarks are the property of Koninklijke Philips N.V.
or their respective owners.

www.philips.com