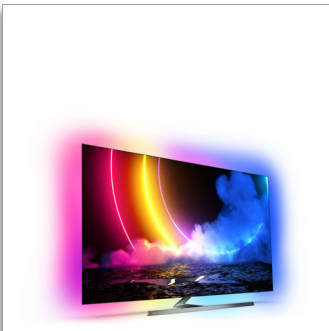


Philips OLED  
4K UHD OLED Android  
TV

P5 AI perfect picture engine

Dolby Atmos sound  
4 sided Ambilight TV  
164 cm (65") Android TV



65OLED856

## Uniquely immersive. Completely beautiful.

### 4K UHD OLED Android TV

The thrillingly realistic picture on this gorgeous OLED TV combines with immersive 4 sided Ambilight to create cinema-sized excitement. Whatever you watch or play, the action will leap from the screen—right into your living room.

#### **Designed to mesmerise.**

- All-round immersion. 4 sided Ambilight.
- Premium design. From stand to remote.
- This is what lifelike feels like. Philips OLED TV.

#### **Smooth motion. True colour. Incredible depth.**

- Vibrant HDR picture. Philips 4K UHD TV.
- Cinematic vision and sound. Dolby Vision and Dolby Atmos
- Great for gaming. Ultra-low latency on any console
- Whatever you watch, a picture so real. P5 engine with AI.
- Eyeball-friendly viewing

#### **Content at your command.**

- Voice control. The Google Assistant. Works with Alexa.
- Multi-room audio. DTS Play-Fi
- Simply smart. Android TV.

# PHILIPS

4K UHD OLED Android TV  
P5 AI perfect picture engine Dolby Atmos sound, 4 sided Ambilight TV, 164 cm (65") Android TV

65OLED856/12

# Highlights

## 4 sided Ambilight



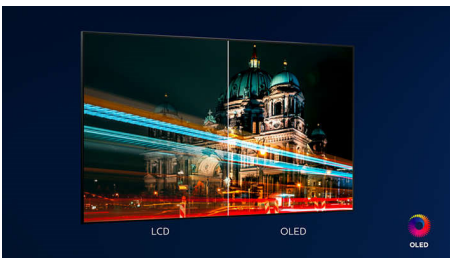
With Philips 4 sided Ambilight, every moment feels closer. Intelligent LEDs around the edge of the TV respond to the on-screen action and emit an immersive glow that's simply captivating. Experience it once and wonder how you enjoyed TV without it.

## P5 engine with AI



Philips P5 processor with AI delivers a picture so real it feels like you could step right into it. A deep-learning AI algorithm processes images in a manner similar to the human brain. No matter what you're watching, you get lifelike detail and contrast, rich colour and smooth motion.

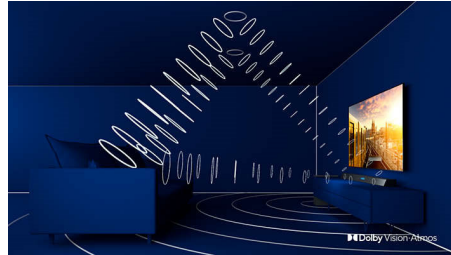
## Philips OLED TV



With a Philips OLED TV, you get a wider viewing angle and a uniquely lifelike picture. Blacks are deeper. Colours are truer. Details in shadows and highlights are precisely reproduced. All major HDR formats are

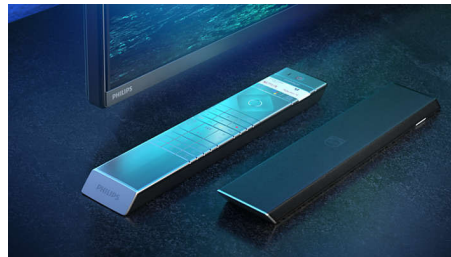
supported. You'll feel the full power of every scene.

## Dolby Vision + Dolby Atmos



Support for Dolby's premium sound and video formats means that the HDR content that you watch will look—and sound—glorious. You'll enjoy a picture that reflects the director's original intentions and experience spacious sound with real clarity and depth.

## Premium materials



Every inch of this TV looks and feels premium. The ultra-thin metal bezel. The metal T-bar stand in dark chrome. Or the soft, textured leather-backed remote with backlit keys—which is as good to hold as it is to use.

## Simply smart. Android TV



Your Philips Android TV gives you the content you want—when you want it. You can customise the home screen to display your favourite apps, making it simple to start

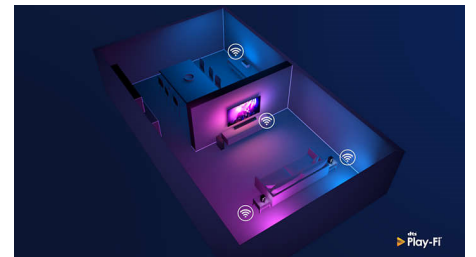
streaming the movies and shows you love. Or pick up where you left off.

## HDMI 2.1 VRR and low latency



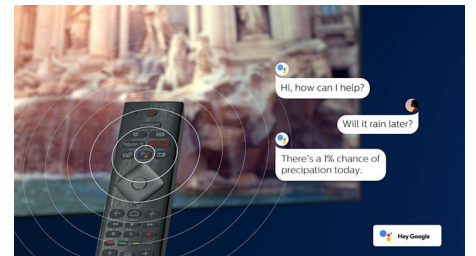
Your Philips TV boasts the latest HDMI 2.1 connectivity and automatically switches to an ultra-low-latency setting when you start playing a game on your console. VRR and FreeSync are supported for smooth fast-action gameplay. Ambilight's gaming mode brings the thrill right into the room.

## DTS Play-Fi compatible



With DTS Play-Fi on your Philips TV you can connect to compatible speakers in any room. Got wireless speakers in the kitchen? Listen to the film while you make a snack or keep up with the sports commentary while you get everyone drinks.

## AI voice control



Push a button on the remote to talk to the Google Assistant. Control the TV or Google Assistant-compatible smart home devices with your voice. Or ask Alexa to control the TV via Alexa-enabled devices.



4K UHD OLED Android TV

P5 AI perfect picture engine Dolby Atmos sound, 4 sided Ambilight TV, 164 cm (65") Android TV

65OLED856/12

# Specifications

## Ambilight

- Ambilight Features: Built-in Ambilight+hue, Ambilight Music, Game Mode, Wall colour adaptive, Lounge mode, AmbiWakeup, AmbiSleep, Philips Wireless Home Speakers
- Ambilight Version: 4 sided

## Picture/Display

- Aspect ratio: 16:9
- Diagonal screen size (inch): 65 inch

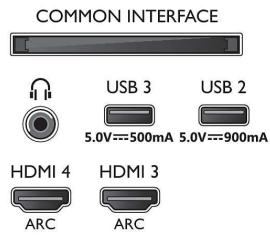
- Diagonal screen size (metric): 164 cm
- Display: 4K Ultra HD OLED
- Panel resolution: 3840 x 2160
- Picture engine: P5 AI Perfect Picture Engine
- Picture enhancement: Ultra Resolution, Wide Colour Gamut 99% DCI/P3, Dolby Vision, HDR10+, Perfect Natural Motion, A.I. PQ mode, CalMAN Ready, ISF Colour Management, Micro Dimming Perfect
- Diagonal screen size (inch): 65 inch

## Supported Display Resolution

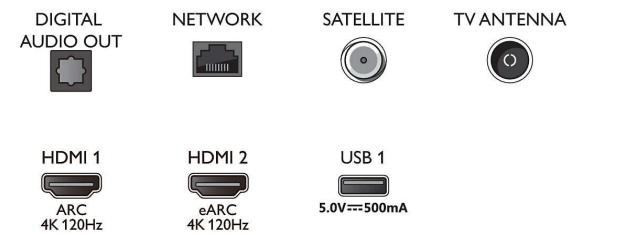
- Computer inputs on HDMI 1/2: HDMI 2.1 supported, up to 4K UHD 120 Hz, HDR supported, HDR10/HLG, HDR10+/Dolby Vision
- Computer inputs on HDMI 3/4: HDMI 2.0 supported
- Video inputs on HDMI 1/2: HDMI 2.1 supported, up to 4K UHD 120 Hz, HDR supported, HDR10/HLG, HDR10+/Dolby Vision
- Video inputs on HDMI 3/4: HDMI 2.0 supported

## Connections

Side



Bottom



# Specifications

## Tuner/Reception/Transmission

- Digital TV: DVB-T/T2/T2-HD/C/S/S2
- Video Playback: PAL, SECAM
- MPEG Support: MPEG2, MPEG4
- TV Programme guide\*: 8-day Electronic Programme Guide
- Signal strength indication
- Teletext: 1000 page Hypertext
- HEVC support

## Android TV

- OS: Android TV™ 10 (Q)
- Pre-installed apps: Google Play Movies\*, Google Play Music\*, Google Search, YouTube, Amazon instant video, BBC iPlayer, Netflix, Amazon Prime Video, Disney+, Fitness App, Spotify
- Memory size (Flash): 16 GB\*

## Smart TV Features

- User Interaction: SimplyShare
- Interactive TV: HbbTV
- Programme: Pause TV, USB recording\*
- Ease of Installation: Auto detect Philips devices, Network installation wizard, Settings assistant wizard, Device connection wizard
- Ease of Use: One-stop smart menu button, On-screen user manual
- Firmware upgradeable: Firmware auto upgrade wizard, Firmware upgradeable via USB, Online firmware upgrade
- Screen Format Adjustments: Basic - Fill Screen, Fit to screen, Advance - Shift, Zoom, stretch, Wide screen
- Remote Control: with Voice, with Key light, with Muirhead leather
- Voice assistant\*: Google Assistant built in, RC with Mic., Works with Alexa

## Multimedia Applications

- Video Playback Formats: Containers: AVI, MKV, H264/MPEG-4 AVC, MPEG-1, MPEG-2, MPEG-4, VP9, HEVC (H.265), AV1
- Music Playback Formats: AAC, MP3, WAV, WMA (v2 up to v9.2), WMA-PRO (v9 and v10)
- Subtitles Formats Support: .SRT, .SUB, .TXT, .SMI
- Picture Playback Formats: JPEG, BMP, GIF, PNG, 360 photo, HEIF

## Processing

- Processing Power: Quad Core

## Sound

- Audio: Output power: 50 Watt (RMS), 2.1 Channel
- Speaker configuration: 10 W x 2 mid-high speaker, 30 W sub-woofer
- Codec: AC-4, Dolby Atmos®, DTS-HD(M6), Dolby Digital MS12 V2.5
- Sound Enhancement: A.I. Sound, Clear Dialogue, Dolby Atmos®, Dolby Bass Enhancement, Dolby Volume Leveller, Night mode, A.I. EQ, DTS Play-Fi, Mimi Sound Personalisation

## Connectivity

- Number of HDMI connections: 4

- HDMI features: 4K, Audio Return Channel
- EasyLink (HDMI-CEC): Remote control pass-through, System audio control, System standby, One touch play
- Number of USBs: 3
- Wireless connection: Wi-Fi 802.11ac, 2 x 2, Dual band, Bluetooth 5.0
- Other connections: Common Interface Plus (CI+), Digital audio out (optical), Ethernet-LAN RJ-45, Headphone out, Satellite Connector, Service connector
- HDCP 2.3: Yes on all HDMI
- HDMI ARC: Yes for all ports
- HDMI eARC: Yes on HDMI2
- HDMI VRR: Yes on all HDMI ports, FreeSync Premium

## EU Energy card

- Diagonal screen size (inch): 65
- EPREL registration numbers: 667399
- Diagonal screen size (metric): 164
- Energy class for SDR: F
- On mode power demand for SDR: 135 kWh/1000h
- Energy class for HDR: G
- On mode power demand for HDR: 99 kWh/1000h
- Off mode power consumption: n.a.
- Networked standby mode: <math>2.0\text{ W}</math>
- Panel technology used: OLED

## Power

- Mains power: AC 220 - 240 V 50/60 Hz
- Ambient temperature: 5°C to 35°C
- Standby power consumption: <math>0.3\text{ W}</math>
- Power Saving Features: Auto switch-off timer, Eco mode

## Accessories

- Included batteries: 2 x AAA Batteries
- Included Accessories: Legal and safety brochure, Power cord, Quick start guide (x 1), Remote Control, Tabletop stand

## Design

- Colours of TV: Gun metal grey frame
- Stand design: Metal dark chrome wedge stand

## Dimensions

- Set Width: 1448.7 mm
- Set Height: 829.5 mm
- Set Depth: 68.0 mm
- Product weight: 24.3 kg
- Set width (with stand): 1448.7 mm
- Set height (with stand): 896.9 mm
- Set depth (with stand): 291.8 mm
- Product weight (+stand): 28.1 kg
- Box width: 1660.0 mm
- Box height: 995.0 mm
- Box depth: 170.0 mm
- Weight incl. Packaging: 32.5 kg
- Stand width: 800.0 mm
- Stand height: 70.0 mm
- Stand depth: 291.8 mm
- Wall-mount compatible: 300 x 300 mm



Issue date 2024-03-24

Version: 11.5.1

EAN: 87 18863 02902 2

© 2024 Koninklijke Philips N.V.  
All Rights reserved.

Specifications are subject to change without notice.  
Trademarks are the property of Koninklijke Philips N.V.  
or their respective owners.

[www.philips.com](http://www.philips.com)

- \* Philips OLED TV panels have been certified as flicker-free and discomfort glare free by UL.
- \* Memory size (Flash): 16 G, the actual available disc space may differ (dependant on e.g. (pre-)installed apps, installed operating system, etc.)
- \* EPG and actual visibility (up to 8 days) is country- and operator-dependent.
- \* Android App offerings vary per country. For more details please visit your local Google Play Store.
- \* The TV supports DVB reception for 'Free to air' broadcast. Specific DVB operators may not be supported. An up to date list can be found in the FAQ section of the Philips support website. For some operators Conditional Access and subscription are required. Contact your operator for more information.
- \* Philips TV Remote app and related functionalities vary per TV model, operator and country, as well as smart device model and OS. For more details please visit: [www.philips.com/TVRemoteapp](http://www.philips.com/TVRemoteapp).
- \* USB recording for digital channels only, recordings may be limited by broadcast copy protection (CI+). Country and channel restrictions may apply.
- \* This television contains lead only in certain parts or components where no technology alternatives exist in accordance with existing exemption clauses under the RoHS Directive.
- \* Amazon, Alexa and all related logos are trademarks of Amazon.com, Inc. or its affiliates. Amazon Alexa is available in selected languages and countries.
- \* Amazon Prime is available in selected languages and countries.
- \* Disney+ subscription required. Subject to terms at <https://www.disneyplus.com> (c) 2020 Disney and its related entities. Disney+ is available in selected languages and countries.
- \* Google Assistant is available on Philips Android TVs running on Android O (8) or higher OS version. Google Assistant is available in selected languages and countries.
- \* Netflix subscription required. Subject to terms on <https://www.netflix.com>
- \* Rakuten TV is available in selected languages and countries.