

A large Philips Azurion 7 C-arm is positioned in an operating room. In the background, a medical professional wearing a blue scrub suit and a face mask is visible. The foreground shows a person's hand and part of their face, looking at a computer monitor. The monitor displays a complex medical software interface with multiple panels showing 3D reconstructions of blood vessels and other anatomical data. The overall scene is brightly lit, typical of a surgical suite.

PHILIPS

Image Guided Therapy

Azurion 7

Philips Azurion workspace

Gives you control when
and where you need it

Azurion R3.0 is not yet cleared in all markets. Please consult with your local representative for more detailed information

With Azurion, we help you to optimize your lab performance

Interventional labs perform a broad mix of cases, requiring the integration of multiple sources. That makes it more critical than ever to work as efficiently as possible. With Philips Azurion workspace, you are connected to all modalities and applications in one customizable environment.

Azurion touchscreen module

Imaging parameters can be quickly and easily adjusted at the tableside without leaving the sterile field. You can collimate with a fingertip and zoom X-ray and roadmap images to support easy navigation. Additional touchscreens can be also placed on a pedestal or in the control room. A large pointer is visible in the exam and control room to make communication clear-cut.



For more information scan the code

Pinch, zoom, pan and flag images for processing



Multiple modules fully linked

Store and recall stand and table positions

Review and control image series

Azurion control module

The control module delivers an intuitive layout with a one-button-one-function operation to improve the user learning curve. An advanced design delivers a compact configuration to reduce the footprint with a protection bar that prevents unintended system activation. The module can be placed at tableside, on a pedestal or in the control room.



For more information scan the code

Distinctively shaped controls



Backlit for clear visibility under dim lighting

Sealed for easy cleaning

FlexVision

The large 58" LCD screen allows you to display multiple high-definition images in a variety of layouts – each tailored for your specific procedure. FlexVision* is an advanced viewing concept that gives you full flexibility and control over your viewing environment from tableside.



The widescreen FlexVision monitor can be mounted on a boom or on a fixed column to fit low-ceiling labs without extensive remodeling. Each option enables a wide range of functionalities to support you when performing an interventional procedure.



For more information scan the code

*Optional, not a standard configuration



One single click to capture and store patient data



Connects and integrates third-party applications



Access and control up to 8 video sources at the same time



On-screen pointer visible on monitors in the exam and control rooms

FlexSpot

The Azurion FlexSpot* is a 27" integrated user-centric workspace that gives you seamless access to all applications, up to four per monitor, to significantly reduce clutter and simplify workflow. Team members can perform different tasks separately, without interrupting each other, to reduce gaps between cases.



Second FlexSpot

The second FlexSpot is an extension to the FlexSpot option, consisting of up to two 27" wide-screen monitors, mouse and keyboard, located either in the control room or the examination room. The interface and functionalities are identical to FlexSpot.



For more information scan the code



Tailored presets
per user, procedure,
or department



Access up to 20
external video sources



Connects
and integrates
third-party applications



Control up to 4
applications with one
keyboard and mouse

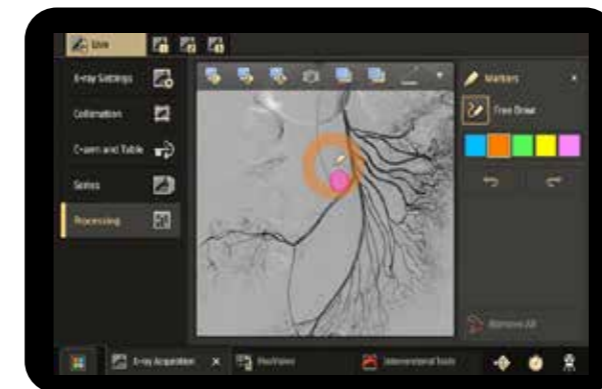
Azurion Workspot

The standard Azurion configuration in the control room contains two 24" monitors that display the acquisition window and the review window. The acquisition window displays live X-ray images and is used to change procedure settings, and to schedule procedures as the review window allows you to work with studies and series from any patient.

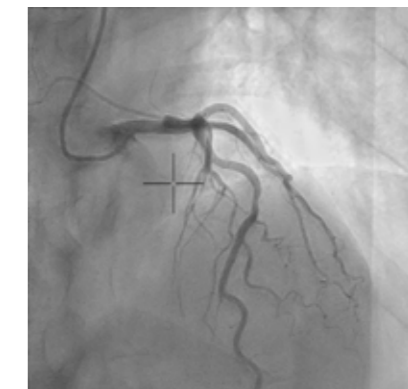
Optional workspace features

Commercial options are in place to allow you to explore further capabilities of our solutions.

Option	Features
Azurion touchscreen module Pro	<ul style="list-style-type: none"> • Visualization of the acquired images • Draw markers on the images directly on the TSM screen • Adjust the collimator by drag and drop on the clinical images • Use the interventional room pointer to highlight details on the clinical images • Zoom and pan clinical images by finger pinching • Pictorial index with a diagonal pattern to differentiate the unsaved fluoro images
FlexVision Pro	<ul style="list-style-type: none"> • Define and manage the layout of the preset • Alter the displayed content • Use the touchscreen module mouse keyboard application to perform tasks • On-screen selection of the available applications • Dynamic resizing of windows at tableside via single mouse control • Maximize, hide, scale 1:1 and make a snapshot (also available a snapshot button for all views) • Mouse functionality on third-party applications • Live and reference interaction when using a mouse • Drag and drop available applications to the screen from the top bar • Using the onscreen keyboard, it's possible to control applications without using the optional mouse at tableside: the mouse pointer is controlled using a touchpad on the touchscreen module with two buttons for left-click and right-click actions
MultiSwitch	<ul style="list-style-type: none"> • The MultiSwitch option allows you to view and control a selection of 8 video sources on the review monitor in the control room. The Azurion review application and up to 7 other video sources can be configured from all available Azurion and auxiliary video sources • A second MultiSwitch monitor can be installed in the control room that allows you to view and control a selection of 8 video sources configured from all available Azurion and auxiliary video sources



Azurion Touchscreen Module Pro draw markers option



FlexVision Pro on-screen pointer option

Azurion Control Room Workspace

Centralized access and control of sources

FlexSpot

View, control and manipulate all connected applications from a single point

Second FlexSpot

An independent workspace with identical functionalities of FlexSpot

MultiSwitch

Create tailored presets per user or lab for a better learning curve

Second MultiSwitch

Simultaneous work to facilitate pre and post-processing actions

The commercial option is composed of six 27" monitors for seamless access and control of sources in the control room. It provides for the following in the control room:

- FlexSpot with two wide-screen monitors
- Second FlexSpot with two wide-screen monitors
- Two additional MultiSwitch monitors

