



Philips Steam&Go
Handheld garment steamer

1000 W
Steam-on-demand
Brush



GC310/35

Quick crease removal at the touch of your hand

This handheld garment steamer is ideal for last moment touch-ups and difficult to iron clothes. Easy to use and quick, it is the perfect addition to your iron.

Easy to use

- Ergonomic design for handheld operation
- No ironing board needed
- Detachable water tank for easier filling
- Safe to use on delicate fabrics, like silk

Quick crease removal

- Automatic continuous steam delivered by electric pump
- Fast heat up time
- Brush accessory for a smooth finish

Refreshes clothes without washing or dry cleaning

- Steam kills up to 99.9% of bacteria*
- Removes cigarette, food and body odors

PHILIPS

Highlights

No ironing board needed



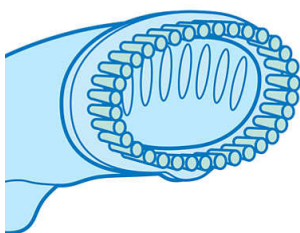
By using the steamer you do not need an ironing board anymore, which makes ironing hassle-free.

Automatic continuous steam



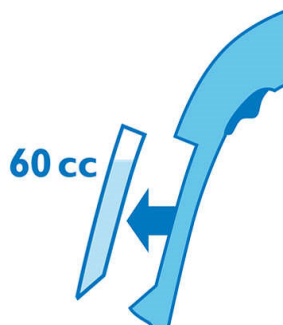
Electric pump provides continuous steam for easy and quick crease removal.

Brush accessory



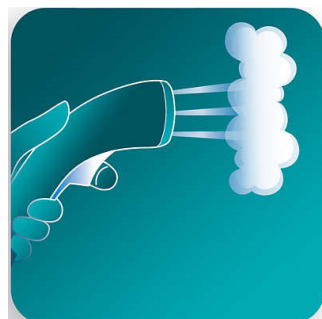
Use the brush accessory with thicker garments like coats for better steam penetration and a smoother finish.

Detachable water tank



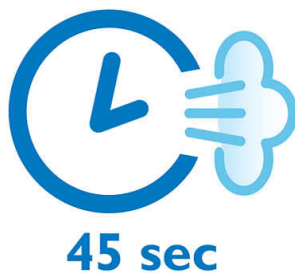
Detachable water tank for easier filling.

Ergonomic design



The handheld steamer is light and comfortable to use thanks to the ergonomic and compact design. Just press the trigger and quickly remove creases with continuous steam.

Fast heat up time



The steamer is ready to use within seconds.

Steam kills bacteria



Hot steam kills up to 99.9% of bacteria on clothes and helps delaying washing or dry cleaning*.

Removes unwanted odors



Powerful steam removes cigarette, food and body odors.

Safe on all garments



The steamer is safe to use on all fabrics. It is a great solution for delicate fabrics like silk.

Specifications

Calc management

- Suitable for tap water

Accessories

- Brush

Technical specifications

- Packaging dimensions: 38 x 12 x 15 cm
- Product dimensions: 34.7 x 12.9 x 12.2 cm
- Voltage: 220 V
- Weight of product: 0.660 kg
- Weight of product with package: 0.890 kg

Consumer Trade Item

- Height: 15
- Width: 38
- Length: 12
- Net Weight: .71
- Gross Weight: .863
- GTIN: 8710103778882

- Country of origin: CN
- Harmonized system code: 851679

Outer Carton

- Height: 32.8
- Width: 38.4
- Length: 40
- Gross Weight: 5.895
- GTIN: 18710103778889

Easy to use

- Safe for all fabrics: Even for delicates like silks
- Heat up time: less than 1 minute(s)
- Water tank capacity: 60 ml
- Power cord length: 2 m

Fast & powerful crease removal

- Continuous steam output: up to 20 g/min
- Power: 1000 W
- Steam output



Issue date 2023-07-15

Version: 1.1.2

EAN: 87 10103 77888 2

© 2023 Koninklijke Philips N.V.
All Rights reserved.

Specifications are subject to change without notice.
Trademarks are the property of Koninklijke Philips N.V.
or their respective owners.

www.philips.com

* * Tested by external body for bacteria types Escherichia coli 8099,
Staphylococcus aureus ATCC 6538, Candida albicans ATCC
10231 with 8 minutes steaming time.