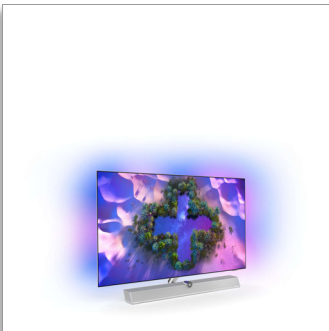




Philips OLED+
4K UHD Android TV -
Bowers & Wilkins Sound

Sound by Bowers & Wilkins
4 sided Ambilight TV
P5 AI dual picture engine
164 cm (65") Android TV



65OLED936

Superb. From what you see to what you hear.

OLED+ 4K UHD Android TV

A TV that any sofa would be proud to be pointed at. Be captivated by inky blacks and rich OLED colour, the crystal clarity of Bowers & Wilkins Sound. And Ambilight - filling the room with the excitement of everything you watch - or play.

Designed to thrill.

- The magic of Ambilight. Only from Philips.
- Eye catching. Premium design from stand to remote.
- Great for gaming. Low latency on any console.
- The difference is real. Philips OLED+ TV with HDR.
- Thrilling 3D sound. Bowers & Wilkins meets Dolby Atmos.

Incredible picture. Bowers & Wilkins sound.

- A picture so realistic, whatever you watch. P5 AI Dual engine.
- Tweeter-on-top design. For pristine dialogue.
- 3.1.2 sound system. Up-firing speakers for Dolby Atmos
- Integrated sub-woofer and full-range drivers
- Cinematic vision and sound. Dolby Vision and Dolby Atmos.

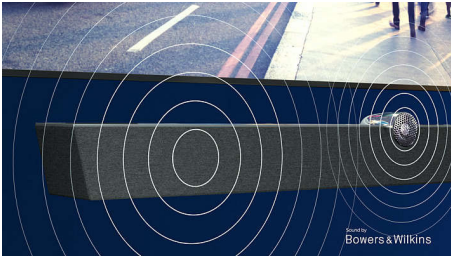
Content at your command.

- Voice control. The Google Assistant. Works with Alexa.
- Multi-room audio. DTS Play-Fi

PHILIPS

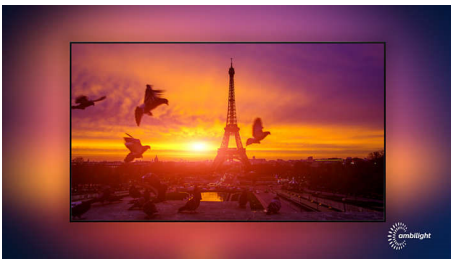
Highlights

Sound by Bowers & Wilkins.



A car chase. A whisper. The music. The exclusive Bowers & Wilkins sound enclosure brings a thrillingly lifelike performance to whatever you're watching. The iconic tweeter-on-top design keeps dialogue pristine. Up-firing speakers let you get the most out of immersive Dolby Atmos.

Ambilight 4 sided



With Philips 4 sided Ambilight, every moment feels closer. Intelligent LEDs around the edge of the TV respond to the on-screen action and emit an immersive glow that's simply captivating. Experience it once and wonder how you enjoyed TV without it.

P5 AI Dual engine



Twin processors with AI deliver a picture so realistic, it feels like you could step right into it. A deep-learning algorithm processes images in a manner similar to the human brain. No matter what you're watching, you get lifelike detail and contrast, rich colour and smooth motion.

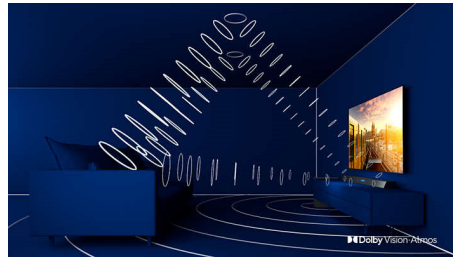
Philips OLED+ TV with HDR

OLED+

The difference is real.

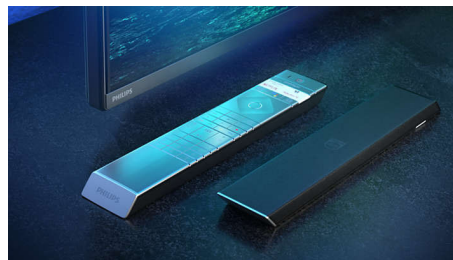
A Philips 4K UHD OLED+ TV is compatible with all major HDR formats. Whether it's a must-watch series or the latest game, every scene will be full of rich detail. If you're watching or playing in a brightly lit room, your TV automatically adjusts the picture so it still looks amazing.

Dolby Vision and Dolby Atmos.



Support for Dolby's premium sound and video formats means the HDR content you watch, and play, will look and sound glorious. You'll enjoy a picture that reflects the director's original intentions and experience spacious sound with real clarity and depth. Great for every film, show and game.

Premium materials.



Premium materials make all the difference to this OLED+ TV. The micro-mesh speaker grille is topped with Kvadrat's acoustically transparent wool-blend speaker fabric, which allows the sound to flow freely into the room. The backlit remote is finished with soft, responsibly sourced Muirhead leather.

Simply smart. Android TV



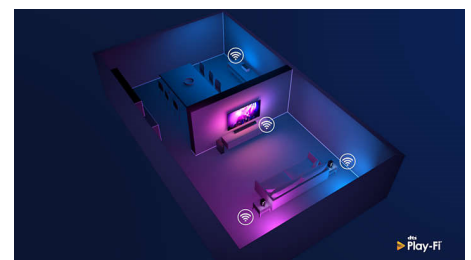
Your Philips Android TV gives you the content you want—when you want it. You can customise the home screen to display your favourite apps, making it simple to start streaming the movies and shows you love. Or pick up where you left off.

HDMI 2.1 VRR and low latency



Your Philips OLED+ TV lets you make the most of your next-gen gaming gear. When you switch on your console, your TV automatically enters a special gaming mode, which ensures fast, responsive gameplay and incredibly smooth graphics. Ambilight's gaming mode brings the thrill into the room.

DTS Play-Fi compatible



With DTS Play-Fi on your Philips TV you can connect to compatible speakers in any room. Got wireless speakers in the kitchen? Listen to the film while you make a snack or keep up with the sports commentary while you get everyone drinks.



Specifications

Ambilight

- Ambilight Features: Built-in Ambilight+hue, Ambilight Music, Game Mode, Wall colour adaptive, Lounge mode, AmbiSleep, Sunrise Alarm, AmbiWakeup
- Ambilight Version: 4 sided

Picture/Display

- Aspect ratio: 16:9
- Diagonal screen size (inch): 65 inch
- Diagonal screen size (metric): 164 cm
- Display: 4K Ultra HD OLED

- Panel resolution: 3840 x 2160
- Picture engine: P5 AI Dual Picture Engine
- Picture enhancement: Ultra Resolution, Wide Colour Gamut 99% DCI/P3, Dolby Vision, HDR10+, Perfect Natural Motion, A.I. PQ mode, CalMAN Ready, ISF Colour Management, Micro Dimming Perfect
- Diagonal screen size (inch): 65 inch

Supported Display Resolution

- Computer inputs on HDMI 1/2: HDMI 2.1 supported, up to 4K 120 Hz*, HDR supported,

HDR10+/HLG

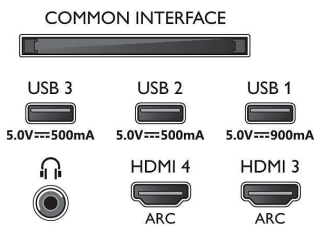
- Computer inputs on HDMI 3/4: HDMI 2.0 supported
- Video inputs on HDMI 1/2: HDMI 2.1 supported, up to 4K 120 Hz*, HDR supported, HDR10+/HLG
- Video inputs on HDMI 3/4: HDMI 2.0 supported

Tuner/Reception/Transmission

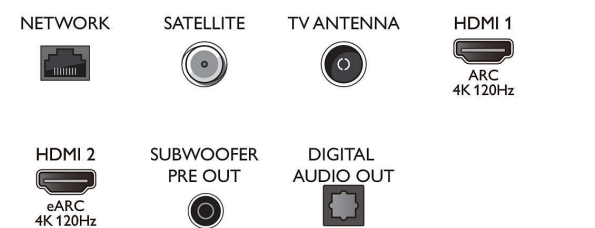
- Digital TV: DVB-T/T2/T2-HD/C/S/S2
- Video Playback: PAL, SECAM
- MPEG Support: MPEG2, MPEG4
- TV Programme guide*: 8-day Electronic

Connections

Side



Bottom



Specifications

- Programme Guide
- Signal strength indication
- Teletext: 1000 page Hypertext
- HEVC support

Android TV

- OS: Android TV™ 10 (Q)
- Pre-installed apps: Google Play Movies*, Google Play Music*, Google Search, YouTube, BBC iPlayer, Netflix, Amazon Prime Video, Amazon instant video, Disney+, Fitness App, Spotify
- Memory size (Flash): 16 GB*

Smart TV Features

- User Interaction: SimplyShare
- Interactive TV: HbbTV
- Programme: Pause TV, USB recording*
- Ease of Installation: Auto detect Philips devices, Device connection wizard, Network installation wizard, Settings assistant wizard
- Ease of Use: One-stop smart menu button, On-screen user manual
- Firmware upgradeable: Firmware auto upgrade wizard, Firmware upgradeable via USB, Online firmware upgrade
- Screen Format Adjustments: Basic - Fill Screen, Fit to screen, Advance - Shift, Zoom, stretch, Wide screen
- Remote Control: with Voice, with Key light, with Muirhead leather
- Voice assistant*: Google Assistant built in, RC with Mic., Works with Alexa

Multimedia Applications

- Video Playback Formats: Containers: AVI, MKV, H264/MPEG-4 AVC, MPEG-1, MPEG-2, MPEG-4, VP9, HEVC (H.265), AV1
- Music Playback Formats: AAC, MP3, WAV, WMA (v2 up to v9.2), WMA-PRO (v9 and v10)
- Subtitles Formats Support: .SRT, .SUB, .TXT, .SMI
- Picture Playback Formats: JPEG, BMP, GIF, PNG, 360 photo, HEIF

Processing

- Processing Power: Quad Core

Sound

- Audio: Sound by Bowers & Wilkins, 3.1.2 Channel, Output power: 70 Watt (RMS)
- Speaker configuration: 10 W x2, 5 W x1, woofer 20 W, height 12.5 W x2
- Codec: AC-4, Dolby Atmos®, DTS-HD(M6), Dolby Digital MS12 V2.5
- Sound Enhancement: A.I. Sound, Clear Dialogue, Dolby Atmos®, Dolby Bass Enhancement, Dolby Volume Leveller, Night mode, A.I. EQ

Connectivity

- Number of HDMI connections: 4
- HDMI features: 4K, Audio Return Channel
- EasyLink (HDMI-CEC): Remote control pass-through, System audio control, System standby, One touch play
- Number of USBs: 3

- Wireless connection: Wi-Fi 802.11ac, 2 x 2, Dual band, Bluetooth 5.0
- Other connections: Common Interface Plus (CI+), Digital audio out (optical), Ethernet-LAN RJ-45, Headphone out, Satellite Connector, Service connector
- HDCP 2.3: Yes on all HDMI
- HDMI ARC: Yes for all ports
- HDMI eARC: Yes on HDMI2
- HDMI VRR: FreeSync Premium, Yes on HDMI1 and HDMI2

EU Energy card

- EPREL registration numbers: 716197
- Diagonal screen size (inch): 65
- Diagonal screen size (metric): 164
- Energy class for SDR: G
- On mode power demand for SDR: 136 kWh/1000h
- Energy class for HDR: G
- On mode power demand for HDR: 117 kWh/1000h
- Off mode power consumption: n.a.
- Networked standby mode: $\leq 2.0\text{ W}$
- Panel technology used: OLED

Power

- Mains power: AC 220 - 240 V 50/60 Hz
- Ambient temperature: 5°C to 35°C
- Standby power consumption: $\leq 0.3\text{ W}$
- Power Saving Features: Auto switch-off timer, Light sensor, Picture mute (for radio), Eco mode

Accessories

- Included Accessories: Legal and safety brochure, Power cord, Quick start guide (x 1), Stand with sound solution, 2 x AAA Batteries, Remote Control

Design

- Colours of TV: Bezel chrome frame
- Stand design: Anodised grey sound solution

Dimensions

- Set Width: 1448.7 mm
- Set Height: 829.5 mm
- Set Depth: 47.3 mm
- Product weight: 23.5 kg
- Set width (with stand): 1448.7 mm
- Set height (with stand): 930.8 mm
- Set depth (with stand): 264.4 mm
- Product weight (+stand): 31.6 kg
- Box width: 1660.0 mm
- Box height: 1081.0 mm
- Box depth: 174.0 mm
- Weight incl. Packaging: 39.6 kg
- Stand width: 891.0 mm
- Stand height: 87.7 mm
- Stand depth: 260.7 mm
- Wall-mount compatible: 300 x 300 mm
- Set depth (wall-mounted): 152.2 mm
- Set height (wall-mounted): 995.2 mm
- Set width (wall-mounted): 1448.7 mm



- * 4K2K 120 Hz input format is internally scaled to 4K1K resolution
- * EPG and actual visibility (up to 8 days) is country- and operator-dependent.
- * Android App offerings vary per country. For more details please visit your local Google Play Store.
- * Philips TV Remote app and related functionalities vary per TV model, operator and country, as well as smart device model and OS. For more details please visit: www.philips.com/TVRemoteapp.
- * Smart TV app availability varies per TV model and country. For more details please visit: www.philips.com/smarttv.
- * USB recording for digital channels only, recordings may be limited by broadcast copy protection (CI+). Country and channel restrictions may apply.
- * This television contains lead only in certain parts or components where no technology alternatives exist in accordance with existing exemption clauses under the RoHS Directive.
- * Memory size (Flash): 16 G, the actual available disc space may differ (dependant on e.g. (pre-)installed apps, installed operating system, etc.)
- * Amazon, Alexa and all related logos are trademarks of Amazon.com, Inc. or its affiliates. Amazon Alexa is available in selected languages and countries.
- * Amazon Prime is available in selected languages and countries.
- * Disney+ subscription required. Subject to terms at <https://www.disneyplus.com> (c) 2020 Disney and its related entities. Disney+ is available in selected languages and countries.
- * The TV supports DVB reception for 'Free to air' broadcast. Specific DVB operators may not be supported. An up to date list can be found in the FAQ section of the Philips support website. For some operators Conditional Access and subscription are required. Contact your operator for more information.
- * Google Assistant is available on Philips Android TVs running on Android O (8) or higher OS version. Google Assistant is available in selected languages and countries.
- * Netflix subscription required. Subject to terms on <https://www.netflix.com>
- * Rakuten TV is available in selected languages and countries.



Issue date 2024-03-24

Version: 7.2.1

EAN: 87 18863 02943 5

© 2024 Koninklijke Philips N.V.
All Rights reserved.

Specifications are subject to change without notice.
Trademarks are the property of Koninklijke Philips N.V. or their respective owners.

www.philips.com