

Philips
Hospitality TV

43" Studio
DVB-T/C MPEG 2/4

43HFL2819D



Delight your guests

with pure taste

Show your guests how much you care with this affordable Hospitality TV. You will enjoy dedicated hospitality features like a branded welcome page, installation via USB and menu and control locking.

Advanced hotel features and future proof

- USB cloning of all settings for quick installation
- One combined channel list for Analog and Digital channels
- Advanced volume control to avoid guest disturbance
- Greet your guests with a customizable welcome page
- Prevent unauthorized use by joystick control locking
- Installation menu locking
- Off-line channel editor to edit a channel list on a PC

Great viewing experience and guest comfort

- USB for multimedia playback
- Low power consumption
- LED TV for images with incredible contrast

PHILIPS

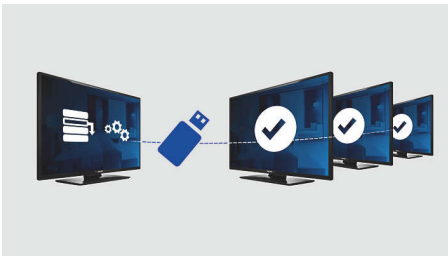
Highlights

Welcome page



A welcome page is displayed each time the TV set is switched on. The welcome page can be branded and customized easily at the time of installation via a simple welcome image in .png format.

USB Cloning



Provides the ability to easily copy all programming and channel programming settings from one TV into other TV sets in less than a minute. The feature ensures uniformity

between TV sets and significantly reduces installation time and costs.

USB (photos, music, video)



Share the fun. Connect your USB memory-stick, digital camera, mp3 player or other multimedia device to the USB port on your TV to enjoy photos, videos and music with the easy to use onscreen content browser.

Off-line channel editor

Off-line channel editor to edit a channel list on a PC

One combined channel list

One integrated channel list for digital and analogue channels. This allows the guest to zapp seamless between Analogue and Digital channels.

Advanced volume control

With advanced volume control you can install the start-up volume of the TV and predifine the volume range with which the TV set is allowed to operate, preventing excessive volume adjustments and avoiding disturbance of next door guests.

Joystick control locking

By disabling or enabling the joystick control locking, the administrator can prevent unauthorized use of the TV via the joystick, saving the hotelier overheads.

Installation menu locking

Prevents unauthorized access to installation and configuration settings, to ensure maximum guest convenience and avoid unnecessary reinstalling costs.

Low power consumption

Philips TVs are desgined to minimize power consumption. This will not only reduce environmental impact but also lower operating costs.

LED TV

With LED backlight you can enjoy low power consumption and beautiful images with high brightness, incredible contrast and vibrant colors

Specifications

Picture/Display

- Aspect ratio: 16:9
- Diagonal screen size (inch): 43 inch
- Diagonal screen size (metric): 108 cm
- Display: LED Full HD
- Panel resolution: 1920x1080p
- Brightness: 300 cd/m²
- Viewing angle: 178° (H) / 178° (V)

Tuner/Reception/Transmission

- Digital TV: DVB-C MPEG2/MPEG4, DVB-T MPEG2/MPEG4
- Analog TV: PAL, SECAM

Features

- Ease of use: Picture Style, Sound Style
- Digital services: Subtitles, Teletext, MHEG, Now&Next, 8d EPG

Hospitality Features

- Hotel mode: Joystick Control Lock, Menu lock, Installation Menu Lock, Volume limitation (incl. HP)
- Prison mode: high security mode, TXT/MHEG/USB/EPG/Subtitle Lock
- Timer: Sleep Timer, Wake Up Alarm
- Switch On control: Channel/Source, Picture Style, Volume (incl. HP)
- Anti-Theft: Kensington Lock
- Power control: Green/fast startup
- Your brand: Welcome Logo
- Cloning and Firmware update: via USB, Instant Initial Cloning
- Control: Block Automatic Channel Update
- Remote Control: Cable Strap Ready, RC Battery Door Lock
- Channels: Combined List, Off-Line Channel Editor

Healthcare features

- Control: Multi-Remote Control
- Convenience: Headphone out

Multimedia

- Video playback supported: Containers: AVI, MKV, Formats: H.264/MPEG4 AVC, MPEG1, MPEG2, MPEG4, HEVC, TS
- Music formats supported: MP3, AAC, WAV, WMA (v2 up to v9.2)
- Subtitle formats supported: SRT, SSA SUB, ASS,

SMI, TXT

- Picture formats supported: BMP, JPG, PNG
- Supp. Video Resolution on USB: up to 1920x1080p@30Hz
- Multimedia connections: USB

Audio

- Sound output Power: 16 (2x8) W
- Speakers: 2.0, Down Firing
- Sound Features: Equalizer, Balance, AVL, Incredible surround, Dynamic Bass

Power

- Mains power: AC 220-240V; 50-60Hz
- Ambient temperature: 5 °C to 45 °C
- Standby power consumption: <0.3 W
- Energy Label Class: A++
- Eu Energy Label power: 37 W
- Power Saving Features: Eco mode
- Annual energy consumption: 54 kW h

Accessories

- Included: Remote Control 22AV1407A/12, 2x AAA batteries, Tabletop Stand, Warranty Leaflet, Legal and Safety brochure
- Optional: Setup RC 22AV9573A

Connectivity Side

- Common Interface Slot: CI+ 1.3
- Headphone out: Mini-Jack
- USB1: USB 2.0
- AV input: CVBS+L/R (Cinch)

Connectivity Rear

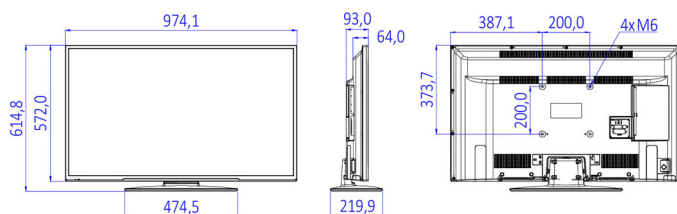
- Scart: CVBS, RGB, SVHS
- Antenna: IEC-75
- HDMI1: HDMI 1.4
- Digital Audio out: Coaxial (SPDIF)
- VGA input: 15 pin D-sub

Design

- Colour: Black

Dimensions

- Set Width: 974 mm
- Set Height: 572 mm
- Set Depth: 64/93 mm
- Product weight: 8.4 kg
- Set width (with stand): 974 mm



Issue date 2023-07-15

Version: 1.0.1

EAN: 87 18863 01092 1

© 2023 Koninklijke Philips N.V.
All Rights reserved.

Specifications are subject to change without notice.
Trademarks are the property of Koninklijke Philips N.V.
or their respective owners.

www.philips.com

- Set height (with stand): 615 mm
- Set depth (with stand): 220 mm
- Product weight (+stand): 9.3 kg
- Wall mount compatible: M6, 200 x 200 mm

* Availability of features will depend on implementation chosen by integrator.

* Typical on-mode power consumption measured according to IEC62087 Ed 2. The actual energy consumption will depend on how the television is used.

* This television contains lead only in certain parts or components where no technology alternatives exist in accordance with existing exemption clauses under the RoHS Directive.